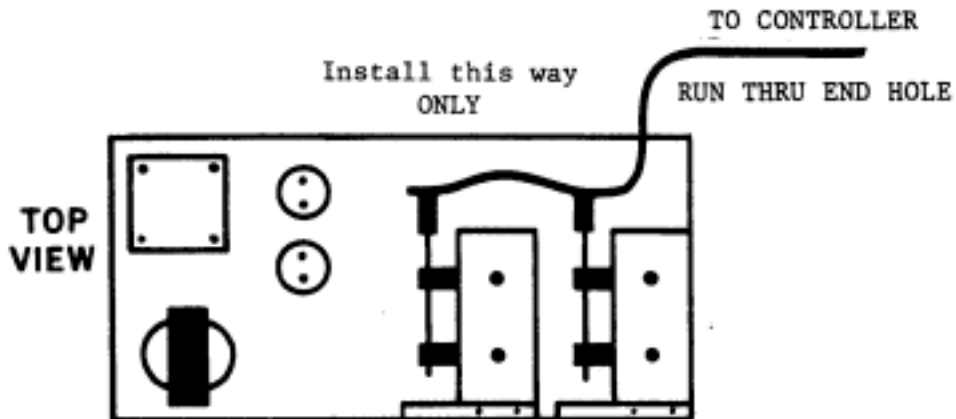
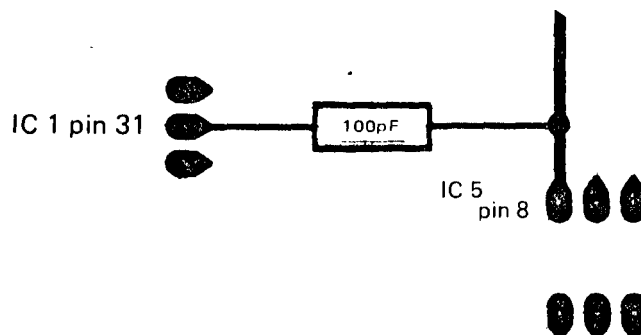


MF-68 Disk Instructions Addendum

When connecting the ribbon cables to the drives the instructions state to connect the cables with pin 1 of the connectors toward the top of the disk unit. Some cables may have the two card edge connectors installed upside down or may have no numbers at all. If your cable has black connectors with a white painted dot on one end, the end with the dot is the pin 1 end. All cables should be installed as in the following pictorial. By running the cable through the end hole in the rear of the chassis the only natural way for the connectors to fit will be the right way, as shown. Be very careful to install the cable correctly - incorrect installation can cause damage to the controller and the drives.



When using a DC-1 controller board a 100 pf capacitor should be added between the WRITE DATA line on the disk controller IC (IC 1) and ground. This capacitor should be added on the BOTTOM side of the board from IC 1 pin 31 to the heavy trace that goes to IC 5 pin 8.



When using the disk boot in the SWTBUG® monitor ROM if you are having a problem booting, when installing the disk type D before closing the door on the disk drive. This will give the disk's motor speed time to stabilize before the boot tries to load the operating system. After the speed has stabilized (about 1 sec.) close the door.