



EPROM PROGRAMMING ALGORITHM A

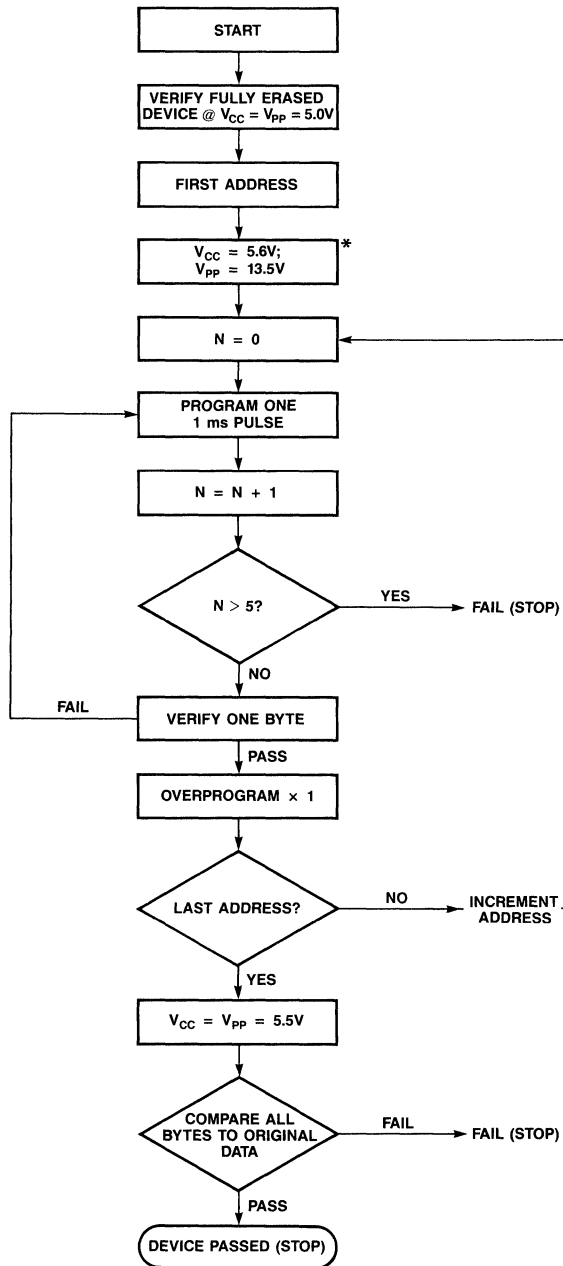
WAFERSCALE INTEGRATION, INC.

PRODUCTS:

WS57C64F
WS27C64F
WS57C128F
WS27C128F
WS57C256F
WS27C256F
WS57C65
WS57C257

PROGRAMMING PARAMETERS

V_{pp} : $13.5V \pm 0.5V^*$
PULSE: MIN $t_{pw} = 0.95$ ms



* $V_{pp} = 12.5V \pm 0.5V$ FOR:

WS27C256F
WS57C256F
WS57C257
WS27C512F



EPROM PROGRAMMING ALGORITHM B

WAFERSCALE INTEGRATION, INC.

