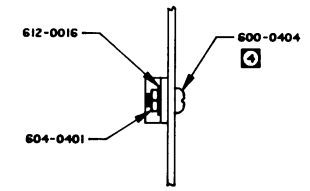
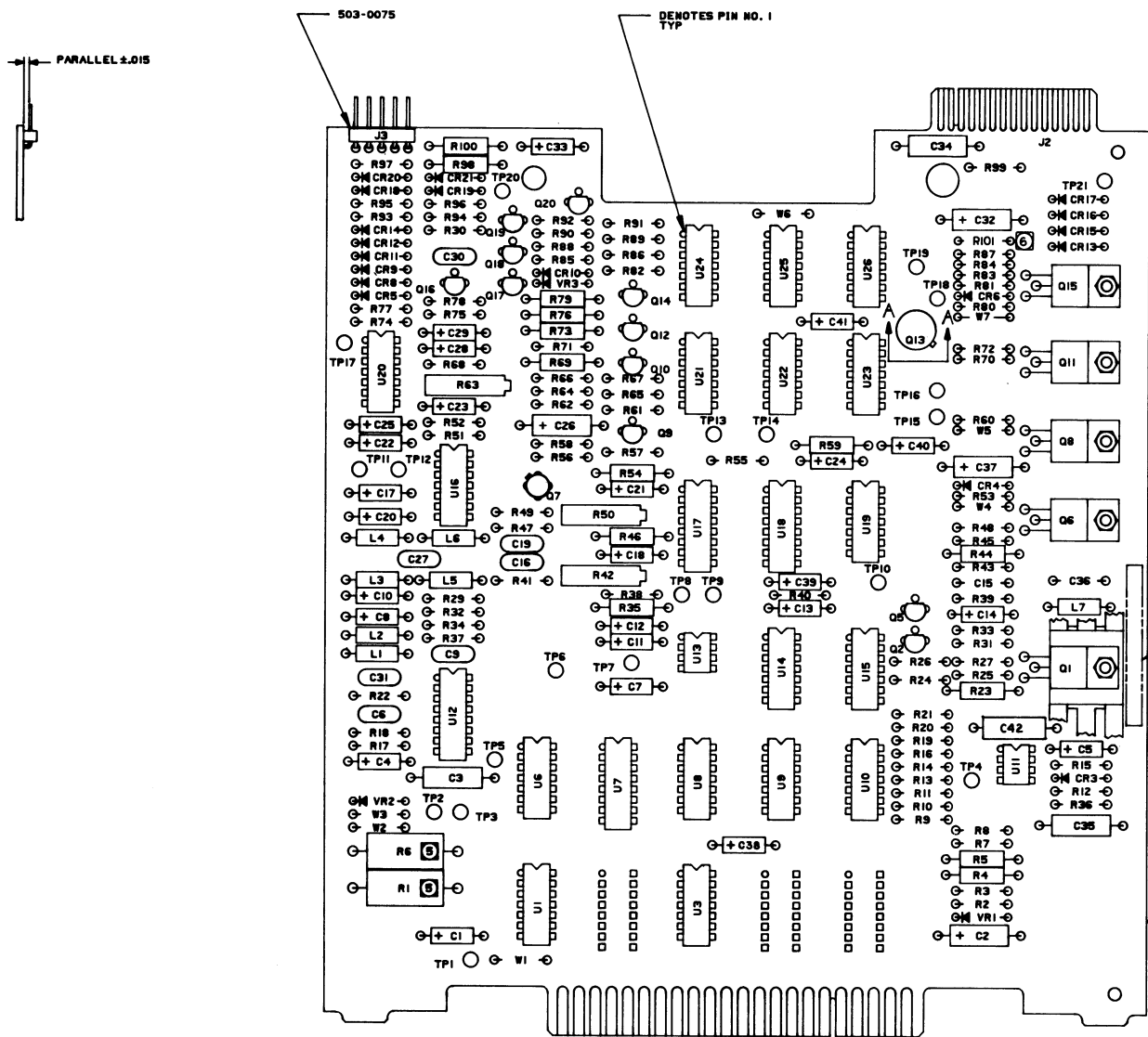
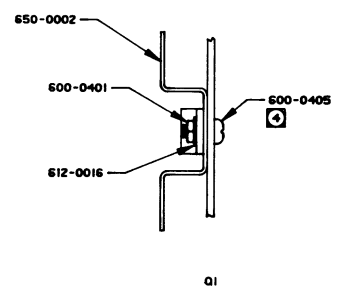


8 7 6 5 4 3 2

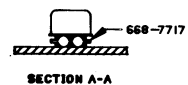
REVISIONS					
REV	DESCRIPTION	DATE	DR	CHK	APPR
A	ERN 8-UH PRE-PROD REL: B, ECH 10284 & ERN 10-AH PROD REL: C, ECH 10287: D, ECH 11229				
E	ECN 11492	1/2/77	JMC	WJL	J.D.
F	ECN 11484	2/2/77	JMC	WJL	J.D.
F	ECN 11553 REVISED AND REDRAWN	3/2/77	JMC	WJL	J.D.
G	ECN 11894	1/1/78	JMC	WJL	J.D.
H	ECN 12220	7/1/78	JMC	WJL	J.D.
J	ECN 13231	2/2/79	MD	WJL	J.D.
K	ECN 13437	1/2/79	MP	WJL	J.D.



Q6, Q8, Q11, & Q15



Q1



SCHEMATIC: 600280
REF DWG:

PART NO. 600281- REV

- ⑥ INCREASED LEAD SPACING OF R101 WILL REQUIRE LEADS TO BE BENT CLOSE TO COMPONENT BODY.
- ⑤ MAINTAIN AIR GAP OF .06±.03 BETWEEN COMPONENT BODY AND BOARD. TORQUE TO 11 INCH LBS.
- ④ MARK PART NO. 600281, VERSION NUMBER AND VERSION ISSUE LETTER IN AREA SHOWN.
- ③ THIS ASSEMBLY SHALL BE MADE FROM PROCESS BOARD 600282-01 REV G AND SUBSEQUENT.
- 1. ASSEMBLE PER STANDARD MANUFACTURING METHODS.

NOTES: UNLESS OTHERWISE SPECIFIED

<small>The information herein is the property of PERTEC CORPORATION. Its use for any other than that for which it was prepared, without the express or implied consent of PERTEC CORPORATION, is prohibited.</small>		SIGNATURES DR. CADDS CHK. <i>[Signature]</i>		DATE 1/2/77 1/2/77	PERTEC <small>a division of Permat Computer Corporation</small>
DIMENSIONS ARE IN INCHES TOLERANCES: DEC = .001 ANGULAR ± 1/2° FINISH: ALL SHARP CORNERS APPROX .010		TITLE PCBA, FD CONTROL D		SIZE CODE IDENT NO. DATE E 32097 600281 K	
NEXT ASSY: 1-111508-01 APPLICATION:		MATL: SEE L/M		SCALE: 2:1 DO NOT SCALE DIMS	

8 7 6 5 4 3 2 1 CADOS