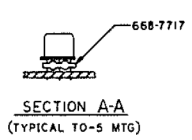
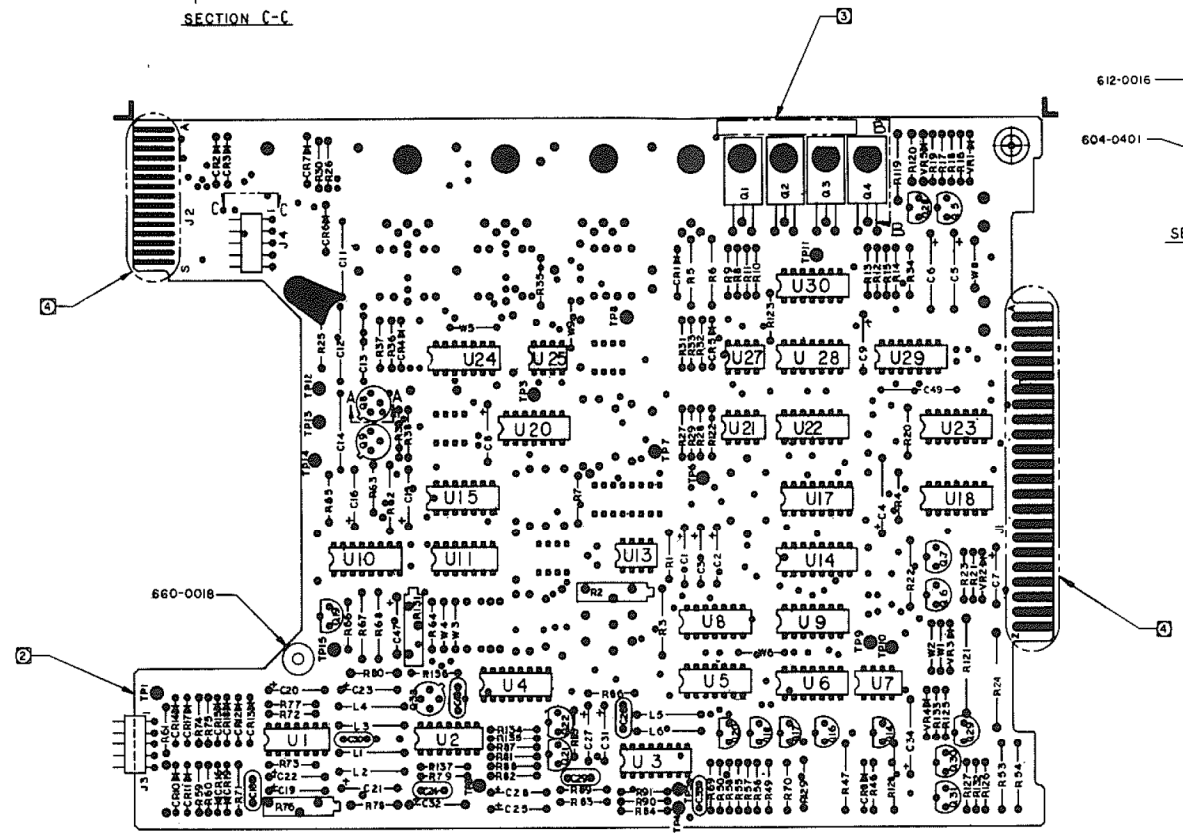
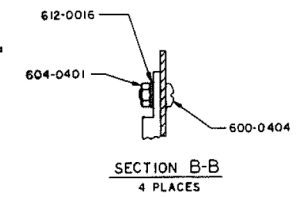
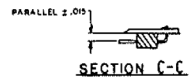


REVISIONS					
REV	DESCRIPTION	DATE	DR	CHK	APP
A	FRN 200-FA PRE-PROD REL	7/24/66	SCJ	WJ	WJ
B	ECN 30387A	7/27/66	WJ	WJ	WJ
D	ECN 30400	8/2/66	WJ	WJ	WJ
E	FRN 200-OP PROD REL	8/16/66	WJ	WJ	WJ
C	ECN 30407	8/24/66	RJ	WJ	WJ



- ① MASK AREAS SHOWN DURING FLOW SOLDER OPERATION.
  - ② THIS ASSEMBLY SHALL BE MADE FROM PROCESS BOARD 600252-01 REV D AND SUBSEQUENT.
  - ③ MARK PART NUMBER 600251 VERSION NUMBER AND VERSION ISSUE LETTER IN AREA SHOWN.
  - ④
1. ASSEMBLE PER STANDARD MANUFACTURING METHODS.  
NOTES: UNLESS OTHERWISE SPECIFIED.

SCHEMATIC SPECIFICATION REF DWGS: 600250  
PART NO. 600251- REV

SIGNATURES		DATE	PERTEC PERIPHERAL EQUIPMENT
DR	WJ	7/24/66	
CHK	WJ	7/24/66	
APP	WJ	7/24/66	
TITLE PCBA, FD, BASIC II, AC			
SEE LM			
REV E 600251			