

## PERIPHERAL EQUIPMENT DIVISION

TITLE DRAWING ERRORS ON ONE/SHOT SCHEMATIC/PCBA LAYOUT				PIB NO. DK-3020	
PRODUCT 1001	TAPE DISK FORMATTER	11 XX 11	EQUIPMENT CHANGED 103721/103720 REV. C	MODEL SERIES AFFECTED D3000	EFFECTIVE DATE 1-15-75

CLASS OF BULLETIN:	ORDER PART KIT NO.	EFFECTIVITY
<input type="checkbox"/> IMPROVEMENT <input type="checkbox"/> RETROFIT ON FAILURE <input type="checkbox"/> RETROFIT RECOMMENDED <input checked="" type="checkbox"/> SERVICE INFORMATION ONLY	N/A	ALL REVISION C 103720 SCHEMATICS 103721 PCBA LAYOUT

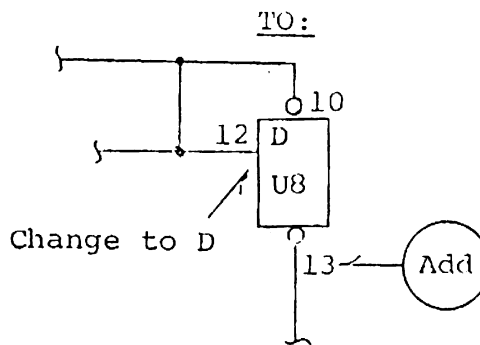
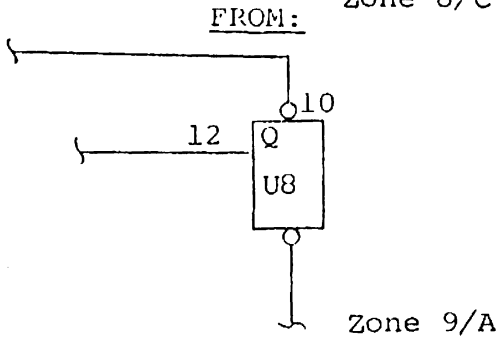
**SUBJECT:** D3000 DIABLO COMPATIBLE - DRAWING ERRORS ON ONE/SHOT SCHEMATIC 103720 REV. C and PCBA LAYOUT 103721 REV. C.

\*\*\*\*\*NOTE\*\*\*\*\*

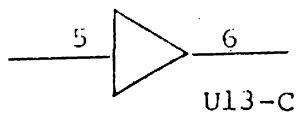
DOCUMENT CHANGE ONLY!!!!  
 NO PHYSICAL CHANGES TO  
 EQUIPMENT REQUIRED.

**PURPOSE:** This Product Improvement Bulletin provides the necessary information to update the latest one/shot documentation. Make schematic and PCBA layout corrections in your manuals in the following manner.

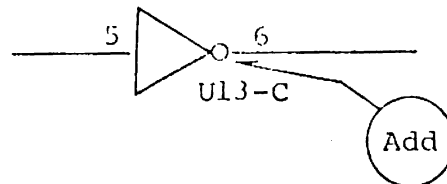
SCHEMATIC (103720)  
 Zone 8/C



FROM:



TO:



Additional Information Be Required - Contact

Distribution Code - 6318

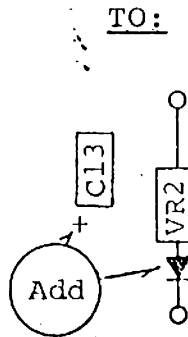
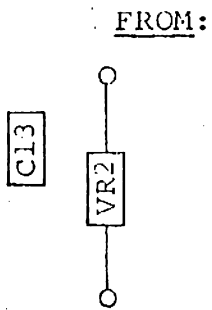
PERTEC

PERIPHERAL EQUIPMENT DIVISION  
 9600 Irondale Avenue, Chatsworth, California 91311  
 Phone (213) 882-0030 / TWX (910) 494-2093  
 ATTENTION: PRODUCT SUPPORT MANAGER  
 PERTEC 20 KM12C(11)

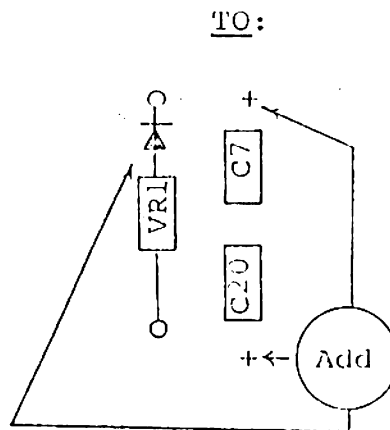
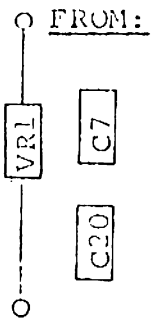
TITLE DRAWING ERRORS ON ONE/SHOT SCHEMATIC/PCBA LAYOUT

PIB NO.  
DK-3020

PCBA LAYOUT (103721)  
Zone 7/E



Add polarity signs  
and diodes as shown



Add polarity signs  
and diodes as shown

Change revision level of schematic and PCBA layout to C1.

Should any additional information or assistance be required,  
contact Product Support at your convenience.