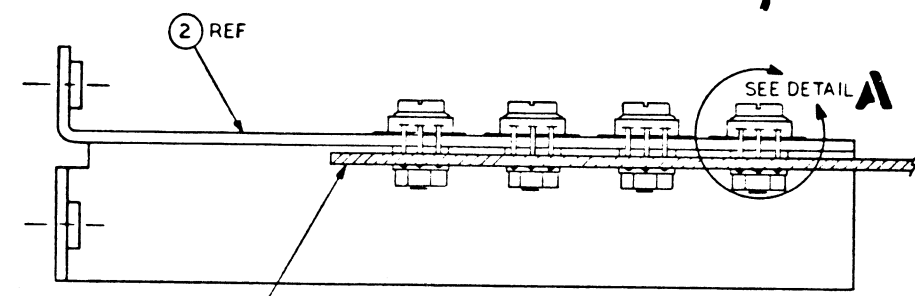
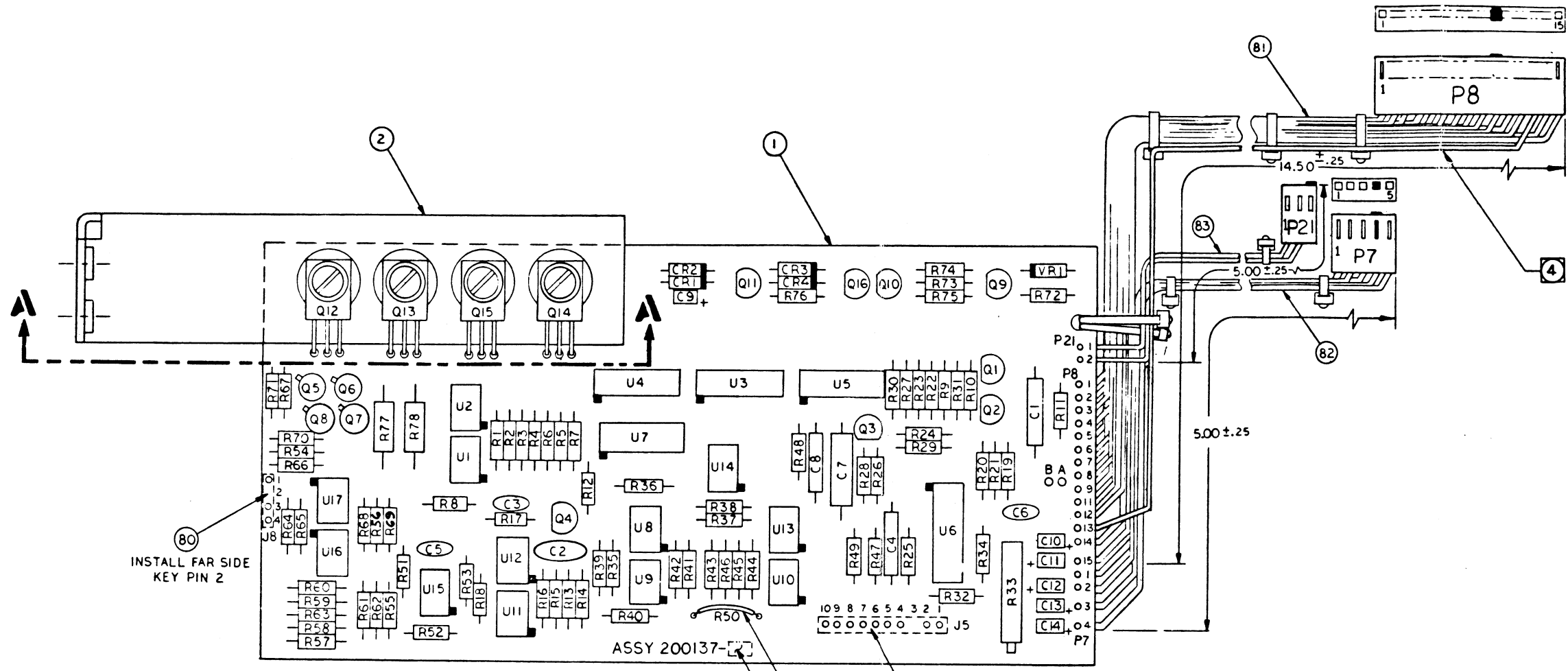
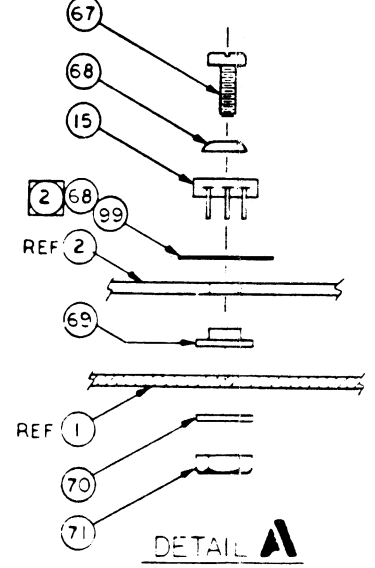


REVISIONS		200137	H
REV	DESCRIPTIONS		
A	ENGINE REL		
B1	ADDED JUMPER POINT A & B DAG THORPEY PIN 3 OF ITEM 79		
C	ECO 93		
D	SEE ECO 229		
E	ECO 241		
F	ECO 275		
G	SEE ECO 324		
H	ECO 332		

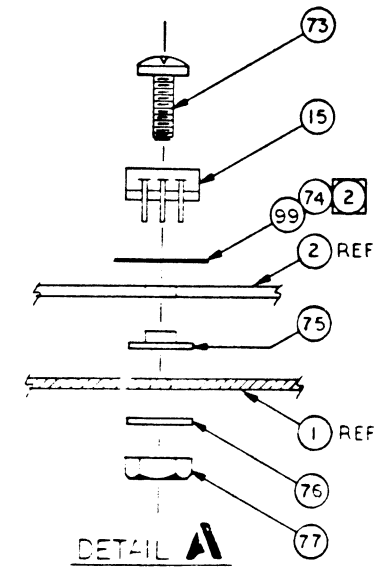


VIEW A

94  
95 JUMPER  
79 INSTALL FAR SIDE KEY PIN 3



DETAIL A  
ITEMS TO BE USED WITH MJE TYPE TRANSISTORS



DETAIL B  
ITEMS TO BE USED WITH TIP 32 & RCA 32 TYPE TRANSISTORS

- 4 WIRE TO P8-13 TO BE LEFT OUT OF BUNDLE.
- 3 SCHEMATIC REF 200136.
- 2 APPLY SILICON GREASE ON BOTH SIDES OF MICA INSULATOR.
- 1 MARK REF DESIGNATIONS OR REVISION LEVEL .2 HIGH BLACK/WHITE CHARACTERS IN APPROX AREA SHOWN. UNLESS OTHERWISE SPECIFIED;

<b>PERSCI, INC.</b>	
<b>PERSCI</b>	
NEXT ASSY 200 31	APPROVED BY DRAWN BY REVISED
ASSEMBLY, JOB. POSITIONER SERVO	
MODEL 270, 277	DRAWING NUMBER 200137 H

200137 H

ML