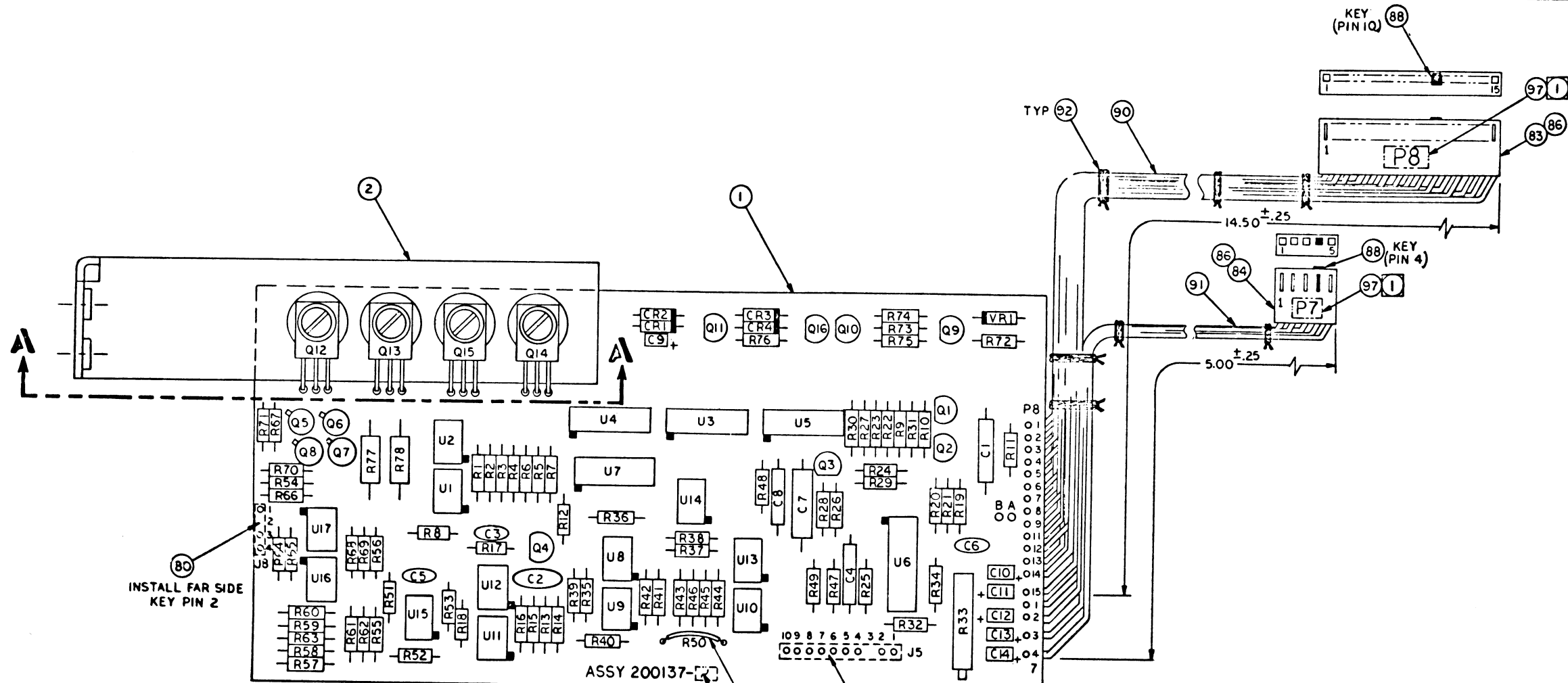
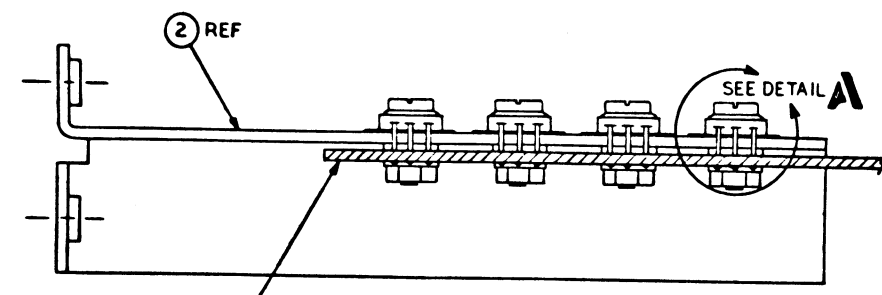


REV		REVISIONS	200137	B1
A		ENGIN REL		
B1		ADDED JUMPER POINT A & B DWG CHG; KEY PIN 3 OF ITEM 79		

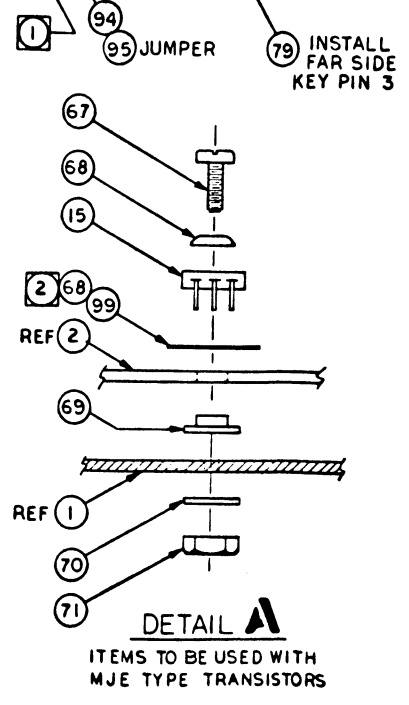


INSTALL FAR SIDE
KEY PIN 2

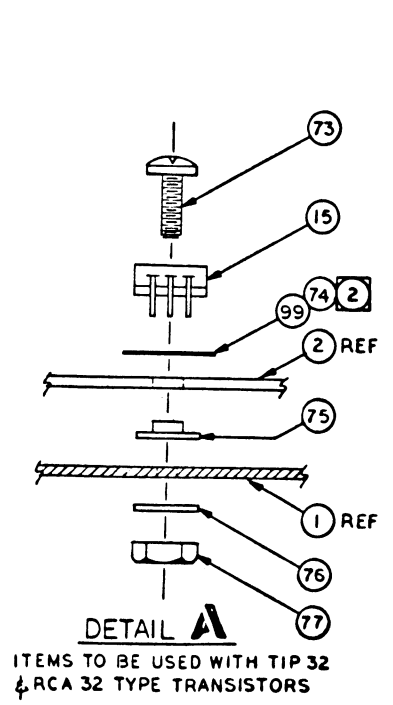
ASSY 200137



VIEW A



DETAIL A
ITEMS TO BE USED WITH
MJE TYPE TRANSISTORS



DETAIL B
ITEMS TO BE USED WITH TIP 32
& RCA 32 TYPE TRANSISTORS

- 3. SCHEMATIC REF 200136.
- 2 APPLY SILICON GREASE ON BOTH SIDES OF MICA INSULATOR.
- 1 MARK REF DESIGNATIONS OR REVISION LEVEL .12 HIGH BLACK/WHITE CHARACTERS IN APPROX AREA SHOWN. UNLESS OTHERWISE SPECIFIED;

PERSCI, INC.	
PERSCI	
SCALE:	APPROVED BY:
DATE:	DESIGNED BY:
ASSEMBLY, PCB, POSITIONER SERVO	
MODEL 272	SCALE 2:1
	SHT 1 OF 5
	200137 B1