

THE MATERIAL HEREIN IS FOR INFORMATION PURPOSES ONLY AND IS SUBJECT TO CHANGE WITHOUT NOTICE. DIGITAL EQUIPMENT CORPORATION ASSUMES NO RESPONSIBILITY FOR ANY ERRORS WHICH MAY APPEAR HEREIN.

FIELD MAINTENANCE PRINT SET

THIS DRAWING AND SPECIFICATIONS HEREIN ARE THE PROPERTY OF DIGITAL EQUIPMENT CORPORATION AND SHALL NOT BE REPRODUCED OR COPIED IN WHOLE OR IN PART AS THE BASIS FOR THE MANUFACTURE OR SALE OF ITEMS WITHOUT WRITTEN PERMISSION. COPYRIGHT © 1980 DIGITAL EQUIPMENT CORPORATION.

1980

TABLE OF CONTENTS

TU58-E Field Maintenance Print Set

B-TC-TU58-E-1	
E-UA-TU58-E-0	POWERED DUAL DRIVE ASSY
D-AD-7017567-0-0	TAPE DRIVE ASSEMBLY
K-PL-7017567-0-DBP	TAPE DRIVE ASSEMBLY
D-AD-7015510-0-0	CARTRIDGE DRIVE
E-UA-5413489-0-0	SERIAL TU58
D-CS-5413489-0-1	SERIAL TU58 SCHEMATIC
K-PL-5413489-0-DBP	SERIAL TU58
B-IA-7017568-0-0	CABLE, I/O
B-PL-7016753-0-0	INSTALLATION ASSY
D-AD-7017372-0-0	POWER SUPPLY ASSY
B-PL-7017372-0-0	POWER SUPPLY ASSY
A-SP-3700490-0-0	SHIPPING CONTAINER
B-IA-7017505-0-0	CABLE, I/O
D-IA-7016505-0-0	CABLE, POWER
D-IA-7016527-0-0	CABLE, POWER
B-DD-TU58-E	POWERED DUAL DRIVE ASSY
B-PL-TU58-E-2	TU58-E SHIP LIST

UNIT VARIATIONS COVERED BY THIS PRINT SET

TU58-EX
TU58-EA

TU58-E
Field Maintenance
Print Set

Digital Equipment
Corporation

Print Set Part Number MP-01014-00

PRELIMINARY

REV. NUMBER
A
TU58-E-1
B TC

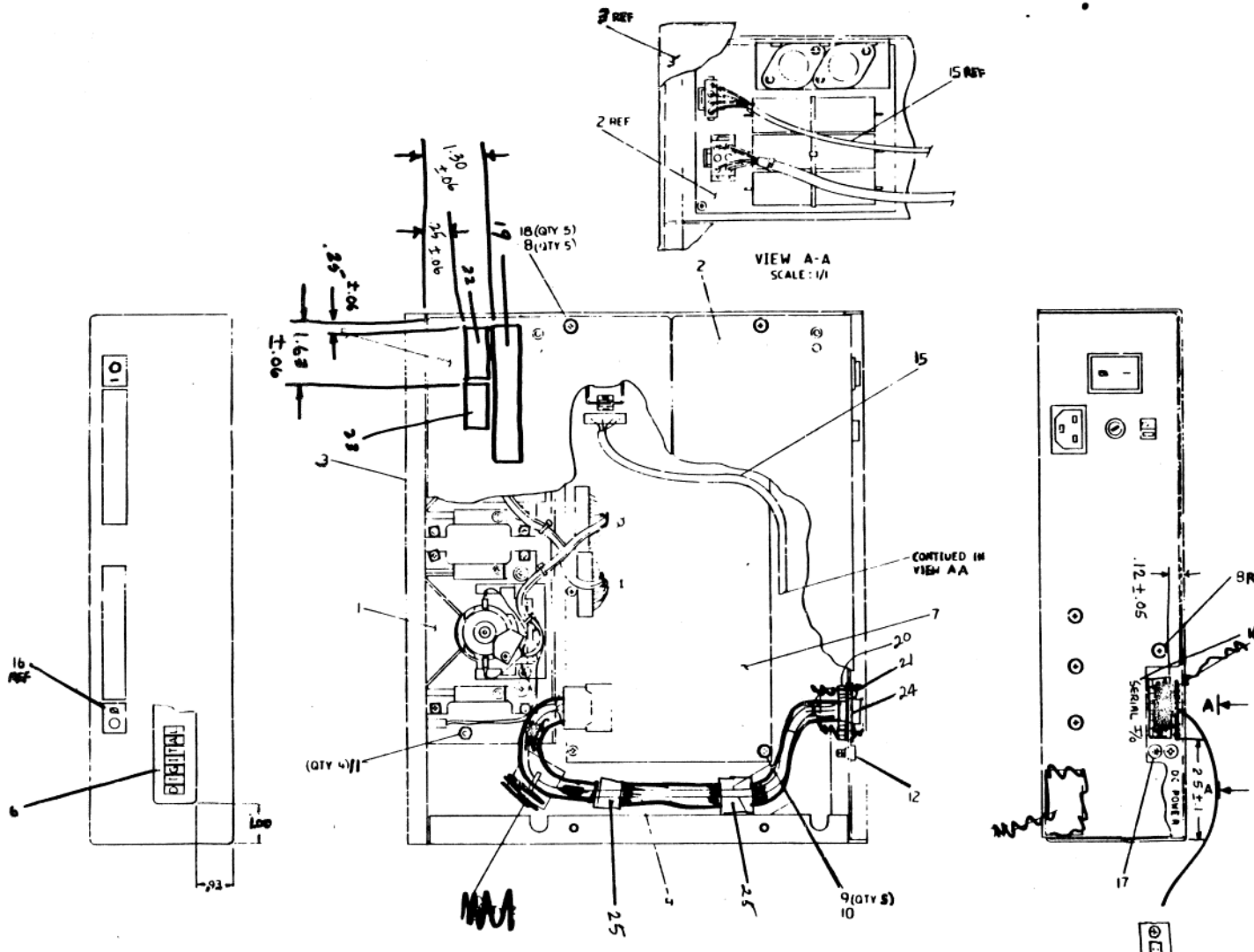
REVISION HISTORY	REV		DRY <i>John</i>	DATE	21 APR 80	TITLE		digital	
	ECO NUMBER		CHKD <i>W.C.</i>	DATE	26 MAR 80	TU58-E FIELD MAINTENANCE PRINT SET			
	DATE		DES. EN. <i>W.C.</i>	DATE	26 MAR 80	DOCUMENT NUMBER			
			RESP. ENG. <i>W.C.</i>	DATE	20 MAR 80	SIZE	CODE	NUMBER	REV
			FIELD SERVICE <i>J. Stea</i>	DATE	15 MAR 80	B	TC	TU58-E-1	1
			NEXT HIGH RE						SHEET 1 OF 1

DRB 124A

PRELIMINARY

MARKED PRINTS
FOR TU58-E

UNLESS OTHERWISE SPECIFIED, DIMENSIONS ARE IN INCHES
 DIMENSIONS IN PARENTHESES ARE FOR REFERENCE ONLY
 DIMENSIONS IN BRACKETED ARE FOR REFERENCE ONLY
 DIMENSIONS IN ITALIC ARE FOR REFERENCE ONLY



QTY	DESCRIPTION	UNIT	QTY
2	CLAMP CABLE	900656-0-0	2
2	BRICK CONNECTOR	90-0656-0-0	2
1	LABEL, CIA	741227-00	23
1	LABEL, III	741617-02	22
2	PAN HEAD SCREW	90-0607-01	21
2	NUT, REF # 6-32	900657-00	20
1	LABEL, SERIAL NO	3613	19
5	LOCK WASHER, BUT TOOTH	90-0656-04	18
1	DECAL, G.N.D.	361280-01	17
1	DECAL, STICKER	361745L-00	16
1	CABLE TUBE SUPPLY OUTPUT 1A	716527-10	15
2	CABLE TIES	900656-00	14
1	SCR, PAN HD 10-32x.38	900607-01	12
1	NUT, REF # 6-32	900656-00	11
1	WASHER, NYLON	9006707	10
2	SCR, PAN HD 4-40x.25	9006101-01	9
5	SCR, PH. TRUSS 6-32x.58	9006101-01	8
1	SERIAL TUSH	9006101-01	7
1	DECAL	3616376-02	6
1	PLATE, BOTTOM	07A742105800	5
1	CABLE, T/O	07A701A305-1F	4
1	INTEGRATION ENCLOSURE	07A70173480-1	3
1	POWER SUPPLY ASSY.	D407017372-02	2
1	ASSEMBLY TAPE DRIVE	D407017562-00	1

3613209-00

9006037-03

PRELIMINARY

QUANTITY & VARIATION	DESCRIPTION	UNIT	QTY
1	POWERED DUAL DRIVE ASSY	USB	1
1	POWERED DUAL DRIVE ASSY	USB-E-0	1

UNLESS OTHERWISE SPECIFIED, DIMENSIONS ARE IN INCHES

SCALE: 1/1

DATE: 1/1/00

BY: [Signature]

CHKD: [Signature]

APP'D: [Signature]

DO NOT SCALE DIMS

MATERIALS: SEE PARTS LIST

FINISH: NONE

REVISIONS:

REV	DATE	DESCRIPTION
1	1/1/00	ISSUE FOR FAB

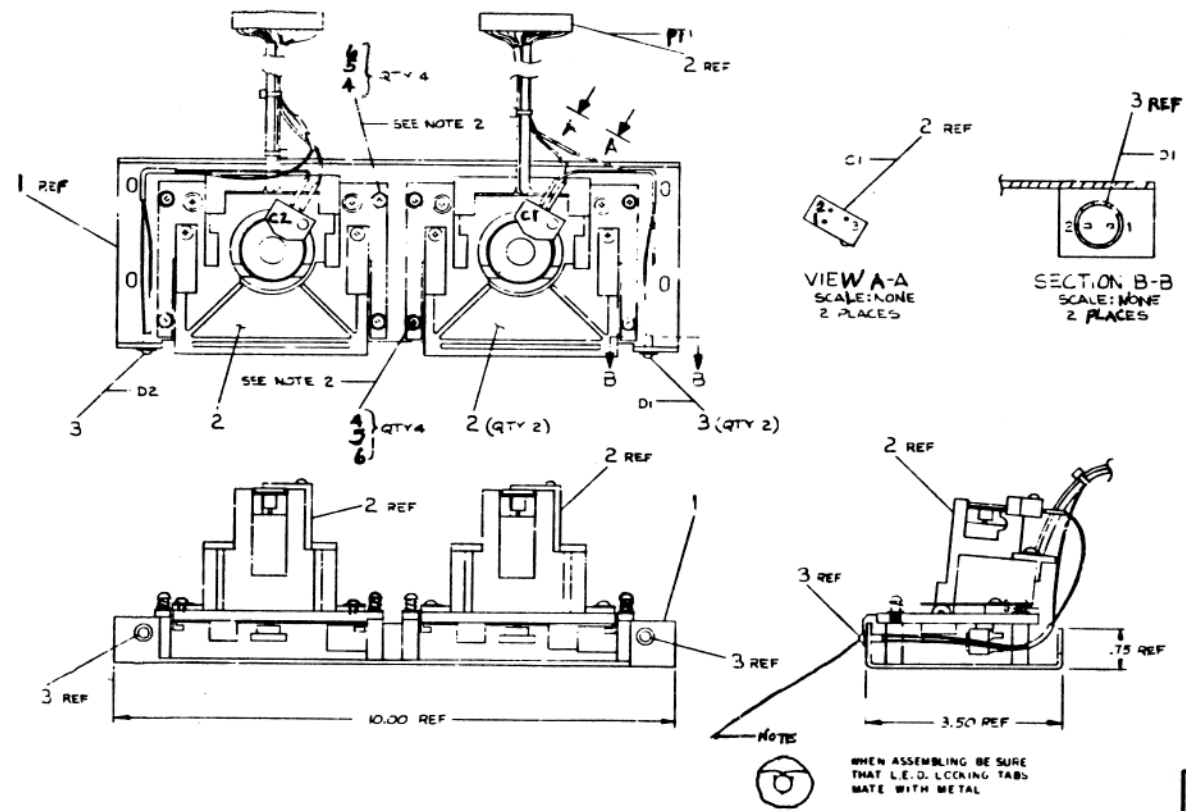
SHEET 1 OF 1

THIS DRAWING AND SPECIFICATIONS HEREBY ARE THE PROPERTY OF BUSHNELL TELEPHONIC COMPANY AND SHALL BE KEPT IN CONFIDENCE BY YOU. YOU SHALL NOT REPRODUCE OR IN ANY MANNER DISCLOSE THE CONTENTS OF THIS DRAWING TO ANY OTHER PERSON. YOU SHALL NOT REPRODUCE OR IN ANY MANNER DISCLOSE THE CONTENTS OF THIS DRAWING TO ANY OTHER PERSON.

0-0-195102 DWG 2

WIRE TABLE				
ITEM NO	DESCRIPTION	FROM	TO	REMARKS
3	26 BRN	D1-1	C1-2	SEE NOTE 1
		D1-2	P11-B BK WIRE	
3		D2-1	C2-2	SEE NOTE 1
		D2-2	P12-B BK WIRE	

- NOTES:
1. DISCONNECT EXISTING BRN WIRE FROM C1-2 & C2-2
 2. TORQUE VALUES ON DRIVES TO BE 5W/LBS. ON ITEM #6



CAUTION: OFF SHEET PARTS LIST EXISTS K-PL-7017567-0-00

INITIALS

DESCRIPTION	ENG PART NO	ITEM NO
UNLESS OTHERWISE SPECIFIED DIMENSIONS ARE IN INCHES		
QUANTITY & VARIATION	PREPARED	CHECKED
DATE	BY	BY
APPROVED	DATE	BY
REVISED	DATE	BY
DO NOT SCALE DIMS	NEXT LAYER ASSY	
SEE PARTS LIST	SEE PARTS LIST	
FINISH: NONE	FINISH: NONE	
DESCRIPTION	ENG PART NO	ITEM NO
UNLESS OTHERWISE SPECIFIED DIMENSIONS ARE IN INCHES		
QUANTITY & VARIATION	PREPARED	CHECKED
DATE	BY	BY
APPROVED	DATE	BY
REVISED	DATE	BY
DO NOT SCALE DIMS	NEXT LAYER ASSY	
SEE PARTS LIST	SEE PARTS LIST	
FINISH: NONE	FINISH: NONE	
DESCRIPTION	ENG PART NO	ITEM NO
UNLESS OTHERWISE SPECIFIED DIMENSIONS ARE IN INCHES		
QUANTITY & VARIATION	PREPARED	CHECKED
DATE	BY	BY
APPROVED	DATE	BY
REVISED	DATE	BY
DO NOT SCALE DIMS	NEXT LAYER ASSY	
SEE PARTS LIST	SEE PARTS LIST	
FINISH: NONE	FINISH: NONE	
DESCRIPTION	ENG PART NO	ITEM NO
UNLESS OTHERWISE SPECIFIED DIMENSIONS ARE IN INCHES		
QUANTITY & VARIATION	PREPARED	CHECKED
DATE	BY	BY
APPROVED	DATE	BY
REVISED	DATE	BY
DO NOT SCALE DIMS	NEXT LAYER ASSY	
SEE PARTS LIST	SEE PARTS LIST	
FINISH: NONE	FINISH: NONE	
DESCRIPTION	ENG PART NO	ITEM NO
UNLESS OTHERWISE SPECIFIED DIMENSIONS ARE IN INCHES		
QUANTITY & VARIATION	PREPARED	CHECKED
DATE	BY	BY
APPROVED	DATE	BY
REVISED	DATE	BY
DO NOT SCALE DIMS	NEXT LAYER ASSY	
SEE PARTS LIST	SEE PARTS LIST	
FINISH: NONE	FINISH: NONE	

AUTOMATED BY PRTLST.3H(42)

PARTS LIST

SHEET 41 OF 41

LINE	ITEM	DOCUMENT NUMBER	PART NUMBER	DESCRIPTION	QTY PER VARIATION	REFERENCE DESIGNATOR
1	1	D-1A-7423305-0-0	7423305-00	PLATE, TAPE DRIVE	1	
2	2	D-AD-7015510-0-0	7015510-00	CARTRIDGE DRIVE	2	C1, C2
3	3	B-1A-7017543-0-0	7017543-00	L.E.B. ASST.	2	D1, D2
4	4		7424101-00	WASHER	8	
5	5		1217653-00	SPRING, COMPRESSION .234 OD X .3	8	
6	6		7424084-00	SCREW, SHOULDER	8	

REVISION HISTORY		BASIC PART NO: 7017567		DRN: JAMES SICARD		DATE: 29-NOV-79		D I I B I T A I L	
ENG	ECD NUMBER	REV	SECTION A OF A	CHG'D:	GARY FLANDERS	DATE:	13-DEC-79	TITLE	PARTS LIST
	INITIAL	1A	SECTION VARIATION INDEX	DES. ENG.:	J. WALL	DATE:	21-JAN-80	TAPE DRIVE ASSEMBLY	
			EA) 00	RESP. ENG.:	J. WALL	DATE:	07-JAN-80	DOCUMENT NUMBER	
			EB)	INFG. ENG.:	JOHN LABATE	DATE:	24-MAR-80	SIZE: CODE: NUMBER	1 25H
			EC)	ASSEMBLY NUMBER:	D-AD-7017567-0-0	TOP DOCUMENT NUMBER:	IE-UA-1050-VB-0	K PL	7017567-0-DPP A
			ED)	FILE NAME:	214734 PLS	EDIT	2		
			EE)	* THIS DRAWING AND SPECIFICATIONS HEREIN ARE THE PROPERTY OF DIGITAL EQUIPMENT CORPORATION AND SHALL NOT BE REPRODUCED OR COPIED OR USED IN WHOLE OR IN PART AS THE BASIS FOR THE MANUFACTURE OR SALE OF ITEMS WITHOUT WRITTEN PERMISSION. COPYRIGHT (C) 1980. DIGITAL EQUIPMENT CORPORATION *					
			EF)						
			EH)						
			EJ)						
			EK)						
			EL)						
			EM)						

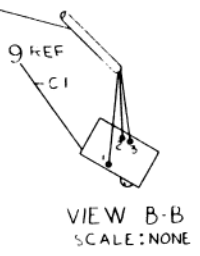
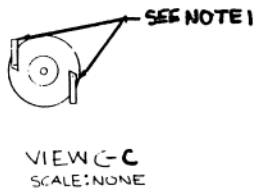
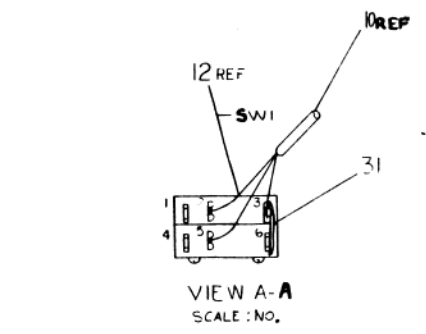
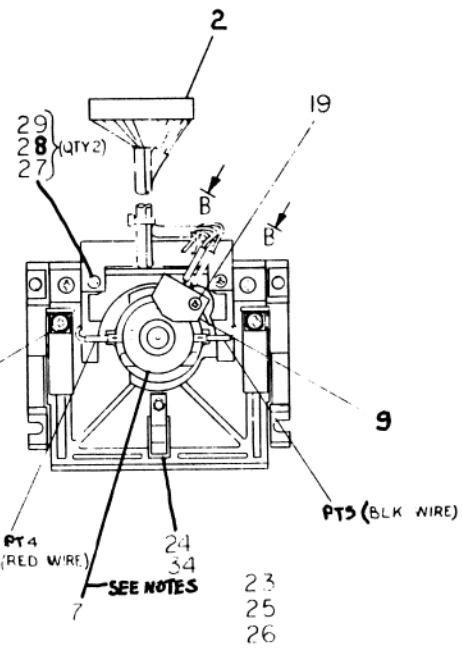
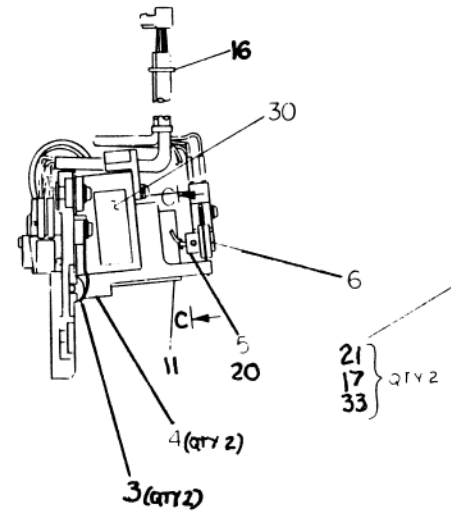
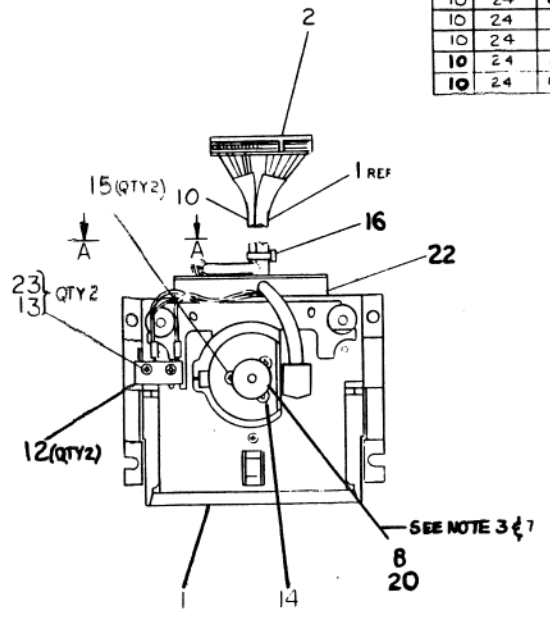
THIS DRAWING AND SPECIFICATIONS, HEREIN, ARE THE PROPERTY OF DIGITAL EQUIPMENT CORPORATION AND SHALL NOT BE REPRODUCED OR COPIED IN WHOLE OR IN PART AS THE BASIS FOR THE MANUFACTURE OR SALE OF ITEMS WITHOUT WRITTEN PERMISSION. COPYRIGHT © 1975, DIGITAL EQUIPMENT CORPORATION.

WIRE TABLE							
ITEM NO	DESCRIPTION	COLOR	FROM		TO		REMARKS
			CONN	WITH	CONN	WITH	
10	24	YEL	PT-2	---	SWI-5	---	
10	24	GRY	PT-1	---	SWI-2	---	
10	24	VIO	PT-3	---	SWI-3	---	
31	22	---	SW-6	SOLD	SWI-3	SOLD	BUS WIRE
10	24	GRN	PT-6	---	CI-3	---	
10	24	BRN	PT-8	---	CI-2	---	
10	24	BLU	PT-7	---	CI-1	---	
10	24	BLK	PT-5	---	MOTOR-	---	TWISTED PAIR
10	24	RED	PT-4	---	MOTOR+	---	TWISTED PAIR

8. ASSEMBLE ITEM #5, 29 USING 3.5-4.5 IN LBS TORQUE.
 9. CARTRIDGE WITHDRAWAL FORCE SHALL BE A MAXIMUM OF 4.5 LBS. AND WHEN AN EXCESS FORCE OF 1 LB. IS APPLIED TO THE DRIVE ROLLER (OUTWARD) AND IS REMOVED THE CARTRIDGE SHALL STILL BE AGAINST THE DRIVE REFERENCE STOPS.

NOTES:

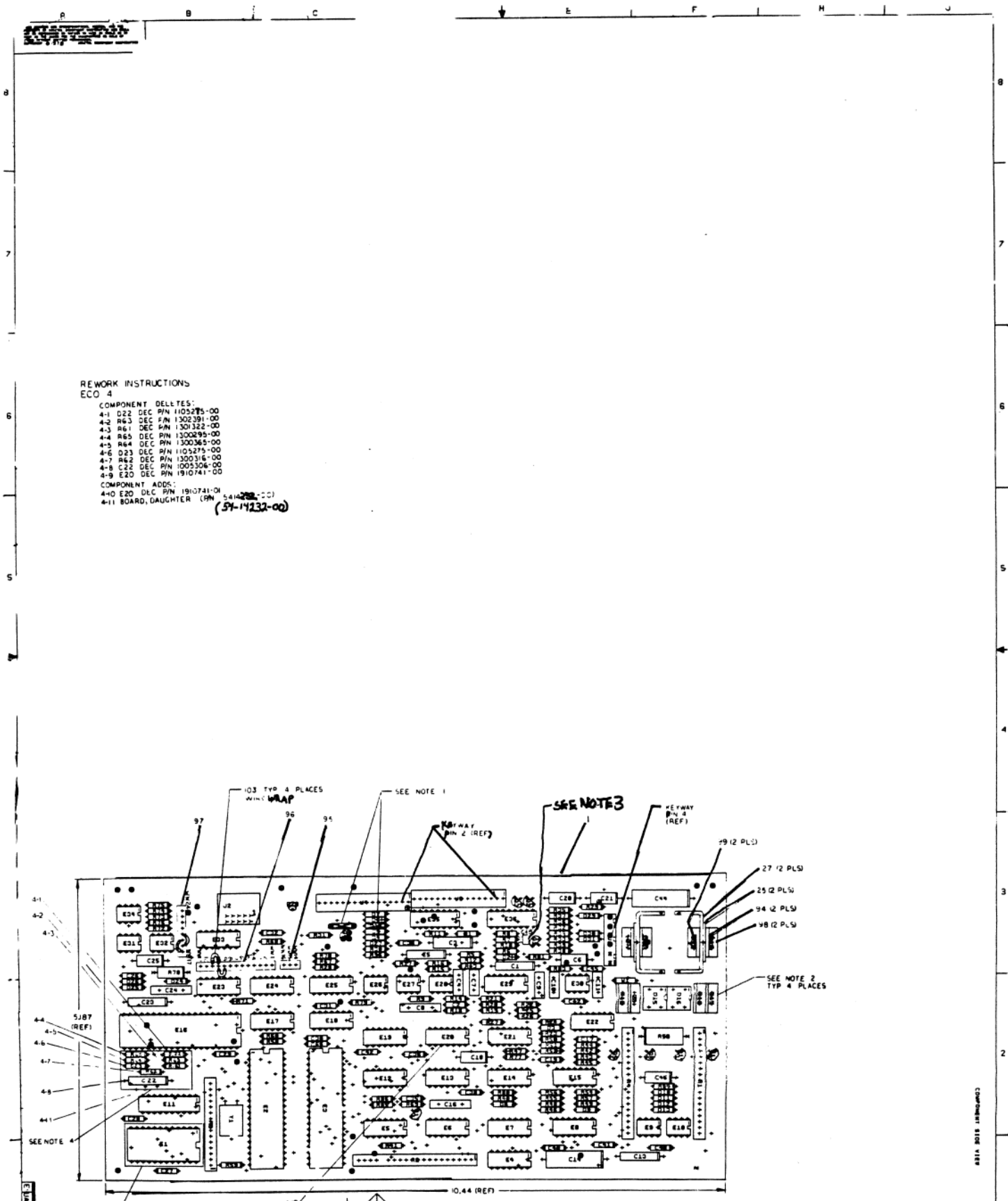
- MOTOR TO BE ROTATED TO PROVIDE EASIEST ACCESS TO TERMINALS PT4, PT5. MOTOR LEADS MAY BE BENT AS SHOWN IF NECESSARY TO CLEAR MOTOR MOUNT.
- CODE WHEEL ITEM #7 MUST ROTATE FREELY WITHOUT RUBBING IN SLOT IN OPTICAL SENSOR ITEM #9. TIGHTEN ITEM #20 TO 3.5 ± .5 IN LBS.
- SET DRIVE ROLLER, ITEM #8, TO BE FLUSH WITH END OF MOTOR SHAFT ITEM #11. TIGHTEN ITEM #20 TO 3.5 ± .5 IN LBS.
- TIGHTEN ITEMS 13 & 25 TO 2.0 ± .5 IN LBS.
- TIGHTEN ITEMS 15, 17 & 27 TO 3.5 ± .5 IN LBS.
- TIGHTEN ITEM 21 TO 5 ± .5 IN LBS.
- WHEN CARTRIDGE IS INSERTED INTO DRIVE THE FORCE ON THE DRIVE ROLLER (ITEM #8) IS TO BE 1 LB ± .1.



QTY	DESCRIPTION	MANUFACTURER	PART NO.	ITEM NO.
1	BUTTON, SUPPORT	MD	742356-00	34
2	WASHER	MD	742334-00	33
1	WASHER, FLAT	MD	742334-00	33
1	WIRE, BUS #22 AWG	QI	07560-01	31
1	LABEL, SERIAL NO.		3616502-00	30
2	WASHER, LOCK #4	9006688-00		29
2	WASHER, FLAT #4	9006688-00		29
2	SCREW, PAN HD 4-40X.31	9006010-01		27
1	NUT, #2-56	9006555-00		26
1	SCREW, FL HD 2.5X.25	9006001-02		25
1	SPRING, SUPPORT	9006001-02		24
3	WASHER, LOCK #2	9006686-00		23
1	CLAMP, CABLE	6MD	7424910-00	22
2	SCREW, PAN HD 6-32X.25	9006001-01		21
2	SETScrew, #4-40X.25	9006075-00		20
1	SCREW, PAN HD 4-40X.50	9006073-01		19
2	WASHER, SPLIT LOCK #2	9007801-00		17
2	TIE, CABLE	9007031-00		16
2	SCREW, PAN HD 4-40X.25	9008301-02		15
1	SCREW, FL HD 4-40X.25	9006009-02		14
2	SCREW, PAN HD 2.5X.62	9006025-01		13
2	SWITCH, SPDT	1201782-00		12
1	MOTOR 12V DC SERVO	1215	602-00	11
1	CABLE, TYPE DRIVE	DIK	701607-00	10
1	OPTICAL SENSOR	9015	701-00	9
1	DRIVE ROLLER	1216	231-00	8
1	WHEEL, CODE	6MD	7420699-00	7
1	CLAMP	6MD	741652-00	6
1	HUB, ENCODER	6MD	7420691-00	5
2	SPRING, BEVEL	6MD	7423412-00	4
2	LOCK ROLLER	6MD	7420450-00	3
1	COVER, CONN	1216	44-00	2
1	HEAD MTG ASSY	D-1A	701608-00	1

REV.	DATE	BY	CHKD	DESCRIPTION
1	17/05/10	JA	JA	INITIAL RELEASE
2	11/08/14	JA	JA	REVISED FOR 3.5 INCH DRIVE
3	11/08/14	JA	JA	REVISED FOR 3.5 INCH DRIVE
4	11/08/14	JA	JA	REVISED FOR 3.5 INCH DRIVE

QUANTITY & VARIATION	DESCRIPTION	DWG PART NO	ITEM NO.
UNLESS OTHERWISE SPECIFIED DIMENSIONS ARE IN INCHES			
ANGLES	CLASS OF ACCURACY	TOLERANCES	
RF 30°	0	0.1	0.01
SURFACE QUALITY	CHECK ONLY	0.1	0.01
IN	MEDIUM	0.008	0.004
	PREFERRED	0.012	0.006
THIRD ANGLE PROJECTION	DRN	11-72	FIRST USED ON
REMOVE BURRS AND BREAK SHARP CORNERS	CHKD	JA	T058-XA
DO NOT SCALE DWG	ENG	JA	T058-XA
MATERIAL	PROJ. ENG.	JA	T058-XA
FINISH	PROD.	JA	T058-XA
	NEXT HIGHER ASSY		
	MATERIAL	B-P-E-T058-XA	SIZE CODE
	SCALE	1/1	D
	SHEET	1 OF 1	DIST
			NUMBER
			7015510-0-0
			REV. B



REWORK INSTRUCTIONS
ECO 4

COMPONENT DELETES:

- 4-1 D22 DEC P/N 1105275-00
- 4-2 R63 DEC P/N 1302391-00
- 4-3 R61 DEC P/N 1301322-00
- 4-4 R65 DEC P/N 1300295-00
- 4-5 R64 DEC P/N 1300365-00
- 4-6 D23 DEC P/N 1105275-00
- 4-7 R62 DEC P/N 1300316-00
- 4-8 C22 DEC P/N 1005306-00
- 4-9 E20 DEC P/N 1910741-00

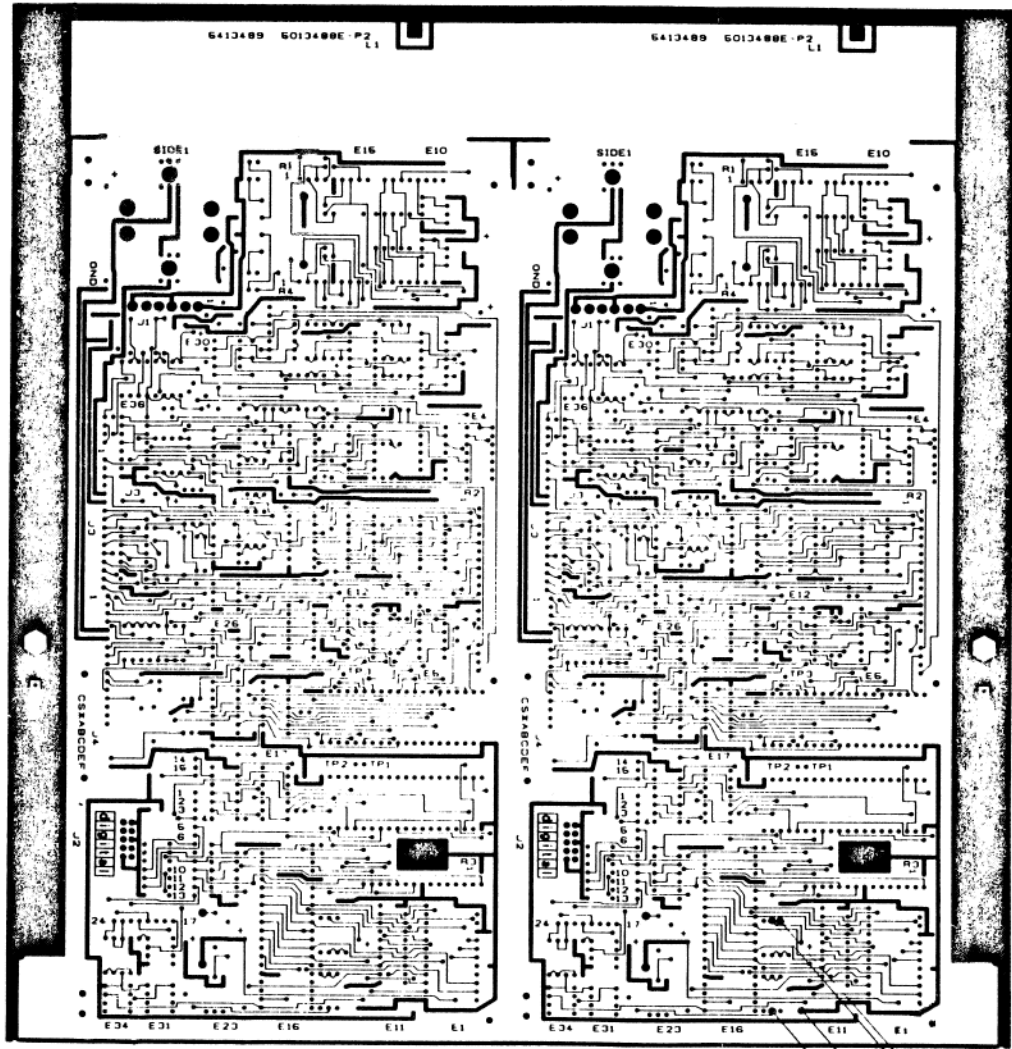
COMPONENT ADDS:

- 4-0 E20 DLC P/N 1910741-01 ⁵⁴¹⁴²³²⁻⁰⁰
- 4-11 BOARD, DAUGHTER (P/N **5414232-00**)

<p>NOTES:</p> <ul style="list-style-type: none"> 1. ALL WORK SHALL BE DONE IN ACCORDANCE WITH THE CURRENT DESIGN DRAWINGS AND THE CURRENT DRAWING AT THE LOCATION OF THE WORK. 2. REWORK TO ADD P/A SHALL BE MAINTAINED BETWEEN MODULES. 	<table border="1" style="width: 100%; border-collapse: collapse;"> <tr> <td>DATE</td> <td>BY</td> <td>APP</td> </tr> <tr> <td> </td> <td> </td> <td> </td> </tr> </table>	DATE	BY	APP				<table border="1" style="width: 100%; border-collapse: collapse;"> <tr> <th>STAMP</th> <th>DATE</th> <th>TITLE</th> </tr> <tr> <td> </td> <td> </td> <td> </td> </tr> </table>	STAMP	DATE	TITLE				<table border="1" style="width: 100%; border-collapse: collapse;"> <tr> <td> </td> <td> </td> <td> </td> </tr> <tr> <td> </td> <td> </td> <td> </td> </tr> <tr> <td> </td> <td> </td> <td> </td> </tr> </table>									
DATE	BY	APP																						
STAMP	DATE	TITLE																						
<p>APPROVED FOR: digital</p> <p> </p> <p> </p> <p> </p> <p> </p> <p> </p> <p> </p> <p> </p> <p> </p> <p> </p>	<p>TITLE: SERIAL T05B</p> <p> </p> <p> </p> <p> </p>			<p> </p> <p> </p> <p> </p> <p> </p> <p> </p> <p> </p> <p> </p>																				

COMPARISON 1511 1511 1511 1511

1. THIS DRAWING IS THE PROPERTY OF THE AIR FORCE. IT IS TO BE KEPT IN CONFIDENCE AND IS NOT TO BE REPRODUCED OR TRANSMITTED IN ANY FORM OR BY ANY MEANS, ELECTRONIC OR MECHANICAL, INCLUDING PHOTOCOPYING, RECORDING, OR BY ANY INFORMATION STORAGE AND RETRIEVAL SYSTEM.

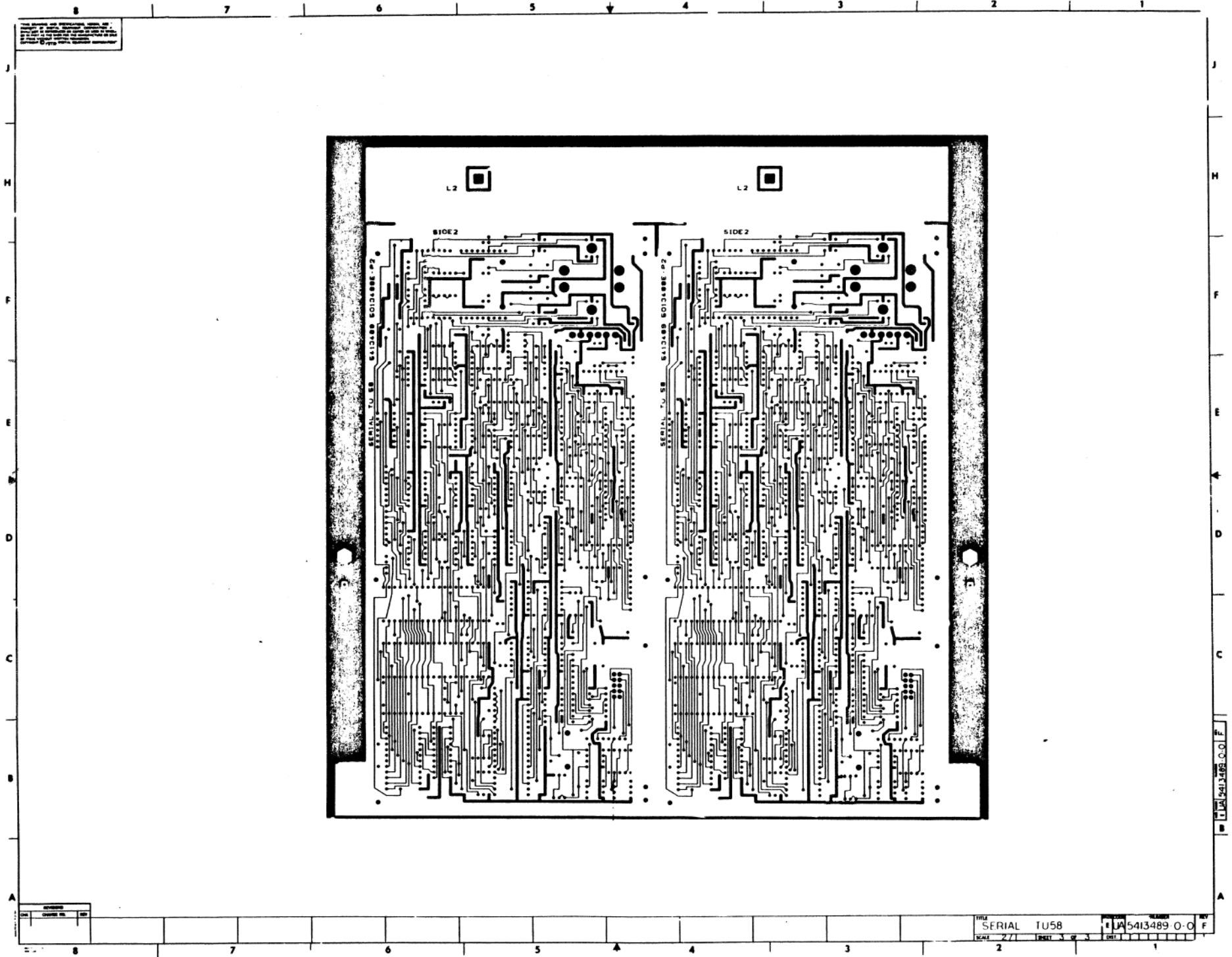


NOTE: THESE PADS SHOULD BE USED TO INTERCONNECT WITH DAUGHTER MODULE (5414232). ALSO, BE INTERFERENCE PREVENT EXISTS BETWEEN 5414232 AND R3. R3 SHOULD BE UNSOLDERED, REPOSITIONED TO ALLOW DAUGHTER BOARD INSERTION AND THEN RESOLDERED TO THE MODULE. CAUTION, DO NOT BEND R3.

1 2 3 4 5 6 7 8

REV	DATE	BY

THIS DRAWING AND SPECIFICATIONS SHALL BE USED FOR THE FABRICATION OF THIS BOARD ONLY. NO OTHER BOARD SHALL BE FABRICATED FROM THIS DRAWING. ALL DIMENSIONS ARE IN INCHES UNLESS OTHERWISE SPECIFIED. DRAWN BY: J. W. B. CHECKED BY: J. W. B. DATE: 10/27/68

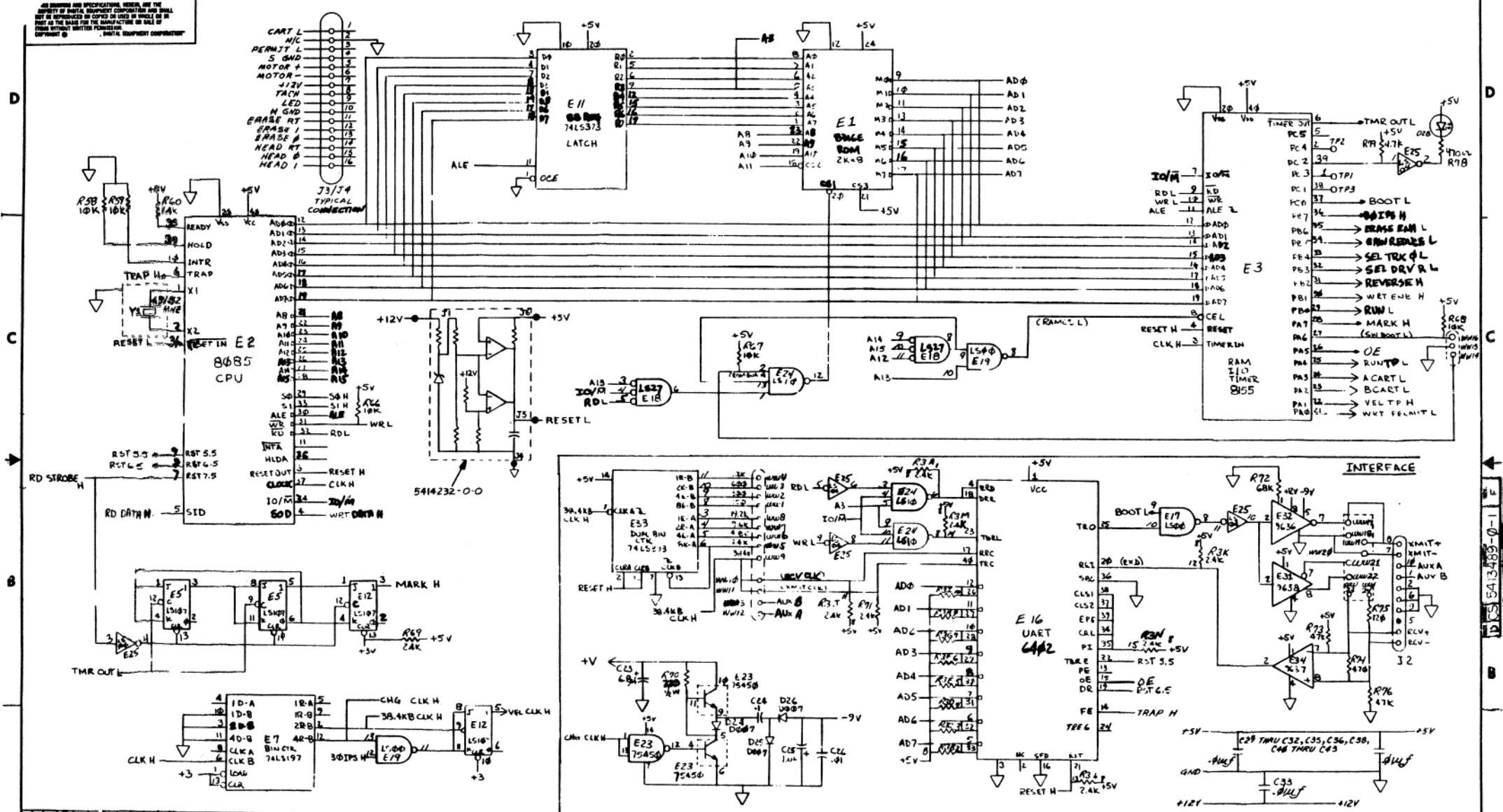


REV	DATE	BY	CHK
1	10/27/68	J. W. B.	J. W. B.

TITLE SERIAL TU 58
SCALE 2/1
PART 3 OF 3
REV F
LA 5413489 O-O

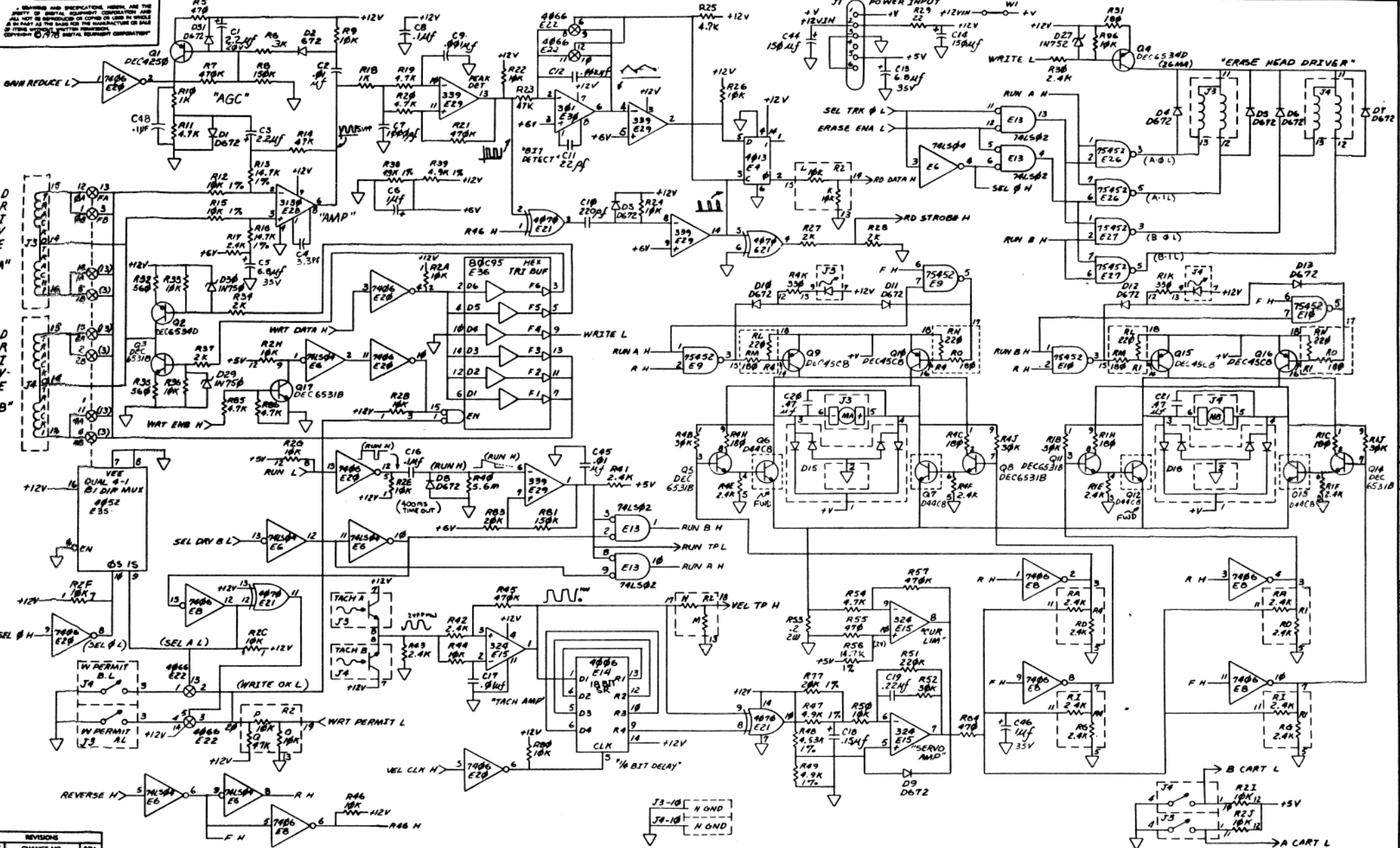
LA 5413489 O-O F

ALL DIMENSIONS AND SPECIFICATIONS...
PROPERTY OF DIGITAL EQUIPMENT CORPORATION...
NOT BE REPRODUCED OR COPIED IN WHOLE OR IN PART AS THE BASIS FOR THE MANUFACTURE OR SALE OF EQUIPMENT WITHOUT WRITTEN PERMISSION...
DIGITAL EQUIPMENT CORPORATION



REVISIONS table with columns for DATE, CHANGE NO., BY, and DESCRIPTION.

Engineering drawing header information including: DRAWN BY: M. LEIS, CHECKED BY: H. LEIS, TITLE: TUSB ELECTRONICS, SERIAL, and other project details.



REV.	CHANGE NO.	REV.

TITLE TU58 ELECTRONICS: SERIAL		SIZE: 11	NUMBER: DCS 54 13489-0-1	REV. F
SCALE: 11	SHEET: 2 OF 2	DIST.:		

LINE	ITEM	DOCUMENT NUMBER	PART NUMBER	DESCRIPTION	QTY PER VARIATION	REFERENCE DESIGNATOR
					00	
1	1		5013488-00	TU58 ELECTRONIC SERIAL	1	
2	2		1215816-00	HEADER,100 15POS STRAIGHT	2	J3,J4
3	3		1000021-00	220.0 MMF 100V 5%200PPM DM15S	1	C10
4	4		1000023-00	*** THIS ITEM IS NOT USED ***	-	
5	5		1010978-36	.1 MFD 50V 10% 2C067 CER	4	C8,C16,C24,C47
6	6		1000042-00	1000.0 MMF 100V 5%200PPM DM15S	2	C9,C7
7	7		1001610-00	.01 MFD 50V -20+80 Z5U AXIAL	18	C2,C17,C27-C33,C35,C36,C38,C40,
						CONT C41,C42,C43,C45,C26
8	8		1001776-00	1 MFD 35V 10% S,TANT	3	C6,C25,C46
9	9		1002315-00	2000.0 MMF 500V 5%200PPM DM19S	1	C12
10	10		1013466-21	3.3 MMF 50V+- .5PF CER.	1	C4
11	11		1002431-00	2.2MFD 35V 10% 150S S.TA	2	C1,C3
12	12		1005306-00	6.8MFD 35V 10% S,TANT	3	C5,C13,C23
13	13		1005334-00	*** THIS ITEM IS NOT USED ***	-	
14	14		1005820-00	22.0 MMF 100V 5%200PPM DM15S	1	C11
15	15		1010978-40	.22 MFD 50V 10% 2C067 CER	1	C19
16	16		1011895-00	.15 MFD 35V 10% 150D S.TA	1	C18
17	17		1012312-00	.47 MFD 50V XZ CER.	2	C20,C21
18	18		1100101-00	D 007 TR=300NS PIV=115V GN	3	D24,D25,D26
19	19		1102808-00	1N 752A VZ= 5.6 5% .40W	1	D27
20	20		1105275-00	D 672 TR= 15NS PIV= 60V SI	14	D1-D13,D31
21	21		1110324-00	LED 1MCD@10MA PIV=3	1	D28
22	22		1115369-00	VM 18 PIV=100 I=1A	2	D15,D16
23	23		1213506-04	HEADER 10POS RT ANGLE W/3 SI	1	J2
24	24	USED FOR E1	1212385-04	SOCKET 24PIN IC	1	
25	25	USED FOR Q7 & Q12	1213071-06	INSULATOR,RUBBER SILICONE	2	
26	26		1213113-01	*** THIS ITEM IS NOT USED ***	-	
27	27		1213418-01	HEAT SINK,VERTICLE MNT,ALUMINUM	2	
28	28		1300247-00	120 1/4W 5% CC	1	R75
29	29		1300274-00	220 1/2W 5% CC	1	R70

REVISION HISTORY			BASIC PART NO: 5413489			DRN: DAN MUTNANSKY			DATE: 22-MAY-78			D I G I T A L		
ENG	ECO NUMBER	REV	SECTION A OF A	CHK'D:	P. ROSSMAN	DATE:	6-JUNE-78	TITLE	PARTS LIST					
	INIT	C	SECTION,VARIATION INDEX	CHK'D:	P. ROSSMAN	DATE:	6-JUNE-78	SERIAL TU58						
PB	5413489-ML001	D	[A] 00	DES.ENG:	MIKE LEIS	DATE:	22-MAY-78	DOCUMENT NUMBER						
ML	5413489-ML003	E	[B]	RESP.ENG.:	M. LEIS	DATE:	6-JUNE-78	SIZE	CODE	NUMBER	REV			
ML	5413489-ML004	F	[C]	MFG.ENG.:	P. BARTON	DATE:	6-JUNE-78	K	PL	5413489-0-DBP	F			
			[D]	ASSEMBLY NUMBER:		TOP DOCUMENT NUMBER:		FILE NAME:	EDIT #					
			[E]	E-UA-5413489-0-0		TU58		Z0582F.PLS	32					
			[F]											
			[G]											
			[H]											
			[I]											
			[J]											
			[K]											
			[L]											
			[M]											
			[N]											

*THIS DRAWING AND SPECIFICATIONS HEREIN, ARE THE PROPERTY OF DIGITAL EQUIPMENT CORPORATION AND SHALL NOT BE REPRODUCED OR COPIED OR USED IN WHOLE OR IN PART AS THE BASIS FOR THE MANUFACTURE OR SALE OF ITEMS WITHOUT WRITTEN PERMISSION. COPYRIGHT (C) 1979. DIGITAL EQUIPMENT CORPORATION *

LINE ITEM	DOCUMENT NUMBER	PART NUMBER	DESCRIPTION	QTY PER VARIATION	REFERENCE DESIGNATOR
				00	
30	30	1300316-00	470 1/4W 5% CC	5	R5,R55,R74,R78,R84
31	31	1300365-00	1 K 1/4W 5% CC	2	R10,R18
32	32	1300295-00	*** THIS ITEM IS NOT USED ***	-	
33	33	1300447-00	4.7 K 1/4W 5% CC	8	R11,R19,R20,R25,R54,R79,R85,R86
34	34	1300479-00	10 K 1/4W 5% CC	16	R9,R22,R24,R26,R44,R46,R50,R58, R59,R66,R67,R68,R80,R33,R36,R96
					CONT
35	35	1301322-00	180 1/4W 5% CC	1	R31
36	36	1301327-00	68 K 1/4W 5% CC	1	R72
37	37	1300432-00	3 K 1/4W 5% CC	1	R6
38	38	1301969-00	22 1/4W 5% CC	1	R29
39	39	1302092-00	220 K 1/4W 5% CC	1	R51
40	40	1302177-00	47 K 1/4W 5% CC	4	R14,R23,R73,R76
41	41	1302388-00	2 K 1/4W 5% CC	4	R27,R28,R34,R37
42	42	1302391-00	20 K 1/4W 5% CC	1	R83
43	43	1302394-00	30 K 1/4W 5% CC	1	R52
44	44	1302396-00	150 K 1/4W 5% CC	2	R8,R81
45	45	1302398-00	470 K 1/4W 5% CC	4	R7,R21,R45,R57
46	46	1302941-00	14.7 K 1/4W 1% RN55D-F 100PPM	3	R13,R16,R56
47	47	1303177-00	2.4 K 1/4W 5% CC	8	R17,R30,R41,R42,R43,R60,R69,R71
48	48	1303312-00	10.0 K 1/4W 1% RN55D-F 100PPM	2	R12,R15
49	49	1305324-00	4.99 K 1/4W 1% RN55D-F 100PPM	4	R38,R39,R47,R49
50	50	1309386-00	5.6 M 1/4W 5% CC	1	R40
51	51	1311466-00	*** THIS ITEM IS NOT USED ***	-	
52	52	1311466-00	.20 2W 5% WW	1	R53
53	53	1313596-00	20 K 1/4W 1% RN55D-F 100PPM	1	R77
54	54	1315660-00	R NETWORK 16-10K,1-4.7K RESISTOR	1	R2
55	55	1315661-00	R NETWORK 15-180 15-30K	2	R1,R4
56	56	1315662-00	R NETWORK 14-2.4K RESISTORS,10%	1	R3
57	57	1503409-00	DEC6534D PNP 310MW SI 40 90	2	Q2,Q4
58	58	1509142-00	DEC4250 PNP 200MW SI 40250	1	Q1
59	59	1509338-00	DEC6531B NPN 310MW SI 40 90 P	6	Q3,Q5,Q8,Q11,Q14,Q17
60	60	1510421-00	D 44CB NPN 30WT SI 60 20	4	Q6,Q7,Q12,Q13
61	61	1510598-00	DEC45CB PNP 27WT SI 60 20 Y	4	Q9,Q10,Q15,Q16
62	62	1812396-06	XTAL 4.9152 MHZ	1	Y1
63	63	1910282-00	301AN OP AMP	1	E30
64	64	1910645-00	75452 DRIVER,PERIPH,DUAL,	4	E9,E10,E26,E27
65	65	1910741-00	7406 INVERTER GATE-HEX 1I	1	E8
66	66	1911242-00	75450B DRIVER,PERIPH,DUAL,	1	E23
67	67	1912107-00	324 OP AMP,QUAD	1	E15
68	68	1912108-00	339 VOLT CMPTR,QUAD	1	E29
69	69	1912799-00	LS00 NAND-GATE-QUAD 2IN,P	2	E17,E19
70	70	1912801-00	LS02 NOR-GATE-QUAD 2IN	1	E13
71	71	1912803-00	LS04 INVERTER GATE-HEX 1I	2	E6,E25
72	72	1912807-00	LS10 NAND GATE-TRIPLE 3IN	1	E24
73	73	1912813-00	LS27 NOR GATE-TRIPLE 3IN	1	E18
74	74	1912832-00	LS107 FF-JK DUAL MASTER/SL	2	E5,E12
75	75	1912857-00	LS197 COUNTER,BINARY,PRESET	1	E7
76	76	1914451-00	74LS393 COUNTER,BINARY,4BIT	1	E33

TITLE	SECTION A OF A	SIZE CODE	DOCUMENT NUMBER	REV
D I G I T A L SERIAL T058	SECTION A OF A	K PL	5413489-0-DBP	F

LINE ITEM	DOCUMENT NUMBER	PART NUMBER	DESCRIPTION	QTY PER VARIATION 00	REFERENCE DESIGNATOR
77	77	1914466-00	3130E OP AMP MOS/FET IN,CM	1	E28
78	78	1915219-00	LS373 FF-D OCTAL-TRANSPARE	1	E11
79	79	1915415-00	9636 DRIVER,DUAL,EIA RS-	1	E32
80	80	1915416-00	9637 RECEIVER,DUAL,RS-42	1	E34
81	81	1915417-00	9638 DRIVER,DUAL,EIA RS-	1	E31
82	82	2113605-00	4006B SHIFT REG .18STAGE S	1	E14
83	83	2113609-00	4013B FF-D DUAL W/SET/RESE	1	E4
84	84	2113630-00	4052B MULTIPLEXER 4CHAN DI	1	E35
85	85	2113632-00	4066B BILATERAL SWITCH-QUA	1	E22
86	86	2113634-00	4070B X-OR GATE-QUAD CMOS	1	E21
87	87	2113937-00	UART 125K BUAD	1	E16
88	88	2114663-00	MM 80C95 BUFFER-GATE-HEX TRIS	1	E36
89	89	2114963-00	UP,8-BIT NMOS	1	E2
90	90	2114964-00	RAM 2048 MOSJ-STATIC	1	E3
91	91	23089E2-00	E2-01	1	E1
92	92	1212619-07	HEADER.156 6POS STRAIGHT	1	J1
93	93	9009185-00	JUMPER, WIRE, INSULATED, BLACK B	1	W1
94	94	USED FOR Q7 & Q12 9010057-00	WASHER, INSULATING SHOULDER FOR	2	
95	95	1215816-01	HEADER.100 3POS STRAIGHT	1	
96	96	1215816-02	HEADER.100 13POS STRAIGHT	1	
97	97	1215816-03	HEADER.100 8POS STRAIGHT	1	
98	98	9006011-01	SCREW,PAN,PHIL, 4-40X 3/8 S	2	
99	99	9006557-00	NUT,KEP , 4-40X 1/4 AF	2	
100	100	1100124-00	1N 750A VZ= 4.7 5% .40W P	2	D29,D30
101	101	1301890-00	560 1/4W 5% CC	2	R32,R35
102	102	1313840-00	4.53 K 1/4W 1% RN55D-F 100PPM	1	R48
103	103	9105740-55	WIRE(WRAF)30AWG UL1423	A/R	
104	104	1012084-03	150 MFD MAX16B 6% 300 AL EL	2	C44,C14
105	105	9107256-11	*** THIS ITEM IS NOT USED ***	-	
106	106	1910741-01	7406N BUFFER,HEX	1	E20
107	107	5414232-00	TUSB POWER RESET SERIAL	1	

! D ! I ! G ! I ! T ! A ! L !	! TITLE	! SECTION A OF A	! SIZE ! CODE !	! DOCUMENT NUMBER	! REV !
! ! ! ! ! ! ! ! ! !	SERIAL TUSB	! ! ! ! !	! K ! PL !	5413489-0-DBP	! F !

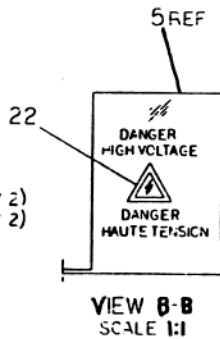
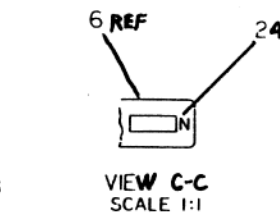
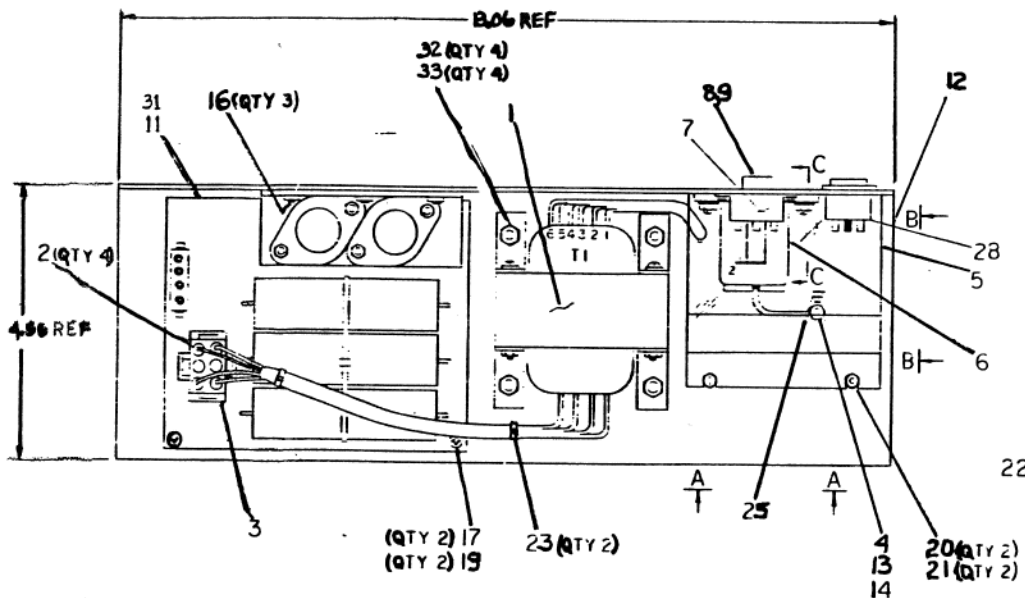
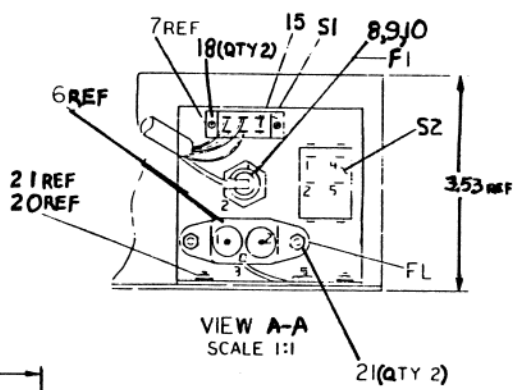
DIGITAL EQUIPMENT CORPORATION PARTS LIST				QUANTITY / VARIATION								NOTES:		
MADE BY <i>278 PELLEWIN</i>	CHECKED <i>P. Moore</i>	SECTION		7016753-0	7016753-01									REF DESIGNATION
DATE <i>12 APR 75</i>	DATE <i>12 APR 75</i>													
ENG <i>P. Moore</i>	PROD <i>P. Moore</i>	ISSUED SECTION												
DATE <i>12 APR 75</i>	DATE <i>12 APR 75</i>													
ITEM NO.	DRAWING NO.	PART NO.	DESCRIPTION											
1	C-MD-7422173-0-0	7422173-0	BRACKET, MOUNTING	4	-									
2		9008190-00	BUMPER, RUBBER	4	4									
3		9006071-01	SCREW, PAN HD PEL #10-32 x .38	4	4									
4		9006635	WASHER, LOCK, INT TOOTH #10	4	4									
5		3616450-00	LABEL, CONFIGURATION	1	-									
6	A-PS-9905129-0-0	9905129-20	BAG, PLASTIC	1	1									
7	C-MD-7423311-0-0	7423311	BRACKET, MTG.	-	4									

E.C.O. NO. PL1001	THIS DRAWING AND SPECIFICATIONS, HEREIN ARE THE PROPERTY OF DIGITAL EQUIPMENT CORPORATION AND SHALL NOT BE REPRODUCED, OR COPIED OR USED IN WHOLE OR IN PART AS THE BASIS FOR THE MANUFACTURE OR SALE OF ITEMS WITHOUT WRITTEN PERMISSION. COPYRIGHT © 1975 DIGITAL EQUIPMENT CORPORATION.	TITLE INSTALLATION ASSY	ASSY NO.	SIZE B	CODE PL	NUMBER 7016753-0-0	REV. A
			SHEET 1 OF 1	INSERTION PARTS LIST DATA BASE REV			

D1AD7017372-0-0

WIRE TABLE

ITEM NO	DESCRIPTION	AWG	COLOR	FROM CONNECTION WITH	TO CONNECTION WITH	REMARKS
18	BLUE	TI-7		PI-6	3&2	9.37 LG
	BLUE	TI-8		PI-4	3&2	9.37 LG
	BLU/BLK	TI-9		PI-3	3&2	10.00 LG
	BLU/BLK	TI-10		PI-1	3&2	10.00 LG
26	GRN/YEL	FLI-3	SOLDER	GRN	4x4	3.0 LG
27	BROWN	FLI-1	SOLDER	S2-4	30	4.25 LG
	RED	TI-1		FI-2	SOLDER	6.5 LG
	RED	TI-2		SI-2A	SOLDER	4.5 LG
	RED/YEL	TI-3		SI-1		5.5 LG
	BLACK	TI-4		SI-2		4.5 LG
	WHITE	TI-5		SI-1A	SOLDER	4.0 LG
	WHITE	TI-6		S2-2	30	7.0 LG
15		SI-1B	SOLDER	SI-2B	SOLDER	.5 LG
27	BRN	S2-5	30	FI-1	SOLDER	3.0 LG
29	18 WHY	S2-1	30	FLI-2	SOLDER	3.0 LG



CAUTION : OFF SHEET PARTS LIST EXISTS
SEE B-PL-7017372-0-0

DESCRIPTION	DRAWING NO.	PART NO.	DIMENSION RANGE IN INCHES			
			OVER	UNDER	OVER	UNDER
UNLESS OTHERWISE SPECIFIED DIMENSIONS ARE IN INCHES AND THE FOLLOWING TOLERANCES APPLY (PER DEC STD 114) TUS3-EX						
INCHES DIMENSIONS			12	12	12	12
ANGLES			12	12	12	12
SURFACE QUALITY			12	12	12	12
FINISH			12	12	12	12
QUANTITY & VARIATION			12	12	12	12
THIRD ANGLE PROJECTION		DATE	TITLE			
DO NOT SCALE DRAWING		DATE	POWER SUPPLY ASSY.			
REMOVE BURRS AND BREAK SHARP CORNERS		DATE	digital			
MATERIALS SEE PART LIST		DATE	D1AD7017372-0-0			
FINISH		DATE	REV 1			

A

digital PARTS LIST				QUANTITY / VARIATION										NOTES			
DRN DATE	DES ENG DATE	ARG ENG DATE	NEXT HIGHER DOC														
CHK'D DATE	RESP ENG DATE																
ITEM NO	DRAWING NO	PART NO	DESCRIPTION														REFERENCE DESIGNATORS
1		1616062-00	TRANSFORMER, POWER	1													
2		1212170-00	CONTACT FEMALE (SOCKET)	4													
3		1212167-06	CONNECTOR, PLUG, 6 PIN	1													
4		9007930-00	RING TERMINAL RED #10	1													
5	D-AD-7423655-C-0	7423655-00	SHIELD, PROTECTIVE	1													
6		1215905-00	POWER RECEPTACLE AND LINE FILTER	1													
7		1216901-00	DPDT SWITCH (115-230V)	1													
8		1216391-	FUSE HOLDER (25A-300V)	1													
9		1211237-00	FUSE, .750A, 250V, SLO BLOW	1													
10		9107305-02	TUBING, SHRINK (RED)	A/R													
11	D-DA-5413609-0-0	5413609-00	REGULATOR BOARD	1													
12	D-DA-7423654-0-0	7423654-00	BRACKET, POWER SUPPLY	1													
13		9006664-00	WASHER, FLAT #10	1													
14		9006565-00	NUT, KEP #10-32	1													
15		9107560-03	WIRE, BUSS #18 AWG	A/R													
16		9006022-02	SCREW, FLAT, HD, PHL, #6-32 x 3/8	3													
17		9006022-01	SCREW, PAN HD, PHL, 6-32 x 3/8	2													
18		9009280-00	NUT, HEX #4-40	2													
19		9007649-00	WASHER, LOCK EXTERNAL TOOTH #6	2													
20		9006659-00	WASHER, FLAT, #6	2													

ECD NO
INIT. A

THIS DRAWING AND SPECIFICATIONS HEREIN ARE THE PROPERTY OF DIGITAL EQUIPMENT CORPORATION AND SHALL NOT BE REPRODUCED OR COPIED OR USED IN WHOLE OR IN PART AS THE BASIS FOR THE MANUFACTURE OR SALE OF ITEMS WITHOUT WRITTEN PERMISSION FROM DIGITAL EQUIPMENT CORPORATION. COPYRIGHT © 1960

TITLE
POWER SUPPLY ASSY

ASSY. NO
D-AD-7017372-0-0

SIZE
B PL

NUMBER
7017372-0-0

REV
A

DRG 125A

SECTION 1 OF 1

SHEET 1 OF 1

digital PARTS LIST				QUANTITY / VARIATION										NOTES:			
DRN. DATE	DES. ENG. DATE	MFG. ENG. DATE	NEXT HIGHER DOC.														
CHK'D DATE	RESP. ENG. DATE																
ITEM NO.	DRAWING NO.	PART NO.	DESCRIPTION														REFERENCE DESIGNATORS
21		9006560-00	NUT, KEP 6-32	4													
22		3616053-00	DECAL, HIGH VOLTAGE	1													
23		9007031-00	TIE, CABLE	2													
24		3615998-00	NEUTRAL, STICKER	1													
25		3612680-01	GROUND STICKER	1													
26		9107410-54	WIRE, STRD., #18 AWG, GRN/YEL	A/R													
27		9107360-11	WIRE, STRD., #18 AWG BROWN	A/R													
28		121E552-00	SWITCH, 250 VAC	1													
29		9107360-99	WIRE, STRD #18 AWG WHITE	A/R													
30		9007970-00	TERM, QUICK CONN RED 22-18 AWG	4													
31		9008268-00	THERMAL COMPOUND	A/R													
32		9006666-00	WASHER, FLAT #8	4													
33		9006563-00	NUT, KEP #8-32	4													

ECONOM

*THIS DRAWING AND SPECIFICATIONS HEREIN ARE THE PROPERTY OF DIGITAL EQUIPMENT CORPORATION AND SHALL NOT BE REPRODUCED OR CIRCULATED OR USED IN WHOLE OR IN PART AS THE BASIS FOR THE MANUFACTURE OR SALE OF ITEMS WITHOUT WRITTEN PERMISSION. COPYRIGHT © 1981 DIGITAL EQUIPMENT CORPORATION.

TITLE
POWER SUPPLY ASSY

ASSY. NO.
D-AD-7017372-0-0
SECTION 1 OF 1

SIZE CODE
B PL

NUMBER
7017372-0-0

REV.
A
SHEET 2 OF 2

The drawings and specifications herein are the property of Digital Equipment Corporation and are not to be reproduced or copied in whole or in part without the express written permission of Digital Equipment Corporation.

DIGITAL EQUIPMENT CORPORATION MAYNARD MASSACHUSETTS			
PACKAGING INSTRUCTION		REV. <u>A</u>	DATE: <u>3/80</u>
TITLE: PKG PROCESSOR SB11, TUS8, TUS8L, TUS58			
LEGEND			
VARIATION	UP/DOWN	PACKAGE TYPE	REMARKS
37-00490-00	SB11-AA	Customer	N/A
	SB11-BA		
	SB11-CA		
	SB11-DA		
	SB11-EA		
	SB11-FA		
37-00490-01	TUS8-FA	Customer	N/A
	TUS8-VA		
	TUS8-LFA		
37-00490-02	TUS58-FA		
PARTS LIST 37-00490-00			
QUANTITY	DWG/PART NUMBER	DESCRIPTION	
2	99-06547-00	Pad, Molded Foam	
1	99-06546-00	Carton, Regular Slotted	
3-1/2 ft.	99-05729-00	Tape, Carton Sealing	
PACKAGING INSTRUCTIONS 37-00490-00 (Figure 1)			
STEP	PROCEDURE		
1.	Follow General Guidelines (A-SP-3700349-0-0) for construction of foam pads using Mold Box (99-06547-00) and Mold Insert (99-06547-00).		
2.	Place one Foam Pad (99-06547) on each end of the SB11.		
3.	Set up the Regular Slotted Carton (99-06546-00) and seal bottom using one strip (21 inches) of Carton Sealing Tape (99-05729-00).		
4.	Slide SB11 (with End Caps) into the Regular Slotted Carton (99-06546-00).		
5.	Close top flaps and seal using 21 inches of Carton Sealing Tape (99-05729-00).		
6.	Palletize as per Figure 4 using four (4) Angle Board (99-06185-14) and four (4) strapping (99-06734-02).		
ENG. <u>David Chalko</u>	APPD. <u>A.B. Peltier</u>	SIZE <u>A</u>	NUMBER <u>3700490-00</u> REV. <u>A</u>
SHEET <u>1</u> OF <u>7</u>			

PACKAGING INSTRUCTION		CONTINUATION SHEET	
TITLE: PKG PROCESSOR SB11, TUS8, TUS8L, TUS58		REV. <u>A</u> DATE: <u>3/80</u>	
PARTS LIST 37-00490-01			
QUANTITY	DWG/PART NUMBER	DESCRIPTION	
2	99-06547-00	Pad, Molded Foam	
1	99-06546-00	Carton, Regular Slotted	
3 ft.	99-06200-00	Bubblewrap, Antistatic	
3.5 ft.	99-05729-00	Tape, Carton Sealing	
PACKAGING INSTRUCTIONS (3700490-01)			
STEP	PROCEDURE (Figure 2)		
1.	Follow General Guidelines (A-SP-3700349-0-0) for construction of foam pads, using Mold Box and Mold Insert (9906547-00).		
2.	Set up the Regular Slotted Carton (9906546-00) and seal bottom using one strip (21 inches) of Carton Sealing Tape (9905729-00).		
3.	Place one Foam Pad (9906547-00) on each end of the TUS8.		
4.	Slide TUS8 with end caps in position half way inside Regular Slotted Carton (9906546-00).		
5.	Now take the Power Cable, wrap it in Bubble Wrap (9906200-00), and place it over TUS8 Unit. (See Figure 2).		
6.	Slide the TUS8 Unit with end caps completely into Regular Slotted Carton (9906546-00).		
7.	Close the top flaps and seal using 21 inches of Carton Sealing Tape (9905729-00).		
8.	Palletize as per Figure 4 using four (4) Angle Board (9906185-14) and four (4) Strapping (9906734-02).		
ENG. <u>David Chalko</u>	APPD. <u>A.B. Peltier</u>	SIZE <u>A</u>	NUMBER <u>3700490-00</u> REV. <u>A</u>
SHEET <u>2</u> OF <u>7</u>			

PACKAGING INSTRUCTION		CONTINUATION SHEET	
TITLE: PKG PROCESSOR SB11, TUS8, TUS8L, TUS58		REV. <u>A</u> DATE: <u>3/80</u>	
PARTS LIST 3700490-02 (TUS58-FA)			
QUANTITY	DWG/PART NUMBER	DESCRIPTION	
2	99-06547-00	Pad, Molded Foam	
1	99-06546-00	Carton, Regular Slotted	
1	99-06663-00	Folder, One Piece	
4 ft.	99-06200-00	Bubblewrap, Antistatic, Pink	
4-1/2 ft.	99-05729-00	Tape, Carton Sealing	
PACKAGING INSTRUCTIONS (3700490-02)			
STEP	PROCEDURE		
1.	Follow General Guidelines (A-SP-3700349-0-0) for construction of foam pads. Use Mold Box (9906547-00) and Mold Insert (9906547-00).		
2.	Set up the Regular Slotted Carton (9906546-00) and seal the bottom using one strip (21 inches) of Carton Sealing Tape (9905729-00).		
3.	Place one Molded Foam Pad (9906547-00) on the end of the TUS58-FA and place in the Regular Slotted Carton so that the foam goes to the bottom of the Regular Slotted Carton. See Figure 3.		
4.	Wrap separately in one (1) foot pieces of Bubblewrap (9906200-00): One (1) Lalm TUS58, LA120 Hanger (7423504-00) and one (1) Lalm TUS58 Clamp (7423303-00). In a two (2) foot piece of Bubblewrap, wrap a Lalm Cable Assy (7017362-00).		
5.	Arrange the wrapped parts from step 4 along with two (2) Cartridge Tapes (TUS8K) and a Hardware Bag containing three (3) Pan Head Screws 10-32 x .82 LG (9908008-01), three (3) Lock Washer No. 10 (9907906-00) and three (3) No. 10 Flat Washer (9906664-00) into the One Piece Folder (9906663-00) and seal using a 14 inch strip of Carton Sealing Tape.		
6.	Place the One Piece Folder containing the additional parts into the Regular Slotted Carton as shown in Figure 3.		
7.	Place the remaining Molded Foam Pad over the TUS58-FA and close the Regular Slotted Carton and seal using one (1) 21 inch strip of Carton Sealing Tape.		
8.	Palletize as per Figure 4 using four (4) Angle Board (9906185-14) and four (4) Strapping (9906734-02).		
ENG. <u>David Chalko</u>	APPD. <u>A.B. Peltier</u>	SIZE <u>A</u>	NUMBER <u>3700490-00</u> REV. <u>A</u>
SHEET <u>3</u> OF <u>7</u>			

PACKAGING INSTRUCTION		CONTINUATION SHEET	
TITLE: PKG PROCESSOR SB11, TUS8L, TUS58		REV. <u>A</u> DATE: <u>3/80</u>	
PARTS LIST 3700490-03			
QUANTITY	DWG/PART NUMBER	DESCRIPTION	
2	99-06547-00	Pad, Molded Foam	
1	99-06546-00	Carton, Regular Slotted	
4 ft.	99-06200-00	Bubblewrap, Antistatic, Pink	
4-1/2 ft.	99-05729-00	Tape, Carton Sealing	
PACKAGING INSTRUCTIONS (3700490-03)			
STEP	PROCEDURE		
1.	Follow General Guidelines (A-SP-3700349-0-0) for construction of foam pads. Use Mold Box (9906547-00) and Mold Insert (9906547-00).		
2.	Set up the Regular Slotted Carton (9906546-00) and seal the bottom using one strip (21 inches) of Carton Sealing Tape (9905729-00).		
3.	Place one Molded Foam Pad (9906547-00) on the end of the TUS8L and place in the Regular Slotted Carton so that the foam goes to the bottom of the Regular Slotted Carton. See Figure 3.		
4.	Wrap separately in one (1) foot pieces of Bubblewrap (9906200-00): One (1) Lalm TUS8L, LA120 Hanger (7423504-00) and one (1) Lalm TUS8L Clamp (7423303-00). In a two (2) foot piece of Bubblewrap, wrap a Lalm Cable Assy (7017362-00).		
5.	Arrange the wrapped parts from step 4 along with two (2) Cartridge Tapes (TUS8K) and a Hardware Bag containing three (3) Pan Head Screws 10-32 x .82 LG (9908008-01), three (3) Lock Washer No. 10 (9907906-00) and three (3) No. 10 Flat Washer (9906664-00) into the One Piece Folder (9906663-00) and seal using a 14 inch strip of Carton Sealing Tape.		
6.	Place the One Piece Folder containing the additional parts into the Regular Slotted Carton as shown in Figure 3.		
7.	Place the remaining Molded Foam Pad over the TUS8L and close the Regular Slotted Carton and seal using one (1) 21 inch strip of Carton Sealing Tape.		
8.	Palletize as per Figure 4 using four (4) Angle Board (9906185-14) and four (4) Strapping (9906734-02).		
ENG. <u>David Chalko</u>	APPD. <u>A.B. Peltier</u>	SIZE <u>A</u>	NUMBER <u>3700490-00</u> REV. <u>A</u>
SHEET <u>4</u> OF <u>7</u>			

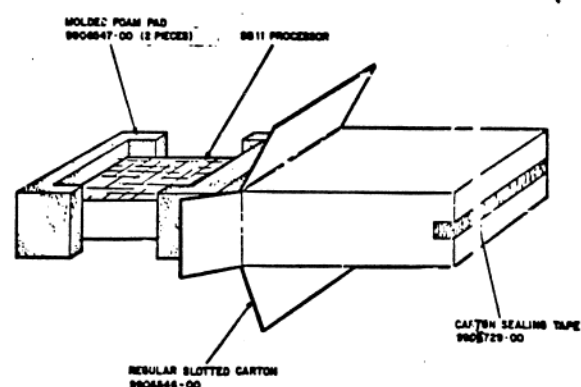


FIGURE 1
3700490-00

	PACKAGING DIMENSIONS & WEIGHTS	
	USA	METRIC
WEIGHT	13 lb	5.9 MLC
LENGTH	18 in.	457.2 mm
WIDTH	10 in.	255.6 mm
HEIGHT	20 in.	504.8 mm
CUBE	2.1 cu ft	06 cu m
DENSITY	3 lbs/cu ft	100.3 kg/cu m

PACKAGING INSTRUCTION REV: A DATE: 3/80

TITLE: PKG PROCESSOR 8811, TUB8L, TUB86

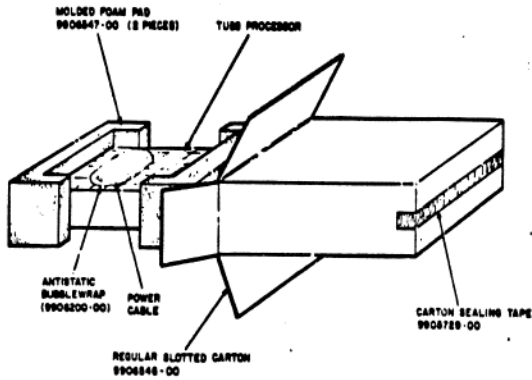


FIGURE 2
3700490-01

PACKAGED DIMENSIONS & WEIGHTS	
USA	METRIC
WEIGHT	13 lb 8.9 NLD
LENGTH	18 in 457.2 mm
WIDTH	10 in 255.6 mm
HEIGHT	20 in 504.8 mm
CUBE	2.1 cu ft 59.3 cu dm
DENSITY	6.3 lbs/cu ft 100.3 kg/cu m

NOTE: Make changes in "Q" and original only and renumber.

ENGR: <u>A. R. R. 11/10/79</u>	APPD: <u>A. R. R. 11/10/79</u>	CHK: <u>4/79</u>	SIZE: <u>A</u>	CODE: <u>UP</u>	NUMBER: <u>3700490-0-0</u>	REV: <u>A</u>
--------------------------------	--------------------------------	------------------	----------------	-----------------	----------------------------	---------------

PACKAGING INSTRUCTION REV: A DATE: 3/80

TITLE: PKG PROCESSOR 8811, TUB8, TUB86

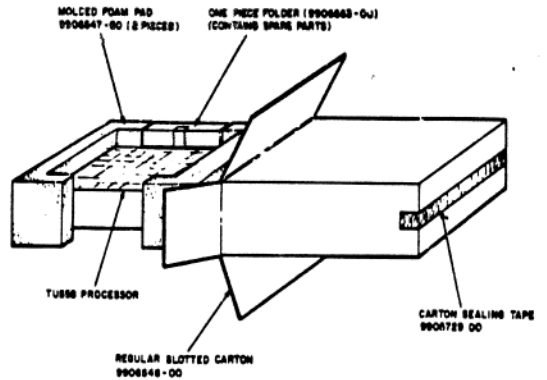


FIGURE 3
3700490-02

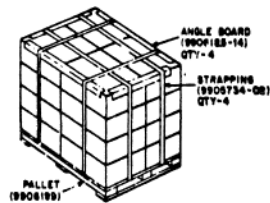
PACKAGED DIMENSIONS & WEIGHTS	
USA	METRIC
WEIGHT	15.5 lb 7.0 NLD
LENGTH	18 in 457.2 mm
WIDTH	10 in 255.6 mm
HEIGHT	20 in 504.8 mm
CUBE	2.1 cu ft 59.3 cu dm
DENSITY	6.3 lbs/cu ft 100.3 kg/cu m

NOTE: Make changes in "Q" and original only and renumber.

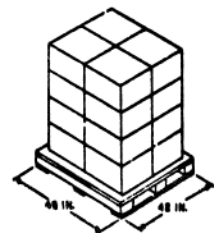
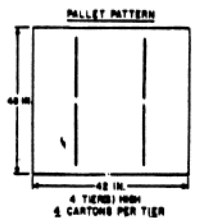
ENGR: <u>A. R. R. 11/10/79</u>	APPD: <u>A. R. R. 11/10/79</u>	CHK: <u>4/79</u>	SIZE: <u>A</u>	CODE: <u>UP</u>	NUMBER: <u>3700490-0-0</u>	REV: <u>A</u>
--------------------------------	--------------------------------	------------------	----------------	-----------------	----------------------------	---------------

PACKAGING INSTRUCTION REV: A DATE: 3/80

TITLE: PKG PROCESSOR 8811, TUB8, TUB8L, TUB86



STRAPPING DETAIL



LOAD DETAIL

FIGURE 4
3700490-00
3700490-01
3700490-02

PACKAGED DIMENSIONS & WEIGHTS	
USA	METRIC
WEIGHT	268 lb 117.03 NLD
LENGTH	48 in 1219 mm
WIDTH	42 in 1067 mm
HEIGHT	48 in 1219 mm
CUBE	11.3 cu ft 320.8 cu dm
DENSITY	8.03 lbs/cu ft 130.88 kg/cu m

NOTE: Make changes in "Q" and original only and renumber.

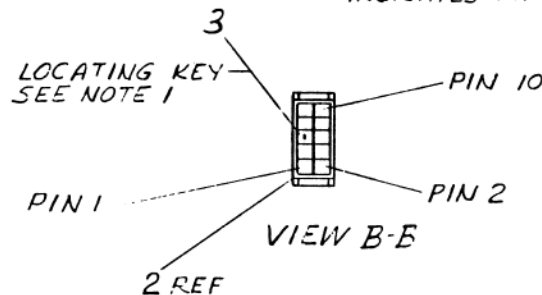
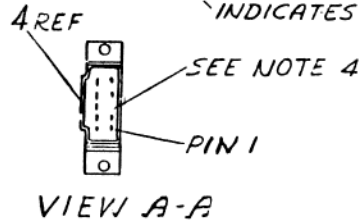
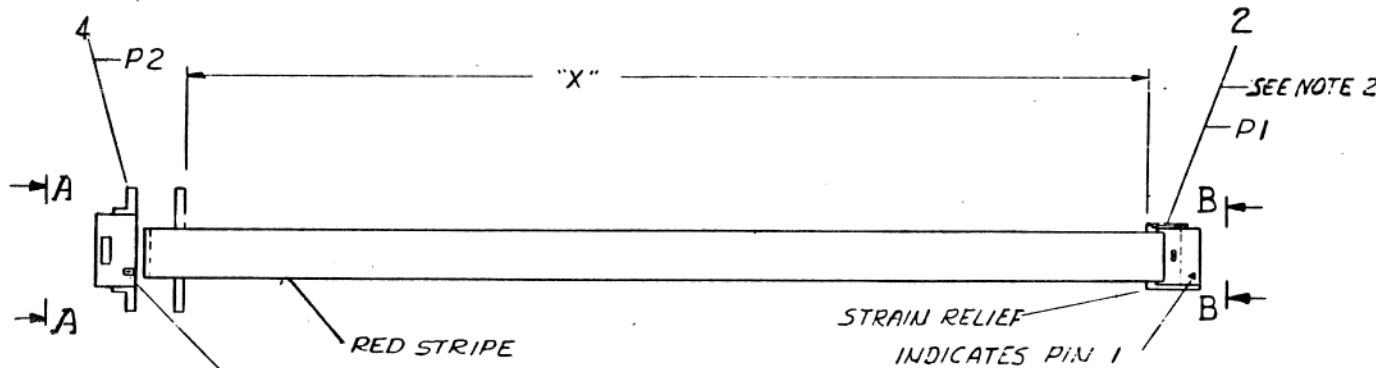
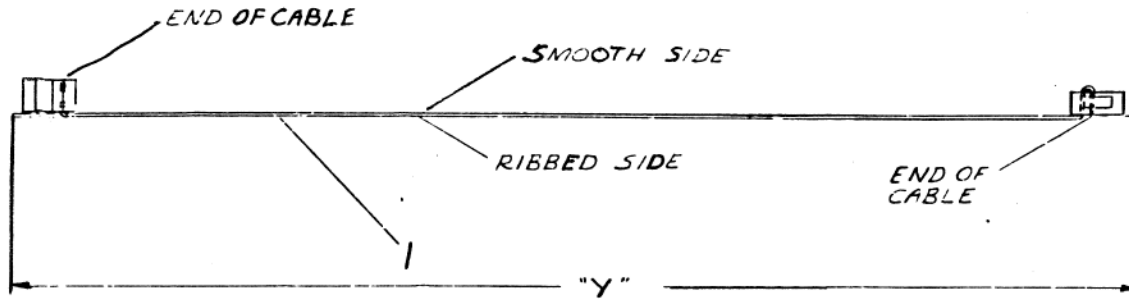
ENGR: <u>A. R. R. 11/10/79</u>	APPD: <u>A. R. R. 11/10/79</u>	CHK: <u>4/79</u>	SIZE: <u>A</u>	CODE: <u>UP</u>	NUMBER: <u>3700490-0-0</u>	REV: <u>A</u>
--------------------------------	--------------------------------	------------------	----------------	-----------------	----------------------------	---------------

THIS DRAWING AND SPECIFICATIONS HEREIN ARE THE PROPERTY OF DIGITAL EQUIPMENT CORPORATION AND SHALL NOT BE REPRODUCED OR COPIED OR USED IN WHOLE OR IN PART AS THE BASIS FOR THE MANUFACTURE OR SALE OF ITEMS WITHOUT WRITTEN PERMISSION. COPYRIGHT © 1974 DIGITAL EQUIPMENT CORPORATION

NUMBER	DIM 'X' VARIATION	DIM 'Y' (PRECUT)
7016305-03	3 FT ± 1.0 IN	3 FT. 3 IN

NOTES

1. INSERT KEY IN #5 CONNECTOR PIN HOLE AND BREAK OFF TAB
2. USE CRIMP PRESS 3M # 3440 OR #3445 AND LOCATER GUIDE 3M #3443-9 TO CRIMP ITEM #2.
3. USE AMP. LATCH PIN TOOLING ASSY #91140-2 WITH MANUAL UNIT #91085-2 OR PNEU. UNIT #91112-2 TO ATTACH ITEM #4 TO CABLE.
4. REMOVE PIN'S FROM CONNECTOR ITEM #4 BEFORE ASSEMBLY WITH CABLE.



1	CONNECTOR, CRIMP	1213039-02	4
1	KEY	9009707-00	3
1	CONNECTOR, CRIMP	1211206-02	2
1	CABLE, 10 CONDUCTOR	9107747-02	1

DESCRIPTION		DWG./PART NO.	ITEM NO.				
UNLESS OTHERWISE SPECIFIED DIMENSIONS ARE IN INCHES							
ANGLES 10° 30'	CLASS OF ACCURACY (CHECK ONE)	NOMINAL DIMENSION RANGE INCHES					
		OVER 0 TO 0.2	OVER 0.2 TO 1.2	OVER 1.2 TO 4.0	OVER 4.0 TO 12.0	OVER 12.0 TO 40.0	OVER 40.0 TO 80.0
SURFACE QUALITY IN	MEDIUM	±.004	±.008	±.012	±.016	±.024	±.04
	PREFERRED	±.012	±.016	±.025	±.04	±.063	±.1

THIRD ANGLE PROJECTION	DRAWN	SKETCHED	FIRST USED ON	digital
REMOVE BURRS AND BREAK SHARP CORNERS	CHK'D	DATE	TU58	TITLE
DO NOT SCALE DWG	ENG. DRAWING	DATE	CABLE, SERIAL TU58	
MATERIAL	PROJ. ENG.	DATE		
SEE PARTS LIST	PROD. DATE	DATE		
FINISH	NEXT HIGHER ASSY.			
	E-UA-TU58-C-0	SIZE	CODE	NUMBER
	SCALE NONE	C	JA	7016305-00
	SHEET 1 OF 1	DIST.		

REVISIONS	CHG.	NO.	REV.

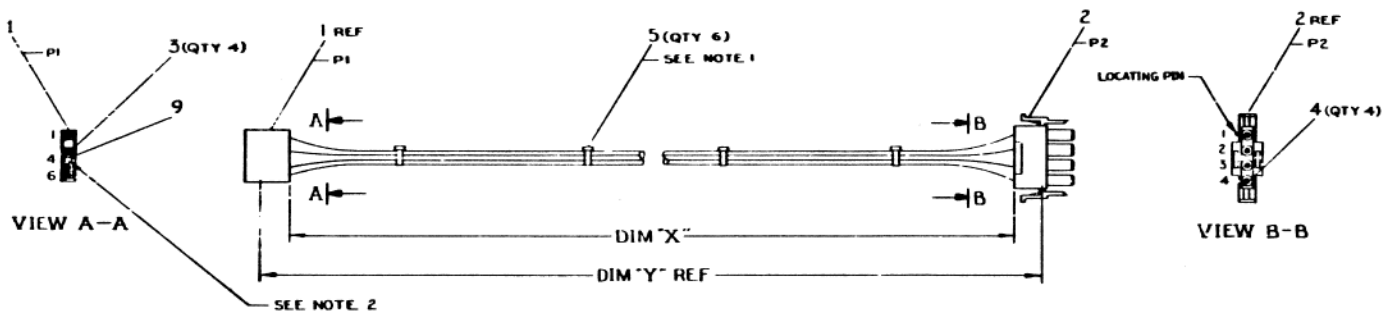
C/A 7016305-00

THIS DRAWING AND SPECIFICATION ARE THE PROPERTY OF THE U.S. GOVERNMENT AND ARE TO BE REPRODUCED AND TRANSMITTED IN ANY FORM AND BY ANY MEANS, ELECTRONIC OR MECHANICAL, INCLUDING PHOTOCOPYING, RECORDING, OR BY ANY INFORMATION STORAGE AND RETRIEVAL SYSTEM, WITHOUT PERMISSION IN WRITING FROM THE OFFICE OF THE SECRETARY OF THE AIR FORCE, WASHINGTON, D.C. 20330.

WIRE TABLE						
ITEM	DESCRIPTION	FROM	TO	REMARKS		
NO	AWG	COLOR	CONN	WITH	CONN	WITH
6	18	BLK	P1-1	1E-3	P2-1	2E-4
7	18	BLK	P1-5	1E-3	P2-2	2E-4
7	18	BLK	P1-6	1E-3	P2-3	2E-4
8	18	RED	P1-5	1E-3	P2-4	2E-4

LEGEND		
NUMBER	DIM 'X' VARIATION	DIM 'Y' (PRE-CUT) REF
7016527-02	2 FT - ± 1.0 IN	2 FT - 5 IN
7016527-01	1 FT - ± 1.0 IN	1 FT - 5 IN

NOTES:
 1. ATTACH CABLE TIE (ITEM 5) APPROXIMATELY EVERY 4" AS SHOWN.
 2. INSERT KEY PLUG (ITEM 9) INTO POSITION 4 FROM THIS END.

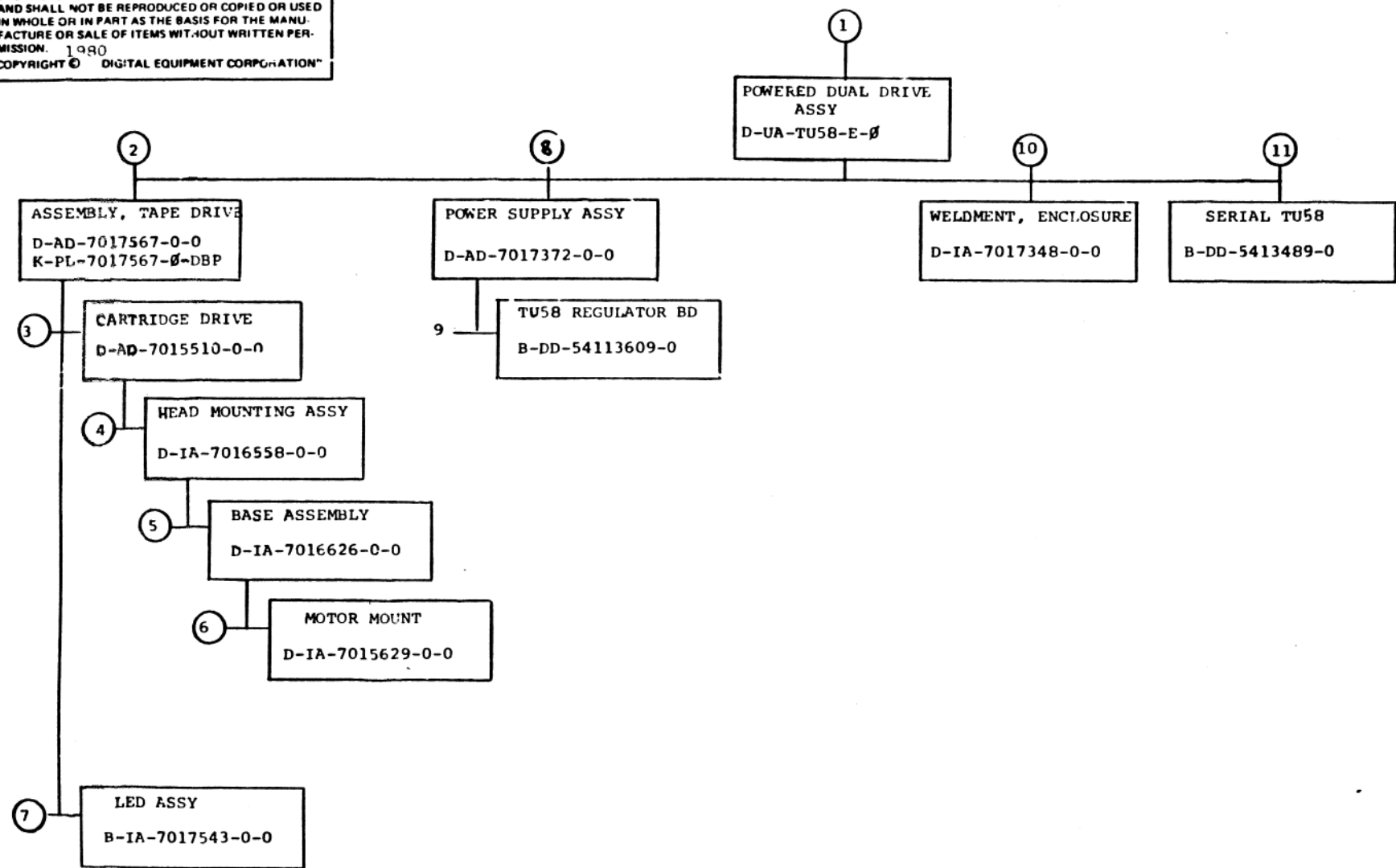


CAUTION OFF SHEETS PARTS LIST EXIST B - PL-7016527-0-0

REV. 1	CHANGED	DATE
REV. 2	REVISION	DATE

QUANTITY & VARIATION QUANTITY: [] VARIATION: []	CLASS OF ACCURACY SURFACE QUALITY: [] FINISH: []	TITLE CABLE, TU58 SUPPLY OUTPUT
PARTS LIST SCALE: 1/1	SHEET 1 OF 1	DIST

"THIS DRAWING AND SPECIFICATIONS, HEREIN, ARE THE PROPERTY OF DIGITAL EQUIPMENT CORPORATION AND SHALL NOT BE REPRODUCED OR COPIED OR USED IN WHOLE OR IN PART AS THE BASIS FOR THE MANUFACTURE OR SALE OF ITEMS WITHOUT WRITTEN PERMISSION. 1980
 COPYRIGHT © DIGITAL EQUIPMENT CORPORATION"



digital PARTS LIST			QUANTITY / VARIATION										NOTES:				
DRN. DATE	DES. ENG. DATE	MFG. ENG.	TU58-FA	TU58-EB	TU58-EC	TU58-ED											
<i>J. Lee</i> DATE <i>3/26/80</i>	<i>J. Lee</i> DATE <i>3/26/80</i>	<i>John A. Batts</i>															
CHK'D. DATE	RESP. ENG. DATE	NEXT HIGHER DOC.	REFERENCE DESIGNATORS														
ITEM NO.	DRAWING NO.	PART NO.	DESCRIPTION														
1	E-UA-TU58-E-0	TU58-EX	POWERED DUAL DRIVE ASSY														
2		1700083-09	POWER CORD 115V 6 A														
3	A-SP-3700490-0-0	3700490-09	PACKAGING INSTRUCTIONS (TU58)														
4	B-PL-7016753-0-0	7016753-00	INSTALLATION ASSY (KIT)														
5	K-PL-TU58-K-DBR	TU58-K	MEDIA CARTRIDGE, TU58-K														
6		MP01014	FIELD MAINT. PRINT SET (TU58-E)														
7		1700090-00	POWER CORD 250V 6A														
8		23765A9-00	BOOT CHIP														
9		9906228-00	SHIPPING BOX, ROM CHIP SET														
10		BC20Y-25	I/O CABLE														
11		BC20Z-25	I/O CABLE														
12		9007207-00	FUSE, 220V, .38A SLOW BLOW														
13	E-K-0TU58-UG-001	E-K-0TU58-UG	USERS GUIDE														
14	B-PL-TU58-E-2	TU58- ED	ACCESSORY KIT														
15	B-PL-TU58-E-2	TU58-ED	ACCESSORY KIT														
16	A-PS-3615946-0-0	3615946-00	VARIATION TAG														

PRELIMINARY

<small>*THIS DRAWING AND SPECIFICATIONS HEREIN ARE THE PROPERTY OF DIGITAL EQUIPMENT CORPORATION AND SHALL NOT BE REPRODUCED OR COPIED OR USED IN WHOLE OR IN PART AS THE BASIS FOR THE MANUFACTURE OR SALE OF ITEMS WITHOUT WRITTEN PERMISSION COPYRIGHT © 1980 DIGITAL EQUIPMENT CORPORATION*</small>			TITLE TU58-E SHIP LIST		ASSY. NO. TU58-EX		SIZE B		CODE PL		NUMBER TU58-E-2		REV. 	
			SECTION 1 OF 1								SHEET OF		B	