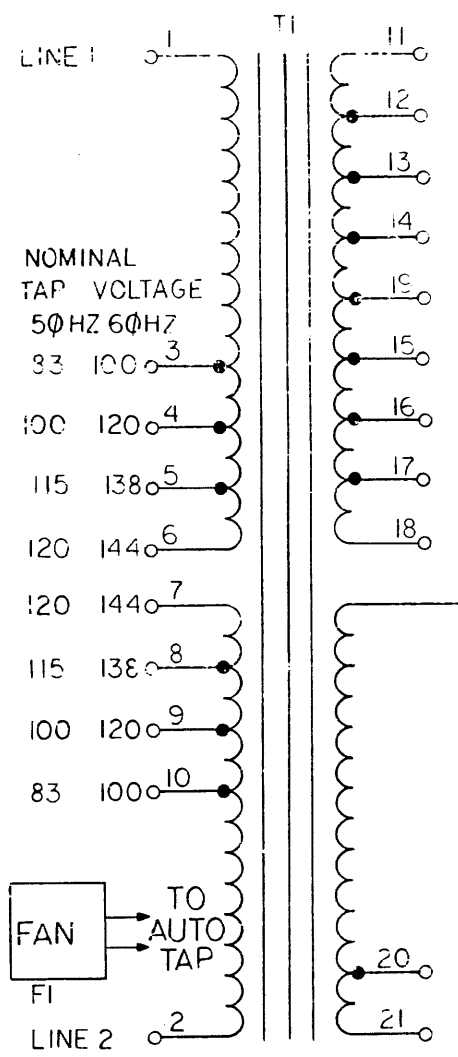
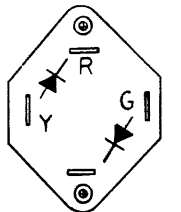
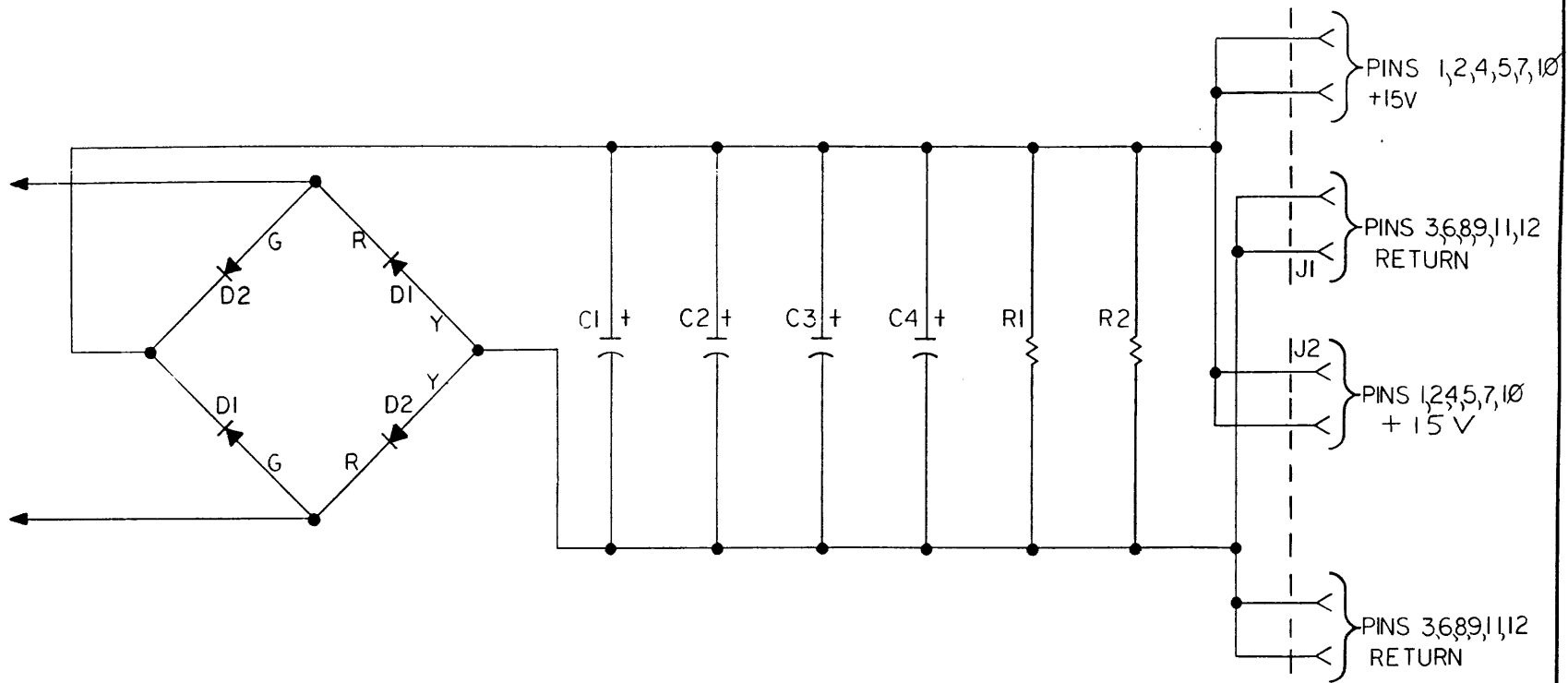


THIS SCHEMATIC IS FURNISHED ONLY FOR TEST AND MAINTENANCE PURPOSES. THE CIRCUITS ARE PROPRIETARY IN NATURE AND SHOULD BE TREATED ACCORDINGLY. COPYRIGHT © BY DIGITAL EQUIPMENT CORPORATION



NOMINAL INPUT VOLTAGE ±15%	JUMPER	LINE
100V 60 HZ	1-10, 2-3	1, 2
120V 60 HZ	1-9, 2-4	↑
240V 60 HZ	4-9	
100V 50 HZ	1-9, 2-4	
115V 50 HZ	1-8, 2-5	↓
200V 50 HZ	4-9	
220V 50 HZ	6-9	
240V 50 HZ	6-7	

	FREQUENCY ±1HZ	
	50 HZ	60 HZ
AUTOTAP 1% V ±1% AT NOMINAL 3 AMP	2, 7	2, 9
RECTIFIERS	12, 17	14, 15
6 μf CAP	21	20



REF	DESCRIPTION	PART NO
J1, J2	AMP MATE-N-LOCK	1209350-12
D1, D2	DIODE, DM15	1105799
REF	PARTS LIST H725	A-PL-H725-0-0
R1, R2	RES 15 Ω 25W	1300181
C5	6 μF 60V AC	FURNISHED W/TI
C1, C2, C3, C4	CAP 57,000 μF 50V	1004875
TI	TRANS	1610144
FI	FAN	1205033-01
REF DES	DESCRIPTION	PART NO

REVISIONS	CHK	CHG	NO.	REV.

DRN.	DATE

TRANSISTOR & DIODE CONVERSION CHART			
DEC	EIA	DEC	EIA

digital EQUIPMENT CORPORATION
MAYNARD, MASSACHUSETTS

TITLE: +15V 20A P.S. H725
NUMBER: H725-0-1
REV. 1

PRINTED CIRCUIT REV.

REV. 1
NUMBER H725-0-1
SIZE CODE C CS