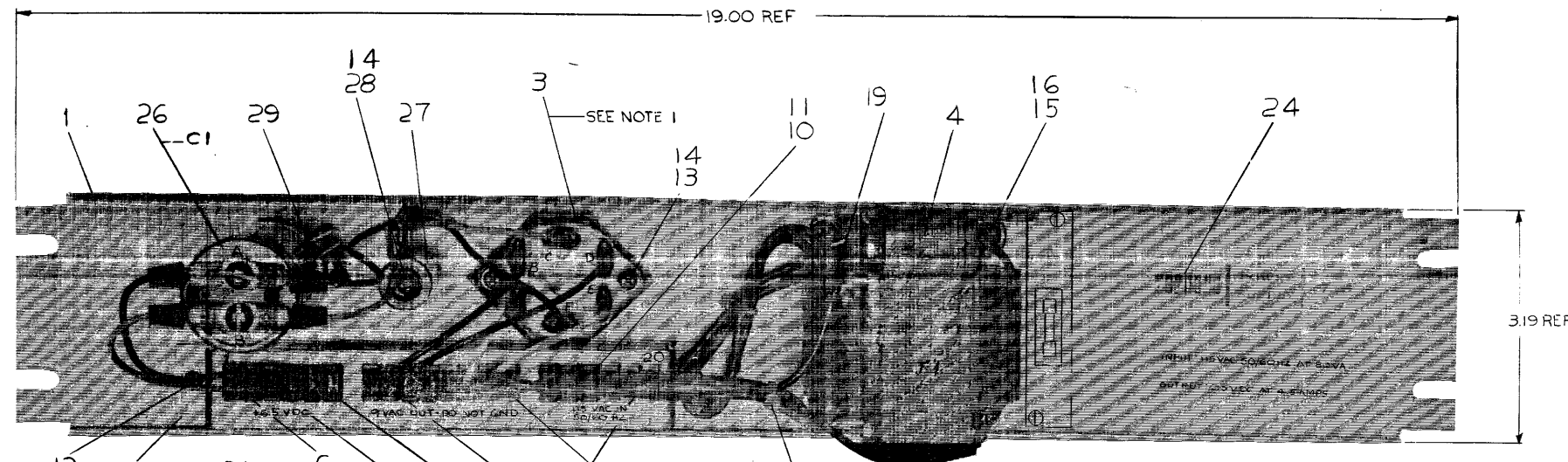
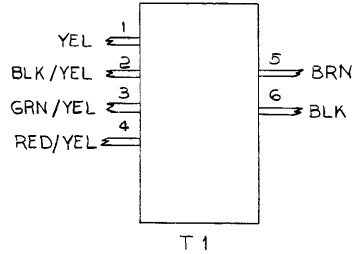
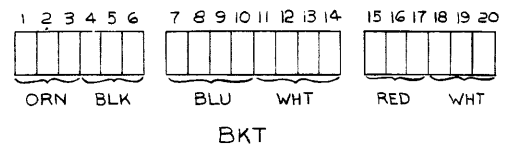
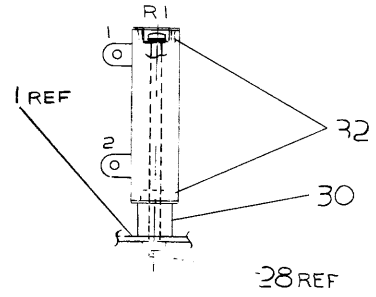
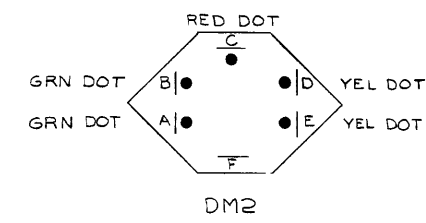


This drawing and specifications, herein, are the property of Digital Equipment Corporation and shall not be reproduced or copied or used in whole or in part as the basis for the manufacture or sale of items without written permission. 1974

WIRE TABLE

ITEM NO	DESCRIPTION	CONNECTIONS		EQUIP FROM WITH ITEMS	EQUIP TO WITH ITEMS	REMARKS
		FROM	TO			
-	YEL	T1-1	BKT-9	-	5	
-	RED/YEL	T1-4	BKT-14	-	5	
-	BRN	T1-5	F1	-	5	SOLDER F1
-	BLK	T1-6	BKT-17	-	5	
20	*14 WHT	DM2-A	BKT-12	5	5	
21	*14 BLU	DM2-B	BKT-7	5	5	
22	*14 ORN	DM2-C	R1-1	5	-	SOLDER R1-1
21	*14 BLU	DM2-D	BKT-8	5	5	
20	*14 WHT	DM2-E	BKT-13	5	5	
23	*14 BLK	DM2-F	R1-2	5	-	SOLDER R1-1
18	*22 -	BKT-1	BKT-3	-	-	1 THRU 3
18	*22 -	BKT-4	BKT-6	-	-	4 THRU 6
18	*22 -	BKT-7	BKT-10	-	-	7 THRU 10
18	*22 -	BKT-11	BKT-14	-	-	11 THRU 14
18	*22 -	BKT-15	BKT-17	-	-	15 THRU 17
18	*22 -	BKT-18	BKT-20	-	-	18 THRU 20
-	GRN/YEL	T1-3	-	-	19	TIE END
-	BLU/YEL	T1-2	-	-	19	TIE END
22	*14 ORN	R1-1	C1-A	-	31	SOLDER R1-1
22	*14 ORN	C1-A	BKT-3	31	5	
23	*14 BLK	R1-2	C1-B	-	31	SOLDER R1-2
23	*14 BLK	C1-B	BKT-4	31	5	
-	*14 BRN	F1	BKT-20	-	5	

NOTES
 1. APPLY THERMAL COMPOUND ITEM #25 #340 DOW CORNING OR EQUIV TO CONTACTING SURFACES OF ITEM #1 & ITEM #3.



TOLERANCES
 DECIMALS
 .XXX ± .005
 .XX ± .02
 .X ± .1

FIRST USED ON OPT/MOD RF09	QTY.	DESCRIPTION	PART NO.	ITEM NO.
PARTS LIST				
UNLESS OTHERWISE SPECIFIED	DRN. ROBICHAUD	DATE 6-5-69	digital EQUIPMENT CORPORATION MAYNARD, MASSACHUSETTS	
UNLESS OTHERWISE SPECIFIED	CHK'D. D. HEALY	DATE 6-10-69	TITLE	
	ENG. ZNAMIEROWSKI	DATE 6-10-69	INDICATOR	
	PROJ. ENG. D. VONADA	DATE 6-10-69	POWER SUPPLY 716	
	PROD. ANTONUCCIO	DATE 6-12-69		
MATERIAL	FIRST USED ON		SIZE CODE	NUMBER
FINISH	D-UA-RF09-0-0		DUA	716-0-0
	SCALE 1/1	SHEET 1 OF 1	DIST.	REV. F

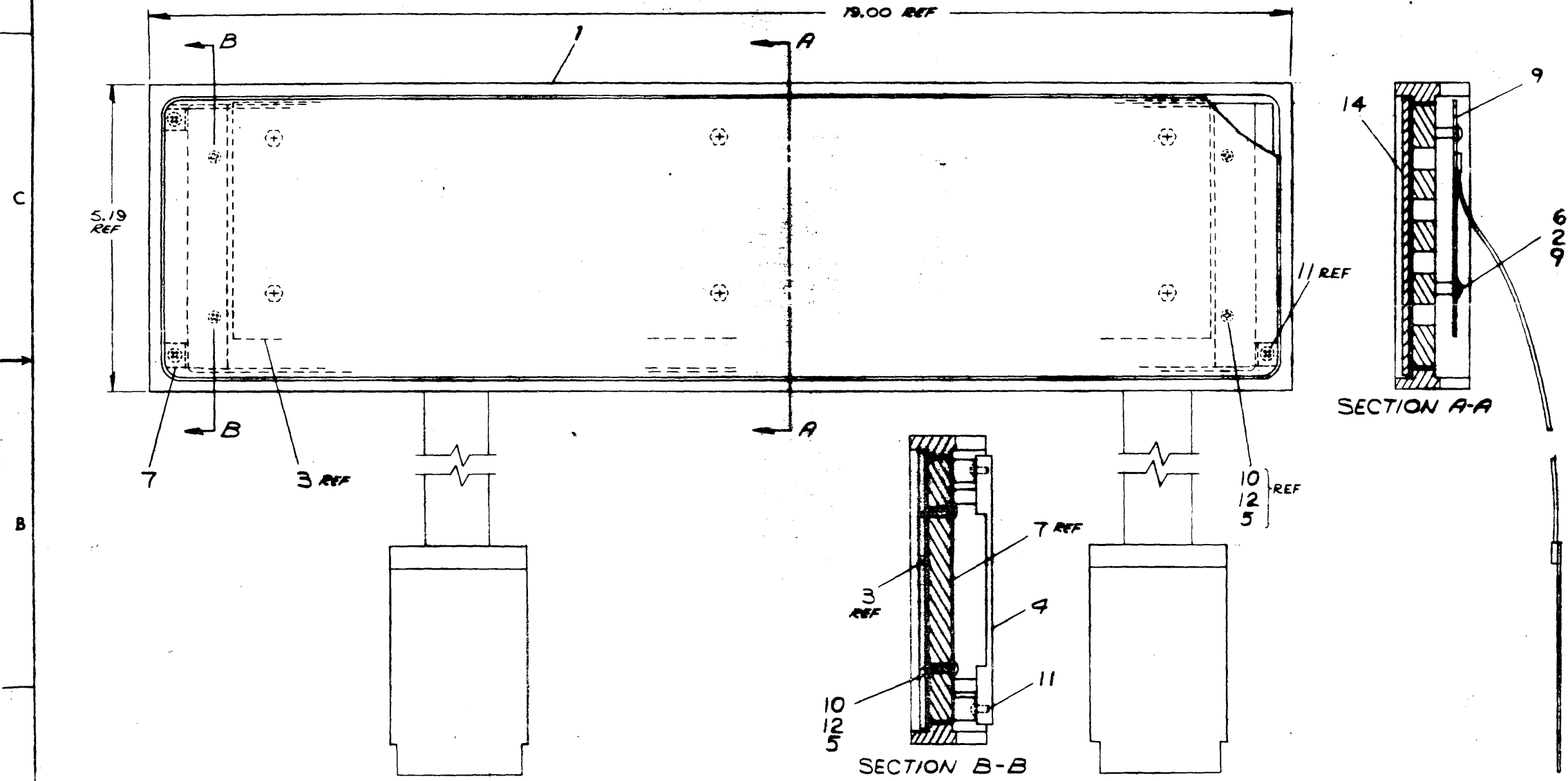
REVISIONS

CHK	CHANGE NO.	REV.
D	716-00001	A
REDRAWN & REVISED		
D	716-00004	B
D. VONADA 11-19-69		
D	716-00005	C
D. VONADA 3-25-70		
D	716-00006	D
D. VONADA 5-1-70		
D	716-00007	E
D. VONADA 9-2-70		
D	716-00008	F
D. VONADA 5-16-74		

1972

NUMBER	ASSY NO
7006331-1	D-UP-RF09-0-0
7006331-2	D-UP-V718-0-0
7006331-3	D-UP-V715-0-0
7006331-4	D-UP-RF08-0-0
7006331-5	D-UP-R663-0-0
7006331-6	NOT USED
7006331-7	NOT USED
7006331-8	D-UP-H963-F-0
7006331-9	D-UP-NP02-0-0
7006331-10	D-UP-R663-M-0
7006331-11	D-UP-RP15-0-0
7006331-12	D-UP-RP15-0-0
7006331-13	D-UP-RF11-0-0
7006331-14	D-UP-DX38-0-0
7006331-15	D-UP-BD15-0-0
7006331-16	D-UP-RP11-0-0
7006331-17	D-UP-7603960-0-0
7006331-18	D-UP-DA26-0-0
7006331-19	D-UP-7605907-0-0
7006331-20	NOT USED
7006331-21	D-UP-7605956-0-0
7006331-22	D-UP-7605957-0-0
7006331-23	D-UP-7605955-0-0
7006331-24	D-UP-DA28-0-0
7006331-25	D-UP-DA28-0-0
7006331-26	A-NL-760612-0
7006331-27	D-UP-DX11-B
7006331-28	D-UP-TC10-C
7006331-29	D-UP-DX32-0-0
7006331-30	D-UP-RF10-0-0
7006331-31	D-UP-RF10-0-0
7006331-32	D-UP-RF11-0-0

NOTES:
 1 REMOVE ENERGY DIRECTORS (PLASTIC PROTRUSIONS) FROM BEZEL (ITEM 1) BY SCRAPING WITH PAINT SCRAPER.
 2 SECURE INLAY (ITEM 13) TO BEZEL (ITEM 1) WITH STRUCTURAL ADHESIVE (ITEM 8) USING EQUAL PARTS OF 2216A & 2216B. CARE MUST BE TAKEN NOT TO ALLOW ADHESIVE TO SHOW ON FRONT SIDE OF INDICATOR PANEL.



REV	DATE	BY	CHKD
1	10-30-74	N ROY	
2	11-15-74	N ROY	
3	12-10-74	N ROY	
4	1-12-74	N ROY	
5	3-1-74	N ROY	
6	9-3-74	N ROY	
7	9-12-74	N ROY	

QTY.	DESCRIPTION	PART NO.	FROM NO.
	PARTS LIST		
	1	INDICATOR PANEL ASSY	
	2	BEZEL	
	3	INLAY	
	4	ENERGY DIRECTOR	
	5	STRUCTURAL ADHESIVE	
	6	PAINT SCRAPER	
	7	STRUCTURAL ADHESIVE	
	8	STRUCTURAL ADHESIVE	
	9	ENERGY DIRECTOR	
	10	ENERGY DIRECTOR	
	11	ENERGY DIRECTOR	
	12	ENERGY DIRECTOR	
	13	INLAY	
	14	BEZEL	
	15	BEZEL	

EQUIPMENT CORPORATION
 TITLE: INDICATOR PANEL ASSY
 PART NO: 0-0-125900210-2
 SCALE: 1/1
 SHEET: 1 OF 1