

THIS DRAWING AND SPECIFICATIONS HEREIN ARE THE PROPERTY OF DIGITAL EQUIPMENT CORPORATION AND SHALL NOT BE REPRODUCED OR COPIED OR USED IN WHOLE OR IN PART AS THE BASIS FOR THE MANUFACTURE OR SALE OF ITEMS WITHOUT WRITTEN PERMISSION. COPYRIGHT © 1977, DIGITAL EQUIPMENT CORPORATION.

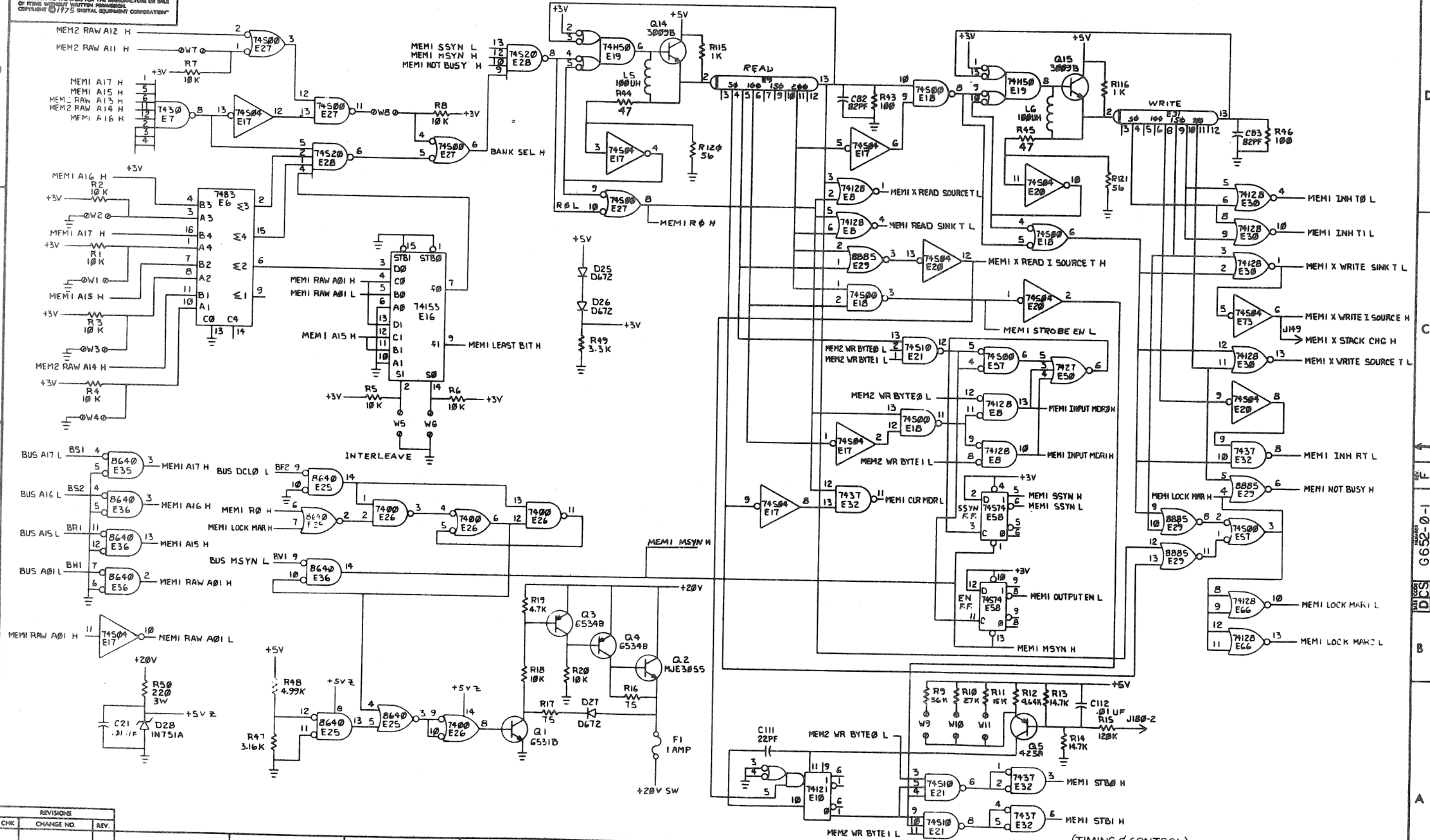
QTY	REF	DESIGNATIONS	DESCRIPTION	PART NO.	ITEM NO.
			ASSY/DRILLING HOLE LAYOUT	D-AH-6652-8-5	1
			MODULE ECO HISTORY "	B-MH-6652-8-6	2
1	1		ETCHED CIRCUIT BOARD	5011482	3
2	2	C82, C83	CAPACITOR, 82 pf, 100V, 5%, DM	1000015-00	4
1	1	C111	CAPACITOR, 22 pf, 100V, 5%, DM	1005820-00	5
22	22	C16 THRU C18, C84, C87, C90, C93, C96, C99, C102, C105, C108, C113 THRU C121	CAPACITOR, 120 pf, 100V, 5%, DM	1000010-00	6
15	15	C52 THRU C59	CAPACITOR, 5500 pf, 50V, 10%, CER	1011740-00	7
4	4	C36 THRU C41	CAPACITOR, 47 uf, 30V, AL EL	1012219-00	8
60	60	C1 THRU C15, C20, C21, C42 THRU C51, C70 THRU C81, C86, C88, C89, C91, C92, C94, C95, C97, C98, C100, C101, C103, C104, C106, C107, C85, C109, C110, C112, C132, C133	CAPACITOR, .01 uf, 50V, 20%, CER	1001610-00	9
16	16	C22 THRU C37	CAPACITOR, .22 uf, 50V +80%, -20%, CER	1010274-00	10
9	9	C123 THRU C131	CAPACITOR, 6 uf, 25V, AL EL	1012084-01	11
1	1	D26	DIODE ZENER IN751A 5.1V, 5%	1110994-00	12
9	9	D109, D111, D113, D115, D117, D119, D121, D123, D125	DIODE PACK COMMON CATHODE	7010918-0-0	13
9	9	D108, D110, D112, D114, D116, D118, D120, D122, D124	DIODE PACK COMMON ANODE	7010918-0-1	14
9	9	D128 THRU D134	DIODE PACK COMMON CATHODE	7010918-0-2	15
105	105	D1 THRU D27, D29 THRU D104, D107, D135	DIODE D872	1105275-00	16
1	1	D106	DIODE ZENER IN756A, 8.2V, 1%	1103441-01	17
1	1	D105	DIODE ZENER IN4742, 12V, 10%, 1W	1109502-00	18
18	18	R51 THRU R68	RESISTOR, 21, 3W, 1% WW	1311730-01	19
2	2	R18, R17	RESISTOR, 75, 1/4W, 5%	1302379-00	20
6	6	R25, R30, R35, R40, R43, R46	RESISTOR, 100, 1/4W, 5%	1300229-00	21
1	1	R90	RESISTOR, 220, 3W, 1%, WW	1312123-00	22
24	24	R23, R28, R33, R36, R67, R68, R91 THRU R94, R97 THRU R100, R103 THRU R106, R108 THRU R112, R115, R116	RESISTOR, 1K, 1/4W, 5%	1300365-00	23
1	1	R114	RESISTOR, 1.56K, 1/4W, 1%	1304833-00	24
1	1	R47	RESISTOR, 3.18K, 1/8W, 1%	1303045-00	25
1	1	R49	RESISTOR, 3.3K, 1/4W, 5%	1300439-00	26
1	1	R19	RESISTOR, 4.7K, 1/4W, 5%	1300447-00	27
1	1	R46	RESISTOR, 4.99K, 1/8W, 1%	1305324-00	28
9	9	R69, R66, R95, R98, R101, R102, R107, R108, R113	RESISTOR, 9.09K, 1/8W, 1%	1304855-00	29
16	16	R1 THRU R8, R10, R20, R21, R22, R24, R29, R34, R39	RESISTOR, 10K, 1/4W, 5%	1300479-00	30
2	2	R15, R14	RESISTOR, 14.7K, 1/8W, 1%	1302941-00	31
1	1	R10	RESISTOR, 27K, 1/4W, 5%	1306846-00	32
1	1	R9	RESISTOR, 56K, 1/4W, 5%	1302395-00	33
1	1	R15	RESISTOR, 120K, 1/4W, 5%	1300539-00	34
1	1	R11	RESISTOR, 15K, 1/4W, 5%	1300496-00	35
15	15	R69 THRU R88	RESISTOR, 150, 1/4W, 5%	1300250-00	36
3	3	R45, R44, R115	RESISTOR, 47, 1/4W, 5%	1300202-00	37
2	2	R120, R121	RESISTOR, 56, 1/4W, 5%	1302602-00	38
1	1	R21	RESISTOR, 13, 1W, 1% WW	1312466-03	39
4	4	R198	RESISTOR, 750, 1/4W, 5%	1301401-00	40
1	1	R42	RESISTOR, 30, 1/4W, 5%	1302751-00	41
1	1	R12	RESISTOR, 4.64V, 1/8W, 1%	1304652-00	42
1	1	R20	RESISTOR, 11, 1W WW	1312486-01	43
1	1	R38	RESISTOR, 12, 1W WW	1312486-02	44
9	9	R122 THRU R130	RESISTOR PACK, 100, 1/8W, 1%	1311741-00	45
1	1	F1	FUSE, PICO 1 AMPERE	1210829-02	46
1	1	F2	FUSE, PICO 5 AMPERE	1205747-00	47

QTY	REF	DESIGNATIONS	DESCRIPTION	PART NO.	ITEM NO.
179	179	J1 THRU J179	RECEPTACLE, SINGLE	1211726-00	48
1	1	J180	CONNECTOR, 7 PIN	1212104-00	49
2	2	Q14, Q15	TRANSISTOR, 3009B	1503100-00	50
2	2	Q3, Q4	TRANSISTOR, 8534B	1503409-01	51
5	5	Q5, Q10 THRU Q13	TRANSISTOR, 425B	1505321-00	52
1	1	Q1	TRANSISTOR, 8531B	1500330-00	53
4	4	Q8 THRU Q9	TRANSISTOR, 3782	1509849-01	54
1	1	Q2	TRANSISTOR, NJE 3055	1510555-00	55
18	18	T1 THRU T18	TRANSFORMER, INHIBIT DUAL	1812116-00	56
2	2	L3, L4	INDUCTOR, 0.47 uh, 10%	1810989-00	57
2	2	L5, L8	INDUCTOR, 100 uh	1810682-00	58
2	2	E9, E31	DELAY LINE, 250 NS	1811243-00	59
2	2	E28, E37	I.C. DEC 7400	1809575-00	60
1	1	E78	I.C. DEC 7408	1810741-00	61
1	1	E50	I.C. DEC 7427	1810078-00	62
1	1	E7	I.C. DEC 7430	1805578-00	63
2	2	E32, E85	I.C. DEC 7437	1810001-00	64
5	5	E49, E84, E82, E88, E97	I.C. DEC 7442	1810046-00	65
4	4	E39 THRU E42	I.C. DEC 7475	1809050-00	66
1	1	E8	I.C. DEC 7483	1809932-00	67
1	1	E10	I.C. DEC 74121	1810230-00	68
3	3	E6, E30, E86	I.C. DEC 74128	1812088-00	69
1	1	E18	I.C. DEC 74153	1809937-00	70
1	1	E72	I.C. DEC 74157	1810855-00	71
1	1	E19	I.C. DEC 74H50	1809080-00	72
3	3	E18, E27, E57	I.C. DEC 74500	1810532-00	73
5	5	E3, E4, E13, E14, E23	I.C. DEC 74503	1810533-00	74
6	6	E5, E15, E17, E20, E24, E73	I.C. DEC 74504	1810534-00	75
1	1	E21	I.C. DEC 74510	1810536-00	76
1	1	E28	I.C. DEC 74520	1810539-00	77
1	1	E56	I.C. DEC 74574	1810544-00	78
18	18	E45, E48, E53, E54, E61, E82, E89, E70, E79, E80, E85, E88, E94, E95, E101, E102, E110, E111	I.C. DEC 7520	1811748-00	79
38	38	E43, E44, E47, E48, E51, E52, E55, E58, E59, E60, E63, E67, E88, E71, E74, E75, E77, E78, E81, E83, E84, E87, E89 THRU E93, E98, E99 THRU E100, E103 THRU E109	I.C. DEC 75325	1810980-00	80
5	5	E25, E33 THRU E36	I.C. DEC 8840	1811469-00	81
6	6	E1, E2, E11, E12, E22, E38	I.C. DEC 8841	1811579-00	82
1	1	E29	I.C. DEC 8885	1810649-00	83
1	1		HANDLE	1210711-02	84
12	12		EYELET (HANDLE)	9006732-00	85
22	22		EYELET (SPLIT LUGS)	9006735-00	86
4	4	(USE WITH Q8 THRU Q9)	HEAT SINK, RED	1210001-00	87
4	4	(USE WITH Q8 THRU Q9)	TRANSIPAD	9007201-00	88
1	1		SCREW PPH #4-40 x 3/8	9008011-01	89
54	54		DIODE ASSEMBLY SPACER	9107771-00	90
1	1		NUT, KEP #4-40	9006557-00	91
		(SEE NOTES AND CHART SHEET #1)	WIRE, #22 AWG (SOLID)	9007580-01	92
1	1		SPACER, THD, ROUND #4-40 X 3/8	9006968-00	93
1	1		SCREW, NYLON, BINDER #4-40 X 3/8	9006401-34	94
1	1	R116	RESISTOR 750 1/4W 5%	1301401-00	95
1	1	R118	RESISTOR 22 1/4W 5%	1301969-00	96
A/R	-		WIRE #30AWG GRN	9105740-55	97
1	1	R41	RESISTOR 11, 1W, 1%	1312466-01	98
1	1	R41	RESISTOR 12, 1W, 1%	1312466-02	99

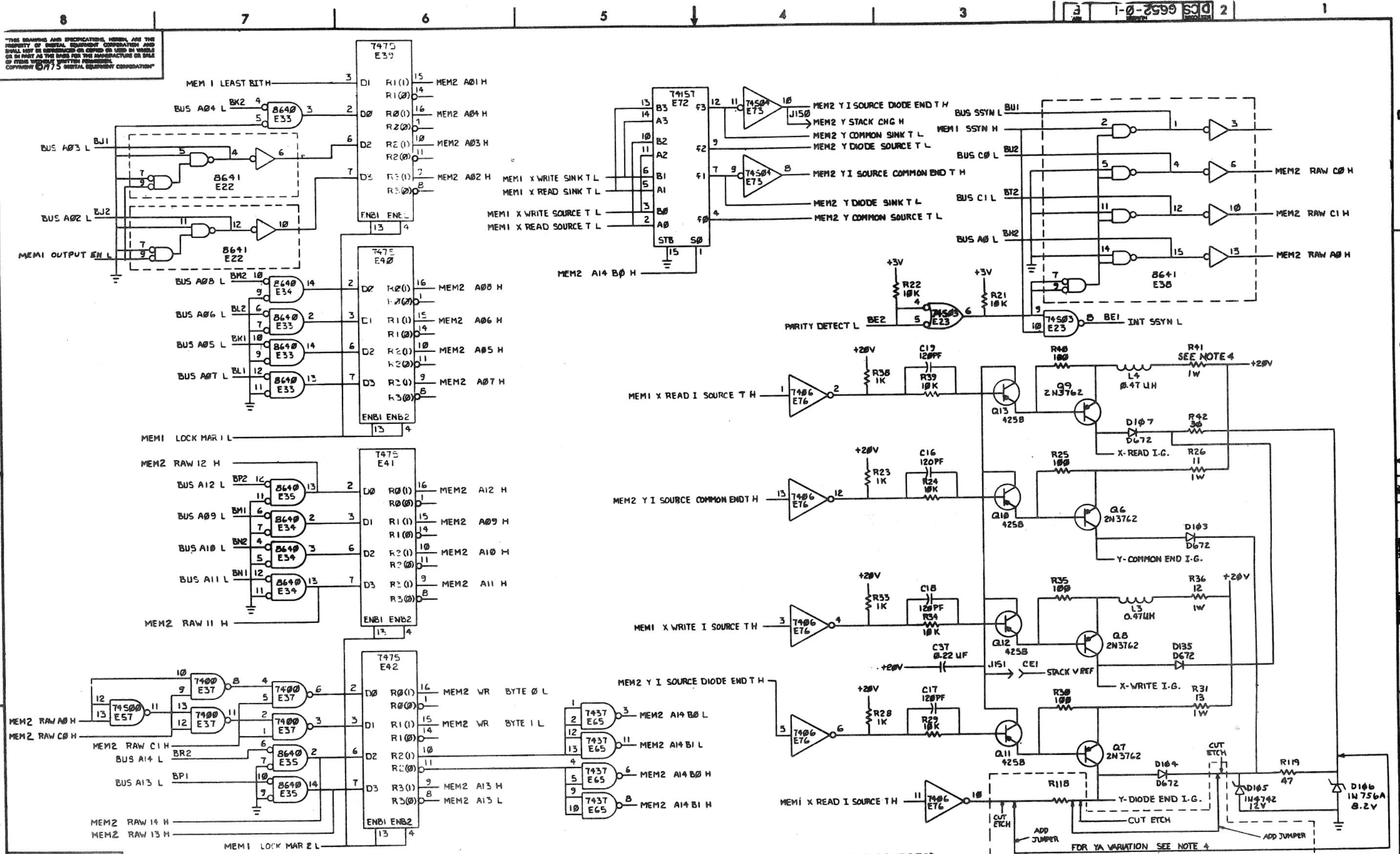
NOTES:
 4 G652-YA VARIATION:
 ETCH CUT #1 SIDE 1 BETWEEN BOTTOM OF R118 AND FEEDTHRU.
 ETCH CUT #2 SIDE 2 BETWEEN TOP OF R118 AND E76 PIN 10.
 ETCH CUT #3 SIDE 2 BETWEEN CATHODE OF D104 AND CATHODE OF D105.
 COMPONENT CHANGE, RESISTOR, R118 CHANGED FROM 750R TO 22Ω 1/4W 5%
 RESISTOR, R41 CHANGED FROM 11R TO 12Ω 1W, 1%
 JUMPER #1 FROM CATHODE OF D104 TO BOTTOM OF R118
 JUMPER #2 FROM CATHODE OF D106 TO TOP OF R118
 JUMPER WIRE PART # 30AWG GRY 9105740-55
 5 G652-YA WILL NOT OPERATE WITH H222-A'S & B'S
 G652 WILL NOT OPERATE WITH H222-YA'S & YB'S

TITLE	16K X 18 MEMORY ELECTRONICS	SIZE/SCALE	DCS	NUMBER	G652-0-1	REV.	F
SCALE	#	SHEET	2	OF	11	DIST.	

THIS DRAWING AND SPECIFICATIONS HEREBY ARE THE PROPERTY OF DIGITAL EQUIPMENT CORPORATION AND SHALL NOT BE REPRODUCED OR COPIED OR USED IN WHOLE OR IN PART AS THE BASIS FOR THE MANUFACTURE OR SALE OF ITEMS WITHOUT WRITTEN PERMISSION. COPYRIGHT © 1975 DIGITAL EQUIPMENT CORPORATION



REVISIONS		
CHK	CHANGE NO.	REV.

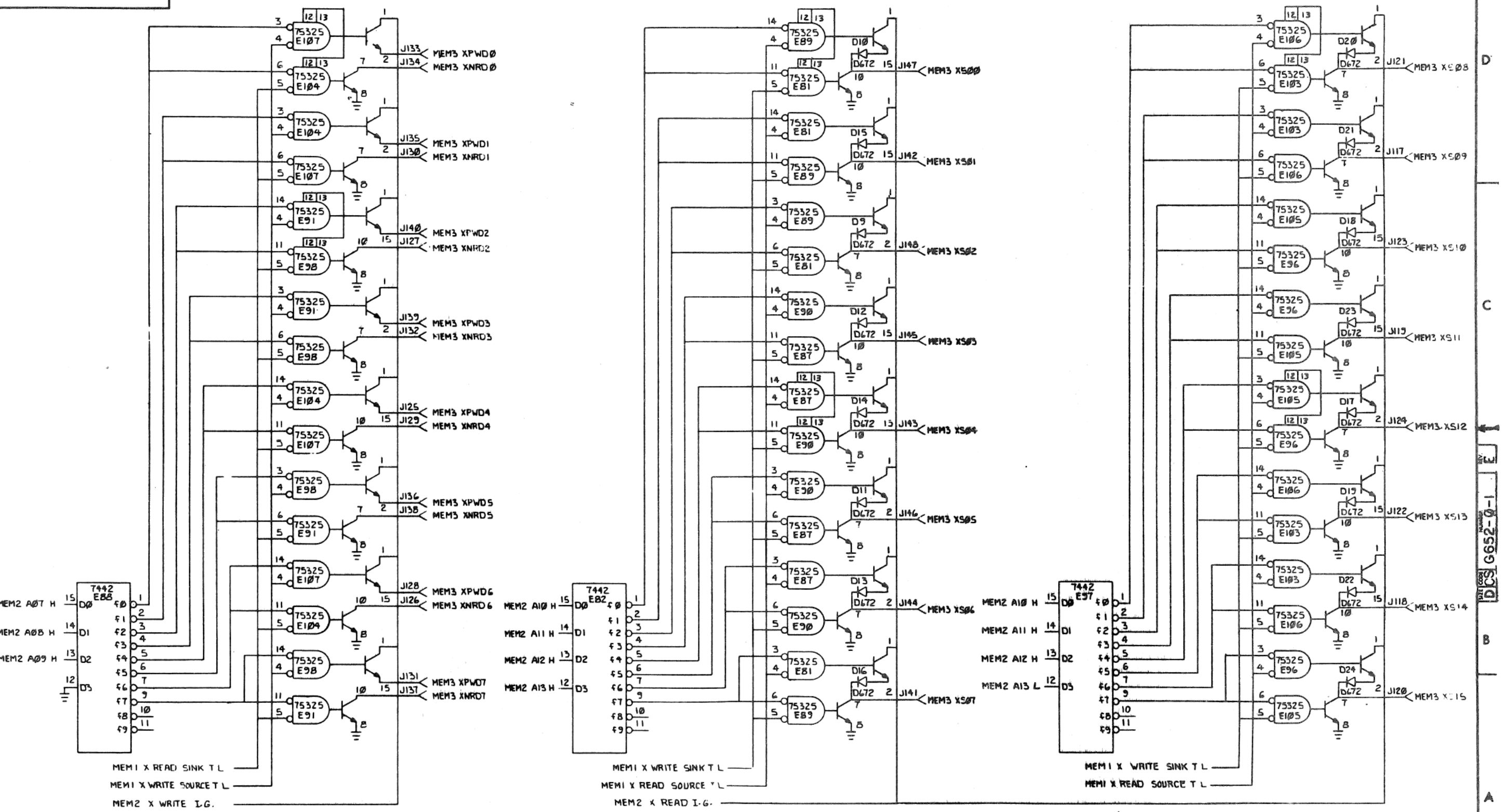


THIS DRAWING AND SPECIFICATIONS, HEREIN, ARE THE PROPERTY OF SPITAL EQUIPMENT CORPORATION AND SHALL NOT BE REPRODUCED OR COPIED OR USED IN WHOLE OR IN PART AS THE BASIS FOR THE MANUFACTURE OR SALE OF ITEMS WITHOUT WRITTEN PERMISSION. COPYRIGHT © 1975 SPITAL EQUIPMENT CORPORATION

DCS 6652-0-1

TITLE	16Kx18 MEMORY ELECTRONICS (MEM2)	SIZE/NO.	DCS 6652-0-1	NUMBER		REV.	E
SCALE	1/8"	SHEET	4 OF 11	DIST.			

"THE DESIGN AND SPECIFICATIONS HEREIN ARE THE PROPERTY OF DIGITAL EQUIPMENT CORPORATION AND SHALL NOT BE REPRODUCED OR COPIED OR USED IN WHOLE OR IN PART AS THE BASIS FOR THE MANUFACTURE OR SALE OF OTHER EQUIPMENT WITHOUT WRITTEN PERMISSION. COPYRIGHT © 1975 DIGITAL EQUIPMENT CORPORATION"



REVISIONS		
CHK	CHANGE NO.	REV.

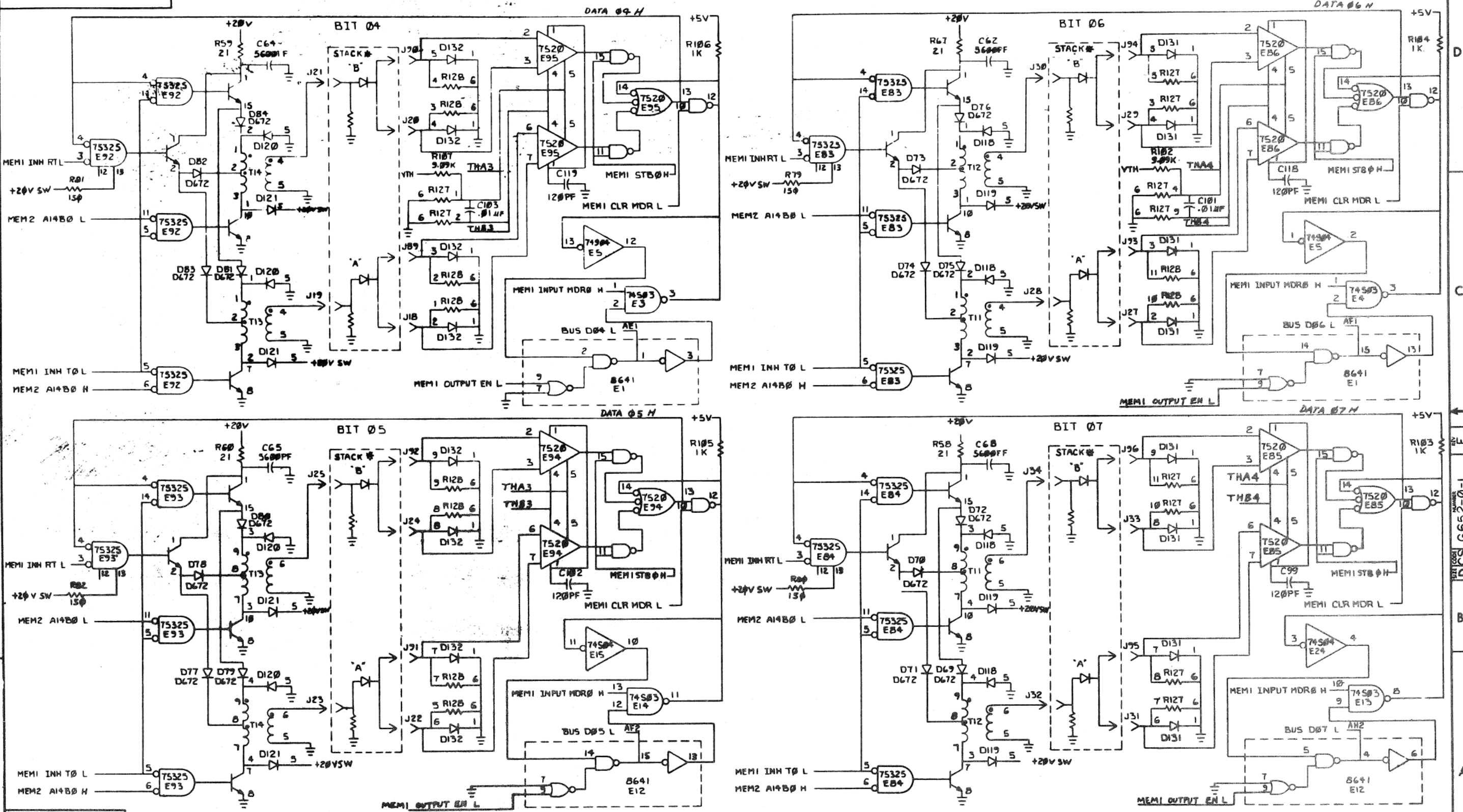
(X DRIVE)

TITLE: 6Kx18 MEMORY ELECTRONICS (MEM 3) SIZE CODE: DCS NUMBER: G652-0-1 REV. F

SCALE: 1/8" = 1" SHEET 5 OF 11 DWT.

THIS DRAWING AND SPECIFICATIONS HEREIN ARE THE PROPERTY OF DIGITAL EQUIPMENT CORPORATION AND SHALL NOT BE REPRODUCED OR COPIED OR USED IN WHOLE OR IN PART AS THE BASIS FOR THE MANUFACTURE OR SALE OF ITEMS WITHOUT WRITTEN PERMISSION. COPYRIGHT © 1975 DIGITAL EQUIPMENT CORPORATION

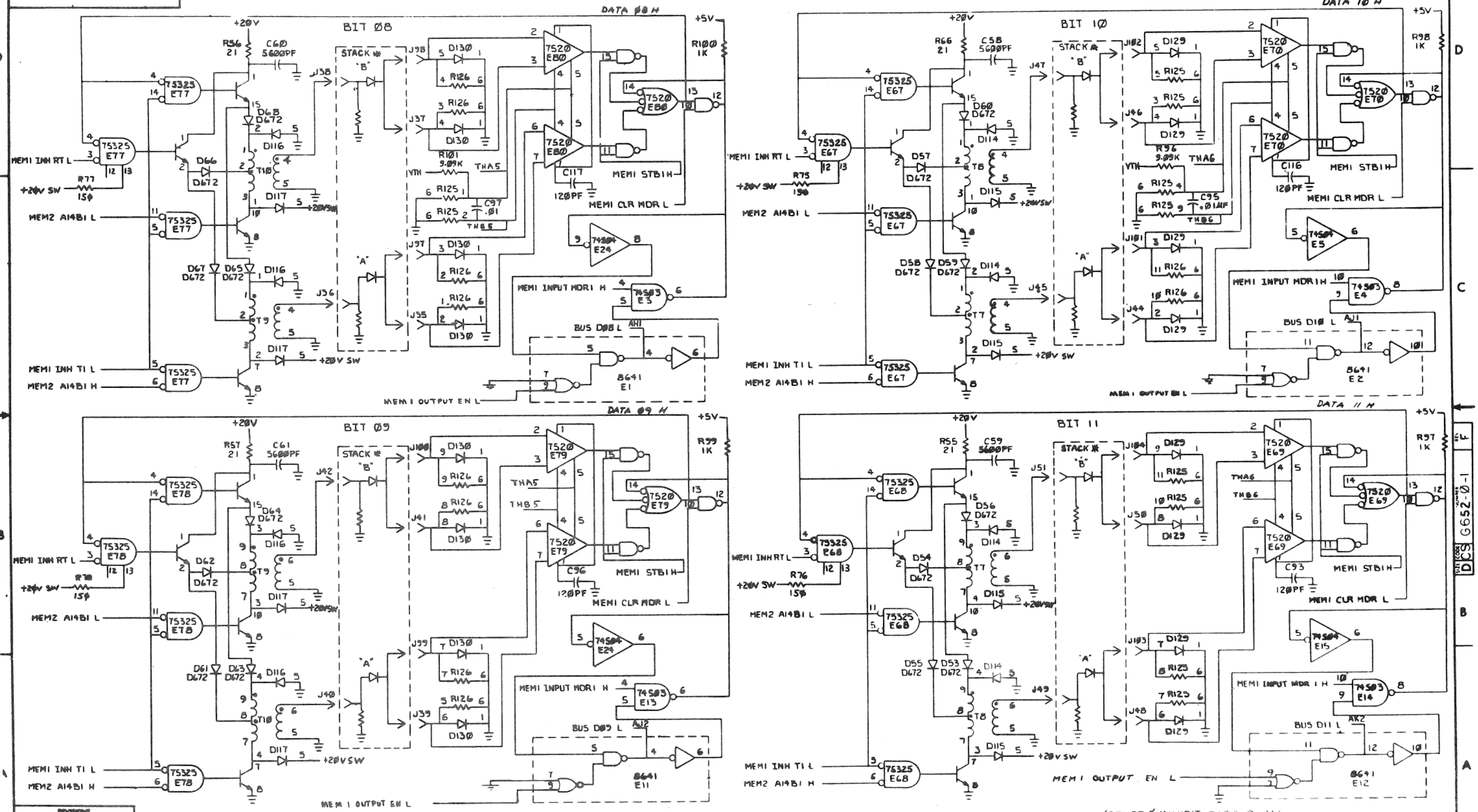
* MOUNTED ON H22Z 8D



REVISIONS			TITLE		SIZE CODE	NUMBER	REV.
CHK	CHANGE NO.	REV.	16Kx18 MEMORY ELECTRONICS (MEM6)		D CS	G652-0-1	F
			SCALE	SHEET	OF	DIST.	

THIS DRAWING AND SPECIFICATIONS HEREIN ARE THE PROPERTY OF DIGITAL EQUIPMENT CORPORATION AND SHALL NOT BE REPRODUCED OR COPIED OR USED IN WHOLE OR IN PART AS THE BASIS FOR THE MANUFACTURE OR SALE OF ITEMS WITHOUT WRITTEN PERMISSION. COPYRIGHT © 1975 DIGITAL EQUIPMENT CORPORATION

MOUNTED ON H2222 8D:

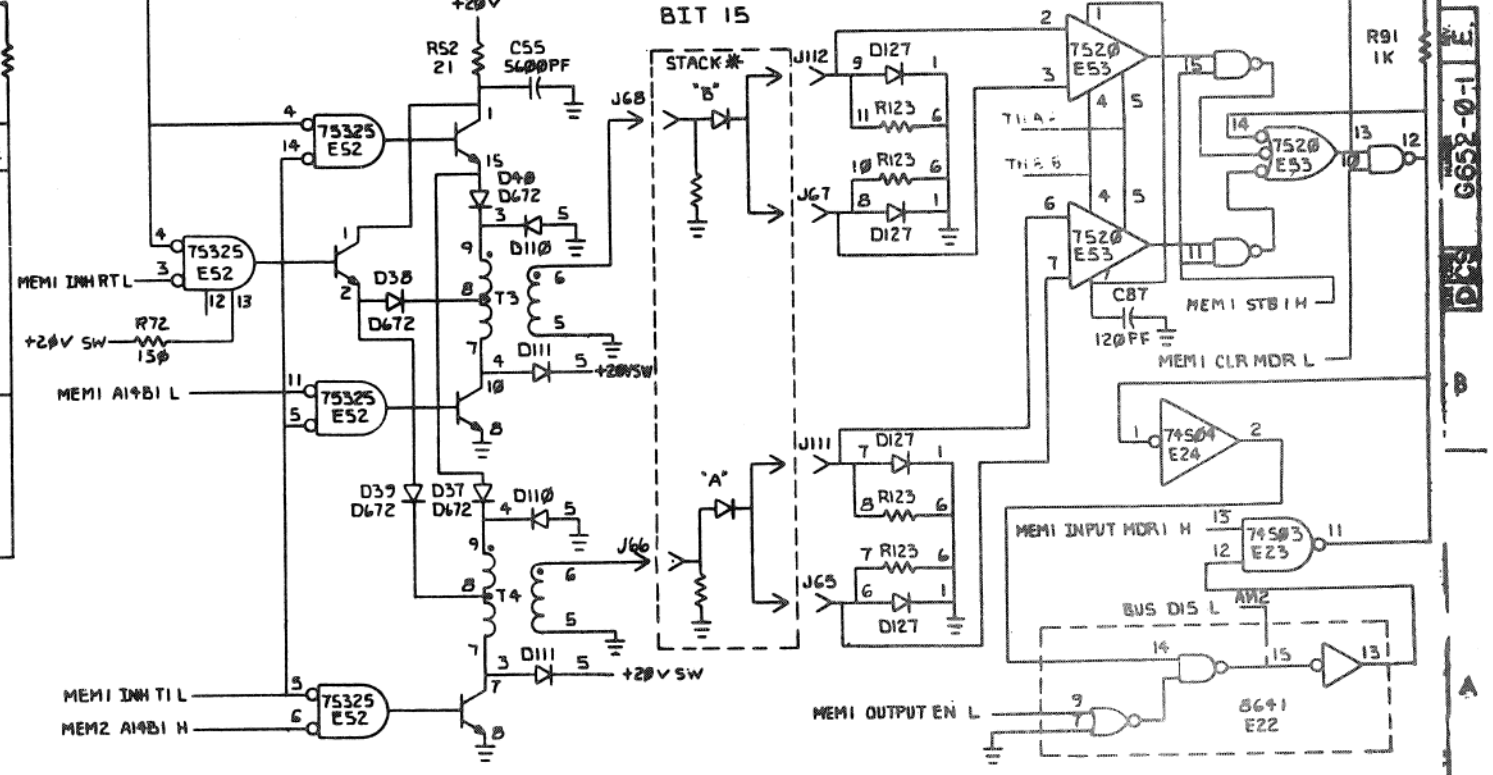
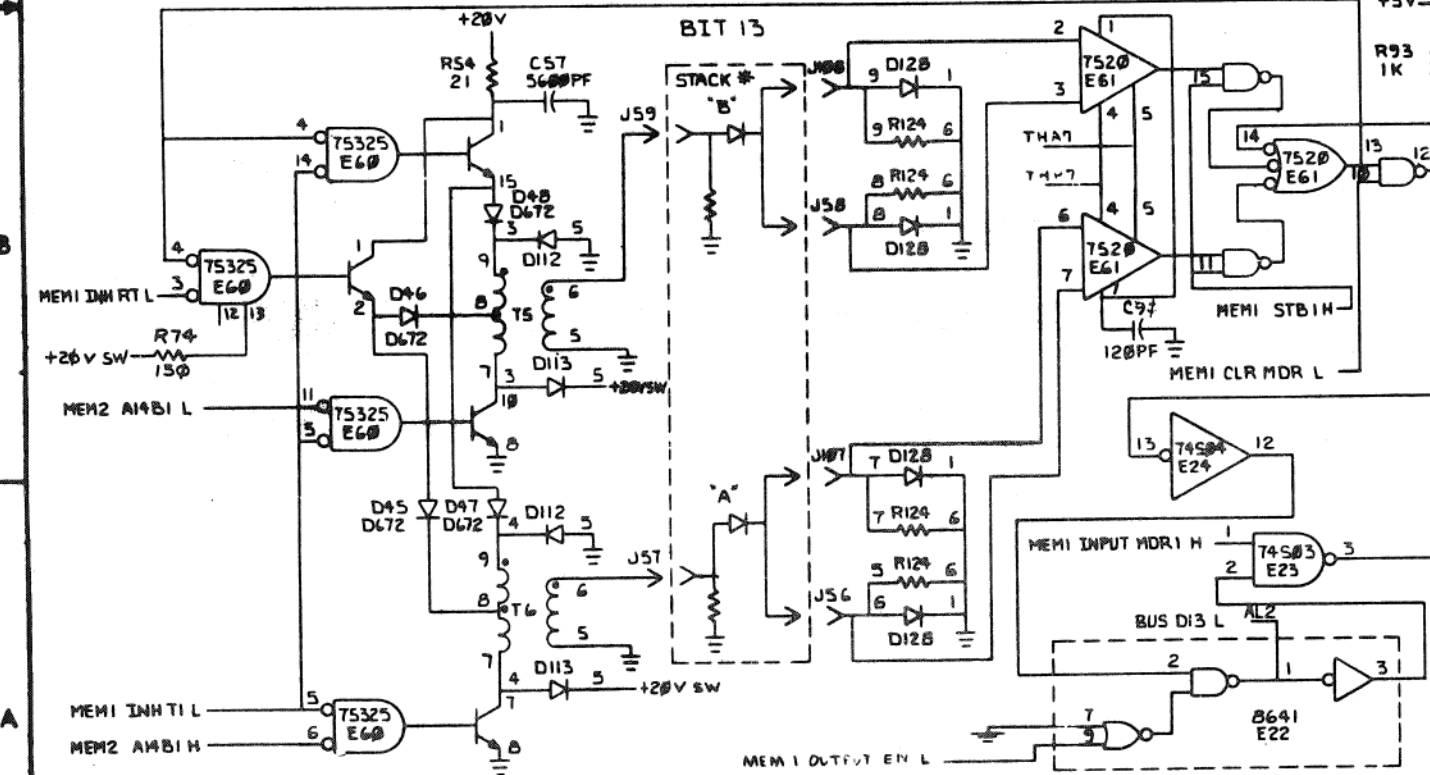
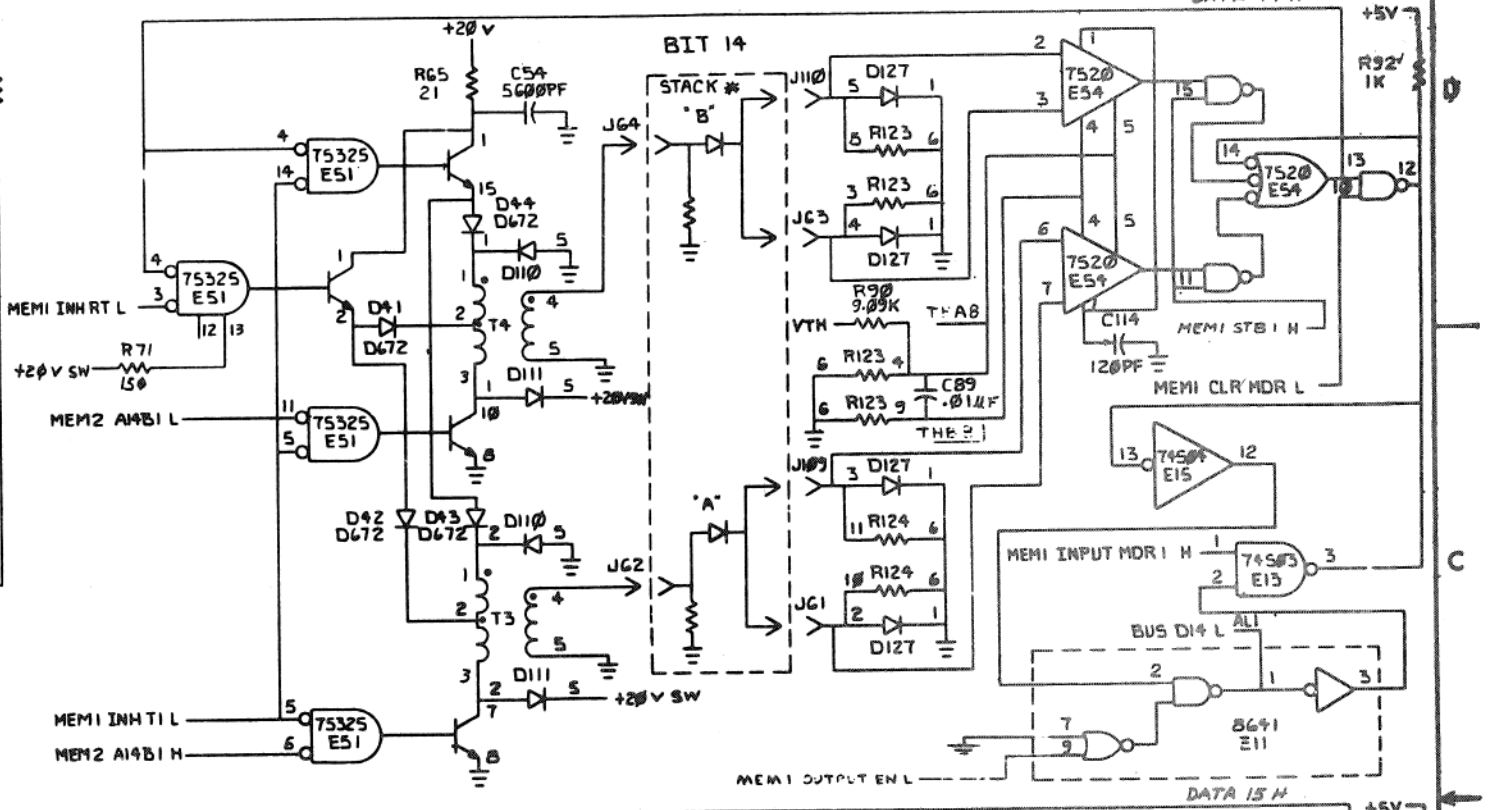
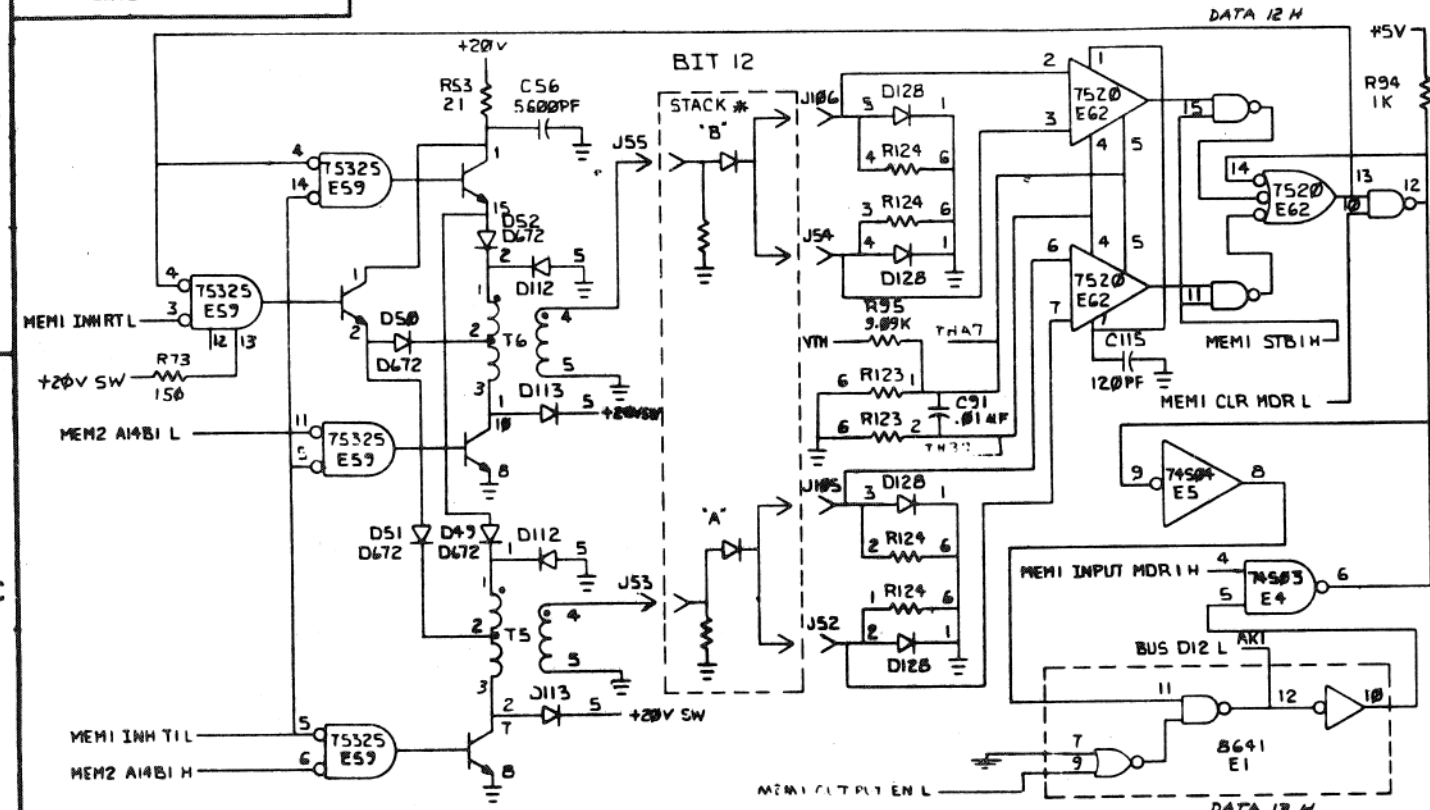


REVISIONS		
CHK	CHANGE NO.	REV.

TITLE: 6K x 18 MEMORY ELECTRONICS (MEM?)		SIZE: CODE	NUMBER	REV.
SCALE: 1/8"		SHEET: 9 OF 11	DIST: DCS	G652-0-1

THIS DRAWING AND SPECIFICATIONS HEREIN ARE THE PROPERTY OF DIGITAL EQUIPMENT CORPORATION AND SHALL NOT BE REPRODUCED OR COPIED IN WHOLE OR IN PART AS THE BASIS FOR THE MANUFACTURE OR SALE OF ITEMS WITHOUT WRITTEN PERMISSION. COPYRIGHT © 1975 DIGITAL EQUIPMENT CORPORATION

* MOUNTED ON H222 BD



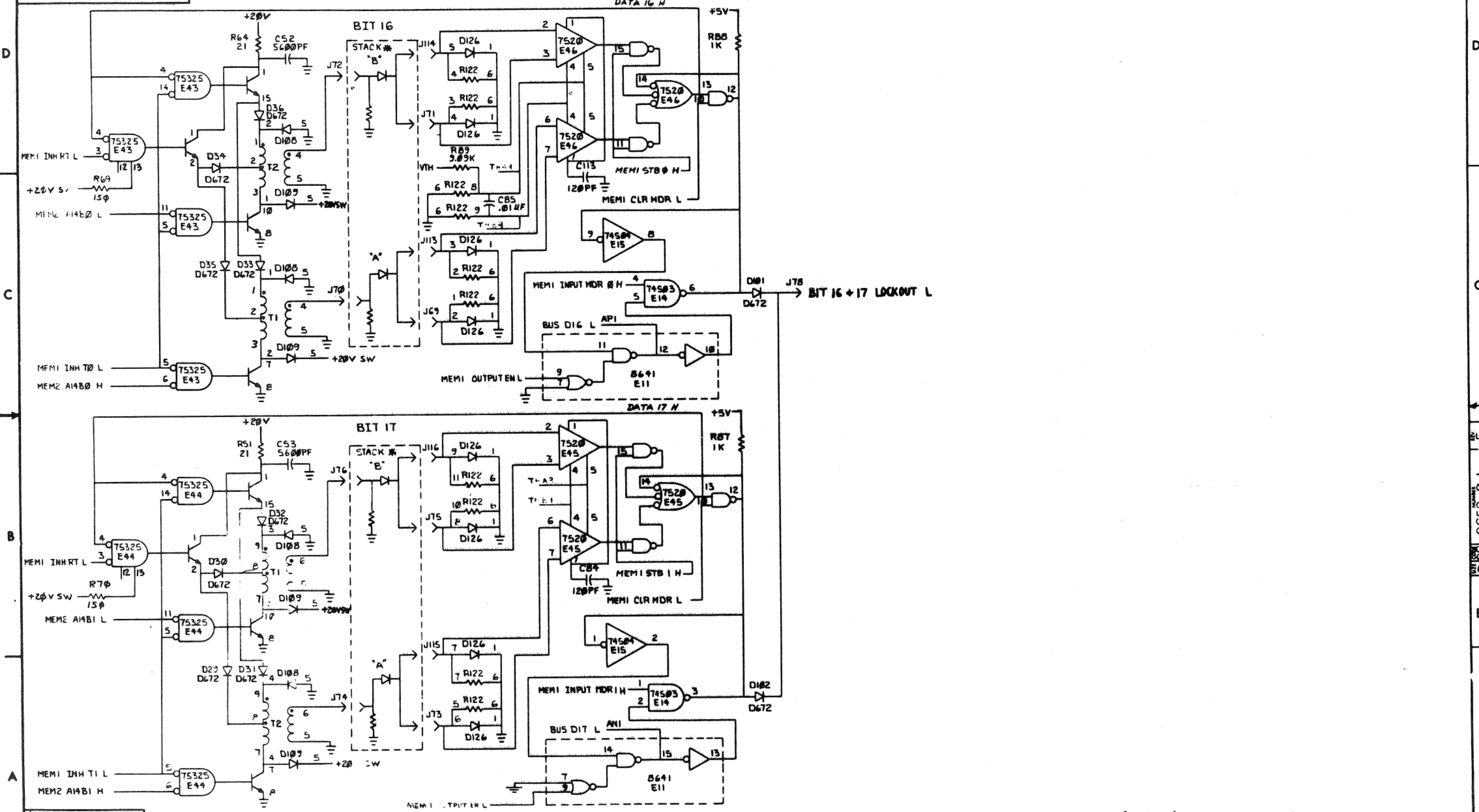
(SENSE & INHIBIT BITS 12-15)

REV.	CHANGE NO.	REV.

TITLE	6Kx18 MEMORY ELECTRONICS (MEM18)	SIZE CODE	D CS	NUMBER	G652-0-1	REV.	F
SCALE	1/8"	SHEET	10 OF 11	DWG.			

THIS DRAWING AND SPECIFICATIONS HEREBY ARE THE PROPERTY OF DIGITAL EQUIPMENT CORPORATION AND SHALL NOT BE REPRODUCED OR COPIED OR USED IN WHOLE OR IN PART AS THE BASIS FOR THE MANUFACTURE OR SALE OF ITEMS WITHOUT WRITTEN PERMISSION. COPYRIGHT © 1975 DIGITAL EQUIPMENT CORPORATION

* MOUNTED ON H222 BD.



REVISIONS		
CHK	CHANGE NO.	REV.

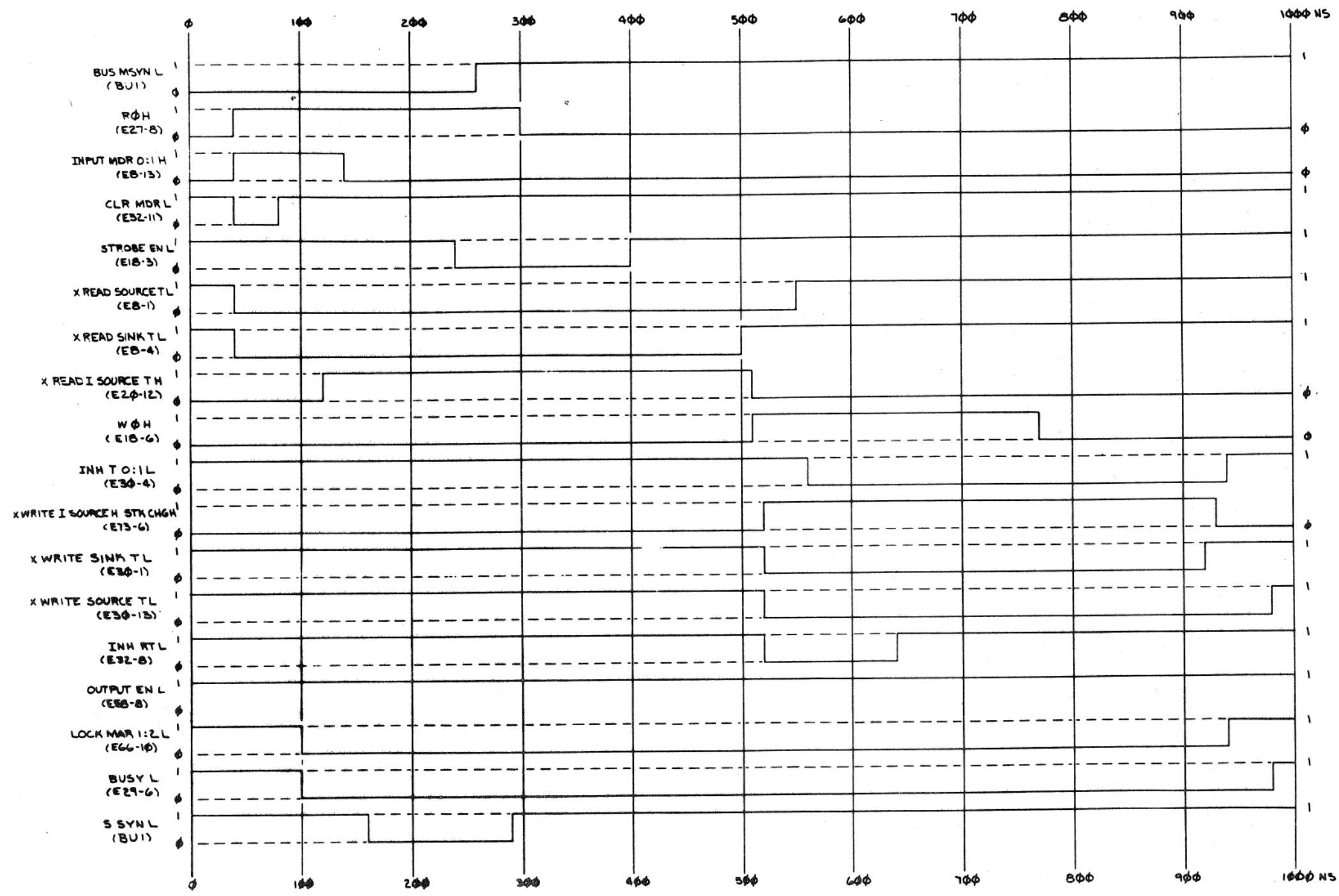
(SENSE INHIBIT BITS 16 & 17)		TITLE	16Kx18 MEMORY	BASE CODE	MEM9	NUMBER	DCS G652-0-1	REV.	F
SCALE		SHEET		OF		DIST.			

THIS DRAWING AND SPECIFICATIONS HEREIN ARE THE PROPERTY OF DIGITAL EQUIPMENT CORPORATION AND SHALL NOT BE REPRODUCED OR COPIED OR USED IN WHOLE OR IN PART AS THE BASIS FOR THE MANUFACTURE OR SALE OF ITEMS WITHOUT WRITTEN PERMISSION. COPYRIGHT © 1975, DIGITAL EQUIPMENT CORPORATION

DAT 0

8 7 6 5 4 3 2 1

2 DTD MMII-DP-2



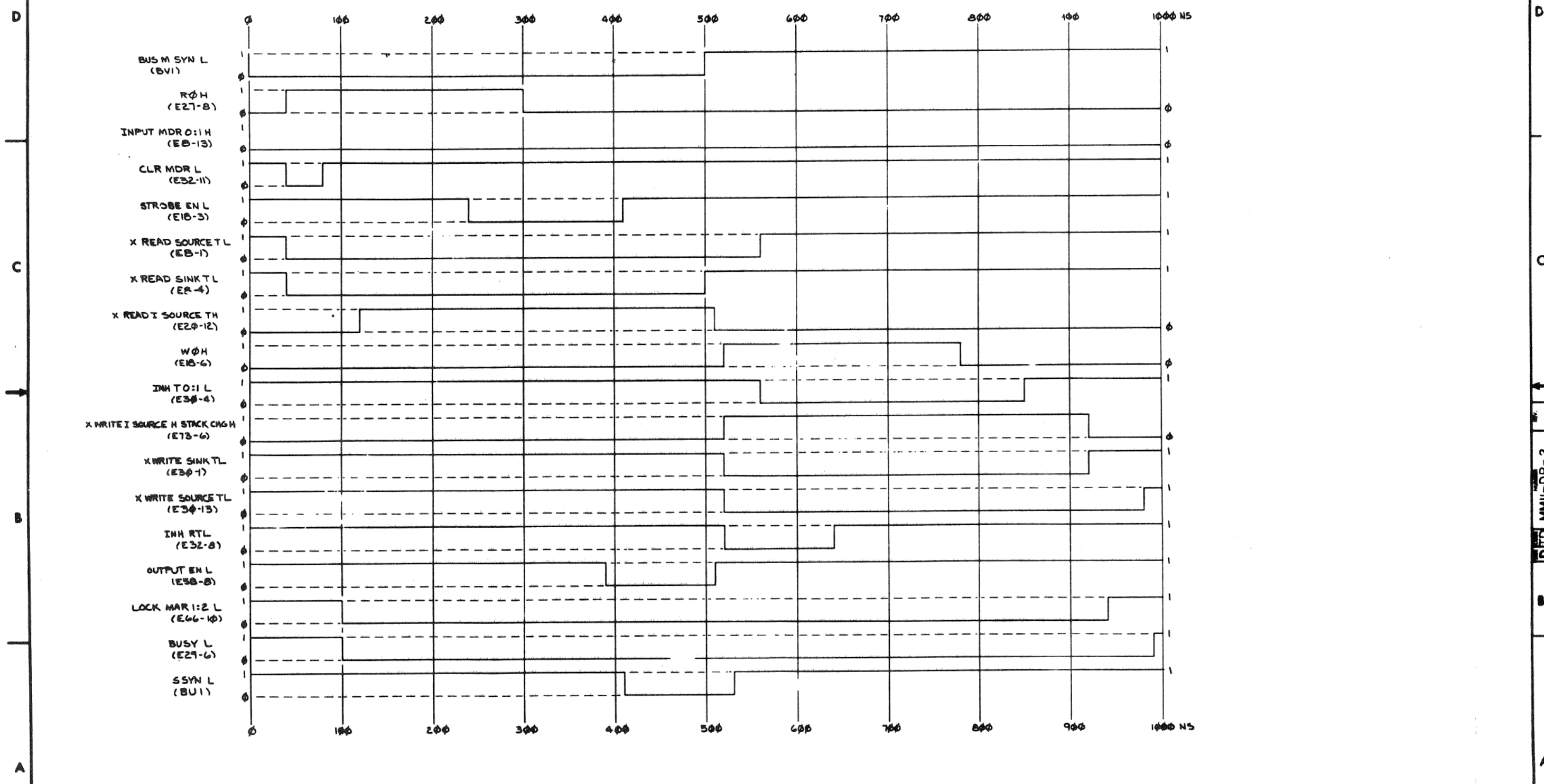
REV. 1
REV. 2
REV. 3
REV. 4
REV. 5
REV. 6
REV. 7
REV. 8

DRN. W. LUFKIN	1/28/75	FIRST USED ON	MMII-DP
CHK'D. W. LUFKIN	1/28/75	TITLE	MMII-DP
ENG. D. L. ...	1/28/75	TITLE	MMII-DP
PROJ. ENG. D. L. ...	1/28/75	TITLE	MMII-DP
PROD. QA W. L. ...	2/5/75	TITLE	MMII-DP
NEXT HIGHER ASSY.		SIZE CODE	D TD
B-DD-MMII-DP		NUMBER	MMII-DP-2
SCALE		REV.	
SHEET	1 OF 2	DIST.	

8 7 6 5 4 3 2 1 172

THIS DRAWING AND SPECIFICATIONS HEREIN ARE THE PROPERTY OF DIGITAL EQUIPMENT CORPORATION AND SHALL NOT BE REPRODUCED OR COPIED OR USED IN WHOLE OR IN PART AS THE BASIS FOR THE MANUFACTURE OR SALE OF ITEMS WITHOUT WRITTEN PERMISSION.
 COPYRIGHT © 1975 DIGITAL EQUIPMENT CORPORATION

DAT I



REVISIONS		
CHK	CHANGE NO.	REV.

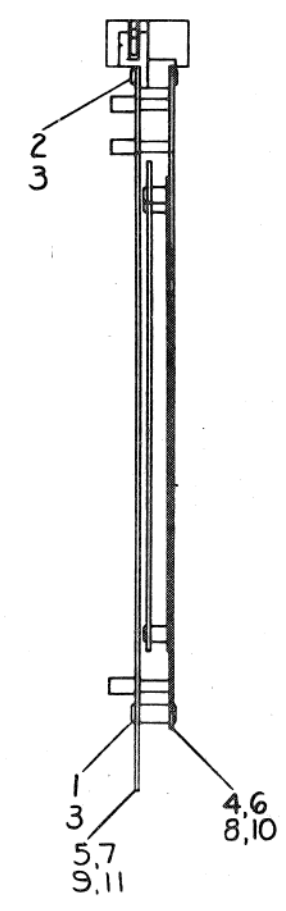
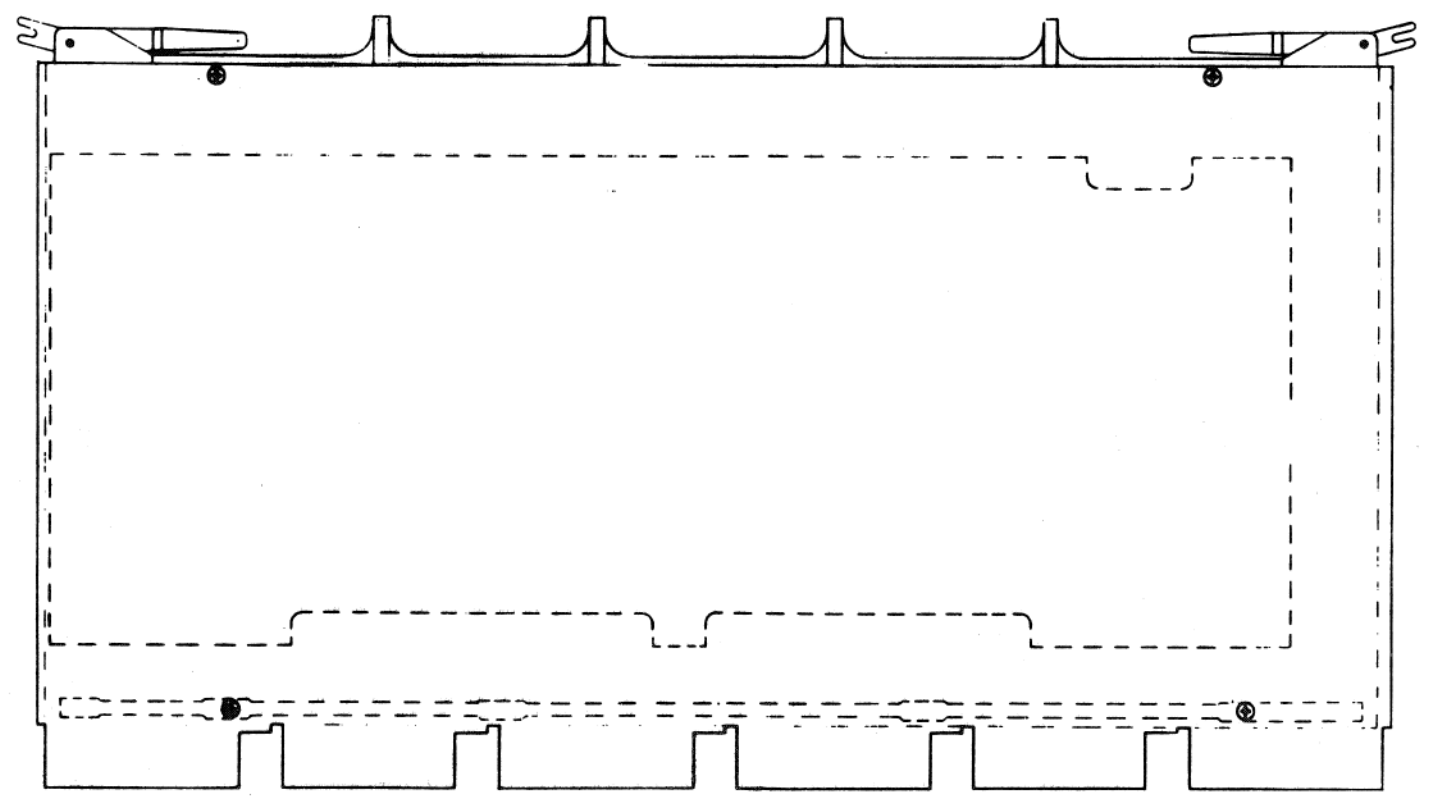
TITLE	MMII-DP TIMING DIAGRAM	D T D	MMII-DP-2
SCALE	+	SHEET	2 OF 2

THE DRAWING AND SPECIFICATIONS HEREIN ARE THE PROPERTY OF DIGITAL EQUIPMENT CORPORATION AND SHALL NOT BE REPRODUCED OR COPIED IN WHOLE OR IN PART AS THE BASIS FOR THE MANUFACTURE OR SALE OF ITEMS WITHOUT WRITTEN PERMISSION OF DIGITAL EQUIPMENT CORPORATION.

LEGEND			
VARIATION	DESCRIPTION	DWG. NUMBER	
MM11-D WILL INCLUDE MODULE COMBINATION C OR D	D	GG52-YA 16K x 18 CORE MEM.	D-CS-GG52-0-1
		H222-YB STACK BOARD (16 BIT)	D-UA-H222-B-0
	C	GG52 16K x 18 CORE MEM.	D-CS-GG52-0-1
		H222-B STACK BOARD (16 BIT)	D-UA-H222-B-0
MM11-DP WILL INCLUDE MODULE COMBINATION A OR B	B	GG52-YA 16K x 18 CORE MEM.	D-CS-GG52-0-1
		H222-YA STACK BOARD (18 BIT)	D-UA-H222-A-0
	A	GG52 16K x 18 CORE MEM.	D-CS-GG52-0-1
		H222-A STACK BOARD (18 BIT)	D-UA-H222-A-0

NOTE :

- MM11-DP MEMORY MODULE ASSEMBLY (16K x 18 BIT) MAY BE SUBSTITUTED FOR MM11-D MODULE ASSEMBLY (16K x 16 BIT).
- GG52-YA'S WILL NOT OPERATE WITH H222'S.
- H222-YA'S & YB'S WILL NOT OPERATE WITH GG52'S.



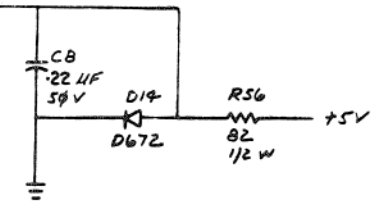
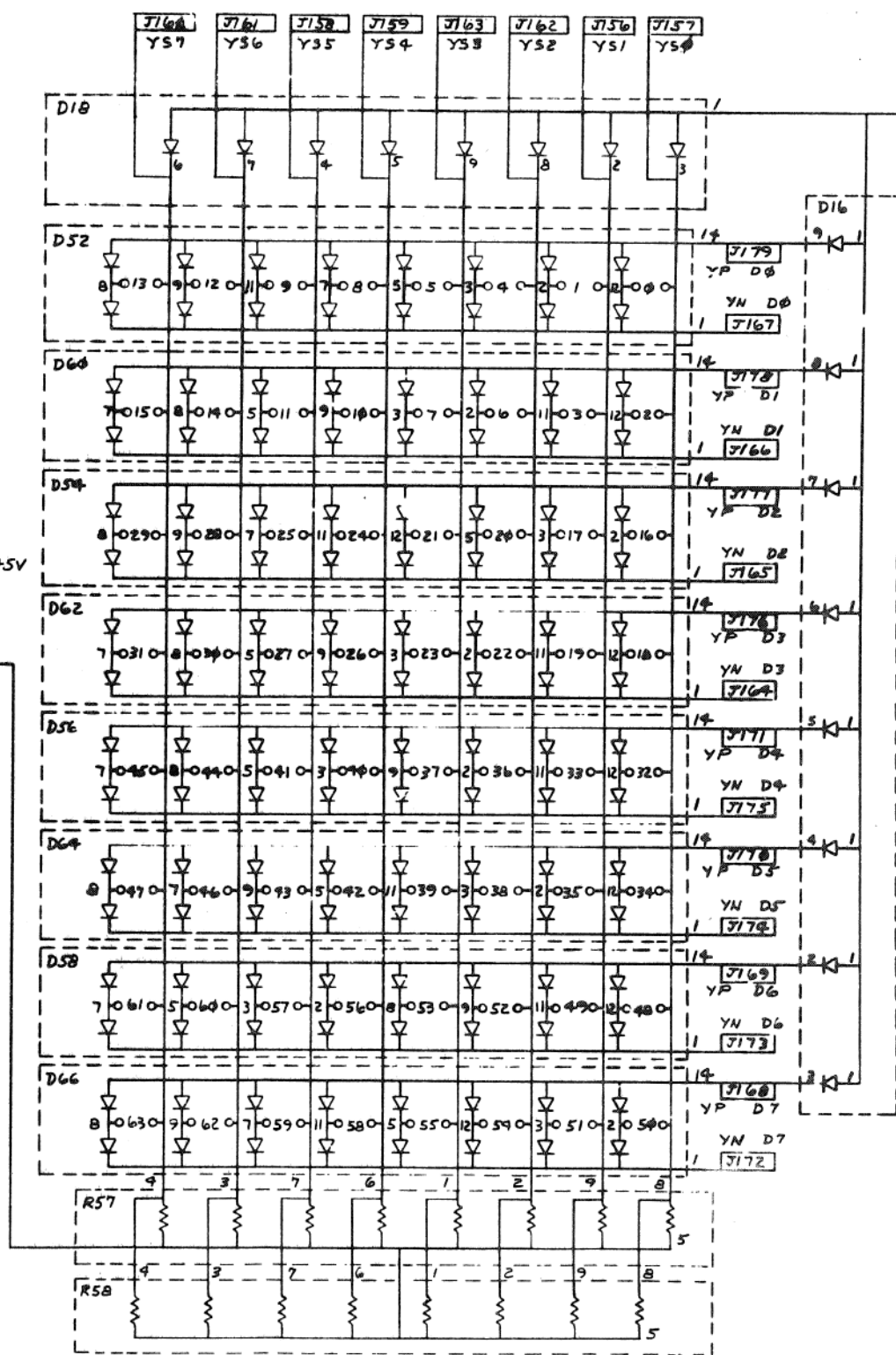
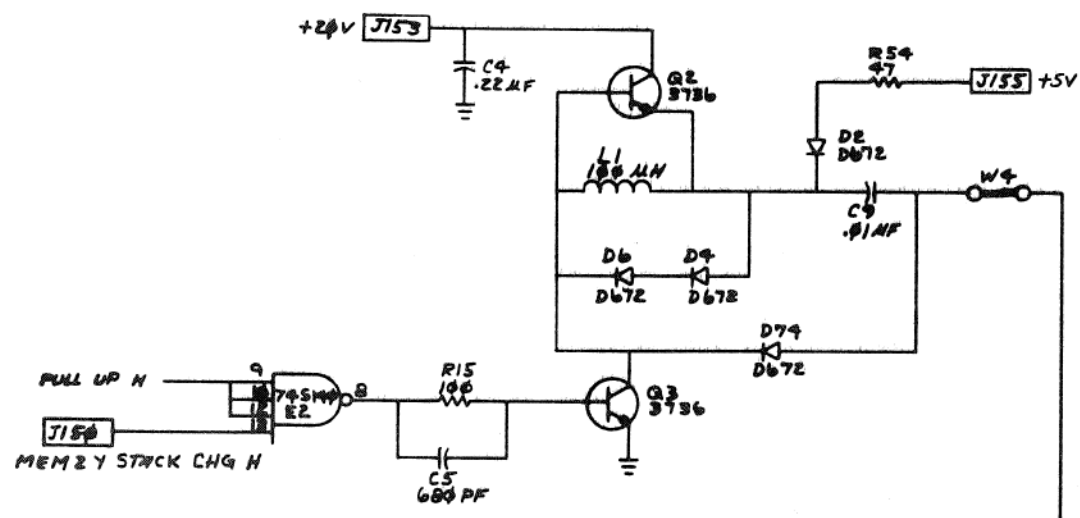
QTY	DESCRIPTION	DWG. PART NO.	ITEM NO.
4	4 WASHER LOCK #2 INT TOOTH	9006631-00	6
2	2 SCR. PHL. PHN HD. SS #2-56 x .31 L6	9006002-01	5
2	2 SCR. PHL. PHN HD. SS #2-56 x .19	9006000-01	4
1	1 16K x 18 CORE MEMORY (GG52)	D-CS-GG52-0-1	3
1	1 H222 STACK BOARD (16 BIT)	D-UA-H222-B-0	2
1	1 H222 STACK BOARD (18 BIT)	D-UA-H222-A-0	1

MM11-D	MM11-DP	DESCRIPTION		DWG. PART NO.	ITEM NO.
		UNLESS OTHERWISE SPECIFIED DIMENSIONS ARE IN INCHES			
ASSEMBLY	CLASS OF ACCURACY	NOMINAL DIMENSION RANGE BOUNDS			
NO. 20		0.005	0.010	0.015	0.020
SURFACE QUALITY	CHECK ONE	0.005	0.010	0.015	0.020
IN	MEDIUM	0.005	0.010	0.015	0.020
	PREFERRED	0.005	0.010	0.015	0.020
QUANTITY & VARIATION	MICROINCHES	0.005	0.010	0.015	0.020
		0.005	0.010	0.015	0.020
THIRD ANGLE PROJECTION	DRN. H. LUTKIN	7/14/75	FIRST USED ON	MM11-DP	010100
REMOVE BURRS AND BREAK SHARP CORNERS	CHK'D. [Signature]		TITLE	MM11-DP	
DO NOT SCALE DWG	ENG. [Signature]		MEMORY MODULE		
MATERIAL SEE PARTS LIST	PROG. ENG. [Signature]		ASSEMBLY		
FINISH	PROD. [Signature]				
	NEXT HIGHER ASSY.				
	B-DD-MM11-DP	SIZE CODE	NUMBER	REV.	
	SCALE 1/1	D JA	MM11-DP-0	A	
	SHEET 1 OF 1	DIST.			

REV.	DATE	BY	CHK'D.
A	1/17	MM11-DP-00002	

"Y" DIODE MATRIX

NOTE:
PREFIX FOR J156-J179 IS MEM4.

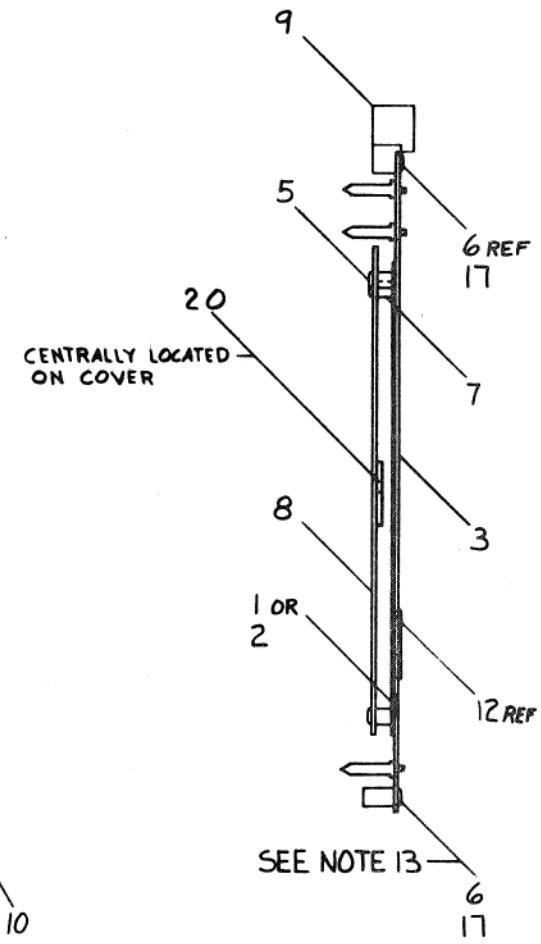
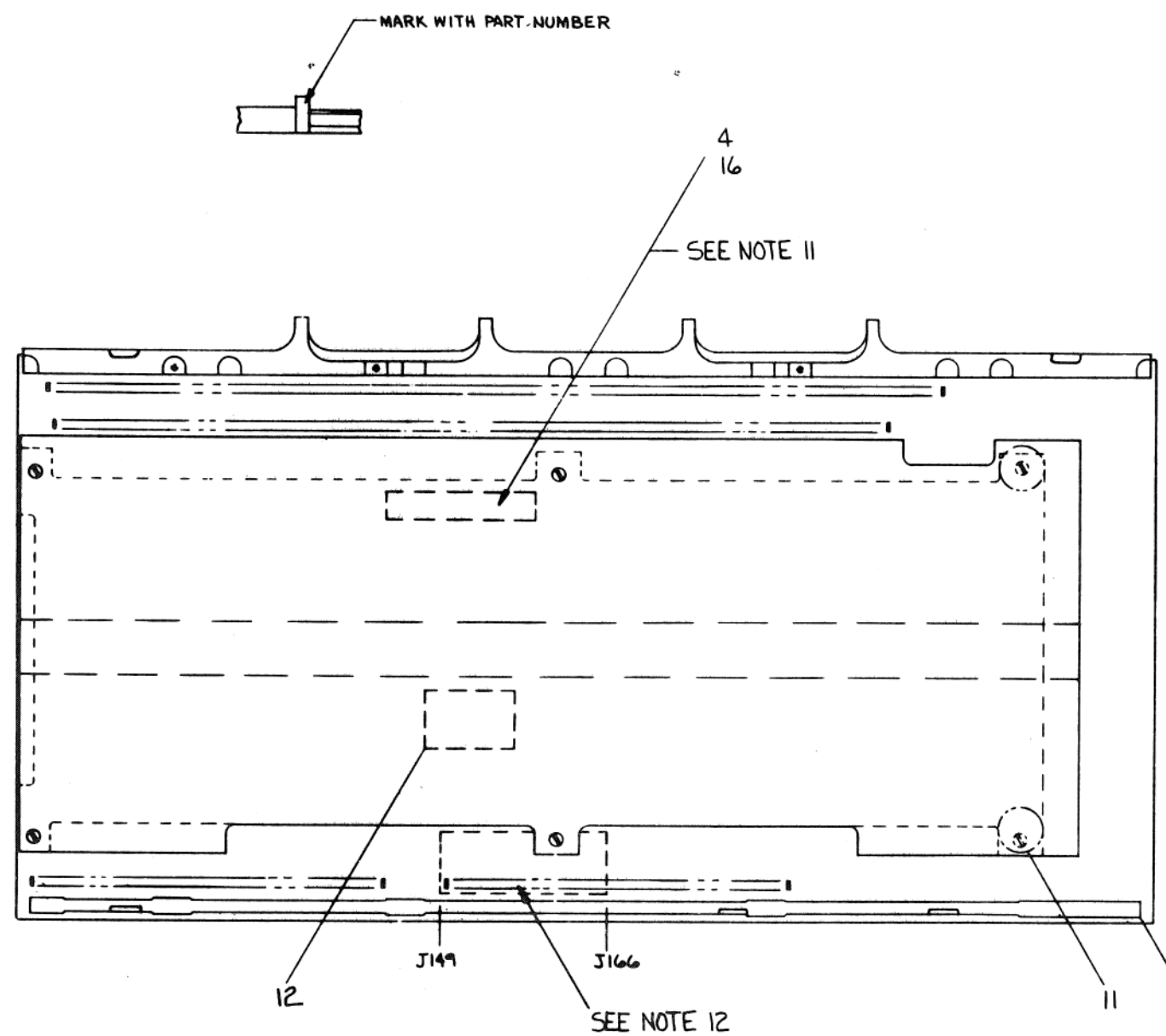


DRN. M. HARRIS	6-26-79	FIRST USED BY	MM11D/DR	50-0020
CHKD. J. J. J.		TITLE	16K X 16, 18	
ENG. J. J. J.			MEMORY STACK	
PROJ. ENG. J. J. J.				
PROD. B. A. W. J.	7/19/79			
NEXT HIGHER ASSY.				
D-UA-R222-D				
SCALE		D 5411554-0-1		
SHEET	1 OF 3	SUB.		

LEGEND			
NUMBER	NUMBER	VARIATION	USED ON
H222-YA	H222 A	16K X 16 BIT	MM11-DP
H222-YB	H222 B	16K X 16 BIT	MM11-D

- NOTES:
- BOND ITEM 1 (CORE PLANE) TO ITEM 3 (STACK BOARD) WITH ITEM 14 (ADHESIVE).
 - SWAGE ITEM 1 (CORE PLANE) AND ITEM 3 (STACK BOARD) TOGETHER WITH ITEM 7 (STANDOFF).
 - USE ITEM 15 (PROTECTIVE COATING) TO COAT ALL MAGNETIC WIRE TERMINATIONS AFTER ELECTRICAL TEST. (REF E-IA-7011661-0-0)
 - BOND TWISTED CABLES TO ITEM 1 (CORE PLANE) WITH ITEM 13 (ADHESIVE). SEE E-IA-7011661-0-0.
 - BOND X & Y DRIVE LOOPS IN PLACE WITH ITEM 13 (ADHESIVE). SEE E-IA-7011661-0-0 NOTES.
 - REFER TO E-IA-7011661-0-0 WHEN SOLDERING WIRE TERMINATIONS TO ITEM 3 (STACK BOARD).
 - ASSEMBLE ITEMS 9 & 10 (STIFFENERS) TO ITEM 3 (STACK BOARD) USING ITEMS 6 & 17.
 - ATTACH ITEM 8 (COVER) TO ITEM 3 (STACK BOARD) USING ITEM 5 (NYLON SCREW).
 - APPLY ITEM 11 (WARRANTY SEAL) WHERE SHOWN.
 - APPLY ITEM 12 (NAME PLATE) TO SIDE 2 OF ITEM 3 (STACK BOARD) AS SHOWN.
 - MARK ITEM 3 (STACK BOARD) ON SIDE 2 WITH DEC PART NUMBER, SEQUENTIAL SERIAL NUMBER, AND CIRCUIT SCHEMATIC REVISION USING ITEM 4 (INK) AND ITEM 16 (EPOXY). EXAMPLE: H222-A-001-CS-B.
 - TRIM AMP POSTS AND COMPONENT LEADS TO BE IN THIS AREA OF SIDE 2.
 - INSTALL ITEM 17 (LOCKWASHER) TORQUE HAND TIGHT.

THIS DRAWING AND SPECIFICATIONS HEREAFTER ARE THE PROPERTY OF DIGITAL EQUIPMENT CORPORATION AND SHALL NOT BE REPRODUCED OR COPIED OR USED IN WHOLE OR IN PART AS THE BASIS FOR THE MANUFACTURE OR SALE OF ITEMS WITHOUT WRITTEN PERMISSION. COPYRIGHT © 1974, DIGITAL EQUIPMENT CORPORATION



QTY	DESCRIPTION	DWG. PART NO.	ITEM NO.
1	TAPE FOAM ADHESIVE	9008956-01	20
1	CORE PLANE WIRING ASSY	E-IA-7011661-3-0	19
1	CORE PLANE WIRING ASSY	E-IA-7011661-2-0	18
8	WASHER, LOCK W/ INT TOOTH	9006631-00	17
1	EPOXY	4901082-00	16
1	PROTECTIVE COATING (F145)	4901083-00	15
1	ADHESIVE (RTV 3145)	4901086-00	14
1	ADHESIVE (RTV 3140)	4901085-00	13
1	NAME PLATE	9009233-00	12
2	WARRANTY SEAL		11
1	STIFFENER, FINGER END	D-PS-1211725-0-0	10
1	STIFFENER, HANDLE END	D-PS-1211726-0-0	9
1	COVER	D-MD-5511797-0-0	8
6	STANDOFF .25 DIA X .19 LG	9009677-00	7
8	SCR, PHL PAN HD SS #2-56 X .19	9006000-01	6
6	SCR, SLT BDR HD NYLON #4-40 X .19	9009233-04	5
1	INK, BLACK	4901084-00	4
1	H222 STACK BOARD	5411554	3
-	CORE PLANE WIRING ASSY	E-IA-7011661-1-0	2
-	CORE PLANE WIRING ASSY	E-IA-7011661-0-0	1

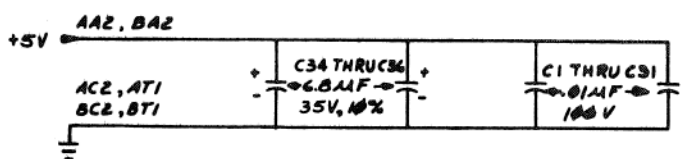
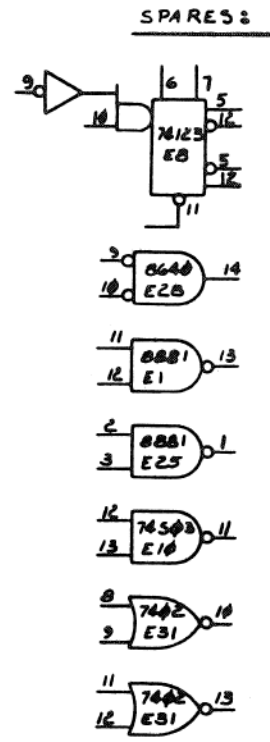
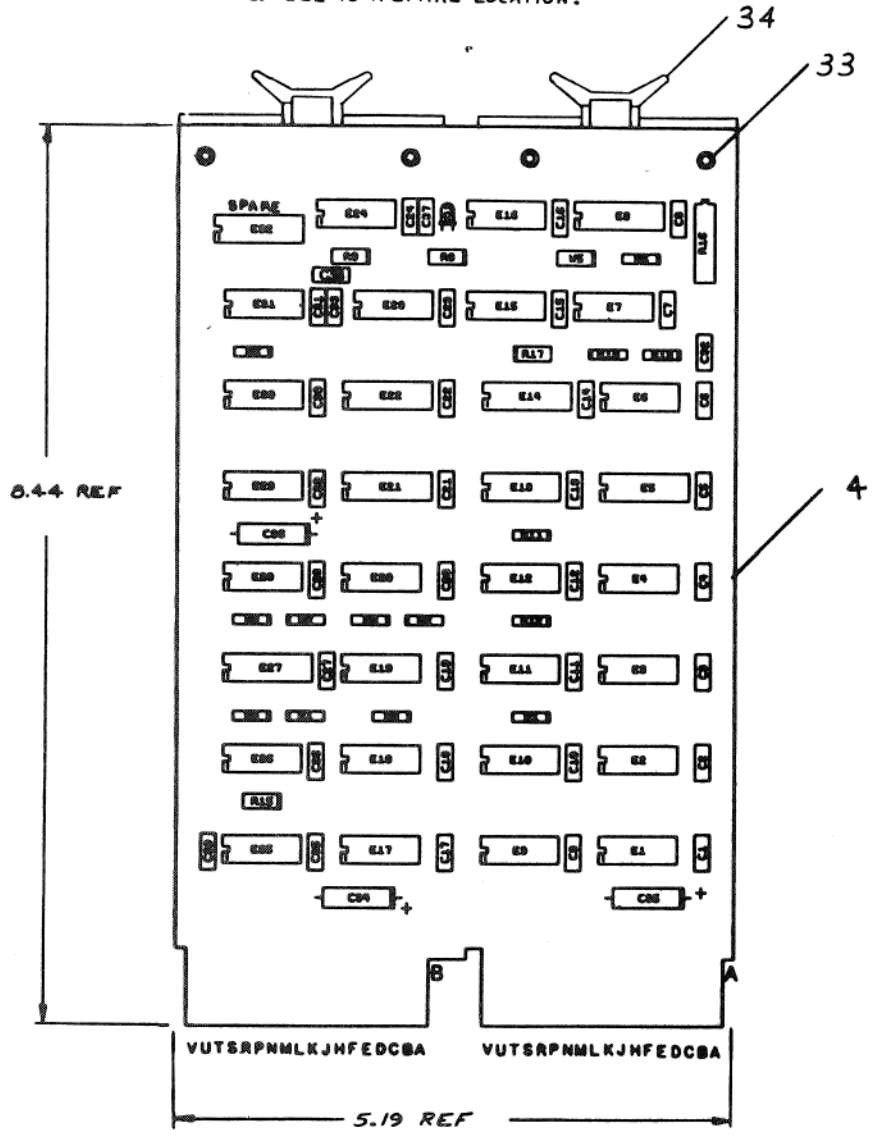
UNLESS OTHERWISE SPECIFIED DIMENSIONS ARE IN INCHES	
ANGLES 30° 90°	CLASS OF ACCURACY (CHECK ONE)
SURFACE QUALITY IN	FINISH
QUANTITY & VARIATION	PREFERRED
MICROINCHES	

DRN. M. LUFKIN	7/17/73	FIRST USED ON	MM11-DP
CHK'D		TITLE	H222 CORE MEMORY STACK ASSEMBLY
ENG. D. SMELSER	12/2/75	SIZE CODE	D UA H222-0-0
PROJ. ENG.		NUMBER	B
PROD. CONTROL		REV.	
DO NOT SCALE DWG		SCALE	1/1
SEE PARTS LIST		SHEET	1 OF 1

REV.	DATE	BY	APP.
A	11/1/72	D. SMELSER	
B	12/2/75	D. SMELSER	
C	12/2/75	D. SMELSER	

"THIS DRAWING AND SPECIFICATIONS, HEREIN, ARE THE PROPERTY OF DIGITAL EQUIPMENT CORPORATION AND SHALL NOT BE REPRODUCED OR COPIED OR USED IN WHOLE OR IN PART AS THE BASIS FOR THE MANUFACTURE OR SALE OF PRODUCTS WITHOUT WRITTEN PERMISSION."
 COPYRIGHT © 1975 DIGITAL EQUIPMENT CORPORATION

NOTES:
 1. ALL RESISTORS 1/4 W, 5% UNLESS OTHERWISE NOTED.
 ALL CAPACITORS ARE 100V, 20% UNLESS OTHERWISE NOTED.
 2. JUMPER CONTROL OPERATIONS AS FOLLOWS:
 W1 THRU W4 SELECT CSR ADDRESS, W5 CAPACITOR FOR S SYN DLY, NOT USED.
 3. E32 IS A SPARE LOCATION.



8640	1	8
8266	8	16
74157	8	16
74174	8	16
74123	8	16
7485	8	16
314A	1	8
IC TYPE	QND	+5V
QND AND 5V ARE USUALLY PIN 7 AND 16 RESPECTIVELY EXCEPTIONS ARE STATED ABOVE		
IC PIN LOCATIONS		

REF	CIRCUIT SCHEMATIC	D-CS-M7850-0-1	REF
REF	X-Y COORDINATE HOLE LOCATION	K-CO-M7850-0-4	1
REF	ASSY/DRILLING HOLE LAYOUT	D-AN-M7850-0-5	2
REF	MODULE ECO HISTORY	B-MN-M7850-0-6	3
1	ETCHED CIRCUIT BOARD	5010651-00	4
1	C39	CAP 470 PF, 100V, 5% (DM)	100002A-00 5
2	C33, C37	CAP 330 PF, 100V, 5% (DM)	1000023-00 6
3B	C1 THRU C32	CAP .01 MF, 100V, 20% DISC	1001610-01 7
3	C34, C35, C36	CAP 6.8 MF, 35V, 10% STANT	1005306-00 8
1	D1	DIODE, LED.	1110324-00 9
5	R1 THRU R5	RES 4.7K 1/4W 5%	1500447-00 10
3	R8, R9, R15	RES 100 1/4W 5%	1500225-00 11
5	R6, R10, R11, R12, R17	RES 470 1/4W 5%	1500316-00 12
1	R13	RES 1K 1/4W 5%	1500365-00 13
1	R16	RES 10K 3/4W 20% (1% PR. RT)	1309143-10 14
1	E24	I.C. 7400	1905575-00 15
1	E30	I.C. 7430	1905578-00 16
1	E31	I.C. 7402	1909004-00 17
1	E19	I.C. 314A	1909704-00 18
1	E23	I.C. 7408	1910155-00 19
4	E1, E9, E17, E25	I.C. 8881	1909705-00 20
1	E16	I.C. 74H04	1909931-00 21
1	E27	I.C. 7485	1910224-00 22
1	E8	I.C. 74123	1910436-00 23
1	E10	I.C. 74503	1910533-00 24
1	E15	I.C. 74574	1910544-00 25
1	E21	I.C. 74174	1910652-00 26
2	E5, E22	I.C. 74157	1910655-00 27
9	E2, E3, E11, E12, E18, E20, E26, E28, E29	I.C. 8640	1911469-00 28
2	E4, E13	I.C. 745280	1911573-00 29
1	E14	I.C. 8266	1909934-00 30
2	E6, E7	I.C. 7474	1905547-00 31
4	W1 THRU W4	INSULATED JUMPER	9009185-00 32
4		EYELET	9006732-00 33
2		HANDLE, FLIP-CHIP (MAGENTA)	9008337-6 34

PARTS LIST

ETCH BOARD REV. **B**

DATE: 2-5-75
 M. LUFKIN
 DATE: 2/1/75
 DATE: 2/1/75
 DATE: 2/1/75
 DATE: 2/1/75
 DATE: 2/1/75

digital

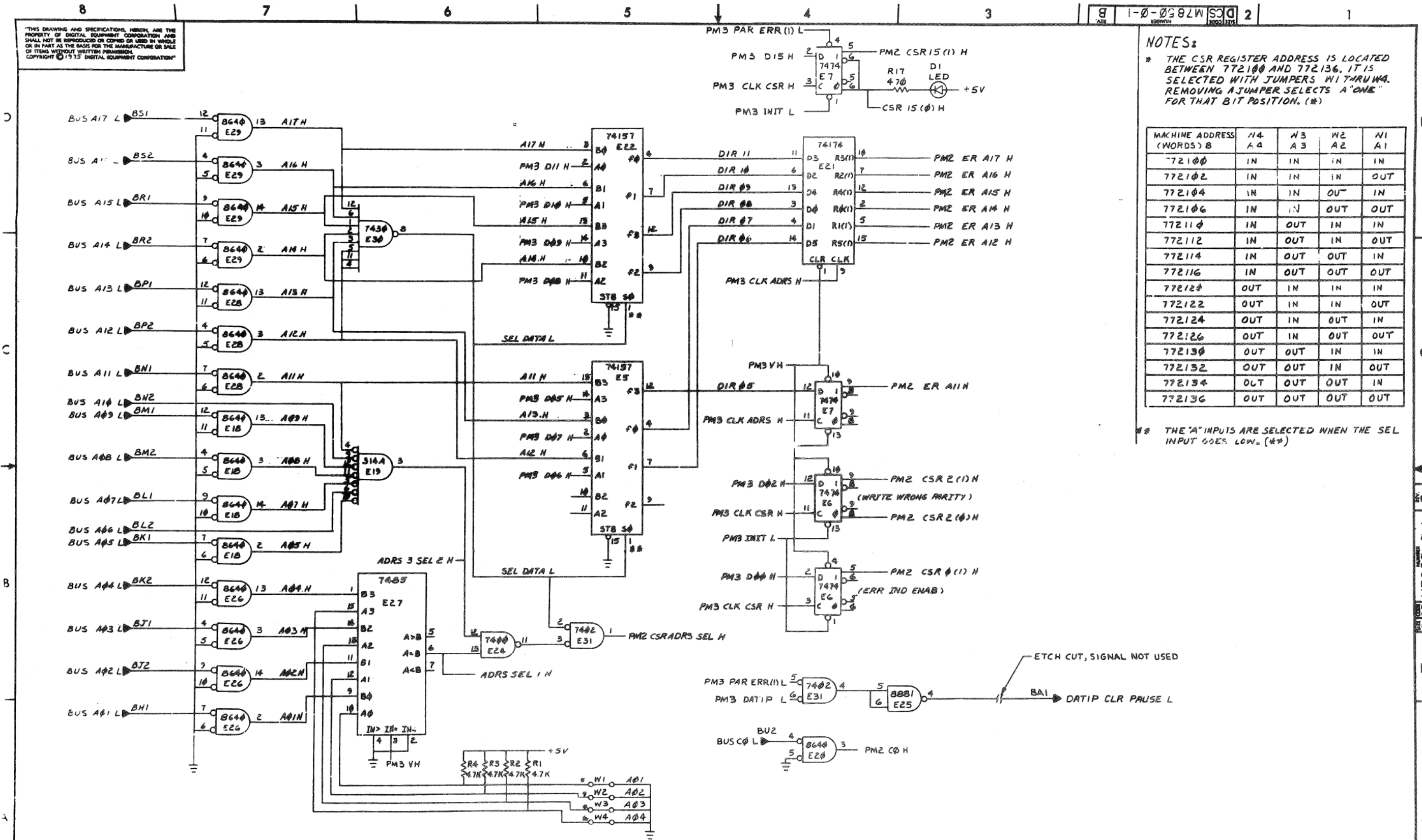
TITLE: **PARITY MODULE**

SIZE CODE: **DCS M7850-0-1** NUMBER: **B** REV. **B**

SCALE: 1 of 3

SEMICONDUCTOR CONVERSION CHART

"THIS DRAWING AND SPECIFICATIONS HEREIN ARE THE PROPERTY OF DIGITAL EQUIPMENT CORPORATION AND SHALL NOT BE REPRODUCED OR COPIED OR USED IN WHOLE OR IN PART AS THE BASIS FOR THE MANUFACTURE OR SALE OF ITEMS WITHOUT WRITTEN PERMISSION. COPYRIGHT © 1975 DIGITAL EQUIPMENT CORPORATION"



NOTES:
 * THE CSR REGISTER ADDRESS IS LOCATED BETWEEN 772100 AND 772136. IT IS SELECTED WITH JUMPERS WITHRUWA. REMOVING A JUMPER SELECTS A "ONE" FOR THAT BIT POSITION. (**)

MACHINE ADDRESS (WORDS) B	A4	A3	A2	A1
772100	IN	IN	IN	IN
772102	IN	IN	IN	OUT
772104	IN	IN	OUT	IN
772106	IN	IN	OUT	OUT
772110	IN	OUT	IN	IN
772112	IN	OUT	IN	OUT
772114	IN	OUT	OUT	IN
772116	IN	OUT	OUT	OUT
772120	OUT	IN	IN	IN
772122	OUT	IN	IN	OUT
772124	OUT	IN	OUT	IN
772126	OUT	IN	OUT	OUT
772130	OUT	OUT	IN	IN
772132	OUT	OUT	IN	OUT
772134	OUT	OUT	OUT	IN
772136	OUT	OUT	OUT	OUT

** THE 'A' INPUTS ARE SELECTED WHEN THE SEL INPUT GOES LOW. (**)

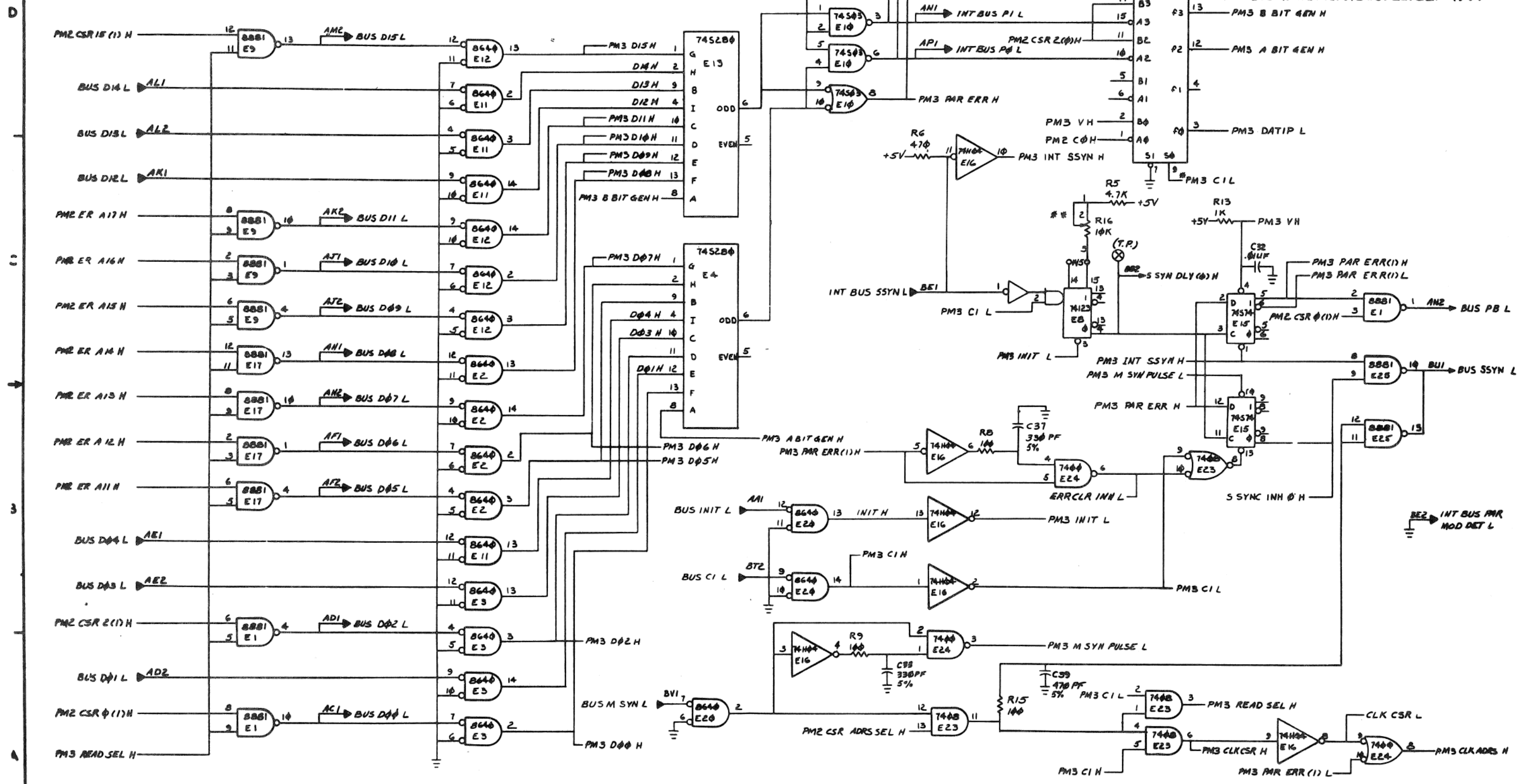
ETCH CUT, SIGNAL NOT USED

CHK	CHANGE NO.	REV.

TITLE: PARITY MODULE (PM2)
 SIZE CODE: DCS
 NUMBER: M7850-0-1
 REV: B
 SHEET: 2 OF 3
 DIST.:

THIS DRAWING AND SPECIFICATIONS HEREIN ARE THE PROPERTY OF DIGITAL EQUIPMENT CORPORATION AND SHALL NOT BE REPRODUCED OR COPIED OR USED IN WHOLE OR IN PART AS THE BASIS FOR THE MANUFACTURE OR SALE OF ITEMS UNLESS BY WRITTEN PERMISSION OF DIGITAL EQUIPMENT CORPORATION
 COPYRIGHT © 1973 DIGITAL EQUIPMENT CORPORATION

NOTES:
 * B INPUTS SELECTED WHEN SEL IS LOW (*)
 ** SET R45 TO 110 NSEC ± 10% FROM SIGNAL ON PIN BE1 GOING LOW TO SIGNAL ON PIN BE2 GOING HIGH (@ 1.5V LEVEL) (*)



REVISIONS		
CHK	CHANGE NO.	REV.

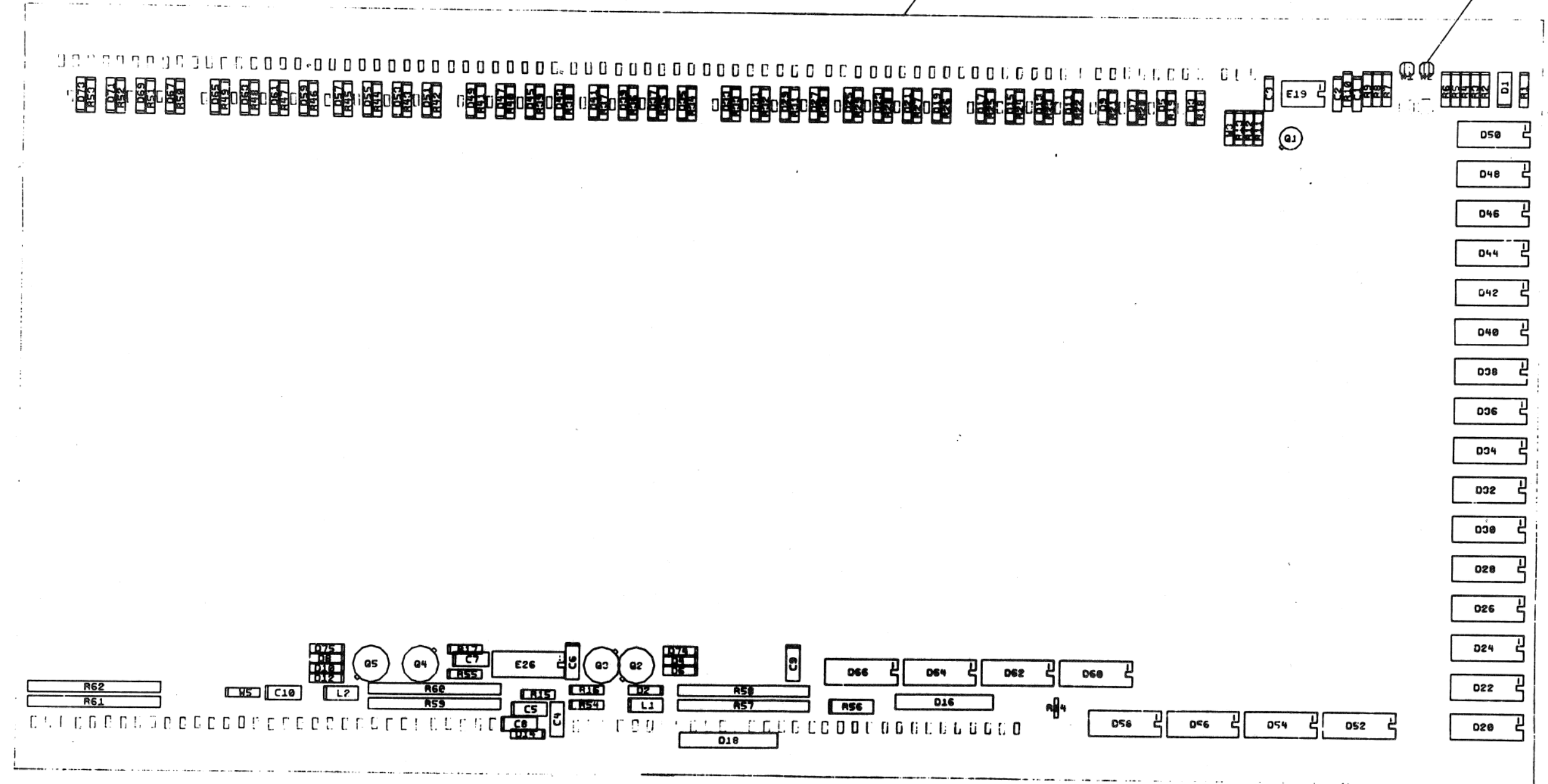
TITLE	PARITY MODULE (PM3)	SIZE CODE	DCS M7850-0-1	NUMBER	B
SCALE		SHEET	3 OF 3	DIST.	

THESE ARE THE
 DIGITAL EQUIPMENT CORPORATION AND SHALL
 BE PROVIDED TO THE USER AS PART OF THE
 PRINT AS THE BASIS FOR THE MANUFACTURE OR SALE OF
 ITEMS WITHOUT WRITTEN PERMISSION.
 COPYRIGHT © 1977 DIGITAL EQUIPMENT CORPORATION

U 1149 2 1

D
C
B
A

b 5 4 3



- 36
- D1
- D50
- D48
- D46
- D44
- D42
- D40
- D38
- D36
- D34
- D32
- D30
- D28
- D26
- D24
- D22
- D20

NOTES:

CHECK CHANGE NO	REV	DATE
541554-0002	D	1/7/78
D. SWELSER		

SIGNATURES	DATE	digital
DRN. <i>[Signature]</i>	1/7/78	
CHK. <i>[Signature]</i>	1/7/78	TITLE 16K X 16,13 MEMORY STACK
ENG. <i>[Signature]</i>	1/7/78	
PROJ. ENG. <i>[Signature]</i>	1/7/78	
PROD.		SCALE 2 /
SHT. / OF /		
ETCH REV C	FIRST USED ON	SIZE CODE NUMBER REV D UA5411554-0-0 D

8 7 6 5 4 3 2 1

183

US* 80577

DIGITAL EQUIPMENT CORPORATION MAYNARD, MASSACHUSETTS PARTS LIST				QUANTITY / VARIATION									
MADE BY M. Poirier		CHECKED <i>V. Sanzian</i>		SECTION									
DATE 7/7/75		DATE 7/7/75		ISSUED SECT.									
ENG <i>D. Smaker</i>		PROD <i>R. A. Hill</i>		ISSUED SECT.									
DATE 7/14/75		DATE 7/14/75		ISSUED SECT.									
ITEM NO.	DWG NO. / PART NO.	DESCRIPTION			QTY	REFERENCE DESIGNATIONS							
1	D-CS-5411554-0-1.	CIRCUIT SCHEMATIC			REF								
2	D-AH-5411554-0-5	ASSY/DRILLING HOLE LAYOUT			REF								
3	B-MH-5411554-0-6	MODULE ECO HISTORY			REF								
4	5011493	ETCHED CIRCUIT BOARD			1								
5	1000926-00	CAP 680 PF 100V 5% <i>DM</i>			2	C5, C7							
6	1001610-01	CAP .01UF 100V <i>CER</i>			5	C1, C3, C6, C9, C20							
7	1010274-00	CAP .22UF 50V <i>CER</i>			3	C4, C8, C2							
8	1105275-00	DIODE D672			44	D2-D15, D17, D19, D21, D23, D25, D27 D29, D31, D33, D35, D37, D39, D41, D43, D45, D47, D49, D51, D53, D55, D59 D61, D63, D65, D67, D69, D71, D73, D74 D75							
9	1109990-00	DIODE, ZENER 1N757A 9.1V 5%			1	D1							
10	7010918-3-0	DIODE NETWORK			2	D16, D18							
11	1910010-00	DIODE PACK 2501			24	D20, D22, D24, D26, D28, D30, D32, D34 D36, D38, D40, D42, D44, D46, D48, D50 D52, D54, D56, D58, D60, D62, D64, D66							
12	1300229-00	RES 100 1/4W 5%			3	R13, R15, R17							
13	1301775-00	RES 820 1/4W 5%			1	R1							
14	1304862-00	RES 1.62K 1/8W 1%			1	R4							
15	1302871-00	RES 1.21K 1/8W 1%			1	R3							
16	1304833-00	RES 1.96K 1/8W 1%			1	R12,							
TITLE 16K x 16, 18 MEMORY STACK				ASSY NO. D-UA-5411554-0-0		SIZE CODE A PL		NUMBER 5411554-0-0		REV. D		ECO NO. 00002	
				SHEET 1 OF 2		DIST.							

DEC FORM DEC 16-(325)-1031-N870
DRA

DIGITAL EQUIPMENT CORPORATION MAYNARD, MASSACHUSETTS PARTS LIST				QUANTITY/VARIATION										
MADE BY M. Poirier		CHECKED <i>[Signature]</i>												
DATE 7/7/75		DATE 7/7/75												
ENG <i>[Signature]</i>		PROD RA Hill 7/14/75		ISSUED SECT.										
DATE 7/14/75		DATE												
ITEM NO.	DWG NO. / PART NO.	DESCRIPTION		QTY	REFERENCE DESIGNATIONS									
17	1303045-00	RES 3.16K 1/4W 1%		1	R2									
18	1300479-00	RES 10K 1/4W 5%		1	R16									
19	1303312-00	RES 10K 1/8W 1%		1	R5									
20	1300316-00	RES 470 1/4W 5%		1	R11									
21	1303155-00	RES 21.5K 1/8W 1%		1	R6									
22	1302396-00	RES 150K 1/4W 5%		2	R8, R9									
23	1301781-00	RES 82 1/2W 5%		1	R56									
24	1300202-00	RES 47 1/4W 5%		2	R54, R55									
25	1300365-00	RES 1K 1/4W 5%		37	R18-R53, R7									
26	1310071-00	RES 1K 1% THERMISTER		1	R14									
27	1311742-00	RES NETWORK 220 1/4W 1%		6	R57-R62									
28	1503366-00	TRANS 2N3736		4	Q2-Q5									
29	1503409-01	TRANS 6534B		1	Q1									
30	1610662-00	INDUCTOR 100UH		2	L1, L2									
31	1910298-00	I.C. 72741		1	E1									
32	1910546-00	I.C. 74S140		1	E2									
33	1211727-00	CONTACT, MALE		179	J1-J179									
34	9009185-00	JUMPER, INSULATED (.4 LONG)		1	W5									
35	9107560-01	JUMPER, BUSS WIRE (#22 AWG)		4	W1-W4 (OPTIONAL)									
36	9006735-00	EYELET (SPLIT LUG)		4										
37	1305114-00	RES 3.48K 1/8W 1%		1	R10									
TITLE		ASSY NO.		SIZE	CODE	NUMBER				REV.	ECO NO.			
16K x 16, 18 MEMORY STACK		D-UA-5411554-0-0		A	PL	5411554-0-0				D				
		SHEET 2 OF 2		DIST.										

DEC FORM DEC 16-(325) 1031-N870
DRA