

DRAWING DIRECTORY

"THIS DRAWING AND SPECIFICATIONS, HEREIN, ARE THE PROPERTY OF DIGITAL EQUIPMENT CORPORATION AND SHALL NOT BE REPRODUCED OR COPIED OR USED IN WHOLE OR IN PART AS THE BASIS FOR THE MANUFACTURE OR SALE OF ITEMS WITHOUT WRITTEN PERMISSION. COPYRIGHT © 1975, DIGITAL EQUIPMENT CORPORATION"

CUSTOMER PRINT SET INDEX

SEQUENCE

861-E DRAWING DIRECTORY
861-E POWER CONTROL ASSY
861-E POWER CONTROL P.L.
PILOT CONTROL
861-E CIRCUIT SCHEMATIC

77 B-DD-861-E
E-UA-861-E-∅
A-PL-861-E-∅
E-CS-5411522-0-1
D-CS-861-E-1

SEQUENCE

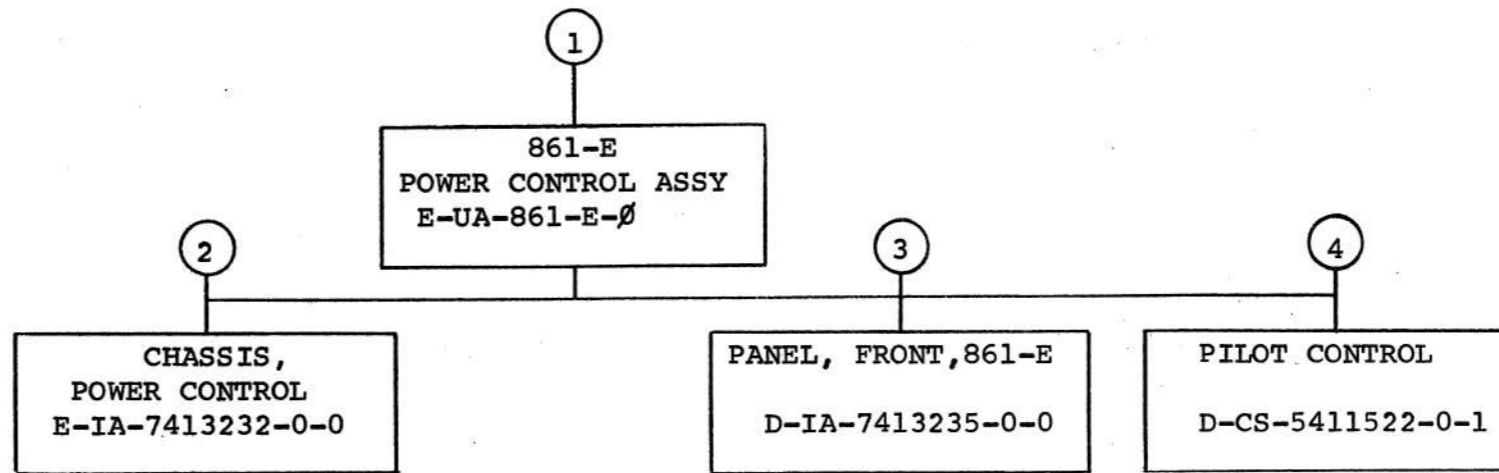
77

THIS IS PRINT SET

UNIT VARIATIONS		PRINT SET			
VAR	TITLE				
861-E	861-E POWER CONTROL	1	X		

DEC 16-13291-1062-1A-R972

REVISIONS		DATE	CHG. NO.	REV	USED ON OPTION/MODEL	DRN.	DATE	TITLE	SIZE	CODE	NUMBER	REV
						W. McCarthy	4/24/75					
						CHK'D.	DATE					
						McCarthy	4/30/75					
						PROJ. ENG.	DATE					
						Jim Dew	5/6/75					
						PROD.	DATE					
						Jim Borenstein	5/6/75					
						FIELD SERV.	DATE					
						Jim Borenstein	5/6/75					
						SHEET 1 OF 3						

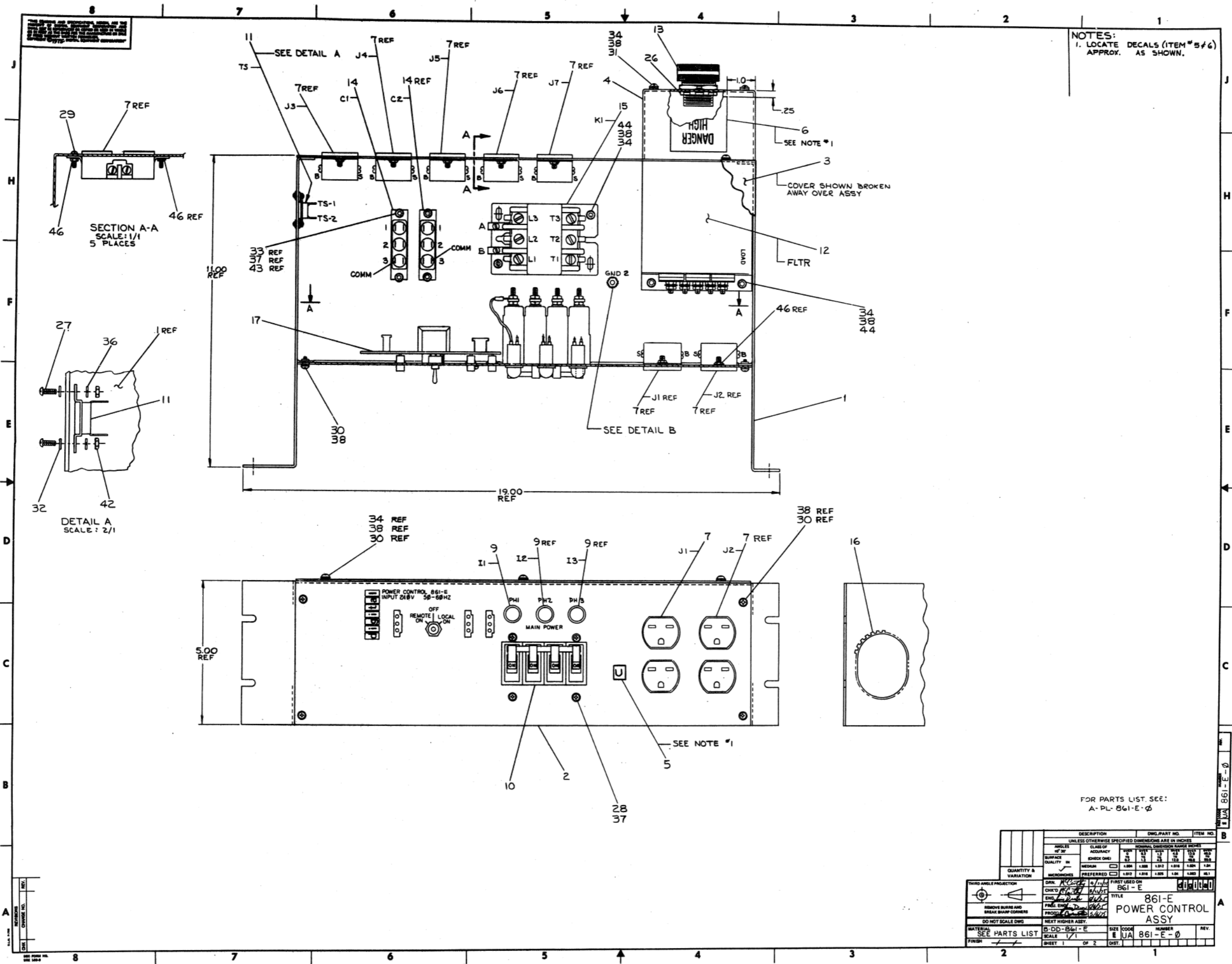


TITLE	SHEET 2 OF 3	SIZE CODE	NUMBER	REV
861-E POWER CONTROL		B DD	861-E	

CUSTOMER PRINT SET		MECHANICAL					CUSTOMER PRINT SET		ELECTRICAL						
1	MFG. SET	FIND NO.	DRAWING NO.	REV	NO OF SHT	DESCRIPTION	OPTION NO./FILE DATE	1	MFG. SET	FIND NO.	DRAWING NO.	REV	NO OF SHT	DESCRIPTION	OPTION NO./FILE DATE
X		1	E-UA-861-E-Ø	*	2	861-E POWER CONTROL ASSY		X		1	B-DD-861-E	*	3	861-E POWER CONTROL	
X			A-PL-861-E-Ø	*	3	861-E POWER CONTROL ASSY P.L.		X			D-CS-861-E-1	*	1	861-E POWER CONTROL SCHEMATIC	
			C-MD-7413234-0-0		1	COVER, POWER CONTROL					A-SP-861-E-2		4	TEST PROCEDURE 861-E	
			D-MD-7413419-0-0		1	BRACKET, STRAIN RELIEF									
			C-IA-7011052-0-0		1	MOV ASSY									
			C-IA-7011053-0-0		1	PILOT LAMP ASSY									
			D-IA-7010938-0-0		1	HARNESS #2, POWER CONTROL									
			D-IA-7010936-0-0		1	HARNESS #4, POWER CONTROL									
			D-IA-7010971-0-0		1	HARNESS #7, POWER CONTROL									
			C-IA-7010968-0-0		1	HARNESS #8, POWER CONTROL									
			D-IA-7010972-0-0		1	JUMPER, WIRE		X		4	D-CS-5411522-0-1	*	1	PILOT CONTROL	
		2	E-IA-7413232-0-0		2	CHASSIS, POWER CONTROL									
			B-SS-7413232-0-1		1	SILK SCREEN, CHASSIS									
		3	D-IA-7413235-0-0		2	PANEL, FRONT, 861-E									
			B-SS-7413235-0-1		1	SILK SCREEN, FRONT PANEL, 861-E									

CUSTOMER PRINT SET CODES
X = PRINT OF DOCUMENT INCLUDED IN PRINT SET
C = INCLUDES ALL PRINTS INDICATED ON DOCUMENT
S = CONFIDENTIAL AUTHORIZED SIGNATURE REQUIRED

TITLE: 861-E POWER CONTROL
SHEET 3 OF 3
SIZE CODE: B DD
NUMBER: 861-E
REV:



NOTES:
 1. LOCATE DECALS (ITEM #5/6) APPROX. AS SHOWN.

SECTION A-A
 SCALE: 1/1
 5 PLACES

DETAIL A
 SCALE: 2/1

38 REF
 30 REF

34 REF
 38 REF
 30 REF

SEE NOTE #1

FOR PARTS LIST SEE:
 A-PL-861-E-Ø

DESCRIPTION		QTY	PART NO.	ITEM NO.
UNLESS OTHERWISE SPECIFIED DIMENSIONS ARE IN INCHES				
ANGLE	CLASS OF	FINISH	FINISH	FINISH
OF 2"	ACCURACY	FINISH	FINISH	FINISH
SURFACE	FINISH	FINISH	FINISH	FINISH
QUALITY	FINISH	FINISH	FINISH	FINISH
QUANTITY & VARIATION	FINISH	FINISH	FINISH	FINISH
THIRD ANGLE PROJECTION	FINISH	FINISH	FINISH	FINISH
REMOVE BURRS AND BREAK SHARP CORNERS	FINISH	FINISH	FINISH	FINISH
DO NOT SCALE DIMS	FINISH	FINISH	FINISH	FINISH
MATERIAL	FINISH	FINISH	FINISH	FINISH
SEE PARTS LIST	FINISH	FINISH	FINISH	FINISH
FINISH	FINISH	FINISH	FINISH	FINISH

TITLE
 861-E
 POWER CONTROL ASSY

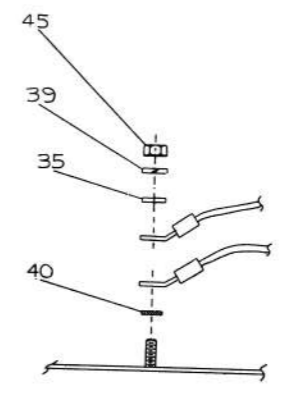
SCALE 1/1
 SHEET 1 OF 2

A-PL-861-E-Ø

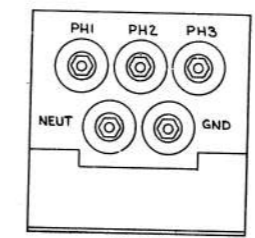
ITEM NO.	DESCRIPTION	FROM		TO		REMARKS
		COLOR	AWG	CONNECTION	WITH	
18	BLU	10	HARNESS 2-1	-2	KI-T3	
	RED			-3	KI-T2	
	BLK			-4	KI-T1	
	RED			-4	CBI-D-LOAD	
	BLU	10	HARNESS 2-4	-4	CBI-C-LOAD	
	GRN	18	HARNESS 4-1	-4	CBI-B-LOAD	
	WHT	10		-7	PLT CONT-J7	
	BLU	10		-2	CBI-A-LINE	
	RED			-3	CBI-B-LINE	
	BLK			-4	CBI-C-LINE	
19	GRN			-5	CBI-D-LINE	
	BLK			-6	GND 1	
	WHT			-7	FLTR-PH1	
	BLU			-8	FLTR-NEUT	
	RED			-9	FLTR-PH3	
	GRN	10		-10	FLTR-PH2	
	GRN	18	HARNESS 4-11	-10	FLTR-GND	
	BLU	14	HARNESS 7-1	-11	GND 1	
	WHT			-2	J3-B	
	BLU			-2	J3-S	
20	WHT			-3	J4-B	
	RED			-4	J4-S	
	BLU			-5	J5-B	
	BLU			-6	J5-S	
	BLU			-7	KI-L3	
	WHT			-8		
	RED			-9	J5-S	
	WHT			-10	J6-B	
	WHT			-11	J6-S	
	BLK			-12	J7-S	
RED			-13	J7-B		
RED			-14			
RED			-15	KI-L2		
BLK			-16			
BLK			-17	KI-L1		
BLK			-18			
WHT			-19	C1-2		
WHT			-20	C2-3		
WHT			-21/22			
WHT			-23/24	CBI-A-LOAD		
WHT			-25/24			
WHT			-27/28			
BLU			-29	CBI-B-LOAD		
RED			-30	CBI-C-LOAD		
BLK			-31	CBI-D-LOAD		
BLK			-32	J1-B		
WHT			-33	J1-S		
WHT			-34	CBI-A-LOAD		
			-J1	PLT CONT-J5		
			-J2	PLT CONT-J6		
RED			-39	KI-A		
RED			-40	KI-B		
RED			-41	C2-1		
BLU	14	HARNESS 7-42	-42	C1-1		
9	BLK	22	I1-BLK		CBI-A-LINE	
9	RED	22	I1-RED		CBI-D-LINE	
9	BLK	22	I2-BLK		CBI-A-LINE	
9	RED	22	I2-RED		CBI-C-LINE	
9	BLK	22	I3-BLK		CBI-A-LINE	
9	RED	22	I3-RED		CBI-B-LINE	

ITEM NO.	DESCRIPTION	FROM		TO		REMARKS
		COLOR	AWG	CONNECTION	WITH	
21	WHT	14	HARNESS 8-PI		PLT CONT-J4	
	WHT	14	HARNESS 8-3		TS-1	
22	GRN	10	HARNESS 8-4		TS-2	
23	WHT	14	GND 1		GND 2	
24	WHT	14	C1-3		C2-3	
25	BLK	14	J1-S		J2-S	
8			J1-B	41	J2-B	41
			KI-A	41	KI-B	41

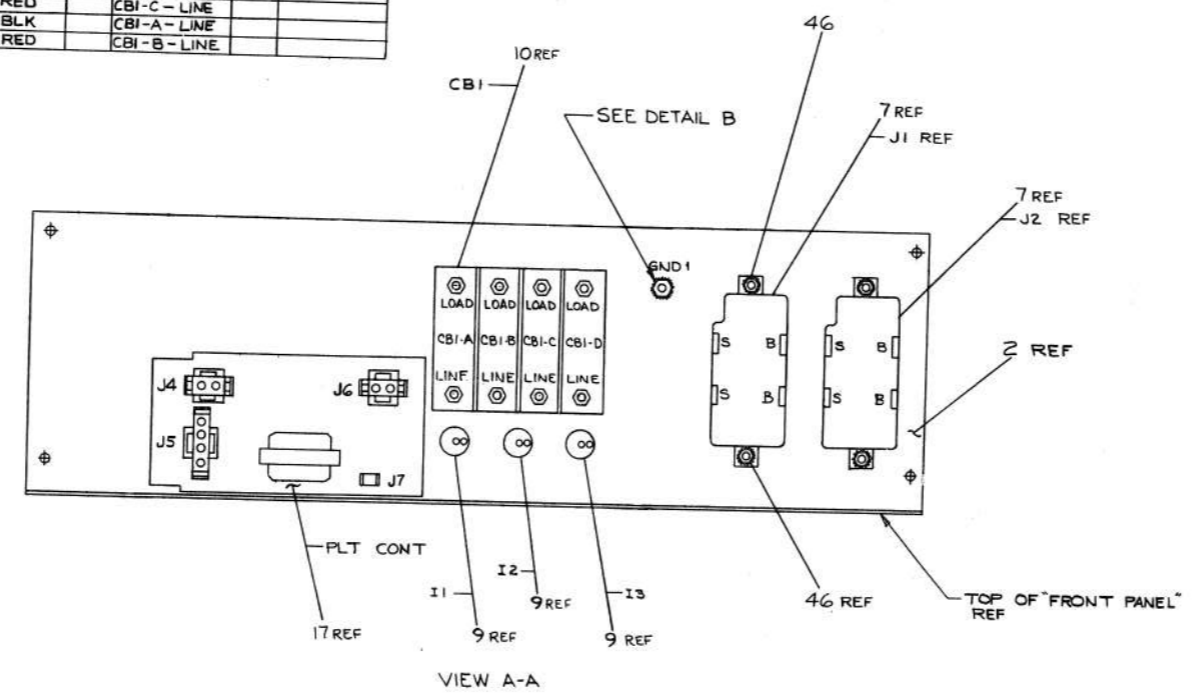
NOTES FOR WIRING:
1. FOR HARNESS POINT NUMBERS, REFER TO HARNESS DWG.



DETAIL B
TYPICAL FOR "GND 1" & "GND 2"



FILTER
(ITEM 12)
LOAD SIDE



VIEW A-A

QUANTITY & VARIATION		DESCRIPTION		DIM. PART NO.		ITEM NO.	
APPROX. QTY	CLASS OF ACCURACY	DESCRIPTION	DIM. PART NO.	ITEM NO.	REV.	DATE	BY
1	ASSEMBLY	POWER CONTROL ASSY	861-E	861-E	1		
1	ASSEMBLY	PLT CONT	PLT CONT				
1	ASSEMBLY	FILTER	861-E-0				

861-E-0
861-E-0

DIGITAL EQUIPMENT CORPORATION MAYNARD, MASSACHUSETTS PARTS LIST					QUANTITY / VARIATION															
MADE BY W. McCarthy		CHECKED <i>McCarthy</i>		SECTION																
DATE 4/18/75		DATE 4/29/75		1																
ENG <i>Jim Drew</i>		PROD <i>J. Borner</i>		ISSUED SECT.																
DATE 5/6/75		DATE 5/6/75		1																
ITEM NO.	DWG NO. / PART NO.	DESCRIPTION																		
1	E-IA-7413232-0-0	CHASSIS, POWER CONTROL			1															
2	D-IA-7413235-0-0	PANEL, FRONT, 861-E			1															
3	C-MD-7413234-0-0	COVER, POWER CONTROL			1															
4	D-MD-7413419-0-0	BRACKET, STRAIN RELIEF			1															
5	3612063-00	DECAL, UL			1															
6	3610267-00	DECAL, "DANGER HIGH VOLTAGE"			1															
7	1211204-01	POWER CONN RECEPTACLE, 24Ø VAC			7															
8	C-IA-7011052-0-0	MOV ASSY			1															
9	C-IA-7011053-1-0	PILOT LAMP ASSY, 24ØV			3															
10	1212321-00	CIRCUIT BREAKER, 15A, 24ØVAC			1															
11	1211158-00	THERMOSTAT, SPST, FIXED TEMP.			1															
12	1212320-00	FILTER			1															
13	1212410-00	STRAIN RELIEF			1															
14	1000034-00	DC PAPER CAPACITOR, 1ØØØ VDC			2															
15	1212266-00	CONTACTOR, 3 POLE, 4Ø A, 6ØØ VAC			1															
16	9007035-00	GROMMET, CATERPILLAR			A/R															
17	D-CS-5411522-0-1	PILOT CONTROL			1															
18	D-IA-7010938-0-0	HARNESS #2, POWER CONTROL			1															
19	D-IA-7010936-0-0	HARNESS #4, POWER CONTROL			1															
20	D-IA-7010971-0-0	HARNESS #7, POWER CONTROL			1															
21	C-IA-7010968-0-0	HARNESS #8, POWER CONTROL			1															
22	D-IA-7010972-0-0	JUMPER, WIRE (GRN, #10 AWG)			1															
TITLE		ASSY NO.		SIZE	CODE	NUMBER				REV.	ECO NO.									
861-E POWER CONTROL ASSY		E-UA-861-E-Ø		A	PL	861-E-Ø														
		SHEET 1 OF 3		DIST.																

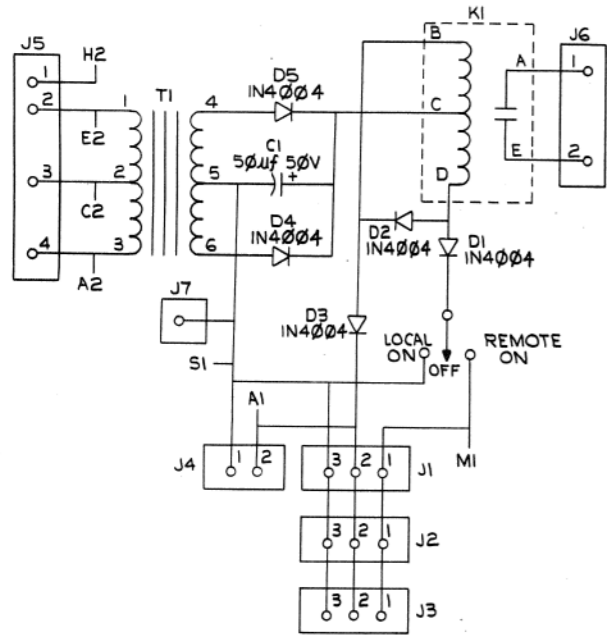
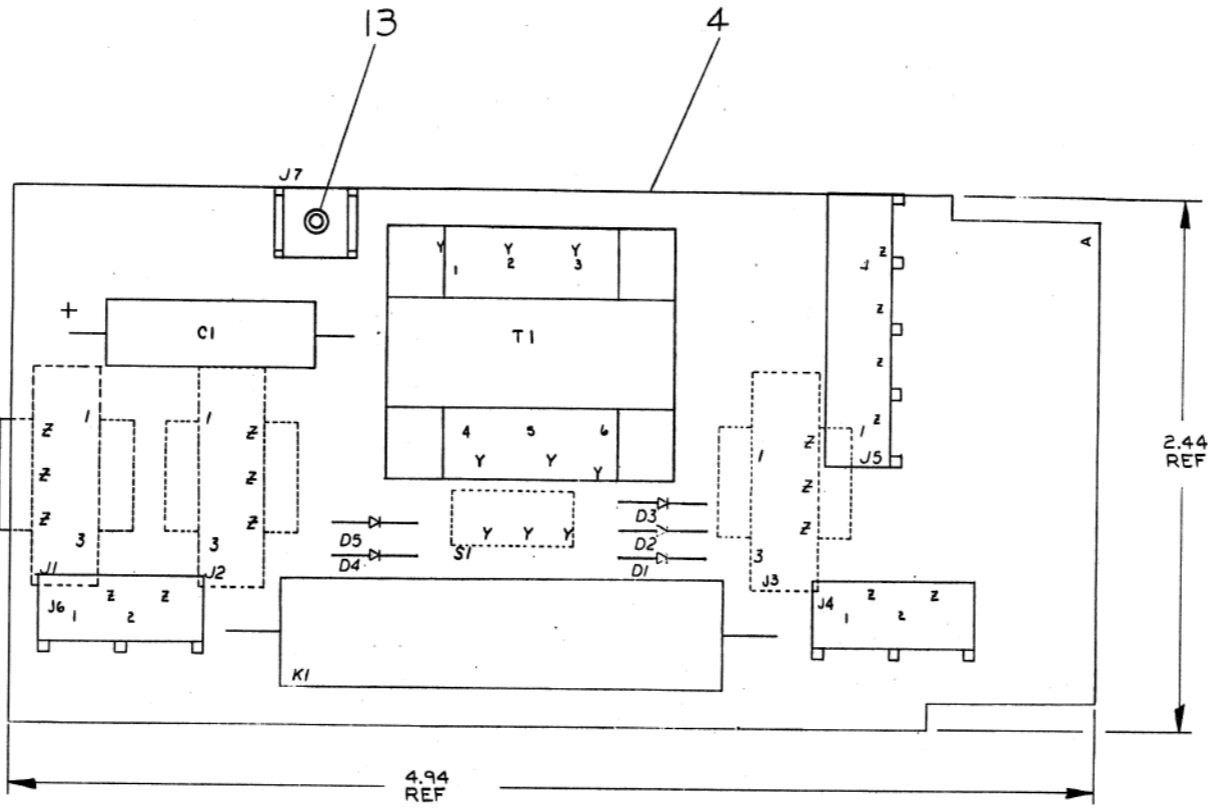
DEC FORM DEC 16-(325)-1031-N870
DRA 110

DIGITAL EQUIPMENT CORPORATION MAYNARD, MASSACHUSETTS PARTS LIST					QUANTITY / VARIATION															
MADE BY W. McCarthy		CHECKED <i>McCarthy</i>		SECTION																
DATE 4/18/75		DATE 4/29/75		1																
ENG <i>Jim Drew</i>		PROD <i>J. Borner</i>		ISSUED SECT.																
DATE 5/6/75		DATE 5/6/75		1																
ITEM NO.	DWG NO. / PART NO.	DESCRIPTION																		
23	D-IA-7010972-1-0	JUMPER, WIRE (WHT, #14 AWG)			1															
24	D-IA-7010972-2-0	JUMPER, WIRE (WHT, #14 AWG)			1															
25	D-IA-7010972-4-0	JUMPER, WIRE (BLK, #14 AWG)			1															
26	9009309-00	LOCKNUT, .5" PIPE THD			1															
27	9006010-01	SCR, PHL PAN HD, #4-40 x .31 LG			2															
28	9006020-01	SCR, PHL PAN HD, #6-32 x .25 LG			4															
29	9006021-01	SCR, PHL PAN HD, #6-32 x .31 LG			5															
30	9006037-01	SCR, PHL PAN HD, #8-32 x .38 LG			10															
31	9006051-01	SCR, PHL PAN HD, #8-32 x 3.00 LG			2															
32	9006655-00	WASHER, FLAT, #4			2															
33	9006653-00	WASHER, FLAT, #6			6															
34	9006660-00	WASHER, FLAT, #8			10															
35	9006664-00	WASHER, FLAT, #10			2															
36	9006688-00	WASHER, SPLIT LOCK, #4			2															
37	9007801-00	WASHER, SPLIT LOCK, #6			10															
38	9006690-00	WASHER, SPLIT LOCK, #8			14															
39	9007906-00	WASHER, SPLIT LOCK, #10			2															
40	9007651-00	WASHER, EXT TOOTH LOCK, #10			2															
41	9006633-00	WASHER, INT TOOTH LOCK, #6			2															
42	9006556-00	NUT, HEX, #4-40			2															
43	9006558-00	NUT, HEX, #6-32			4															
44	9006561-00	NUT, HEX, #8-32			4															
TITLE		ASSY NO.		SIZE	CODE	NUMBER				REV.	ECO NO.									
861-E POWER CONTROL ASSY		E-UA-861-E-Ø		A	PL	861-E-Ø														
		SHEET 2 OF 3		DIST.																

DEC FORM DEC 16-(325)-1031-N870
DRA 110

THIS DRAWING AND SPECIFICATIONS HEREIN ARE THE PROPERTY OF DIGITAL EQUIPMENT CORPORATION AND SHALL NOT BE REPRODUCED OR COPIED OR USED IN WHOLE OR IN PART AS THE BASIS FOR THE MANUFACTURE OR SALE OF ITEMS WITHOUT WRITTEN PERMISSION. COPYRIGHT © 1975, DIGITAL EQUIPMENT CORPORATION.

NOTES:



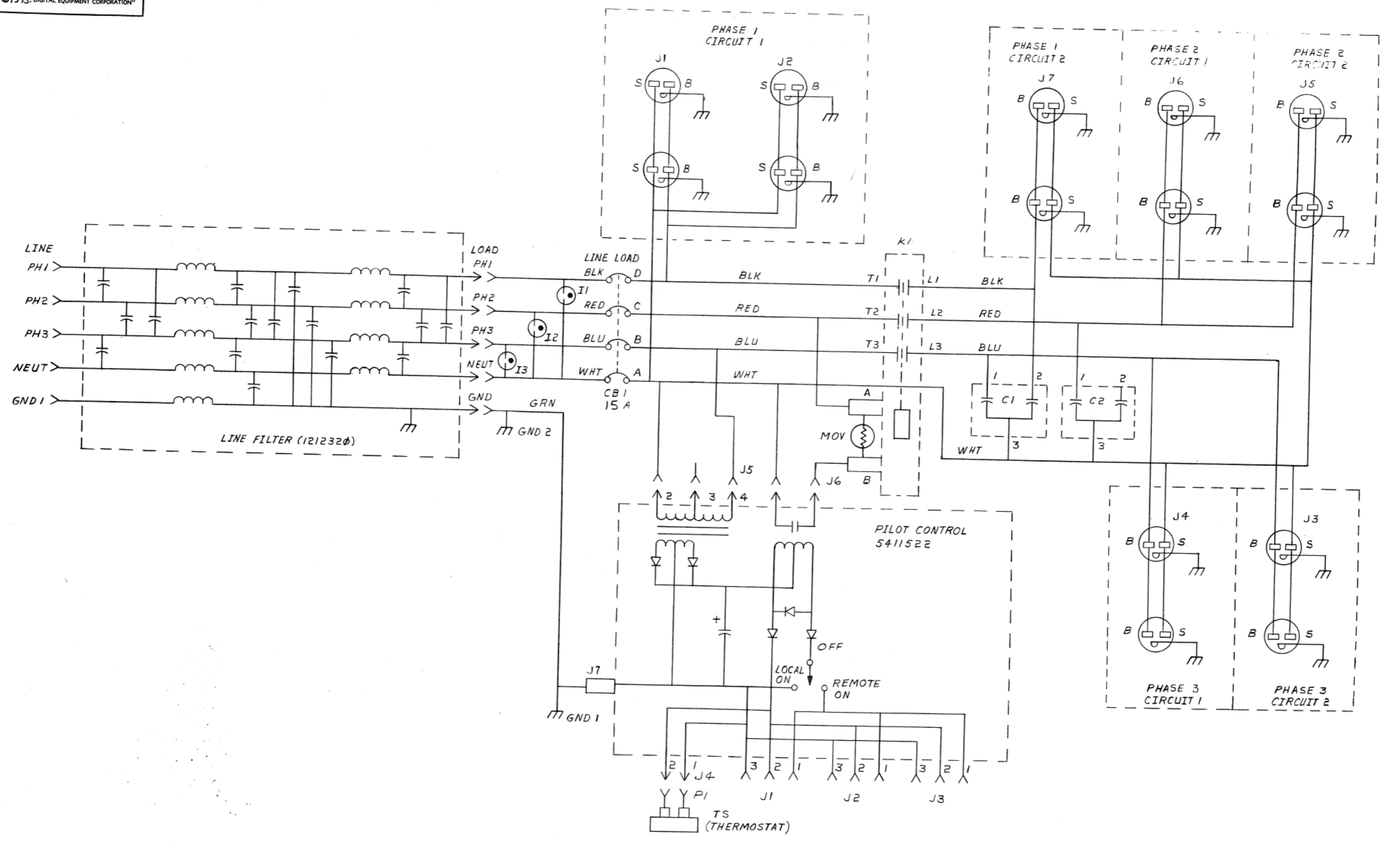
REF	X-Y COORDINATE HOLE LOCATION	K-CO-5411522-0-4	1	
REF	ASSY/DRILLING HOLE LAYOUT	D-AH-5411522-0-5	2	
REF	MODULE ECO HISTORY	B-MH-5411522-0-6	3	
1	ETCHED CIRCUIT BOARD	5011521	4	
1	KI	RELAY, REED, 48 V COIL, 2.5 A CONT.	1212267-00	5
1	T1	TRANSFORMER MMC 5415	1612342-00	6
1	C1	CAP 50 MFD 50V TANT	1000080-00	7
5	D1-D5	DIODE IN4004	1105796-00	8
1	S1	SWITCH	1211180-00	9
3	J1-J3	HOUSING, SOCKET	1209350-03	10
1	J5	CONN, UNIVERSAL, 4 PIN HEADER	1212297-01	11
2	J4, J6	CONN, UNIVERSAL, 2 PIN HEADER	1212297-00	12
1		EYELET	9006732-00	13
9		TERMINAL, SOCKET CONTACT	1209456-01	14
1	J7	TERMINAL, SOLDERLESS	9007113-00	15

IC TYPE	GND	+ 5V

GND AND 5V ARE USUALLY PIN 7 AND 14 RESPECTIVELY. EXCEPTIONS ARE STATED ABOVE.
IC PIN LOCATIONS

QTY		REF DESIGNATION	DESCRIPTION	PART NO.	ITEM NO.
PARTS LIST					
FIRST USED ON OPTION MODEL		ETCH BOARD REV B			
861-D / 861-E					
DRN	DATE	digital		EQUIPMENT CORPORATION	
CHKD	DATE	TITLE		PILOT CONTROL	
ENG	DATE	NEXT HIGHER ASSY		E-UA-861-D-0	
PROJ. ENG.	DATE	SCALE	NONE	SIZE CODE	D CS #411522-0-1
PROD.	DATE	SCALE	NONE	NUMBER	
		SHEET	1 OF 1	REV.	A
SEMICONDUCTOR CONVERSION CHART					
DEC NO.	EIA NO.	DEC NO.	EIA NO.		

"THIS DRAWING AND SPECIFICATIONS, HEREIN, ARE THE PROPERTY OF DIGITAL EQUIPMENT CORPORATION AND SHALL NOT BE REPRODUCED OR COPIED OR USED IN WHOLE OR IN PART AS THE BASIS FOR THE MANUFACTURE OR SALE OF ITEMS WITHOUT WRITTEN PERMISSION. COPYRIGHT © 1975, DIGITAL EQUIPMENT CORPORATION"



REV.	
CHANGE NO.	
CHK	

DRN. Silvia	5-875	FIRST USED ON	861-E	digital
CHK'D by Man	5/9/75	TITLE	POWER CONTROL, 861-E	
ENG. [Signature]	[Signature]	NEXT HIGHER ASSY.		
PROD. [Signature]	[Signature]	B-DD-861-E	SIZE CODE	NUMBER
		SCALE	D CS	861-E-1
		SHEET	1	OF 1