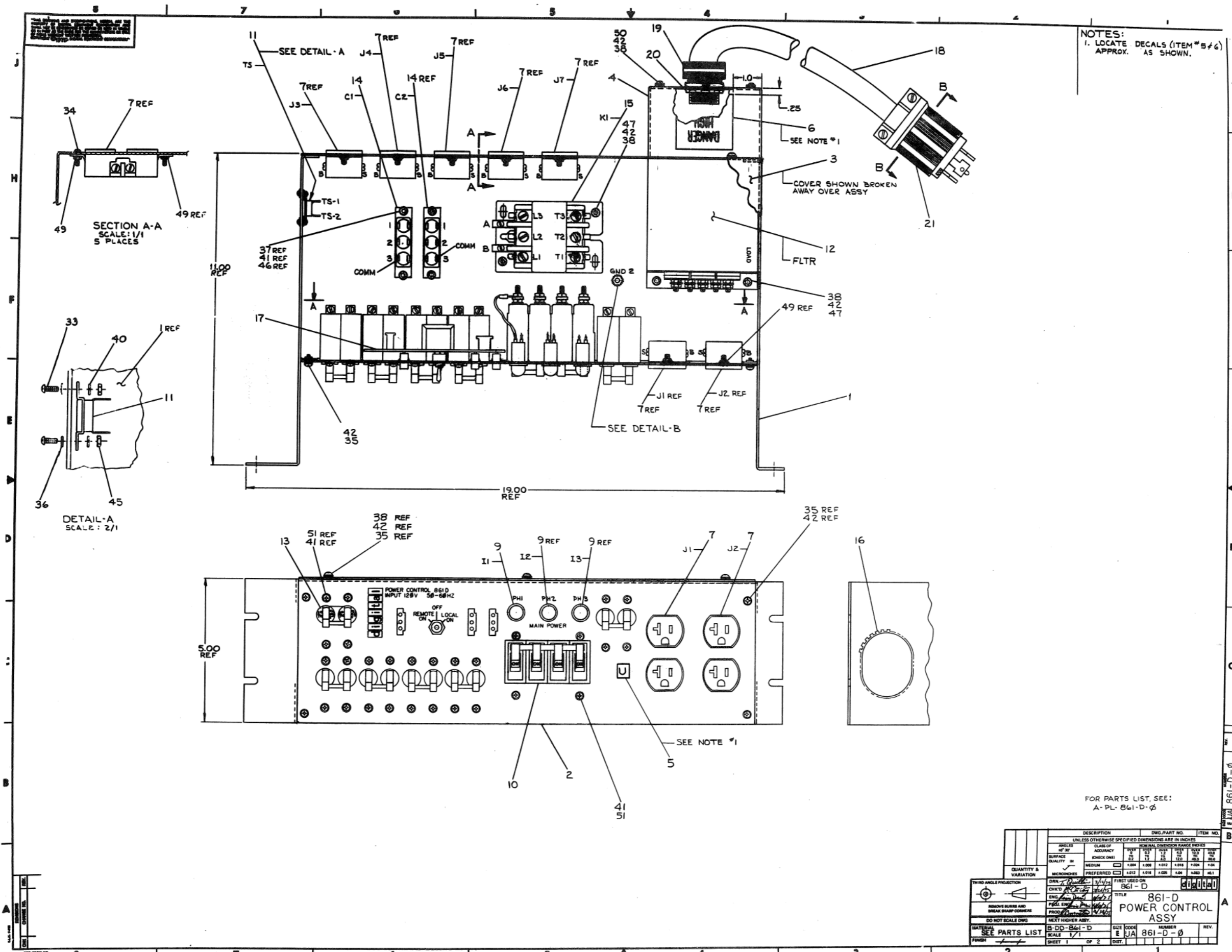


TITLE	SHEET	OF	SIZE	CODE	NUMBER	REV
861-D POWER CONTROL	2	3	B	DD	861-D	

CUSTOMER PRINT SET		MECHANICAL					CUSTOMER PRINT SET		ELECTRICAL								
		MFG. SET	FIND NO.	DRAWING NO.	REV	NO OF SHT	DESCRIPTION	OPTION NO./FILE DATE			MFG. SET	FIND NO.	DRAWING NO.	REV	NO OF SHT	DESCRIPTION	OPTION NO./FILE DATE
X			1	E-UA-861-D-0	*	2	861-D POWER CONTROL ASSY		X			1	B-DD-861-D	*	2	861-D POWER CONTROL ASSY	
X				A-PL-861-D-0	*	3	861-D POWER CONTROL ASSY P.L.		X				D-CS-861-D-1	*	1	861-D POWER CONTROL SCHEMATIC	
				C-MD-7413234-0-0		1	COVER, POWER CONTROL										
				D-MD-7413419-0-0		1	BRACKET, STRAIN RELIEF										
				C-IA-7011052-0-0		1	MOV ASSY										
				C-IA-7011053-0-0		1	PILOT LAMP ASSY										
				D-IA-7010966-0-0		1	HARNESS #1, POWER CONTROL										
				D-IA-7010967-0-0		1	HARNESS #3, POWER CONTROL										
				D-IA-7010969-0-0		1	HARNESS #5, POWER CONTROL										
				D-IA-7010970-0-0		1	HARNESS #6, POWER CONTROL										
				C-IA-7010968-0-0		1	HARNESS #8, POWER CONTROL		X								
				D-IA-7010972-0-0		1	JUMPER, WIRE					4	D-CS-5411522-0-1	*	1	PILOT CONTROL	
			2	E-IA-7413232-0-0		2	CHASSIS, POWER CONTROL										
				B-SS-7413232-0-1		1	SILK SCREEN, CHASSIS										
			3	D-IA-7413233-0-0		2	PANEL, FRONT, 861-D										
				B-SS-7413233-0-1		1	SILK SCREEN, FRONT PANEL, 861-D										

CUSTOMER PRINT SET CODES
X = PRINT OF DOCUMENT INCLUDED IN PRINT SET
C = INCLUDES ALL PRINTS INDICATED ON DOCUMENT
S = CONFIDENTIAL AUTHORIZED SIGNATURE REQUIRED

TITLE
861-D POWER CONTROL
SHEET 3 OF 3
SIZE CODE B DD
NUMBER 861-D
REV



NOTES:
 1. LOCATE DECALS (ITEM # 5+6)
 APPROX. AS SHOWN.

SECTION A-A
 SCALE: 1/1
 5 PLACES

DETAIL-A
 SCALE: 2/1

COVER SHOWN BROKEN AWAY OVER ASSY

SEE DETAIL-B

SEE NOTE #1

FOR PARTS LIST, SEE:
 A-PL-861-D-φ

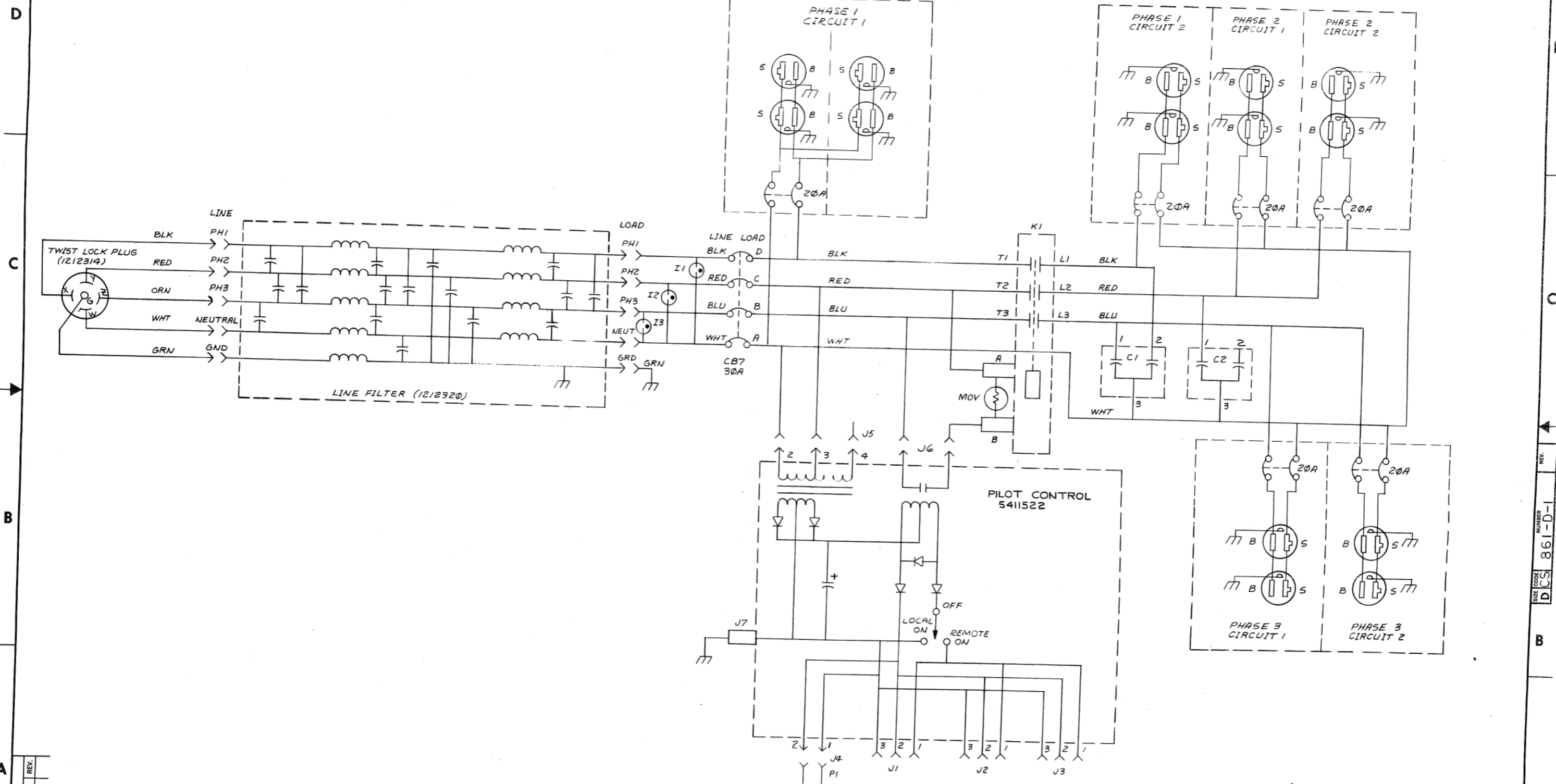
DESCRIPTION		DWG. PART NO.	ITEM NO.
UNLESS OTHERWISE SPECIFIED DIMENSIONS ARE IN INCHES			
ANGLE	CLASS OF ACCURACY	TYPICAL DIMENSION RANGE INCHES	
UP TO 30°	AS CHECKED	0.00	0.00
SURFACE	FINISH	0.00	0.00
QUALITY	IN	0.00	0.00
QUANTITY & VARIATION	AS SHOWN	0.00	0.00
THIRD ANGLE PROJECTION	AS SHOWN	0.00	0.00
SHOWS DIMS AND BREAK SHARP CORNERS	AS SHOWN	0.00	0.00
DO NOT SCALE DIMS	AS SHOWN	0.00	0.00
MATERIAL SEE PARTS LIST	SEE PARTS LIST	SEE PARTS LIST	SEE PARTS LIST
FINISH	AS SHOWN	0.00	0.00

REV.	DESCRIPTION	DATE	BY	CHKD.
1	861-D POWER CONTROL ASSY			

861-D	861-D	861-D	861-D	861-D
861-D	861-D	861-D	861-D	861-D
861-D	861-D	861-D	861-D	861-D
861-D	861-D	861-D	861-D	861-D
861-D	861-D	861-D	861-D	861-D

"THIS DRAWING AND SPECIFICATIONS, HEREIN, ARE THE PROPERTY OF DIGITAL EQUIPMENT CORPORATION AND SHALL NOT BE REPRODUCED OR COPIED OR USED IN WHOLE OR IN PART AS THE BASIS FOR THE MANUFACTURE OR SALE OF ITEMS WITHOUT WRITTEN PERMISSION. COPYRIGHT © 1975, DIGITAL EQUIPMENT CORPORATION"

REV. NUMBER 1-D-198 DCS 861-D-1 2



REVISIONS	REV.
CHANGE NO.	
CHK	

DRN. <i>W. H. ...</i>	4/20/75	FIRST USED ON	861-D	digital
CHK'D. <i>W. H. ...</i>	4/20/75	TITLE	POWER CONTROL, 861-D	
ENG. <i>W. H. ...</i>	5/21/75	SCALE	1	
PROJ. ENG. <i>W. H. ...</i>	5/21/75	SHEET	1	OF 1
PROD. <i>W. H. ...</i>	5/21/75	DIST.		
NEXT HIGHER ASSY.		SIZE	DD	861-D
		CODE	DCS	861-D-1
		NUMBER		
		REV.		

DIGITAL EQUIPMENT CORPORATION
MAYNARD, MASSACHUSETTS

PARTS LIST

MADE BY Tyrone Quillin
DATE 3/11/75
ENG Jim Dwyer
DATE 4/11/75
CHECKED M. Carthy
DATE 4/9/75
PROD Jim Connerth
DATE 4/11/75
SECTION 1
ISSUED SECT. 1

ITEM NO.	DWG NO. / PART NO.	DESCRIPTION	QUANTITY / VARIATION
1	E-IA-7413232-0-0	CHASSIS, POWER CONTROL	1
2	D-IA-7413233-0-0	PANEL, FRONT, 861-D	1
3	C-MD-7413234-0-0	COVER, POWER CONTROL	1
4	D-MD-7413419-0-0	BRACKET, STRAIN RELIEF	1
5	3612063-00	DECAL, UL	1
6	3610267-0-0	DECAL, "DANGER HIGH VOLTAGE"	1
7	1212265-00	POWER CONN RECEPTACLE, 2ØA, 225VAC	7
8	C-IA-7011052-0-0	MOV ASSY	1
9	C-IA-7011053-0-0	PILOT LAMP ASSY	3
10	1211037-02	CIRCUIT BREAKER, 4 POL, 3ØA, 24Ø VAC	1
11	1211158-00	THERMOSTAT, SPST, FIXED TEMP	1
12	1212320-00	FILTER	1
13	1212124-01	CIRCUIT BREAKER, 2 POLE, 2Ø AMP	6
14	1000034-00	DC PAPER CAPACITOR, 1ØØØ VDC	2
15	1212266-00	CONTACTOR, 3 POLE, 4ØA, 6ØØ VAC	1
16	9007035-00	GROMMET, CATERPILLAR	A/R
17	D-CS-5411522-0-1	PILOT CONTROL	1
18	1700028-00	POWER CORD, 5 WIRE, 1Ø AWG, (15FT)	A/R
19	1212410-00	STRAIN RELIEF	1
20	9009309-00	LOCKNUT, 1/2" PIPE THREAD	1
21	1212314-00	PLUG, TWIST LOCK, 4 POLE/5 WIRE	1
22	D-IA-7010966-0-0	HARNESS #1, POWER CONTROL	1

TITLE
861-D POWER CONTROL ASSY
ASSY NO.
E-UA-861-D-Ø
SHEET 1 OF 3
SIZE CODE
A PL
NUMBER
861-D-Ø
REV.
ECO NO.

DEC FORM DEC 16-(325)-1031-N870
DRA 110

DIGITAL EQUIPMENT CORPORATION
MAYNARD, MASSACHUSETTS

PARTS LIST

MADE BY Tyrone Quillin
DATE 3/11/75
ENG Jim Dwyer
DATE 4/11/75
CHECKED M. Carthy
DATE 4/9/75
PROD Jim Connerth
DATE 4/11/75
SECTION 1
ISSUED SECT. 1

ITEM NO.	DWG NO. / PART NO.	DESCRIPTION	QUANTITY / VARIATION
23	D-IA-7010967-0-0	HARNESS #3, POWER CONTROL	1
24	D-IA-7010969-0-0	HARNESS #5, POWER CONTROL	1
25	D-IA-7010970-0-0	HARNESS #6, POWER CONTROL	1
26	C-IA-7010968-0-0	HARNESS #8, POWER CONTROL	1
27		LOCK, COIL SPRING	
28	D-IA-7010972-0-0	JUMPER, WIRE (GRN #10-AWG)	1
29	D-IA-7010972-1-0	JUMPER, WIRE (WHT, #14AWG)	1
30	D-IA-7010972-2-0	JUMPER, WIRE (WHT, #14AWG)	2
31	D-IA-7010972-3-0	JUMPER, WIRE (GRN, #14AWG)	1
32	D-IA-7010972-4-0	JUMPER, WIRE (BLK, #14AWG)	2
33	9006010-01	SCR, PHL PAN HD, #4-40 x .31 LG	2
34	9006021-01	SCR, PHL PAN HD, #6-32 x .31 LG	5
35	9006037-01	SCR, PHL PAN HD, #8-32 x .38 LG	10
36	9006655-00	WASHER, FLAT, #4	2
37	9006653-00	WASHER, FLAT, #6	4
38	9006660-00	WASHER, FLAT, #8	12
39	9006664-00	WASHER, FLAT, #10	2
40	9006688-00	WASHER, SPLIT LOCK, #4	2
41	9007801-00	WASHER, SPLIT LOCK, #6	32
42	9006690-00	WASHER, SPLIT LOCK, #8	16
43	9007906-00	WASHER, SPLIT LOCK, #10	2
44	9007651-00	WASHER, EXT TOOTH LOCK, #10	2

TITLE
861-D POWER CONTROL ASSY
ASSY NO.
E-UA-861-D-Ø
SHEET 2 OF 3
SIZE CODE
A PL
NUMBER
861-D-Ø
REV.
ECO NO.

DEC FORM DEC 16-(325)-1031-N870
DRA 110

