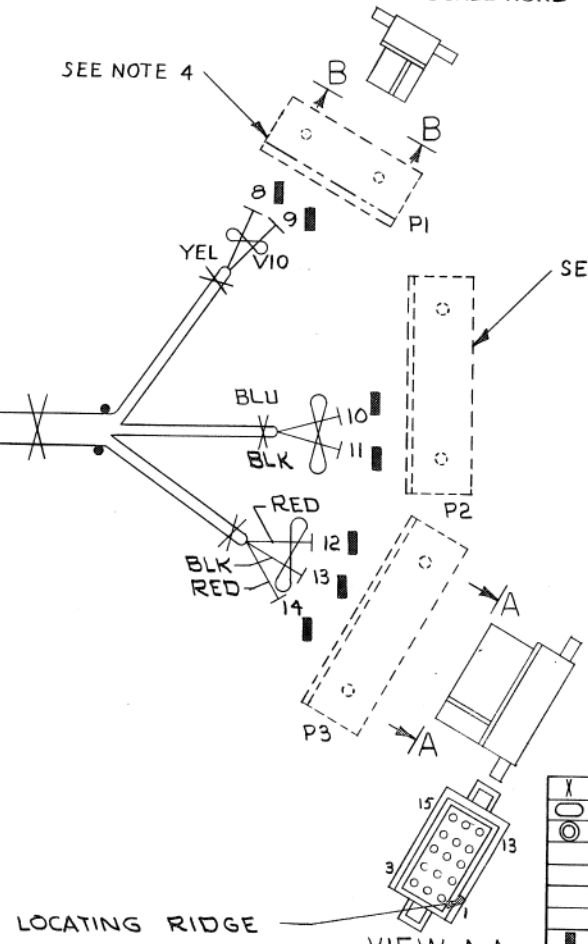
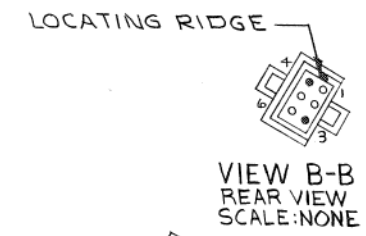
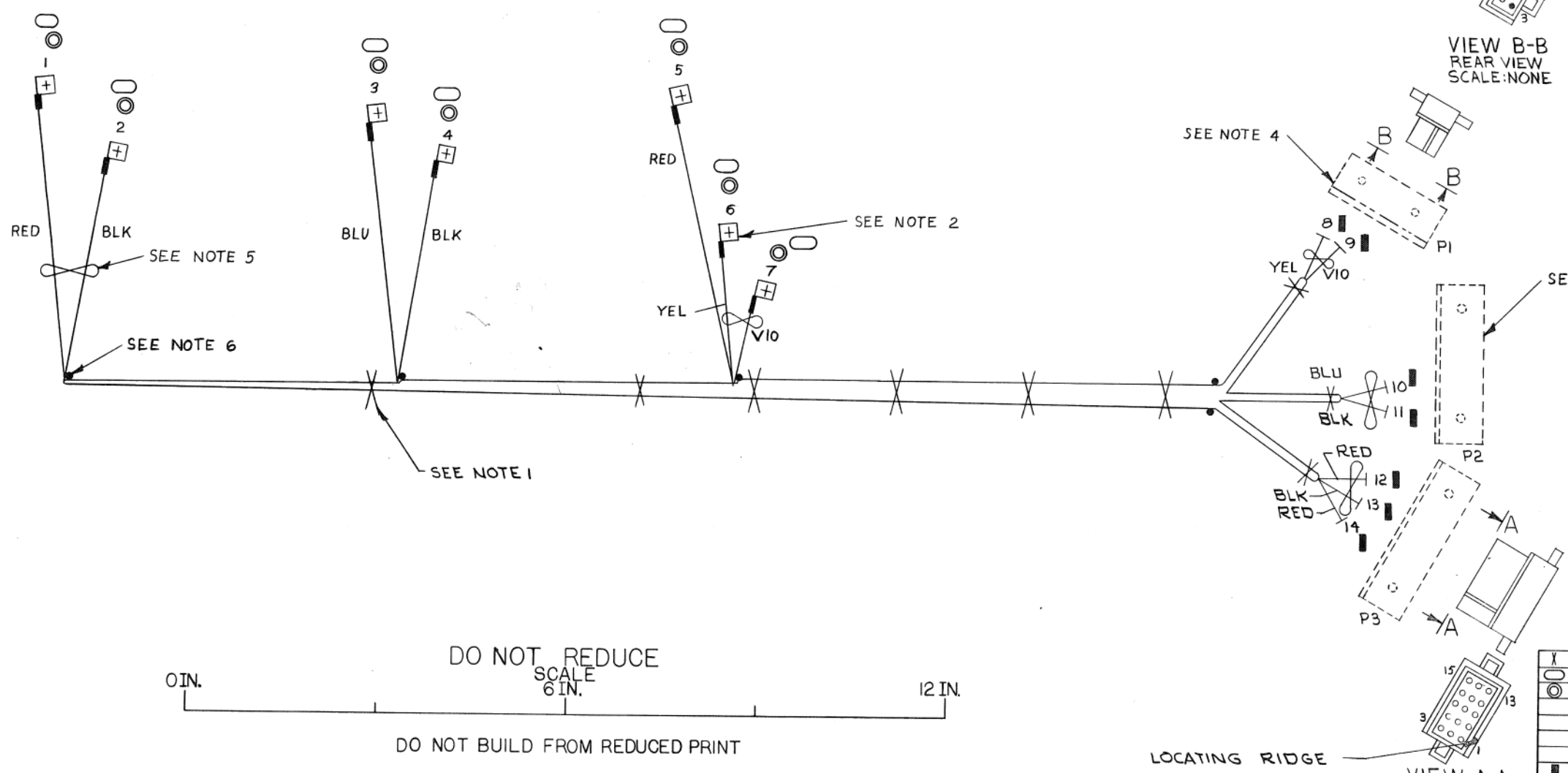


"THIS DRAWING AND SPECIFICATIONS, HEREIN, ARE THE PROPERTY OF DIGITAL EQUIPMENT CORPORATION AND SHALL NOT BE REPRODUCED OR COPIED OR USED IN WHOLE OR IN PART AS THE BASIS FOR THE MANUFACTURE OR SALE OF ITEMS WITHOUT WRITTEN PERMISSION. COPYRIGHT © 1973 DIGITAL EQUIPMENT CORPORATION"

WIRE LIST										
ITEM NO	AWG	COLOR	POINT	FROM			TO			SIGNAL
				CONNECTION	WITH	POINT	CONNECTION	WITH		
4	14	RED	1	---	8,9	12	P3-1	3	+5V	
	TWP	BLK	2	---	8,9	13	P3-8	3	GND	
5	14	BLU	3	---	8,9	10	P2-13	3	-15V	
	TWP	BLK	4	---	8,9	11	P2-8	3	GND	
6	14	RED	5	---	8,9	14	P3-4	3	+5V	
	TWP	YEL	6	---	8,9	8	P1-4	3	AC LO	
7	18	YEL	7	---	8,9	9	P1-3	3	DC LO	

- NOTES:
- USE TIE WRAPS (X) ITEM 10 APPROXIMATELY EVERY THREE (3) INCHES WHEN NECESSARY AND AT EVERY BREAK-OUT POINT.
 - ATTACH MALE FASTON DEC # (9008219-0) WITH #4 WOOD SCREWS (7 PLACES).
 - USE CONN. BRKT C-MD-9305761-H15-0 MOUNT WITH #6 WOOD SCREWS. USE MATING CONN. 1209350-15
 - USE CONN. BRKT C-MD-9305761-H6-0 MOUNT WITH #6 WOOD SCREWS. USE MATING CONN. 1209350-06
 - AT POINTS 1-7 UNTWIST WIRES BACK TO NAIL
 - DOT (•) DENOTES NAIL LOCATIONS FOR ASSEMBLY USE ONLY. COVER NAILS WITH SHRINK TUBING TO PREVENT CUTTING HARNESS.



SYMBOL	DESCRIPTION	PART NO.	ITEM NO.
X	A/R WRAP, TIE	9007031	10
○	A/R TUBING, SHRINK	9107305-02	9
⊙	7 CONN., SOLDERLESS	9009262-0	8
	A/R WIRE, #18 TWP YEL/VIO	9107430-47	7
	A/R WIRE, #14 AWG RED	9107370-22	6
	A/R WIRE, #14 TWP BLK/BLU	9107440-06	5
	A/R WIRE, #14 TWP BLK/RED	9107440-02	4
	7 PIN, MALE	1209378-01	3
	2 HOUSING CONN. 15 PIN	1209351-15	2
	1 HOUSING CONN. 6 PIN	1209351-06	1

FIRST USED ON OPTION/MODEL MF11-L		QTY.	DESCRIPTION	PART NO.	ITEM NO.
UNLESS OTHERWISE SPECIFIED DIMENSION IN INCHES					
TOLERANCES					
DECIMALS	ANGLES	DATE 9/27/73			
.xxx = .005	±0° 30'	CHK'D DATE 10/1/73			
.xx = .02		ENG. DATE 11/1/73			
.x = .1		PROJ. ENG. DATE 11/1/73			
REMOVE BURRS AND BREAK SHARP CORNERS SURFACE QUALITY Y					
DRN. DATE 9/27/73					
CHK'D DATE 10/1/73					
ENG. DATE 11/1/73					
PROJ. ENG. DATE 11/1/73					
RROR. DATE 10/1/73					
YORK. DATE 10/1/73					
MATERIAL		NEXT HIGHER ASSY.			
SEE PARTS LIST		TITLE			
FINISH		SCALE 1/1			
		SHEET 1 OF 1			
		LIST			
		SIZE CODE NUMBER REV.			
		D 14 7009565-0-0 A			

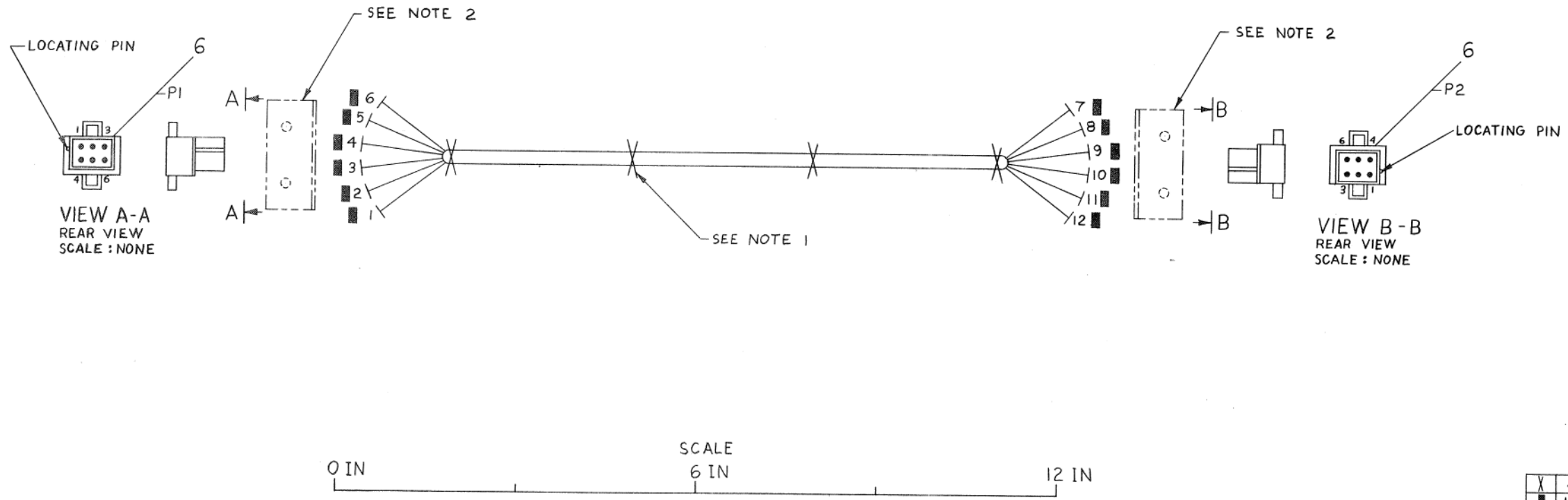
REV	DATE	BY	CHK'D
1	11/1/73	BOAEN	
2	11/1/73	BOAEN	

"THIS DRAWING AND SPECIFICATIONS, HEREIN, ARE THE PROPERTY OF DIGITAL EQUIPMENT CORPORATION AND SHALL NOT BE REPRODUCED OR COPIED OR USED IN WHOLE OR IN PART AS THE BASIS FOR THE MANUFACTURE OR SALE OF ITEMS WITHOUT WRITTEN PERMISSION. COPYRIGHT © 1973, DIGITAL EQUIPMENT CORPORATION"

WIRE TABLE										
ITEM NO.	DESCRIPTION	FROM			TO			SIGNAL	LENGTH	
		AWG	COLOR	POINT	CONNECTION	TERM	POINT			CONNECTION
1	18	WHT	1	PI-6	7	7	P2-6	7	SPARE-2	12 IN
1	18	WHT	2	PI-5	8	8	P2-5	8	SPARE-1	
3	18	YEL	3	PI-4	9	9	P2-4	9	AC LO	
2	18	VIO	4	PI-3	10	10	P2-3	10	DC LO	
4	18	BRN	5	PI-2	11	11	P2-2	11	LINE CLOCK	
5	18	BLK	6	PI-1	12	12	P2-1	12	LO GND	12 IN

NOTES:
 1. USE TIE WRAPS ITEM 8 APPROXIMATELY EVERY THREE (3) INCHES WHEN NECESSARY AND AT EVERY BREAKOUT POINT.
 2. USE CONN. BRKT. C-MD-9305761-H6-0. MOUNT WITH WOOD SCREWS. USE MATING CONN. 1209350-06.

D
C
B
A



DO NOT REDUCE
DO NOT BUILD FROM REDUCED PRINT

SYM	QTY.	DESCRIPTION	PART NO.	ITEM NO.
X	4	WRAP, TIE	9007031	8
■	12	PIN, MALE	1209378-00	7
	2	HOUSING, CONN. 6 PIN	1209351-06	6
	12 IN	WIRE #18 AWG BLK	9107360-00	5
	12 IN	WIRE #18 AWG BRN	9107360-11	4
	12 IN	WIRE #18 AWG YEL	9107360-44	3
	12 IN	WIRE #18 AWG VIO	9107360-77	2
	24 IN	WIRE #18 AWG WHT	9107360-99	1

FIRST USED ON OPT/MOD	SYM	QTY.	DESCRIPTION	PART NO.	ITEM NO.
PARTS LIST					
UNLESS OTHERWISE SPECIFIED DIMENSION IN INCHES		DRN. <i>B. Blodgett</i>	DATE 10-15-73	digital EQUIPMENT CORPORATION MAYNARD MASSACHUSETTS	
TOLERANCES		CHK'D. <i>[Signature]</i>	DATE 10/17/73		
DECIMALS	ANGLES	ENG. <i>[Signature]</i>	DATE 10/17/73	TITLE 6 PIN JUMPER HARNESS	
.xxx = .005		PROJ. ENG. <i>[Signature]</i>	DATE 10/17/73		
.xx = .02	±0° 30'	PROD. <i>[Signature]</i>	DATE 10/17/73	MATERIAL NEXT HIGHER ASSY.	
.x = .1		SEE PARTS LIST			
REMOVE BURRS AND BREAK SHARP CORNERS SURFACE QUALITY ✓		SCALE		SIZE CODE	NUMBER
		SHEET 1 OF 1		DIA	7009573-0-0
				DIST.	

REV.	CHANGE NO.