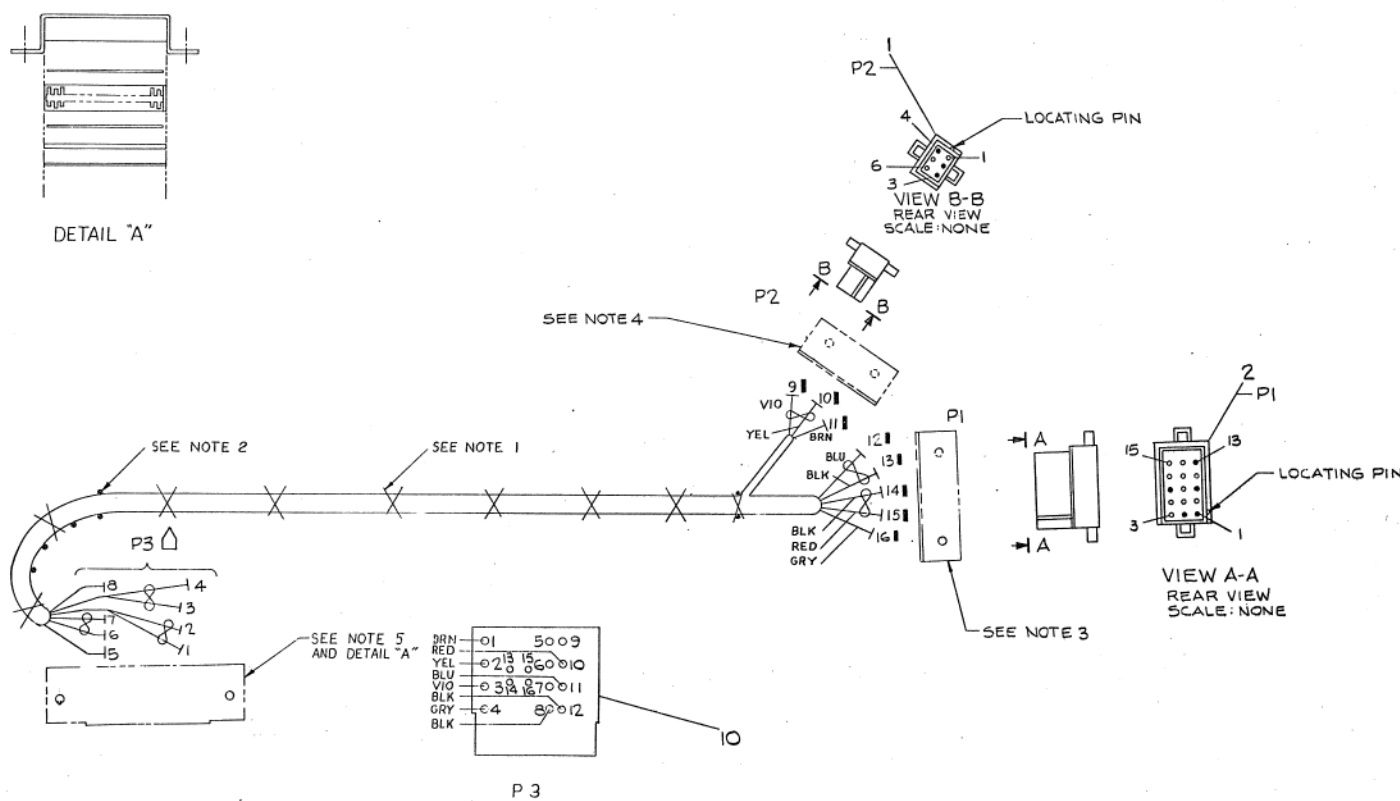
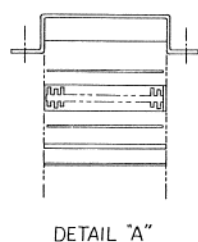


ITEM NO.	DESCRIPTION	WIRE		FROM		TERM	POINT	CONNECTION	TERM	POINT	CONNECTION	TERM	SIGNAL
		AWG	COLOR	POINT	CONNECTION								
5	14 RED	3	P3-10	SOLD	15	P1-1	3	+5V					
9	14 TWP BLK	4	P3-8	SOLD	14	P1-7	3	GND					
9	14 GRN	5	P3-4	SOLD	6	P1-2	3	+15V					
6	14 TWP BLK	1	P3-12	SOLD	5	P1-9	3	GND					
8	18 BRN	8	P3-1	SOLD	11	P2-2	3	LTC					
7	8 VIO	6	P3-3	SOLD	9	P2-3	3	DcLo					
7	8 TWP YEL	7	P3-2	SOLD	10	P2-4	3	AcLo					
11	22 -	-	P3-13	SOLD	-	P3-14	SOLD	DcLo					
11	22 -	-	P3-15	SOLD	-	P3-16	SOLD	AcLo					



BRN	01	5009
RED	02	060010
YEL	03	060010
BLU	04	060010
VIO	05	060011
BLK	06	060011
GRY	07	060012
BLK	08	060012

0 IN. SCALE 6 IN. 12 IN.
DO NOT REDUCE
DO NOT BUILD FROM REDUCED PRINT

- NOTES:
- USE TIE WRAPS (X) ITEM #4 APPROXIMATELY EVERY THREE (3) INCHES WHEN NECESSARY AND AT EVERY BREAKOUT POINT.
 - DOT (•) INDICATES NAIL LOCATIONS FOR ASSEMBLY USE ONLY. COVER NAILS WITH SHRINK TUBING TO PREVENT CUTTING HARNESS.
 - USE CONN BRKT C-MD-930376H15-0 MOUNT WITH WOOD SCREWS. USE MATING CONN 1203350-3.
 - USE CONN BRKT C-MD-930376H6-0 MOUNT WITH WOOD SCREWS. USE MATING CONN 1203350-02.
 - USE CONN HOLD DOWN B-MD-930376F-00 WITH PLATE B-MD-930376F-0-1. USE TAPE DEC #9008734 (CONN H07 DEC #1209123) REMOVE PINS & FLANGES AS SHOWN IN DETAIL "A". MOUNT WITH WOOD SCREWS.

QTY	DESCRIPTION	PART NO.	ITEM NO.
1	A/R BUSS WIRE #22AWG	9107560-01	11
1	POWER CONN	6772	10
1	A/R WIRE #4AWG GRN	9107560-08	9
1	A/R WIRE #3AWG BRN	9107560-11	8
1	A/R WIRE #2TWP YEL/VIO	9107560-47	7
1	A/R WIRE #2TWP BLK/BLU	9107560-06	6
1	A/R WIRE #2TWP BLK/RED	9107560-02	5
1	A/R WRAP TIE	9007051	4
1	CON. MALE	1203350-03	3
1	HOUSE CONN. 15PIN	1203351-15	2
1	HOUSE CONN. 6PIN	1203351-06	1

UNLESS OTHERWISE SPECIFIED DIMENSIONS IN INCHES TOLERANCES	DATE	BY	DATE	BY	DATE
DECIMALS .010	APR 68
ANGLES 1/2°
FINISH
EQUIPMENT CORPORATION		TITLE		REV	
G772 SYSTEM		UNIT HARNESS		E 11	
SCALE 1/1		NUMBER		REV	
THREE 1 OF		7009662-00		...	