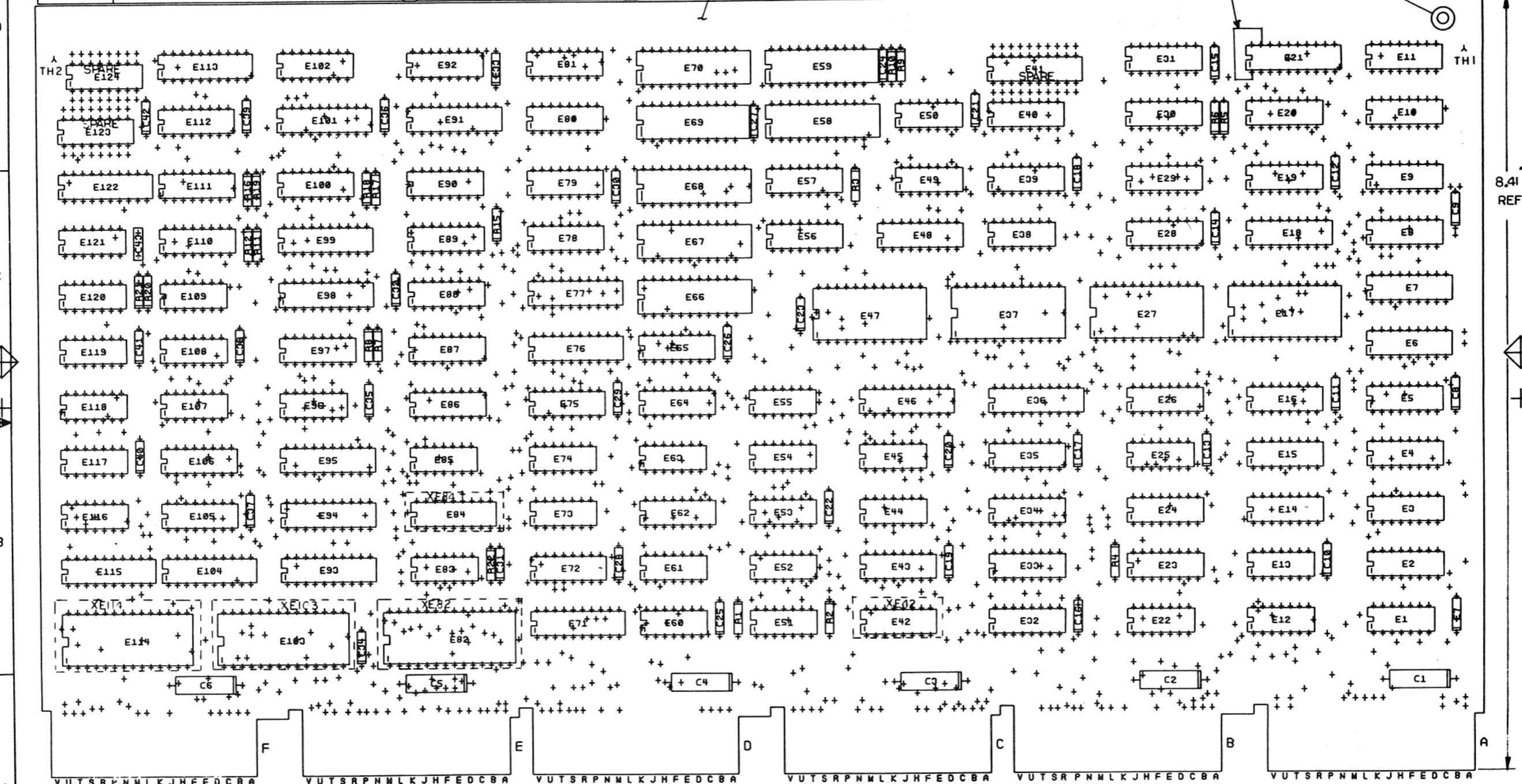


2 D JAM7094-0-0 1

THIS DRAWING AND SPECIFICATIONS, HEREIN, AND THE PROPERTY OF DIGITAL EQUIPMENT CORPORATION AND SHALL NOT BE REPRODUCED OR TRANSMITTED IN ANY FORM OR BY ANY MEANS, ELECTRONIC OR MECHANICAL, INCLUDING PHOTOCOPYING, RECORDING, OR BY ANY INFORMATION STORAGE AND RETRIEVAL SYSTEM.

COMPONENT SIDE VIEW



NOTES: 1. E41, E123 AND E124 ARE SPARE LOCATIONS.

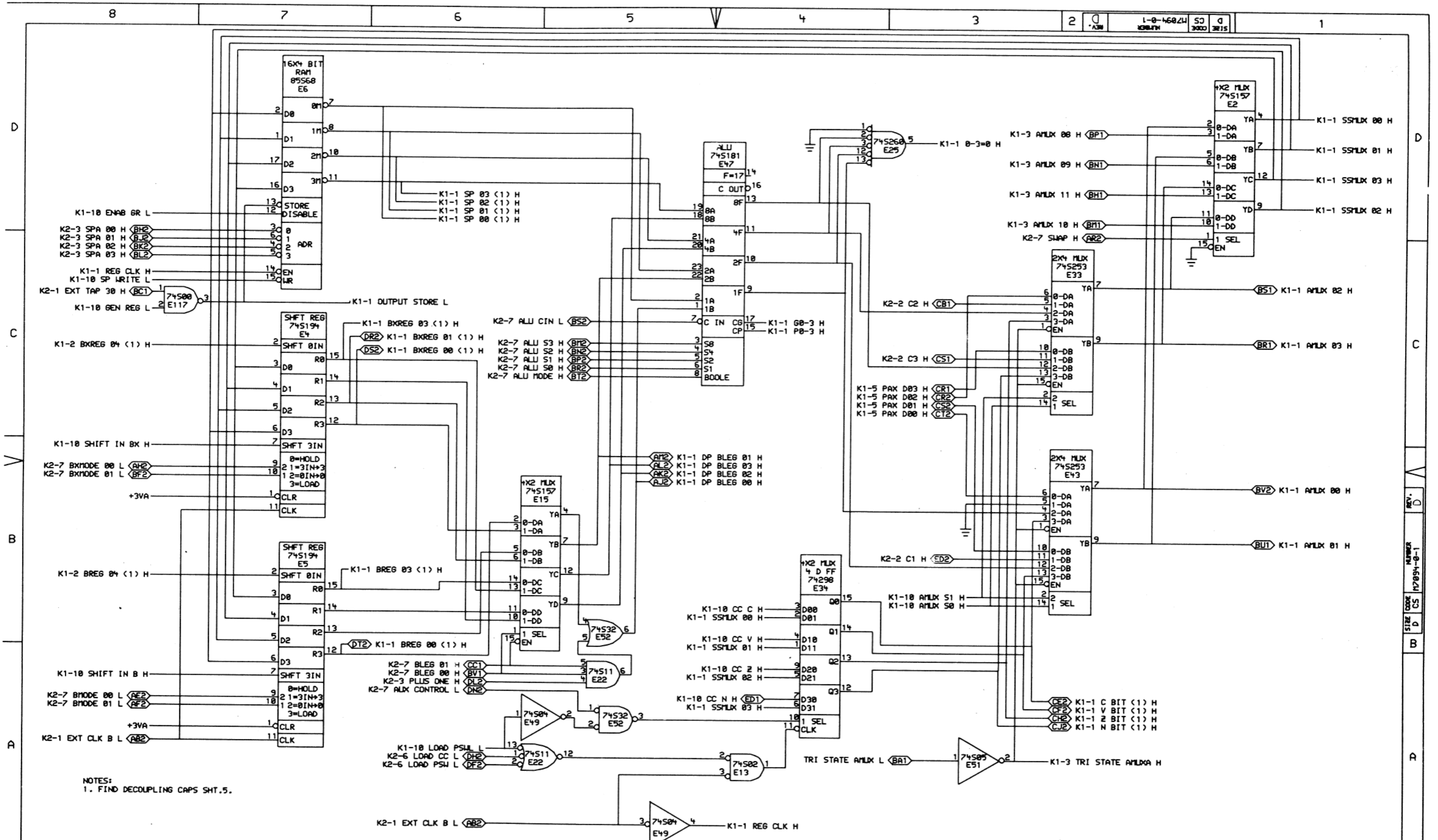
STEP E + Y AXIS — STEP / TIMES
 REPEAT → X AXIS — STEP / TIMES

CHANGE NO	REV
M 70-41-TWO	C
RETRAWN	1-6

ETCH REV.	C-PI
-----------	------

SIGNATURES	DATE	digital
DRAWN	5/27/71	
CHK'D	5/27/71	TITLE KD11-Z
MECH. ENG.	5/27/71	DATA PATH
PROJ. ENG.	5/27/71	SIZE CODE NUMBER
PROD. C.	5/27/71	0 UAM7094-0-0 C
SCALE 2/1		REV
SHT. OF 2		
NEXT HIGHER ASSY. B-DD-M7094-0		

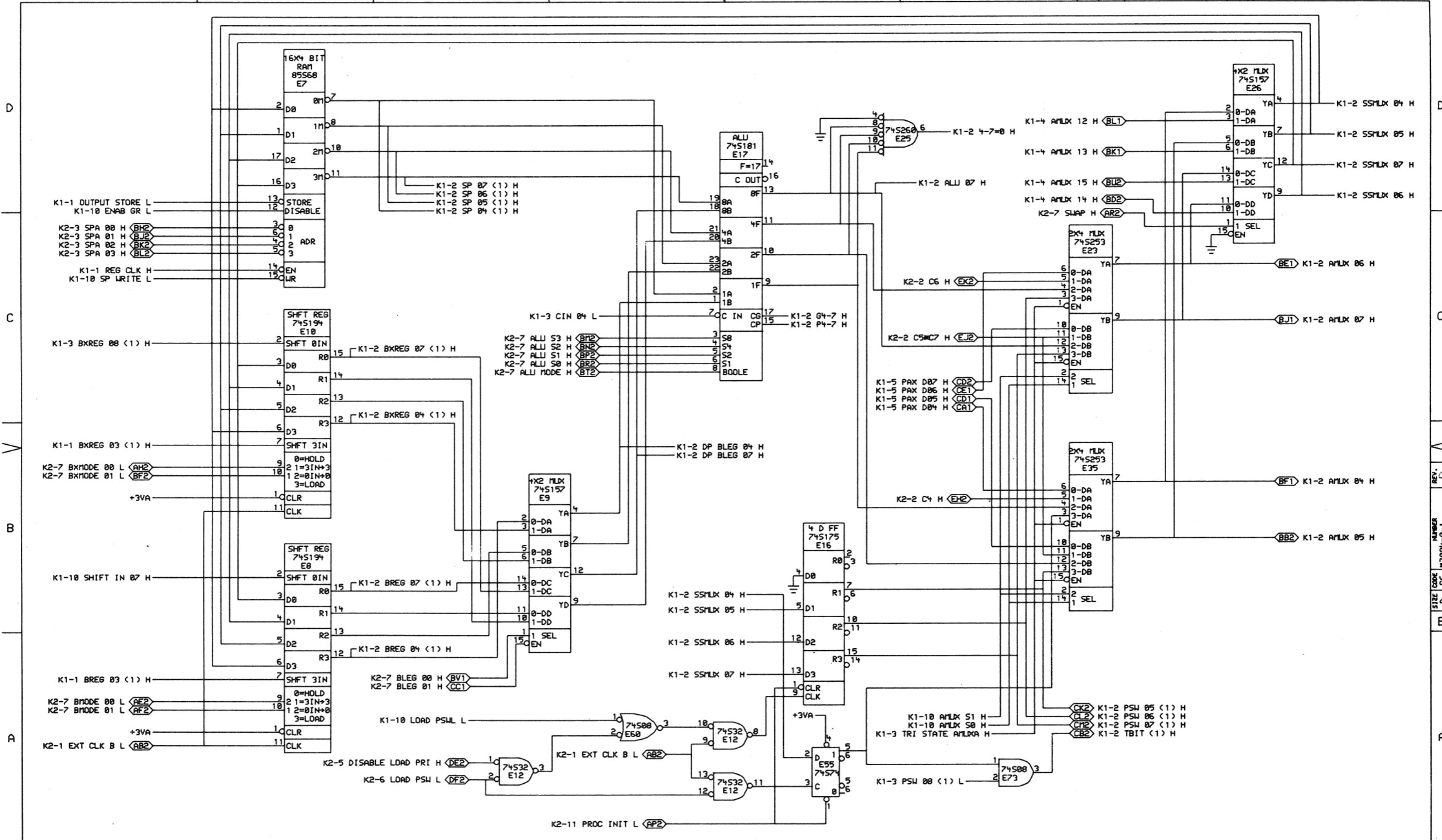
TU 1 MS#1719

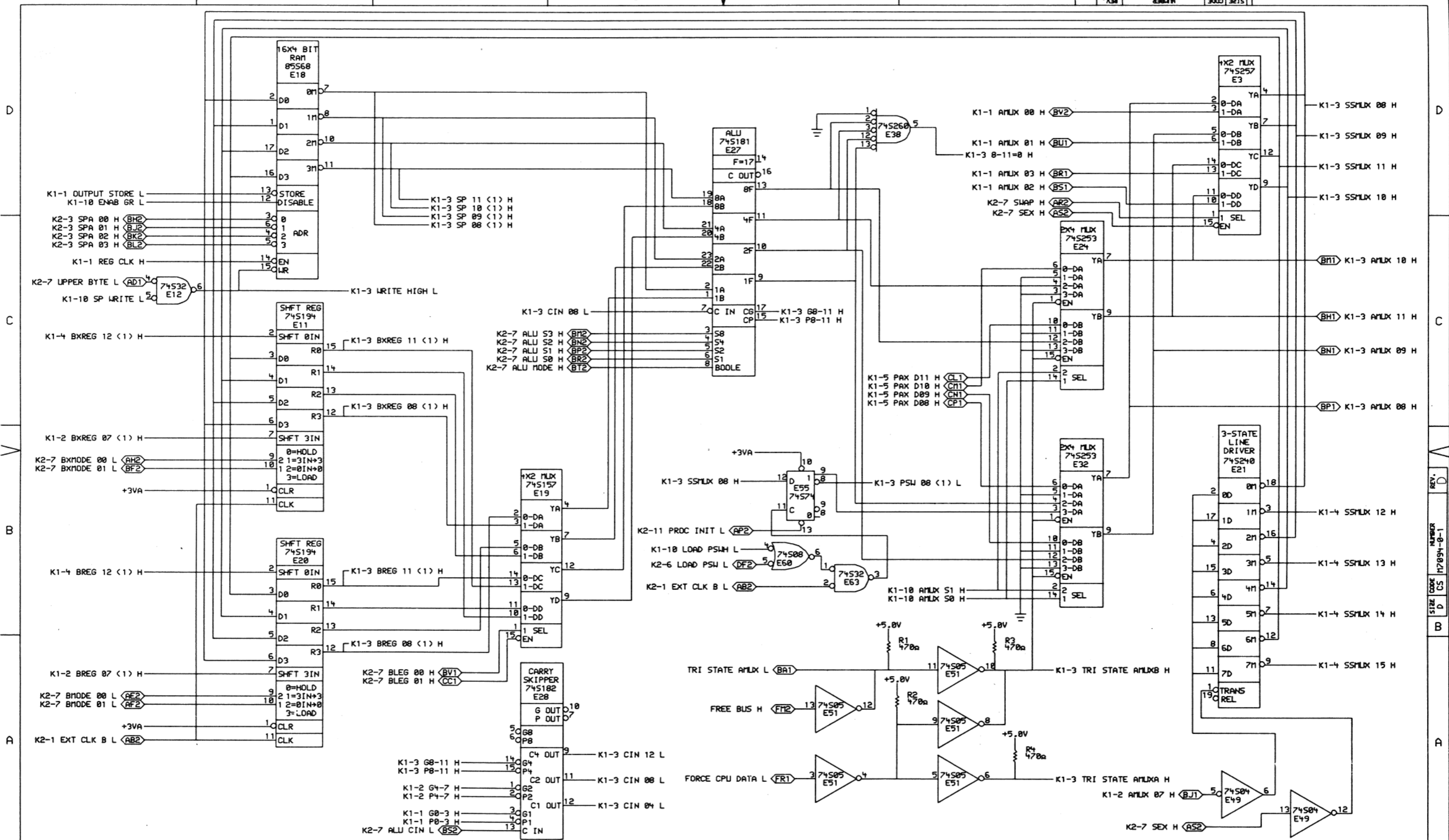


NOTES:
1. FIND DECOUPLING CAPS SHT.5.

THIS DRAWING AND SPECIFICATIONS ARE THE PROPERTY OF DIGITAL EQUIPMENT CORPORATION AND SHALL NOT BE REPRODUCED OR COPIED OR USED IN WHOLE OR IN PART AS THE BASIS FOR THE MANUFACTURE OR SALE OF ITEMS WITHOUT WRITTEN PERMISSION. COPYRIGHT © 1979, DIGITAL EQUIPMENT CORPORATION.		REVISIONS M7094-TW002 C H.D. M7094-TW003 D R. DAY J. KRATOSKA Bill Galt 21-MAR-80	DATE 18-OCT-79 16-OCT-79 14:39 11/74	ENG. R. Day (B.G.) BOARD LOCATION: SHEET 1 OF 11 B-DD-M7094-0	TITLE: (K1-1) DATA PATH (D0-D3) SIZE CODE: D CS NUMBER: M7094-0-1 REV.: D
--	--	--	--	--	--

REV. D
 NUMBER M7094-0-1
 SIZE CODE D CS
 BOARD LOCATION B DD
 SHEET 1 OF 11

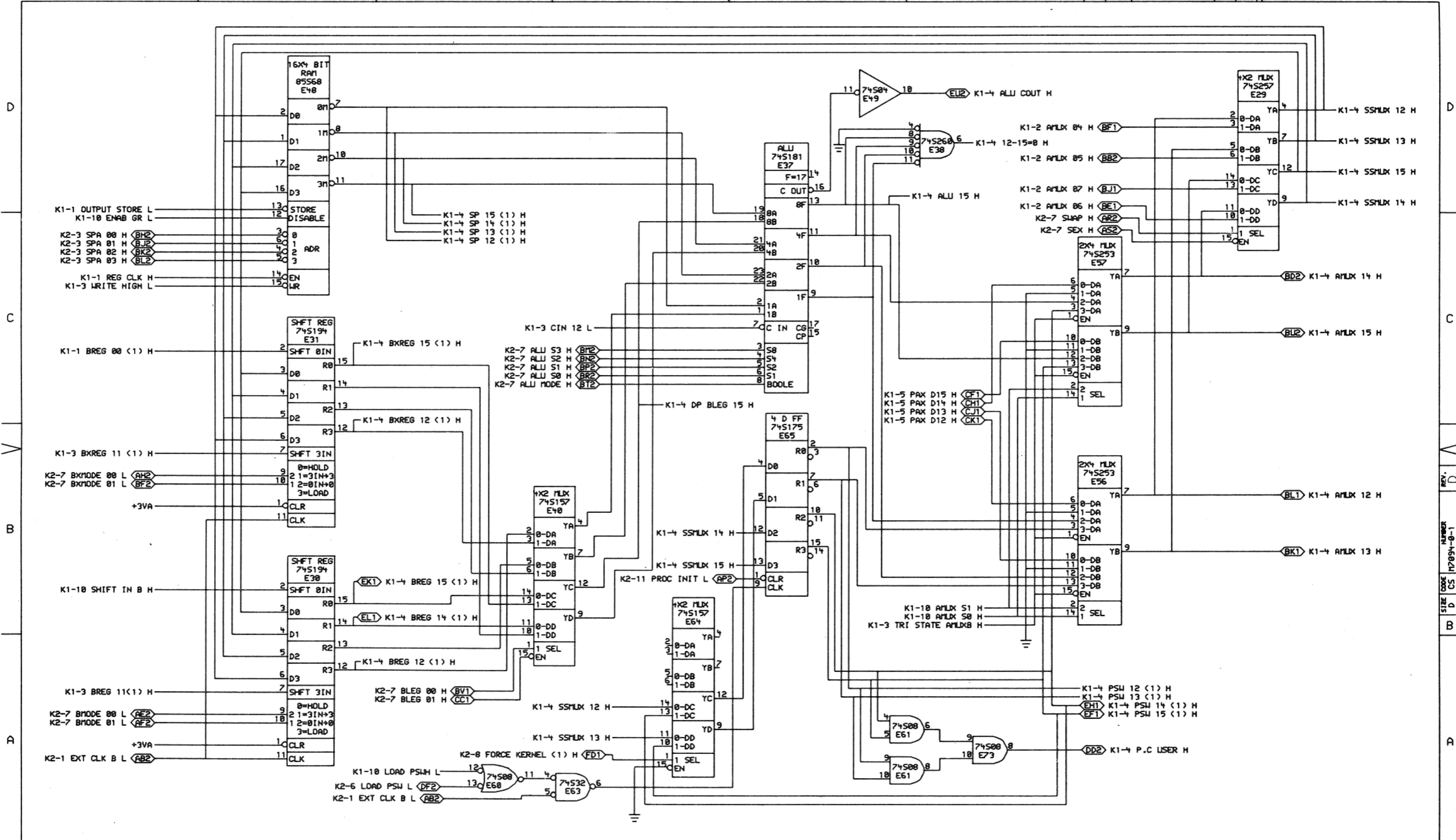




THIS DRAWING AND SPECIFICATIONS, HEREIN, ARE THE PROPERTY OF DIGITAL EQUIPMENT CORPORATION AND SHALL NOT BE REPRODUCED OR COPIED OR USED IN WHOLE OR IN PART AS THE BASIS FOR THE MANUFACTURE OR SALE OF ITEMS WITHOUT WRITTEN PERMISSION. COPYRIGHT © 1979, DIGITAL EQUIPMENT CORPORATION.

REVISIONS	CHK	CHANGE NO.	REV

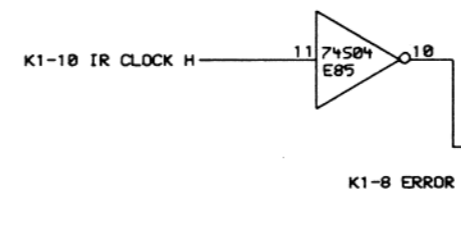
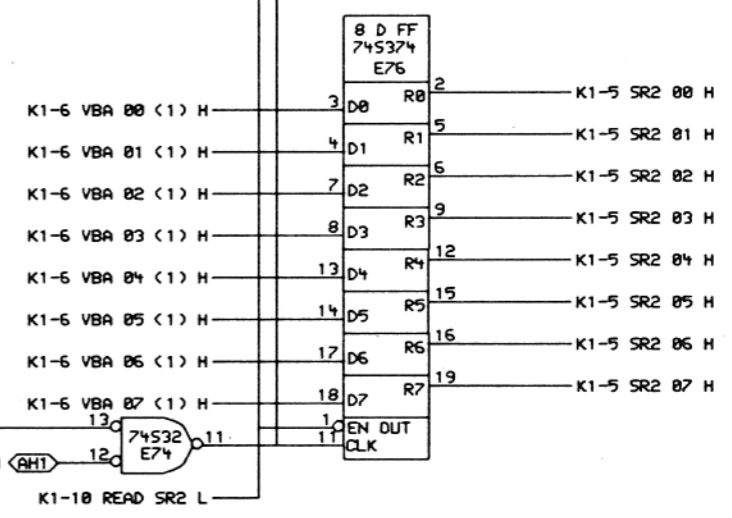
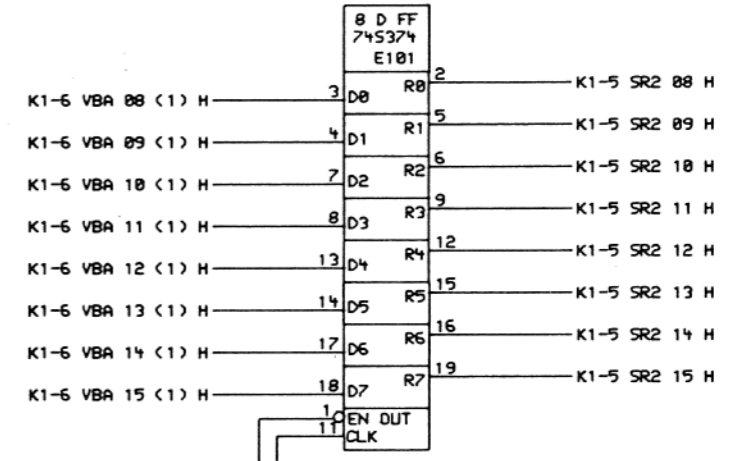
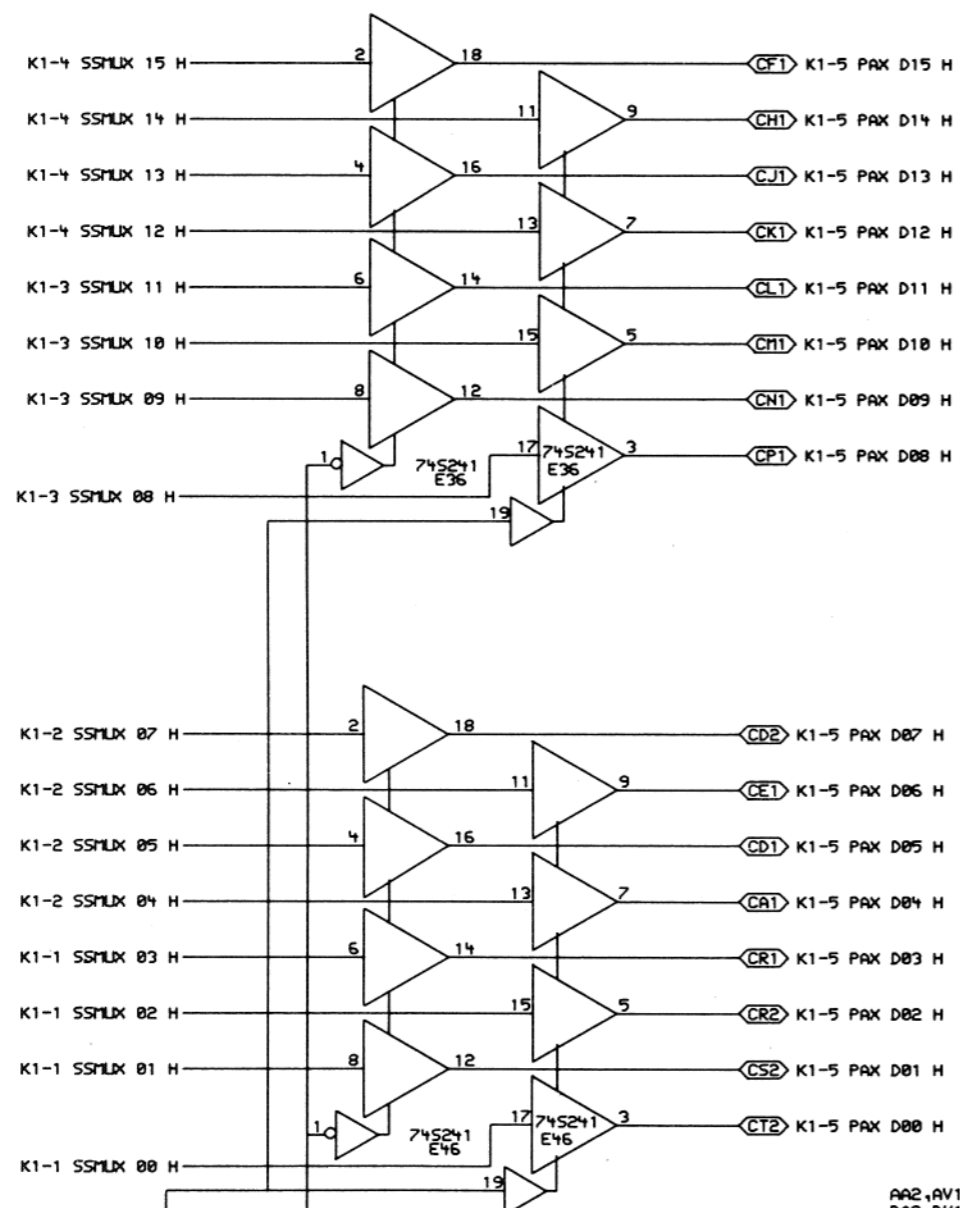
digital
 DATE 18-OCT-79
 DATE BOARD LOCATION: 3 OF 11
 TITLE: (K1-3) DATA PATH (D8-D11)
 FIRST USED ON OPTION/MODEL: 11/44 B-DD-M7094-0
 SIZE CODE D CS M7094-0-1
 NUMBER 1
 REV. 1



THIS DRAWING AND SPECIFICATIONS ARE THE PROPERTY OF DIGITAL EQUIPMENT CORPORATION AND SHALL NOT BE REPRODUCED OR COPIED OR USED IN WHOLE OR IN PART AS THE BASIS FOR THE MANUFACTURE OR SALE OF ITEMS WITHOUT WRITTEN PERMISSION. COPYRIGHT © 1979, DIGITAL EQUIPMENT CORPORATION.

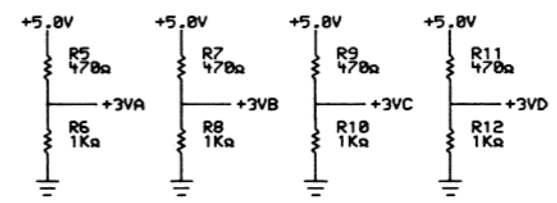
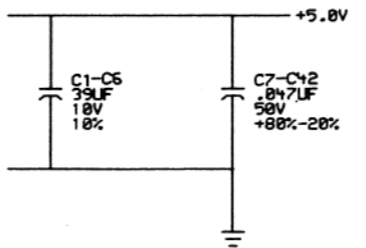
REVISIONS	
CHK	CHANGE NO. REV

digital	DRW. <i>J. G. Smith</i>	DATE 18-OCT-79	ENG. <i>[Signature]</i>	DATE	TITLE: (K1-4) DATA PATH (D12-D15)
	CRK-40	DATE	BOARD LOCATION: SHEET 4 OF 11		
FIRST USED ON OPTION MODEL: 11/44		NEXT HIGHER ASSEMBLY: B-DD-M7094-0		SIZE CODE D CS	NUMBER M7094-0-1



AA2,AV1,BA2,CA2,CV1
DA2,DV1,EA2,FA2,FV1

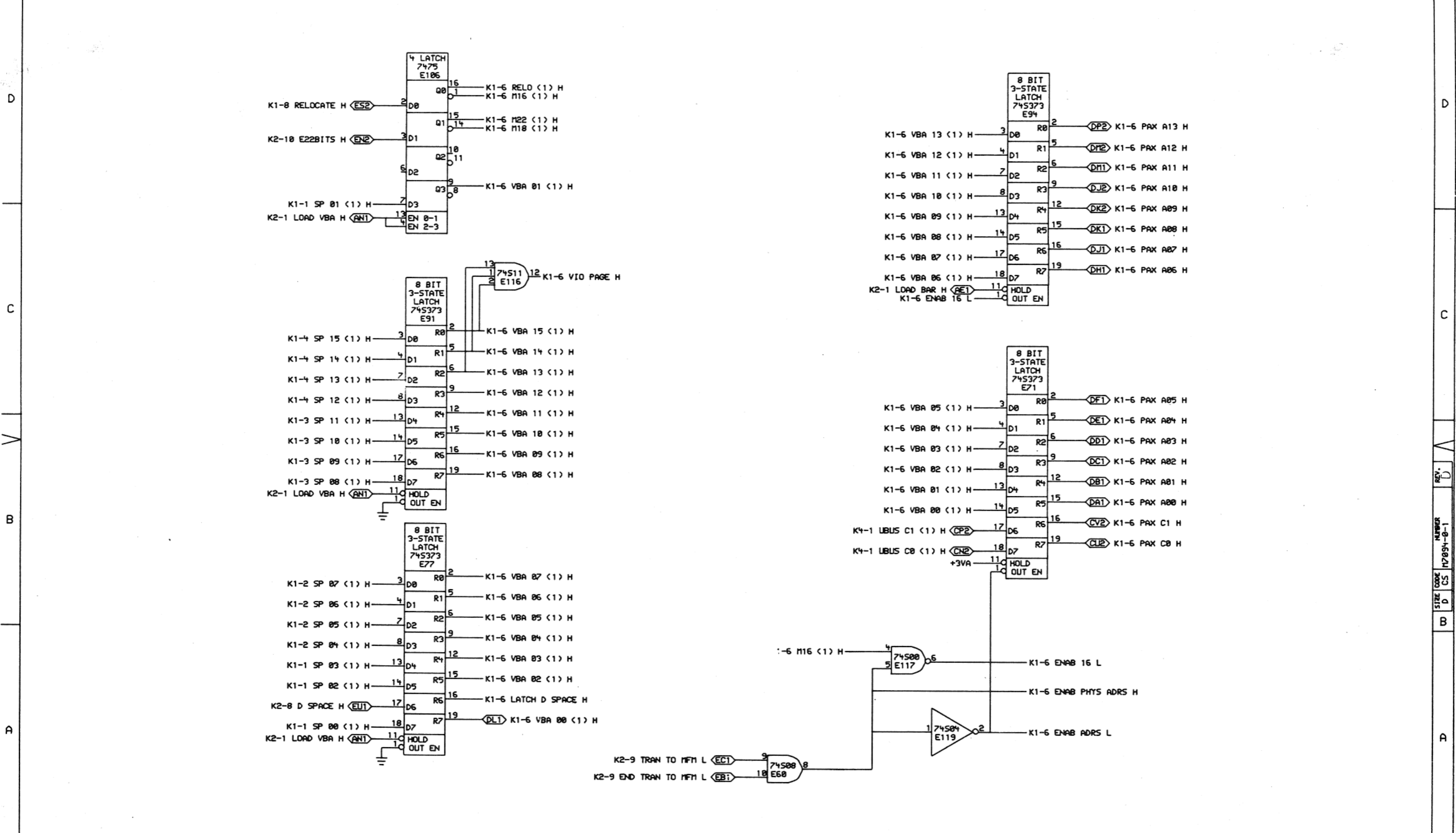
AC2,AT1,BC2,BT1,CC2,CT1
DC2,DT1,EC2,ET1,FC2,FT1



THIS DRAWING AND SPECIFICATIONS
HEREIN ARE THE PROPERTY OF
DIGITAL EQUIPMENT CORPORATION AND
SHALL NOT BE REPRODUCED OR COPIED
OR USED IN WHOLE OR IN PART AS
THE BASIS FOR THE MANUFACTURE OR
SALE OF ITEMS WITHOUT WRITTEN
PERMISSION. COPYRIGHT © 1979
DIGITAL EQUIPMENT CORPORATION

REVISIONS	CHK	CHANGE NO.	REV

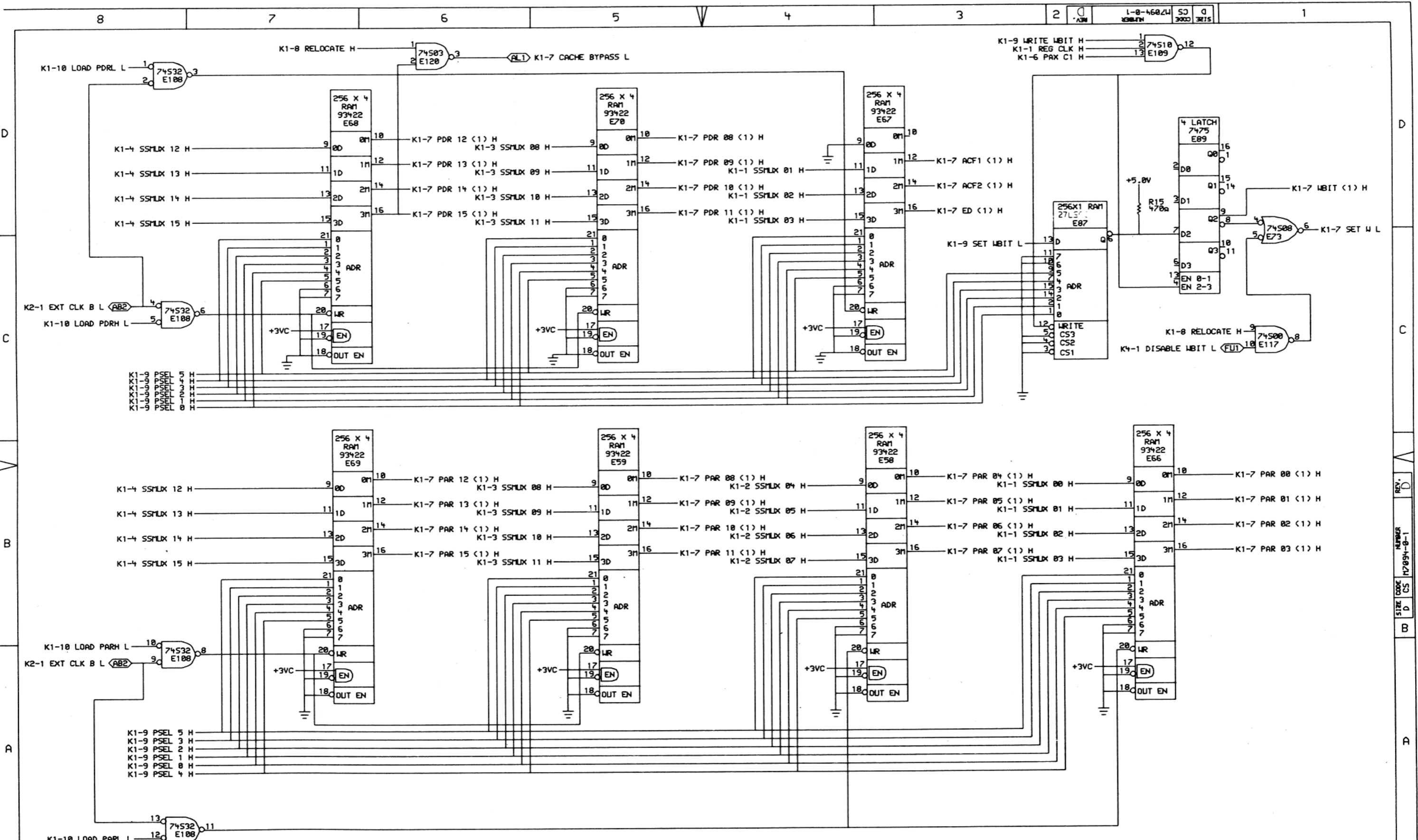
digital DRN. *J. J. J.* DATE 18-OCT-79 ENG. DATE
 DATE BOARD LOCATION: SHEET 5 OF 11
 TITLE: (K1-5) DATA PATH (PAX DATA, SR2)
 FIRST USED ON OPTION/MODEL: 11/44 NEXT HIGHER ASSEMBLY: B-DD-M7094-0
 SIZE CODE D CS M7094-0-1 NUMBER REV. 1



THIS DRAWING AND SPECIFICATIONS ARE THE PROPERTY OF DIGITAL EQUIPMENT CORPORATION AND SHALL NOT BE REPRODUCED OR COPIED OR USED IN WHOLE OR IN PART AS THE BASIS FOR THE MANUFACTURE OR SALE OF ITEMS WITHOUT WRITTEN PERMISSION. COPYRIGHT © 1979, DIGITAL EQUIPMENT CORPORATION.

REVISIONS	
CHK	CHANGE NO. REV

digital	DATE	16-OCT-79	ENG.	DATE		TITLE: (K1-6) DATA PATH (KT BUFFER)
	DATE	16-OCT-79 14:47	BOARD LOCATION:	SHEET	8 OF 11	
FIRST USED ON OPTION/MODEL: 11/44		NEXT HIGHER ASSEMBLY: B-DD-M7094-0		SIZE	D	CODE
				CS	M7094-0-1	NUMBER
						REV.

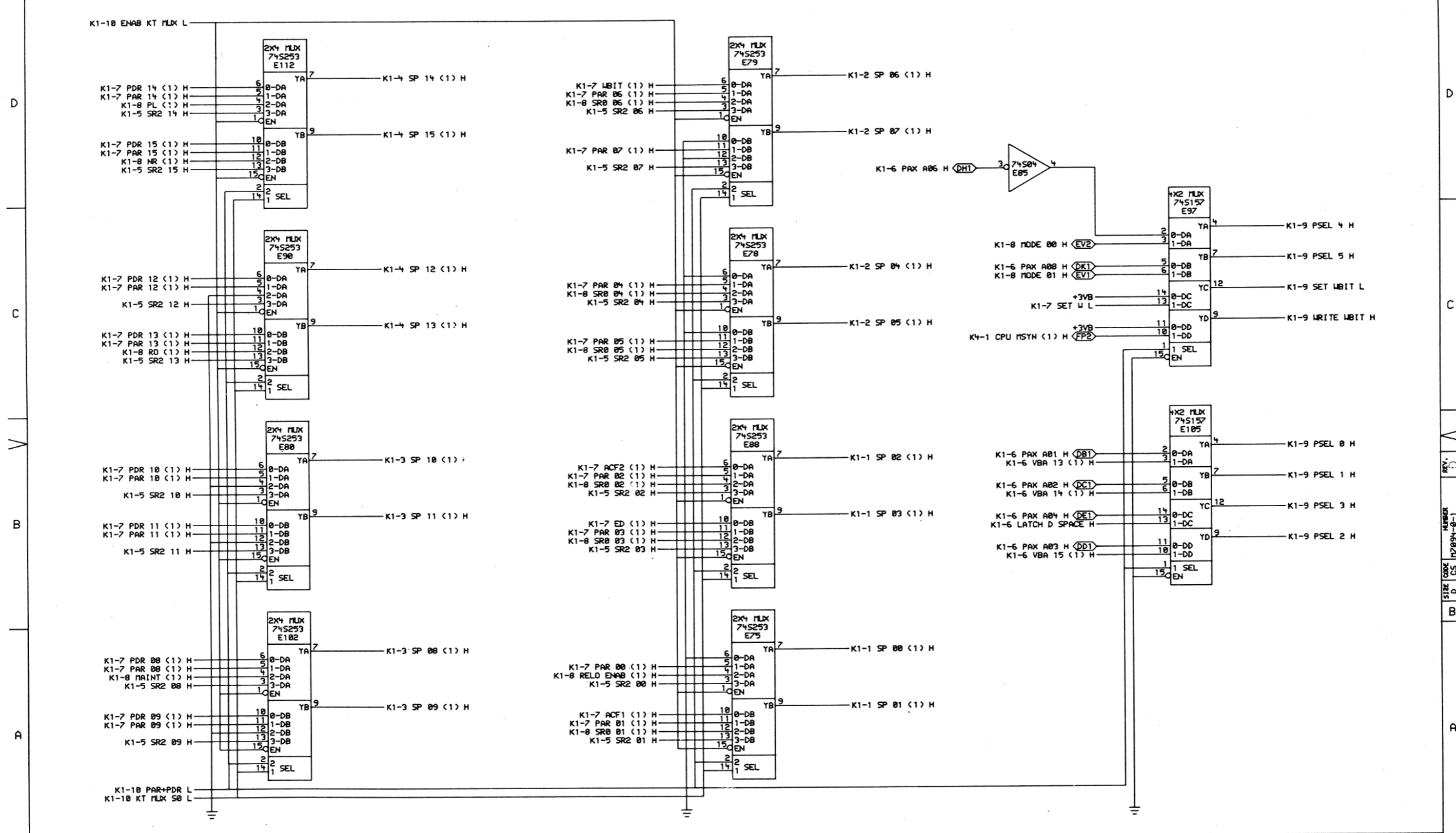


THIS DRAWING AND SPECIFICATIONS ARE THE PROPERTY OF DIGITAL EQUIPMENT CORPORATION AND SHALL NOT BE REPRODUCED OR COPIED OR USED IN WHOLE OR IN PART AS THE BASIS FOR THE MANUFACTURE OR SALE OF ITEMS WITHOUT WRITTEN PERMISSION. COPYRIGHT © 1979, DIGITAL EQUIPMENT CORPORATION.

REVISIONS	
CHK	CHANGE NO. REV

DATE: 18-OCT-79	ENG: [Signature]	DATE: [Blank]	DATE: [Blank]	TITLE: (K1-7) DATA PATH (PAR, PDR)
DATE: [Blank]	BOARD LOCATION: [Blank]	SHEET: 7	OF: 11	
SIZE: D	CODE: CS	NUMBER: M7094-0-1	REV: [Blank]	
FIRST USED ON OPTION/MODEL: 11/44		NEXT HIGHER ASSEMBLY: B-DD-M7094-0		

DATE: 18-OCT-79
 BOARD LOCATION: [Blank]
 SHEET: 7 OF 11
 SIZE: D CS M7094-0-1
 NUMBER: TW
 REV: [Blank]



THIS DRAWING AND SPECIFICATIONS ARE THE PROPERTY OF DIGITAL EQUIPMENT CORPORATION AND SHALL NOT BE REPRODUCED OR COPIED OR USED IN WHOLE OR IN PART AS THE BASIS FOR THE MANUFACTURE OR SALE OF ITEMS WITHOUT WRITTEN PERMISSION. COPYRIGHT © 1979, DIGITAL EQUIPMENT CORPORATION.

REVISIONS	
CHK	CHANGE NO. REV

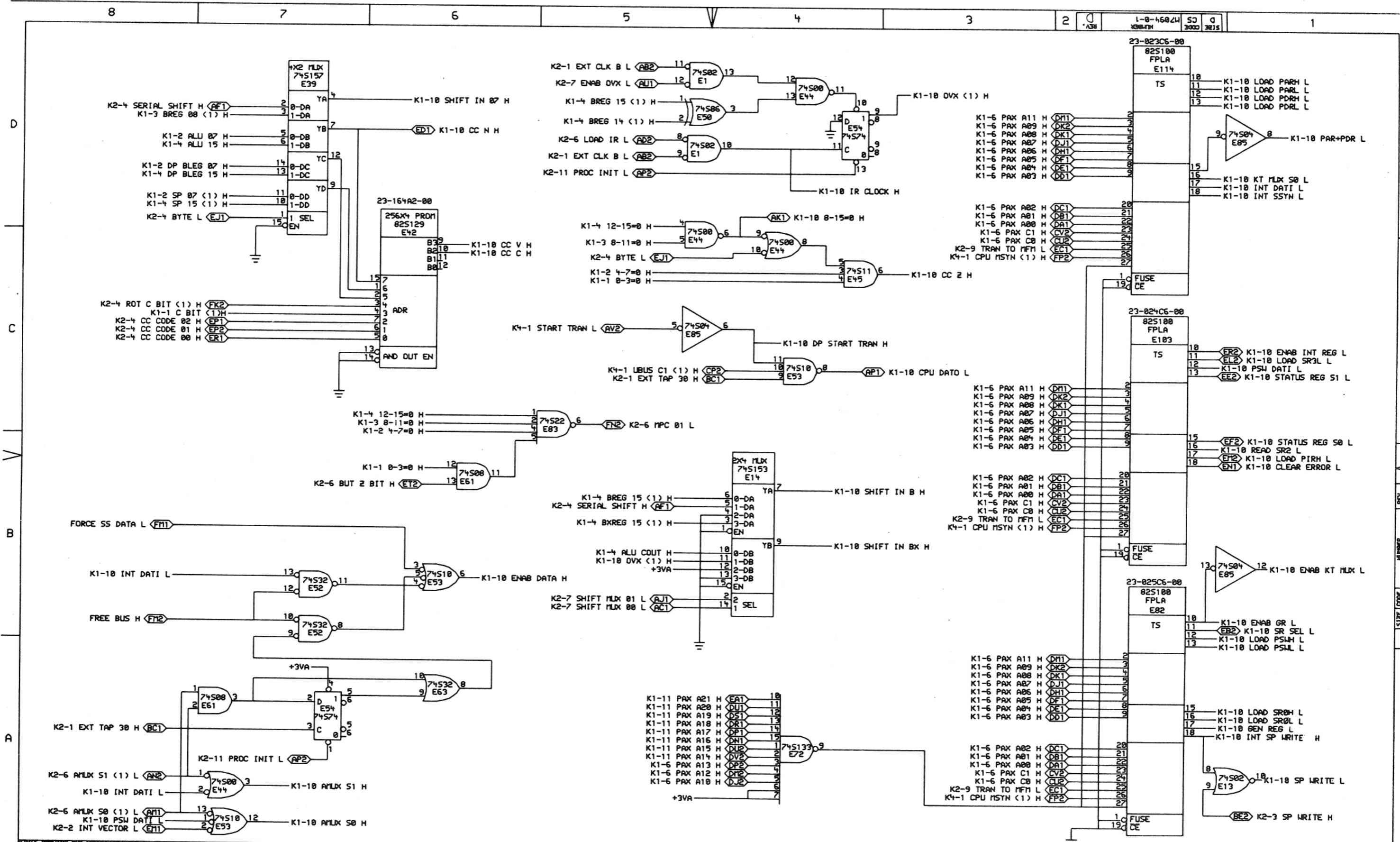
DATE	ENG.	DATE	REV.
18-OCT-79			

digital DRN: [Signature] DATE: 18-OCT-79 ENG: [Signature] DATE: [Signature] TITLE: (K1-9) DATA PATH (REG MUXES)

150,257 JK190.DRW 16-OCT-79 14:50 NEXT HIGHER ASSEMBLY: [Signature] SIZE: D CODE: CS NUMBER: M7094-0-1 REV: D

FIRST USED ON OPTION/MODEL: 11/44 B-DD-M7094-0

8 7 6 5 4 3 2 1
 TW



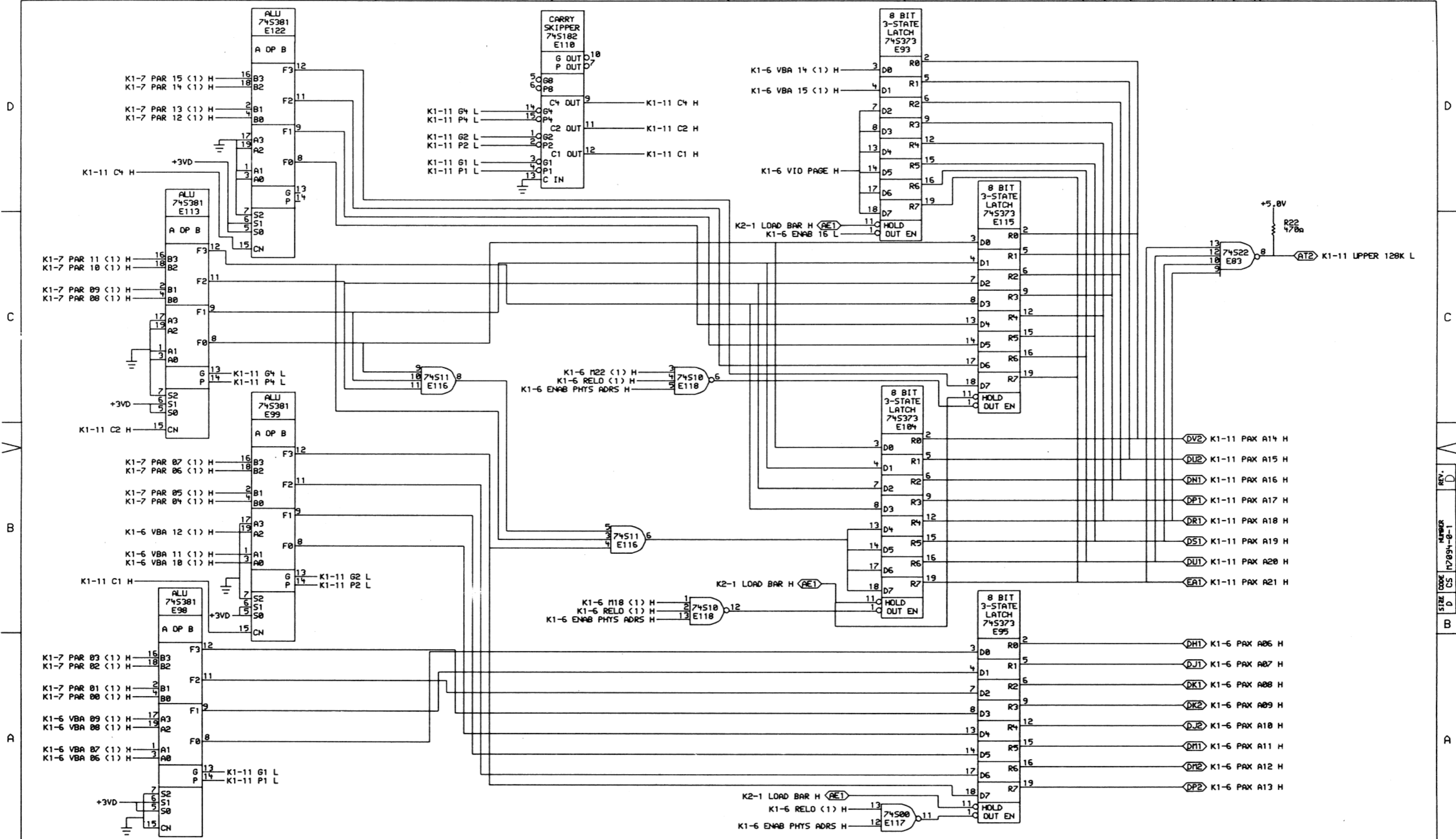
THIS DRAWING AND SPECIFICATIONS ARE THE PROPERTY OF DIGITAL EQUIPMENT CORPORATION AND SHALL NOT BE REPRODUCED OR COPIED OR USED IN WHOLE OR IN PART AS THE BASIS FOR THE MANUFACTURE OF ITEMS WITHOUT WRITTEN PERMISSION. COPYRIGHT © 1979, DIGITAL EQUIPMENT CORPORATION.

REVISIONS		
CHK	CHANGE NO.	REV

160,257 JK1100.DRW	16-OCT-79 14:50	DATE	10-OCT-79	DATE	10-OCT-79	DATE	10-OCT-79
FIRST USED ON OPTION MODEL: 11/44		NEXT HIGHER ASSEMBLY: B-DD-M7094-0		BOARD LOCATION: SHEET 10 OF 11		TITLE: (K1-10) DATA PATH (INT ADRS DEC)	
				SIZE CODE: D CS		NUMBER: M7094-0-1	
						REV: D	

digital
 (160,257 JK1100.DRW) 16-OCT-79 14:50
 DATE 10-OCT-79
 NEXT HIGHER ASSEMBLY: B-DD-M7094-0
 BOARD LOCATION: SHEET 10 OF 11
 TITLE: (K1-10) DATA PATH (INT ADRS DEC)
 SIZE CODE: D CS
 NUMBER: M7094-0-1
 REV: D

REV. D
 NUMBER 1-10894-0-1
 CS M7094-0-1
 D



THIS DRAWING AND SPECIFICATIONS
HEREIN ARE THE PROPERTY OF
DIGITAL EQUIPMENT CORPORATION AND
SHALL NOT BE REPRODUCED OR COPIED
OR USED IN WHOLE OR IN PART AS
THE BASIS FOR THE MANUFACTURE OR
SALE OF ITEMS WITHOUT WRITTEN
PERMISSION. COPYRIGHT © 1979,
DIGITAL EQUIPMENT CORPORATION.

REVISIONS	
CHK	CHANGE NO. REV.

digital DRN: 7
CHK: 0

DATE: 18-OCT-79
DATE: 11-44

ENG: [Signature]
DATE: 11-44

BOARD LOCATION: 11 OF 11

TITLE: (K1-11) DATA PATH (KT ADDERS)

SIZE CODE: D CS
NUMBER: M7094-0-1
REV.: D

160,257 JK111B.DRW 116-OCT-79 14:51 NEXT HIGHER ASSEMBLY: B-DD-M7094-0

FIRST USED ON OPTION MODEL: 11/44

LINE	ITEM	DOCUMENT NUMBER	PART NUMBER	DESCRIPTION	QTY	PER VARIATION	REFERENCE DESIGNATOR
					00		
1	1		5013557-00	ETCHED CIRCUIT BOARD	1		
2	2		1000076-00	39 MFD 10V 10% S.TANT	6		C1-C6
3	3		1012121-00	220.0 MMF 100V 1x200PPM MICA	1		C43
4	4		1012784-00	.047 MFD 50V +80-20% CER	36		C7-C42
5	5		1210711-02	/REPLACED BY 12-16988-02	1		
6	6		1215006-02	SOCKET 16PIN IC LOW PROFILE	1		XE42
7	7		1215006-03	SOCKET 18PIN IC LOW PROFILE	1		XE84
8	8		1215006-07	SOCKET 28PIN IC LOW PROFILE	3		XE82, XE103, XE114
9	9		1300316-00	470.0 .25 W 5.0 % CC	14		R1-R5, R7, R9, R11, R15-R19, R22
10	10		1300365-00	1.0 K .25 W 5.0 % CC	4		R6, R8, R10, R12
11	11		1302931-00	49.90 .25 W 1.0 % RN55D-F10	1		R21
12	12		1303114-00	1.0 K .25 W 1.0 % RN55D-F10	1		R20
13	13		1909050-00	7475 LATCH 4BIT	2		E89, E106
14	14		1910531-00	DEC 745181 ALU-4BIT	4		E17, E27, E37, E47
15	15		1910532-00	74500 NAND GATE-QUAD 2IN	3		E44, E107, E117
16	16		1910533-00	74503 NAND GATE-QUAD 2IN, 0	1		E120
17	17		1910534-00	74504 INVERTER GATE-HEX 1I	3		E49, E85, E119
18	18		1910535-00	74505 INVERTER GATE-HEX 1	1		E51
19	19		1910536-00	74510 NAND GATE-TRIPLE 3IN	3		E53, E109, E118
20	20		1910537-00	74511 AND GATE-TRIPLE 3INP	3		E22, E45, E116
21	21		1910540-00	74522 NAND GATE-DUAL 4INPU	1		E83
22	22		1910544-00	74574 FF-D DUAL, EDGE TRIGG	3		E54, E55, E96
23	23		1910547-00	745153 MUX 1 OF 4 (DUAL)	1		E14
24	24		1910548-00	745157 MUX 1 OF 2 (QUAD)	12		E2, E9, E15, E19, E26, E39, E40, E62, E64, E97, E100, E105
25	25		1910550-00	745174 FF-D HEX	1	CONT	E86
26	26		1910552-00	745194 SHIFT REG. 4BIT RIGH	8		E4, E5, E8, E10, E11, E20, E30, E31
27	27		1910957-00	745175 FF-D QUAD COMMON CLO	3		E16, E65, E111
28	28		1911271-00	74298 MUX 1 OF 4 W/STORA	1		E34
29	29		1911641-00	SN 745257 MUX, QUAD 2 TO 1	2		E3, E29

REVISION HISTORY		BASIC PART NO: M7094		DRN: K.FRIEDGEN		DATE:		D I G I T A L	
ENG	ECO NUMBER	REV	SECTION A OF H	CHK'D:	E.T.GERRY	DATE:	23-JAN-79	TITLE PARTS LIST	
---	INITIAL	A	SECTION VARIATION INDEX	CHK'D:	E.T.GERRY	DATE:	23-JAN-79	KD11-Z DATA PATH	
---	INIT	A	[A] 00	DES.ENG:	R.DAY	DATE:		DOCUMENT NUMBER	
R.D.	TW001	B	[B]	RESP.ENG.:	R.DAY	DATE:	23-JAN-79	SIZE	CODE
RD	TW002	C	[C]	MFG.ENG.:	M.LACROIX	DATE:		NUMBER	REV
JK	M7094-TW003	D	[D]	ASSEMBLY NUMBER:		TOP DOCUMENT NUMBER:		K	PL
			[E]	D-UA-M7094-0-0				M7094-0-DBP	D
			[F]					FILE NAME:	EDIT #
			[G]					Z0383.PLS	21
			[H]						
			[I]						
			[J]						
			[K]						
			[L]						
			[M]						
			[N]						

"THIS DRAWING AND SPECIFICATIONS HEREIN, ARE THE PROPERTY OF DIGITAL EQUIPMENT CORPORATION AND SHALL NOT BE REPRODUCED OR COPIED OR USED IN WHOLE OR IN PART AS THE BASIS FOR THE MANUFACTURE OR SALE OF ITEMS WITHOUT WRITTEN PERMISSION. COPYRIGHT (C) 1981. DIGITAL EQUIPMENT CORPORATION"

AUTOMATED BY PRTLST.3G(17)

PARTS LIST

SHEET A2 OF A2

LINE	ITEM	DOCUMENT NUMBER	PART NUMBER	DESCRIPTION	QTY	PER VARIATION	REFERENCE DESIGNATOR
					00		
30	30		1911983-00	745133 NAND GATE-POSITIVE 1	1		E72
31	31		1916310-00	RAM 256X1 TRI STATE	1		E87
32	32		1912089-00	74585 CMPRTR-4BIT MAGNITUD	2		E81, E92
33	33		1912096-00	DEC 74586 XOR GATE, QUAD 2IN	1		E50
34	34		1912097-00	SN 745182 LOOK AND CARRY GEN	2		E28, E110
35	35		1912388-00	74502 NOR GATE-QUAD 2IN, PO	2		E1, E13
36	36		1912389-00	74508 AND GATE-QUAD 2IN, PO	3		E60, E61, E73
37	37		1912586-00	DM 85568N REGISTER, 64BIT EDGE	4		E6, E7, E18, E48
38	38		1912660-00	745253 MUX 1 OF 4 (DUAL)	16	CONT	E23, E24, E32, E33, E35, E43, E56, E57, E75, E78-E80, E88, E90, E102, E112, E12, E52, E63, E74, E108
39	39		1913340-00	74532 OR GATE-QUAD 2IN	5		E21
40	40		1913462-00	745240 OCTAL BUFFER, INVERTI	1		E36, E46
41	41		1913493-00	745241 OCTAL BUFFER, TRI-STA	2		E71, E77, E91, E93-E95, E104, E115
42	42		1913670-00	745373 LATCH 8BIT TRASP TR	8		E76, E101
43	43		1913671-00	745374 FF-D OCTAL TRISTATE	2		E98, E99, E113, E122
44	44		1913700-00	745381 ALU-4BIT	4		E25, E38
45	45		1914085-00	745260 NOR GATE-DUAL POS	2		
46	46		1914558-00	*** THIS ITEM IS NOT USED ***	-		
47	47		1915697-00	RAM 256X4 TRI-STATE	7		E58, E59, E66-E70
48	48		23164A2-00	A2-05	1		E42
49	49		23023C6-00	C6-01	1		E114
50	50		23444F1-00	F1-02	1		E84
51	51		9000024-01	EYELET, ROLL FLANGE .1210DX .192	12		
52	52		1911637-00	74132 NAND GATE-QUAD 2 IN	1		E121
53	53		23024C6-00	C6-01	1		E103
54	54		23025C6-00	C6-01	1		E82
55	55		23000F1-01	*** THIS ITEM IS NOT USED ***	-		
56	56		9105740-55	WIRE(WRAP)30AWG UL1423	1		

D	I	G	I	T	A	L	TITLE	SECTION A OF A	SIZE	CODE	DOCUMENT NUMBER	REV
							KD11-Z DATA PATH		K	PL	M7094-0-DBP	D