

This drawing and specifications herein, are the property of Digital Equipment Corporation and shall not be reproduced or copied or used in whole or in part as the basis for the manufacture or sale of items without written permission.

PARTS REFERENCE

ITEM NO	DRAWING REFERENCE	DESCRIPTION	PART NUMBER	QUANTITY
1	E3, E11, E18, E22, E27	DEC 7402N I.C.	1909004	5
2	E4, E23, E26	DEC 7450N I.C.	1905580	3
3	E5, E10	DEC 7453N I.C.	1905582	2
4	E6	DEC 8815A I.C.	1909713	1
5	E7, E15, E29, E20	DEC 74H74N I.C.	1909667	4
6	E8, E18, E21, E28	DEC 74H74N I.C.	1909667	4
7	E9	DEC 381 I.C.	909705	1
8	E13	DEC 74H30N I.C.	909059	1
9	E14, E24	DEC 7410N I.C.	905576	2
10	E16	DEC 74H00N I.C.	909056	2
11	E25	DEC 7460N I.C.	905581	1
12	E30	DEC 7420N I.C.	905577	1
13	C1-C26	.01MFD, 100V, 20% CAP.	1001610	26
14	C27-C28	6.8MFD, 35V, 20% CAP.	1000067	2

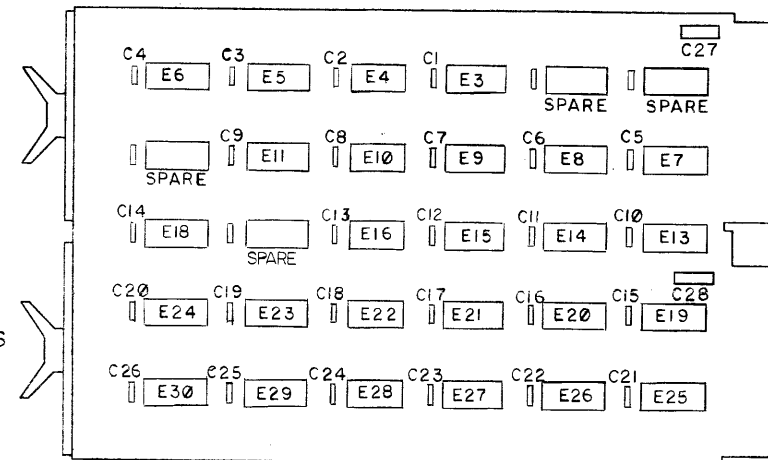
NOTES:

- PIN NOTATION THROUGHOUT IS ORDERED UPON MODULE PLACEMENT IN THE KAI1 PROCESSOR. MODULE REFERENCE ALONE IS OBTAINED BY DELETING THE NUMBER (SLOT LOCATION) AFTER THE FIRST LETTER, AND CONVERTING THE FIRST LETTER ACCORDING TO THE PIN NOMENCLATURE CHART AT RIGHT.
- ALL SIGNALS THAT HAVE MODULE PINS ARE SO NOTED; MULTIPLE NOTATIONS OF THE SAME SIGNALS WITHIN A MODULE HAVE THE PIN NOTED ON EACH. AN INPUT SIGNAL IS NOTED ONLY ONCE PER SHEET UNLESS SEPERATE PINS ARE USED; MULTIPLE INPUTS ARE CONNECTED. MODULE OUTPUT SIGNALS ARE BROUGHT TO THE EXTREME RIGHT OF EACH SHEET.
- PROCESSOR SIGNAL SOURCE NOTATION (K10-2, FOR EXAMPLE) IDENTIFIES THE SIGNAL SOURCE (PRINT AND MODULE). THE FIRST NUMBER AFTER THE K INDICATES THE MODULE PRINT SET, WHILE THE SECOND INDICATES THE SHEET WITHIN THE SET. IF ON A PRINT, THE FIRST NUMBER OF THE K PREFIXES COINCIDE FOR A SIGNAL NAME AND THE PRINT (SEE TITLE BLOCK), THE SIGNAL IS GENERATED ON THE MODULE. A DIFFERENCE IN THE FIRST NUMBER OF THE K PREFIXES INDICATES A SIGNAL GENERATED OFF THE MODULE. SIGNALS WITH A "BUS" PREFIX REPRESENT A "WIRED OR" SITUATION, AND MULTIPLE SOURCES FOR THE SIGNAL CAN EXIST.
- DETAILS ON COMPONENTS ARE NOTED IN THE PARTS REFERENCE, PLACEMENT IS NOTED IN THE COMPONENT PLACEMENT DIAGRAM.
- GND AND +5V ARE USUALLY PIN 7 AND PIN 14, RESPECTIVELY. EXCEPTIONS ARE:

IC TYPE	GND	+5V
DEC 7481	PIN 10	PIN 4
DEC 7482	PIN 11	PIN 4
8251	PIN 8	PIN 16
DEC 8271	PIN 8	PIN 16
DEC 380	PIN 1	PIN 8
DEC 384	PIN 1	PIN 8

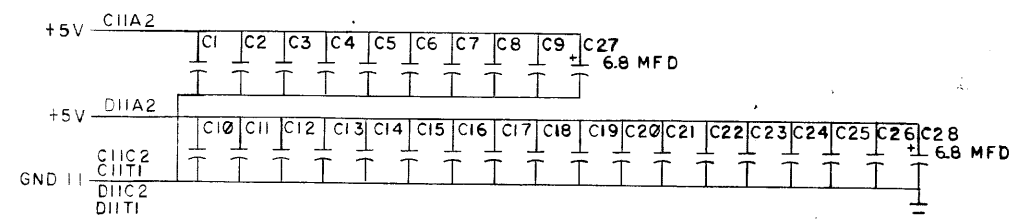
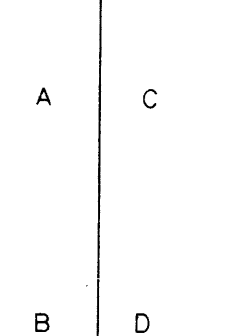
- UNLESS OTHERWISE NOTED: RESISTANCE IS IN OHMS; CAPACITANCE IS IN PICOFARADS. CAPACITORS WITHOUT ANY NOTED VALUES ARE .01 MFD.

COMPONENT PLACEMENT



PIN NOMENCLATURE

MODULE PROCESSOR

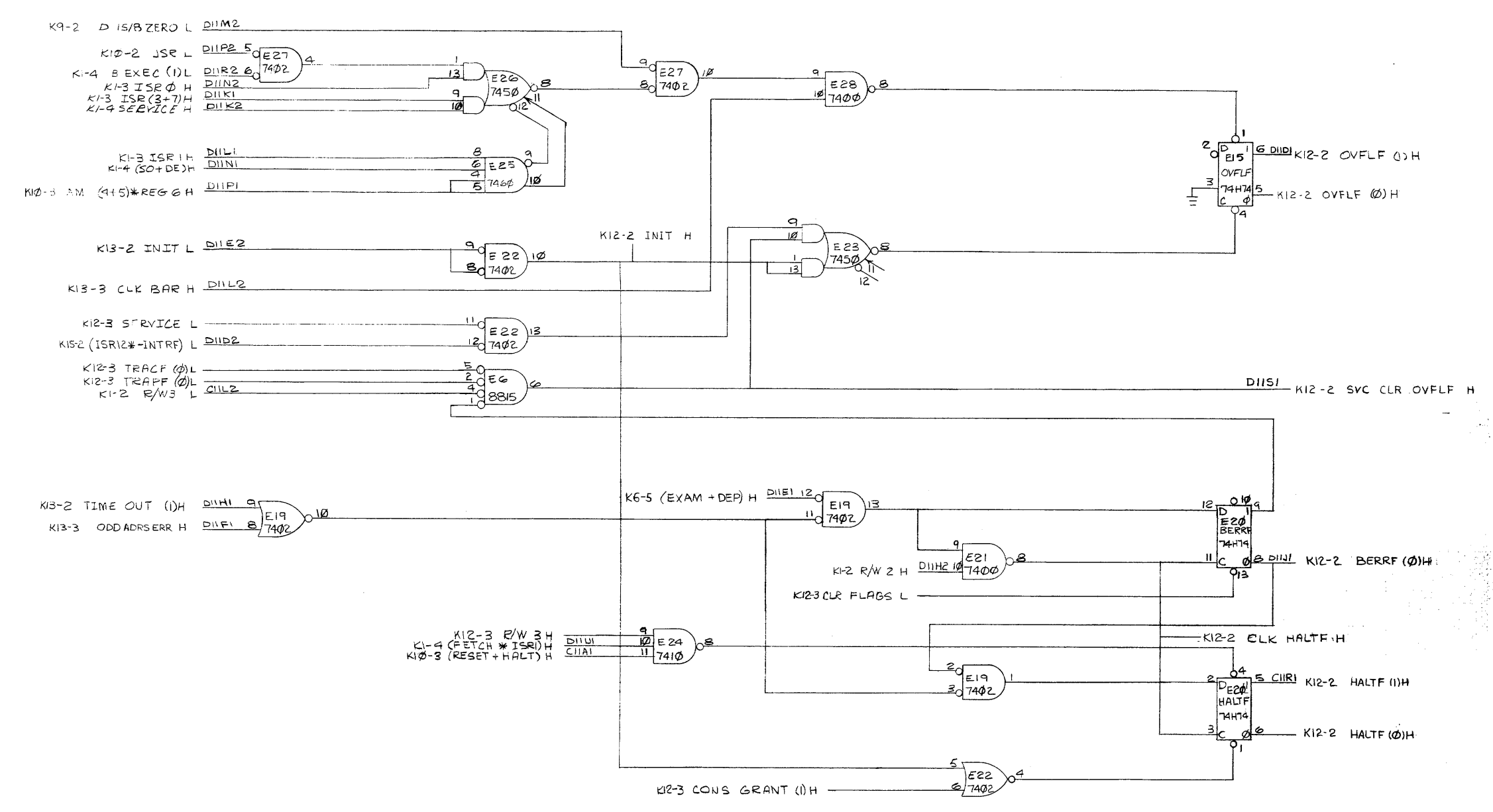


REV	NO	DATE	BY
1	1	3-2-70	CE Blane
2	1	3-6-70	CE Blane
3	1	3-6-70	CE Blane

FIRST USED ON OPTION/MODEL PDP 11	QTY.	DESCRIPTION	PART NO.	ITEM NO.
PARTS LIST				
UNLESS OTHERWISE SPECIFIED DIMENSION IN INCHES TOLERANCES DECIMALS FRACTIONS ANGLES ± .005 ± 1/64 ± 0°30' FINAL SURFACE QUALITY REMOVE BURRS AND BREAK SHARP CORNERS	DRN CE Blane	DATE 3-2-70	DIGITAL EQUIPMENT CORPORATION MAYNARD, MASSACHUSETTS	
MATERIAL	PROJ. ENG. CE Blane	DATE 3-6-70	TITLE FLAG CNTL	
FINISH	PROD.	DATE	M822 K12-1	
NEXT HIGHER ASSY A-ML-KAI1-0			SIZE CODE D/CS	NUMBER M822-0-1
SCALE			ETCH REV	B
SHEET 1 OF 3			REV. B	

REV. B
ITEM CODE NUMBER
D/CS M822-0-1

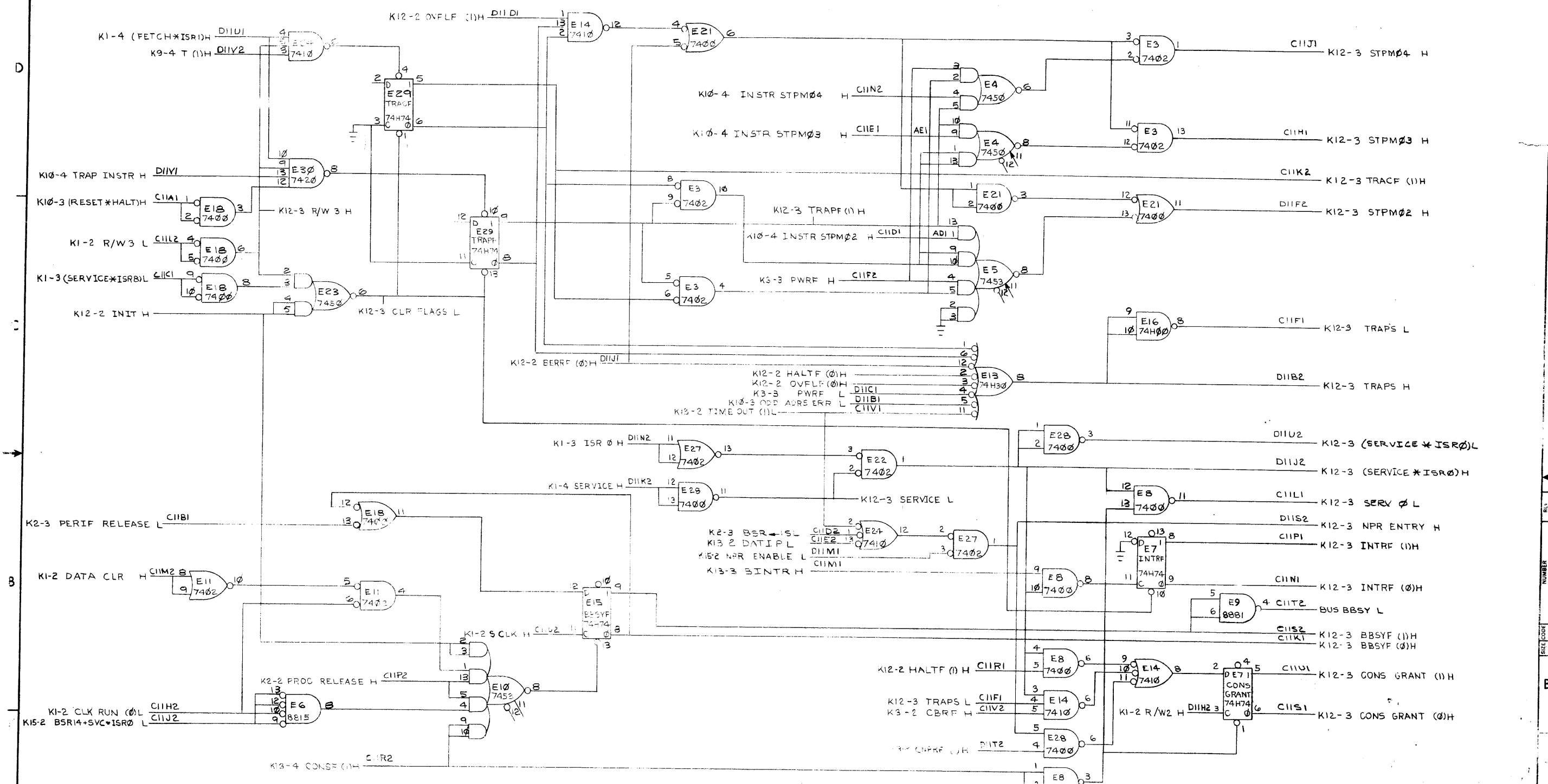
This drawing and specifications herein are the property of Digital Equipment Corporation and shall not be reproduced or copied or used in whole or in part as the basis for the manufacture or sale of items without written permission.



REV.	
CHG	

FIRST USED ON OPTION/MODEL PDP 11	QTY.	DESCRIPTION	PART NO.	ITEM NO.
PARTS LIST				
UNLESS OTHERWISE SPECIFIED	DATE	DATE	digital EQUIPMENT CORPORATION MAYNARD, MASSACHUSETTS	
UNLESS OTHERWISE SPECIFIED	DATE	DATE	TITLE	
DIMENSION IN INCHES	3/18/69	3/18/70	FLAG CNTL	
TOLERANCES	DATE	DATE	M822 K12-2	
DECIMALS FRACTIONS ANGLES	3-6-70	3-6-70	SIZE CODE NUMBER	
± .005 ± 1/64 ± 0°30'	DATE	DATE	DCS M822-01	
FINAL SURFACE QUALITY / REMOVE BURRS AND BREAK SHARP CORNERS	DATE	DATE	REV.	
MATERIAL	DATE	DATE	B	
NEXT HIGHER ASSY	SCALE NONE			
A-M-L-KA11-0	SHEET 2 OF 3			
FINISH	DIST.			

This drawing and specifications herein, are the property of Digital Equipment Corporation and shall not be reproduced or copied or used in whole or in part as the basis for the manufacture or sale of items without written permission.



REV.	CHANGE NO.

FIRST USED ON OPTION/MODEL	QTY.	DESCRIPTION	PART NO.	ITEM NO.
PDP 11				
UNLESS OTHERWISE SPECIFIED	DRN.	DATE	PARTS LIST	
UNLESS OTHERWISE SPECIFIED	CHK'D	DATE	digital EQUIPMENT CORPORATION MAYNARD, MASSACHUSETTS	
UNLESS OTHERWISE SPECIFIED	ENG.	DATE	TITLE	
UNLESS OTHERWISE SPECIFIED	PRJL ENG.	DATE	FLAG CNTL	
UNLESS OTHERWISE SPECIFIED	PROD.	DATE	MATERIAL	
UNLESS OTHERWISE SPECIFIED			FINISH	
			NEXT HIGHER ASSY	
			A-ML-KAII-0	
			SCALE NONE	
			SHEET 3 OF 3	
			SIZE CODE NUMBER REV.	
			DCS M822-01 B	
			DIST.	