

This drawing and specifications, herein, are the property of Digital Equipment Corporation and shall not be reproduced or used in whole or in part as the basis for the manufacture of any item without written permission.

PARTS REFERENCE

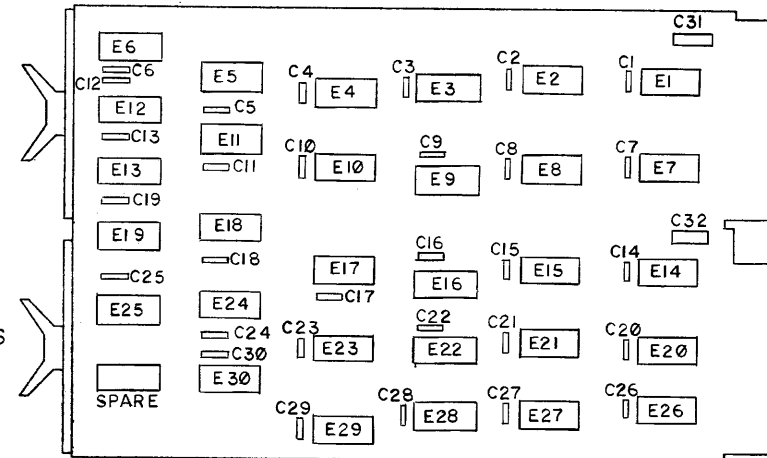
ITEM NO	DRAWING REFERENCE	DESCRIPTION	PART NUMBER	QUANTITY
1	E1, E6, E7, E21, E25	DEC 7400N	IC 1905575	5
2	E2, E14, E22	DEC 8815A	IC 1909713	3
3	E3, E4	DEC 7402N	IC 1909004	2
4	E5, E10, E30	DEC 7450N	IC 1905580	5
5	E8, E13, E16, E19, E27	DEC 7453N	IC 1905582	5
6	E9, E28	DEC 7410N	IC 1905576	2
7	F11, E12, E18, E23, E24, E26	DEC 7460N	IC 1905581	6
8	F15	DEC 7420N	IC 1905577	1
9	C1, C30	.01MFD 100V 20%	CAP 1001610	30
10	C31, C32	6.8MFD 35V 20%	CAP 1000067	2
11	F17	DEC 74H60N	IC 1909064	1
12	E20	DEC 74H00N	IC 1909056	1
13	E29	DEC 74H50N	IC 1909060	1

NOTES:

- PIN NOTATION THROUGHOUT IS ORDERED UPON MODULE PLACEMENT IN THE K411 PROCESSOR. MODULE REFERENCE ALONE IS OBTAINED BY DELETING THE NUMBER (SLOT LOCATION) AFTER THE FIRST LETTER, AND CONVERTING THE FIRST LETTER ACCORDING TO THE PIN NOMENCLATURE CHART AT RIGHT.
- ALL SIGNALS THAT HAVE MODULE PINS ARE SO NOTED; MULTIPLE NOTATIONS OF THE SAME SIGNALS WITHIN A MODULE HAVE THE PIN NOTED ON EACH. AN INPUT SIGNAL IS NOTED ONLY ONCE PER SHEET UNLESS SEPERATE PINS ARE USED; MULTIPLE INPUTS ARE CONNECTED. MODULE OUTPUT SIGNALS ARE BROUGHT TO THE EXTREME RIGHT OF EACH SHEET.
- PROCESSOR SIGNAL SOURCE NOTATION (K10-2, FOR EXAMPLE) IDENTIFIES THE SIGNAL SOURCE (PRINT AND MODULE). THE FIRST NUMBER AFTER THE K INDICATES THE MODULE PRINT SET, WHILE THE SECOND INDICATES THE SHEET WITHIN THE SET. IF ON A PRINT, THE FIRST NUMBER OF THE K PREFIXES COINCIDE FOR A SIGNAL NAME AND THE PRINT (SEE TITLE BLOCK), THE SIGNAL IS GENERATED ON THE MODULE. A DIFFERENCE IN THE FIRST NUMBER OF THE K PREFIXES INDICATES A SIGNAL GENERATED OFF THE MODULE. SIGNALS WITH A "BUS" PREFIX REPRESENT A "WIRED OR" SITUATION, AND MULTIPLE SOURCES FOR THE SIGNAL CAN EXIST.
- DETAILS ON COMPONENTS ARE NOTED IN THE PARTS REFERENCE. PLACEMENT IS NOTED IN THE COMPONENT PLACEMENT DIAGRAM.
- GND AND +5V ARE USUALLY PIN 7 AND PIN 14, RESPECTIVELY. EXCEPTIONS ARE:

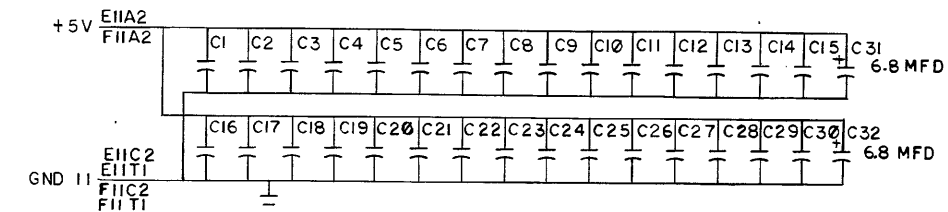
IC TYPE	GND	+5V
DEC 7481	PIN 10	PIN 4
DEC 7482	PIN 11	PIN 4
8251	PIN 8	PIN 16
DEC 8271	PIN 8	PIN 16
DEC 380	PIN 1	PIN 8
DEC 384	PIN 1	PIN 8
- UNLESS OTHERWISE NOTED: RESISTANCE IS IN OHMS; CAPACITANCE IS IN PICOFARADS. CAPACITORS WITHOUT ANY NOTED VALUES ARE .01 MFD.

COMPONENT PLACEMENT



PIN NOMENCLATURE

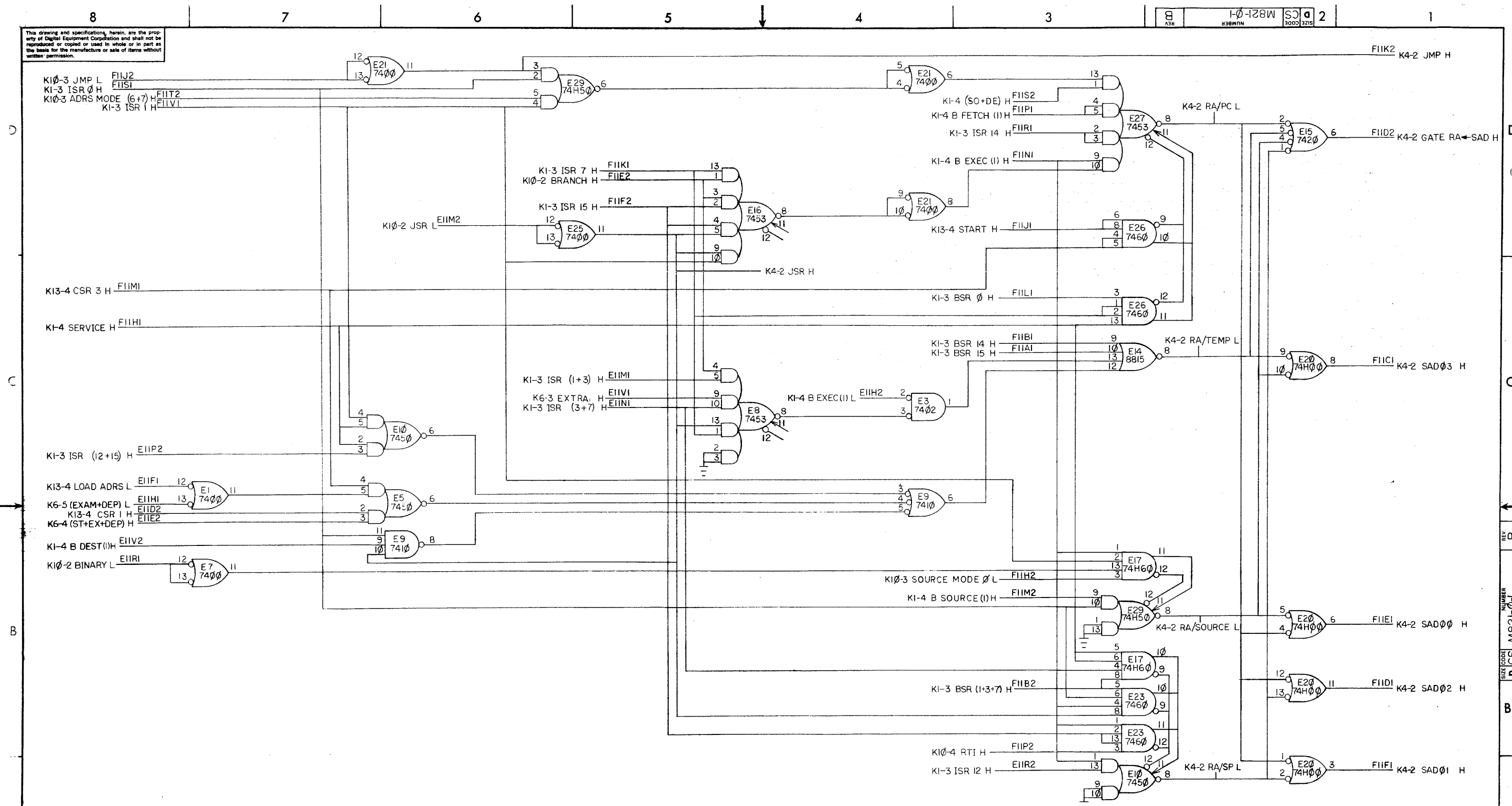
MODULE	PROCESSOR
A	E
B	F



FIRST USED ON OPTION/MODEL PDP 11	QTY.	DESCRIPTION	PART NO.	ITEM NO.
PARTS LIST				
UNLESS OTHERWISE SPECIFIED DIMENSION IN INCHES TOLERANCES DECIMALS FRACTIONS ANGLES = .005 = 1/64 = 0°30'	DRN <i>[Signature]</i>	DATE 3/28/70	digital EQUIPMENT CORPORATION MAYNARD, MASSACHUSETTS	
UNLESS OTHERWISE SPECIFIED FINAL SURFACE QUALITY REMOVE BURRS AND BREAK SHARP CORNERS	ENG <i>[Signature]</i>	DATE 3-6-70	TITLE REGISTER CNTL	
MATERIAL //	PROJ. ENG. <i>[Signature]</i>	DATE 3-6-70	M821 K4-1	
FINISH //	PROD. <i>[Signature]</i>	DATE 3/17/70	A-ML-K411-0	
SCALE SHEET 1 OF 3	NEXT HIGHER ASSY	SIZE CODE D CS	NUMBER M821-0-1	REV. B
ETCH REV B C			DIST. 1 Pin	

REV.	CHANGE NO.	BY	DATE
B	0001	J. O'LOUGHLIN	4/28/70

This drawing and specifications, herein, are the property of Digital Equipment Corporation and shall not be reproduced or copied or used in whole or in part as the basis for the manufacture or sale of items without written permission.



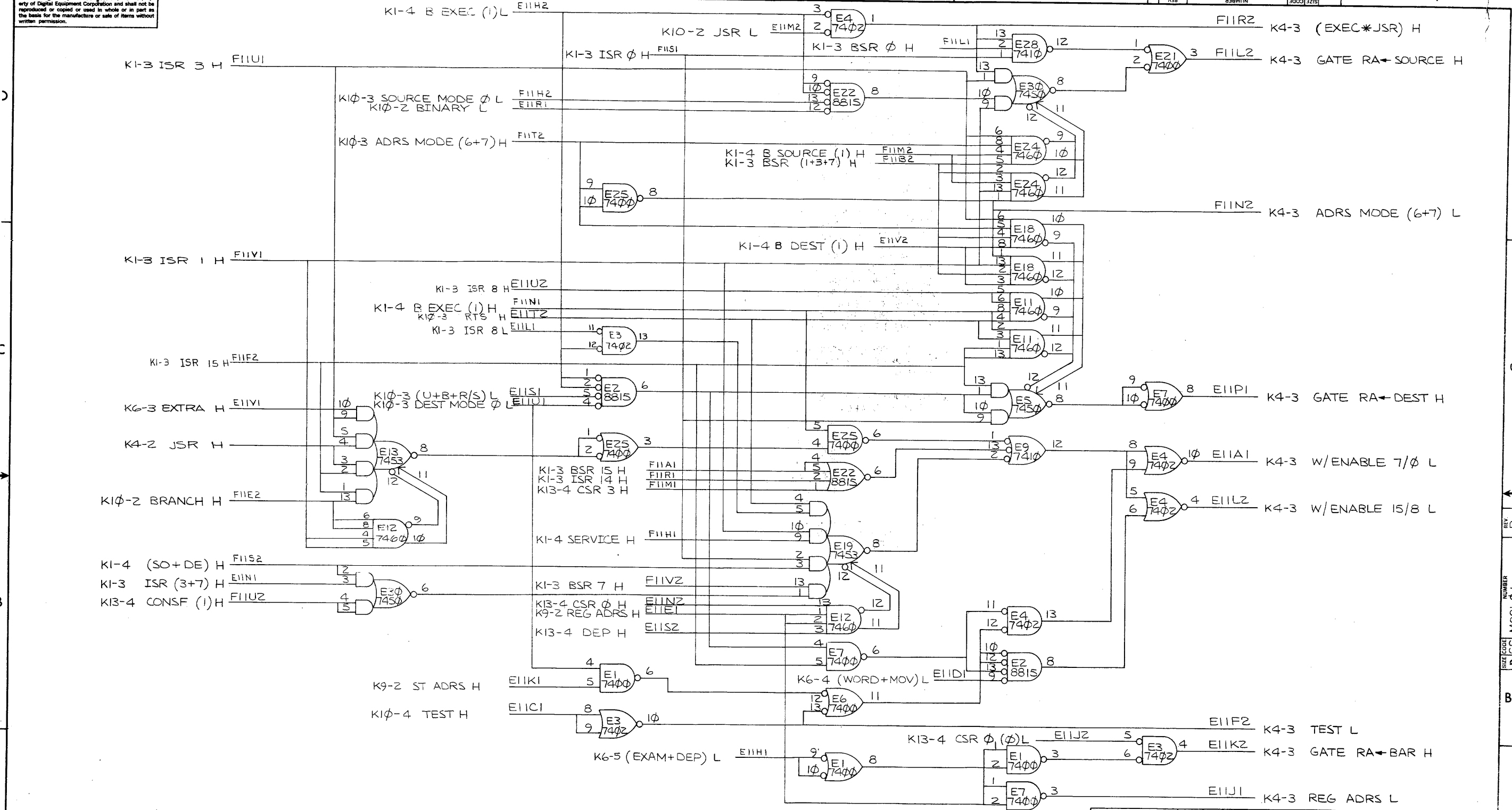
REV	
CHANGE NO.	
CHK	

DEC FORM NO. DRD 1024

FIRST USED ON OPTION/MODEL PDP11	QTY.	DESCRIPTION	PART NO.	ITEM NO.
PARTS LIST				
UNLESS OTHERWISE SPECIFIED DIMENSION IN INCHES	DRM	DATE	digital EQUIPMENT CORPORATION MAYNARD, MASSACHUSETTS	
UNLESS OTHERWISE SPECIFIED DIMENSION IN INCHES	CHK'D	DATE	TITLE	
TOLERANCES	ENG.	DATE	REGISTER CNTL	
DECIMALS FRACTIONS ANGLES	PROJ. ENG.	DATE	M821 K4-2	
± .005 ± 1/64 ± 0°30'	PROD. ENG.	DATE	A-ML-K411-0	
FINAL SURFACE QUALITY	FINISH	DATE	SCALE NONE	
REMOVE BURRS AND BREAK SHARP CORNERS			SHEET 2 OF 3	
MATERIAL	NEXT HIGHER ASSEMBLY		DIST.	
FINISH			1 Park	

REV. B
NUMBER M821-0-1
SIZE CODE DCS M821-0-1

This drawing and specifications, herein, are the property of Digital Equipment Corporation and shall not be reproduced or copied or used in whole or in part as the basis for the manufacture or sale of items without written permission.



REV	CHANGE NO	DATE
B	00001	4-22-70
J. O'LOUGHLIN		

FIRST USED ON OPTION/MODEL PDPII		QTY.	DESCRIPTION	PART NO.	ITEM NO.
UNLESS OTHERWISE SPECIFIED					
DIMENSION IN INCHES					
TOLERANCES					
DECIMALS FRACTIONS ANGLES					
± .005 ± 1/64 ± 0°30'					
FINAL SURFACE QUALITY					
REMOVE BURRS AND BREAK SHARP CORNERS					
MATERIAL	NEXT HIGHER ASSY		PARTS LIST		
+	A-ML-K411-0		digital EQUIPMENT CORPORATION		
+	SCALE NONE		MAYNARD, MASSACHUSETTS		
FINISH		SHEET 3 OF 3	TITLE		
+		DIST.	REGISTER CNFL		
			M821 K4-3		
			SIZE CODE NUMBER REV		
			DCS M821-01 B		