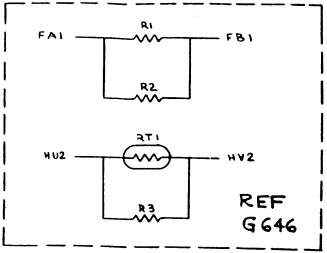


ITEM NO.	DESCRIPTION	QUANTITY	REF. NO.	REV.
1	8K X 12 BIT STACK	1		
2		
3		
4		
5		
6		
7		
8		
9		

STACK SCHEMATIC
8K X 12 BIT

D-00-MEM-EJ
CS-1212-0-1

This drawing and associated forms, are the property of Hughes Aircraft Company and shall not be reproduced or copied in whole or in part without the express written consent of Hughes Aircraft Company.



ETCH JUMPERS
JY2-HB1
JU2-HA1
EB1-EV2
EA1-EU2

- NOTES:
1. UNLESS OTHERWISE SPECIFIED: IC'S E1-E24 ARE TO BE DEC STOCK #25011.
 2. INDICATES STACK LINE NUMBER. (TV#)
 3. INDICATES CURRENT LOOP.
 4. INDICATES MAGNET WIRE TERMINATION (SOLDERED TO P.C. PAD).
 5. 25011 (DEC. PT. NO. 1910010-01) MAY BE USED INTERCHANGEABLY WITH ITEM #2

SEE NOTE 4

- ES2 - OINH
- ET2 - OINH
- ET1 - OSB
- ES1 - OSA
- FN4 - OINH
- FP2 - OINH
- FP1 - OSB
- FN1 - OSA
- EV2 - OINH
- EV1 - OSB
- EL1 - OSA
- EV2 - OINH
- EK2 - OINH
- EK1 - OSB
- EF1 - OSA
- FF2 - OINH
- FF1 - OSB
- FF1 - OSA
- FE2 - OINH
- ED2 - OINH
- ED1 - OSB
- EC1 - OSA
- HS2 - OINH
- HT2 - OINH
- HT1 - OSB
- HS1 - OSA
- HN2 - OINH
- HP2 - OINH
- HP1 - OSB
- HN1 - OSA
- HL2 - OINH
- HM2 - OINH
- HM1 - OSB
- HL1 - OSA
- HY2 - OINH
- HK2 - OINH
- HK1 - OSB
- HL1 - OSA
- HE2 - OINH
- HE1 - OINH
- HE1 - OSB
- HE1 - OSA

	EK1 XS170	ET2 XS160	ET1 XS150	FN4 XS140	FP2 XS130	FP1 XS120	FN1 XS110	EV2 XS100	EV1 XS070	EL1 XS060	EV2 XS050	EC1 XS040	ET2 XS030	YS2 XS020	YS1 XS010	YF2 XS000	YJ1 YS070	YJ2 YS060	YF1 YS050	YH2 YS040	YH1 YS030	YH2 YS020	YH1 YS010	YJ1 YS000	
BIT 0	8-0670	9-0710	11-0750	2-0790	7-0830	5-0870	3-0910	2-0950	11-0990	12-01030	9-01070	8-01110	2-01150	3-01190	5-01230	7-01270	[ET2] XNWD7								[YJ1] YNWD7
BIT 1	1-0660	5-0700	3-0740	2-0780	7-0820	11-0860	12-0900	8-0940	7-0980	3-01020	3-01060	2-01100	7-01140	11-01180	12-01220	8-01260	[ES2] XNWD6								[YJ2] YNWD6
BIT 2	2-0650	3-0690	12-0730	3-0770	11-0810	7-0850	7-0890	8-0930	2-0970	3-01010	2-01050	5-01090	11-01130	7-01170	9-01210	8-01250	[EE2] XNWD5								[YJ3] YNWD5
BIT 3	12-0640	11-0680	8-0720	7-0760	2-0800	3-0840	7-0880	5-0920	11-0960	11-01000	8-01040	2-01080	3-01120	7-01160	5-01200	5-01240	[EP2] XNWD4								[YJ4] YNWD4
BIT 4	7-0630	8-0670	5-0710	9-0750	11-0790	2-0830	11-0870	11-0910	8-0950	8-01000	7-01040	5-01080	11-01120	3-01160	7-01200	5-01240	[EM2] XNWD3								[YJ5] YNWD3
BIT 5	5-0620	7-0660	3-0700	2-0740	7-0780	11-0820	11-0860	11-0900	8-0940	8-01000	7-01040	5-01080	11-01120	3-01160	7-01200	5-01240	[EN2] XNWD2								[YJ6] YNWD2
BIT 6	11-0610	11-0570	9-0630	8-0690	2-0750	3-0810	5-0870	7-0930	3-0990	2-01050	2-01110	1-01170	11-01230	9-01290	7-01350	8-01410	[EL2] XNWD1								[YJ7] YNWD1
BIT 7	9-0600	8-0560	7-0520	5-0480	12-0440	11-0400	8-0360	9-0320	2-0280	3-0240	7-0200	5-0160	12-0120	11-0080	9-0040	9-0000	[EJ2] XNWD0								[YJ8] YNWD0

FIRST USED ON (OR THOROUGH)	QTY.	DESCRIPTION	PART NO.	ITEM NO.
MM6-EJ				
UNLESS OTHERWISE SPECIFIED DIMENSIONS IN INCHES TOLERANCES				
DECIMALS	ANGLES	DATE: 12/1/72		
±.005	±.010	DRAWN BY: [Signature]		
CHECKED BY: [Signature]				
APPROVED BY: [Signature]				
TITLE: STACK SCHEMATIC 8K X 12BIT				
MATERIAL: B-DD-MM6-EJ				
PART NO.: B-DD-MM6-EJ				
REV. E				