

**KE8-E extended
arithmetic element
engineering drawings**

MASTER DRAWING LIST

MAINTENANCE MANUALS		UNIT VARIATIONS																						
NO.	TITLE																							
KE8-E	EXT ARITH ELEM	X																						

USED ON OPTIONS	
PDP8-E	
PDP8-M	
PDP8-F	

REV.	DATE	CHG. NO.	APP'D.	REVISIONS
A	2/72	KE8E	<i>[Signature]</i>	
B	4/72	KB8E	<i>[Signature]</i>	
C	4/72	00002		
		00003		

DRN. K. GULICK	DATE 7-26-71
CHK'D. K. GULICK	DATE 7-26-71
ENG. <i>[Signature]</i>	DATE 8/19/71
PROJ. ENG. <i>[Signature]</i>	DATE 8/18/71
PROD. <i>[Signature]</i>	DATE 8/18/71

FIRST USED ON PDP8-E

SCALE NONE

SHEET 1 OF 2

SIZE	CODE	NUMBER	REV.
A	ML	KE8-E	C

digital EQUIPMENT CORPORATION
MAYNARD, MASSACHUSETTS

TITLE
EXTENDED ARITH ELEMENT

PRINT SET		DWG. NO.	REV. NO. OF LET. SHEETS	TITLE	OPTION NO.
X		D-UA-KE8-E-0	1	EXTENDED ARITH ELEMENT	
X		A-PL-KE8-E-0	1	EXTENDED ARITH ELEMENT (PL)	
X		E-CS-M8340-0-1	#	DECODER & STEP COUNTER EAE	
X		E-CS-M8341-0-1	#	MULTIPLEXER & TIMING GEN EAE	
X		B-UA-H851-0-0	1	H851 EDGE CONNECTOR	MM8-E
X		D-FD-KE8-E-1	1	EAE FLOW DIAGRAM	
X		D-FD-KE8-E-2	A	ROM ENCODING FOR EAE CONT	
		DEC 8E DOLA-PB		KE8/E EAE INSTRUCTION TEST 1	
		DEC 8E DOLA-D		KE8/E EAE INSTRUCTION TEST 1	
		DEC 8E DOMA-PB		KE8/E EAE INSTRUCTION TEST 2	
		DEC 8E DOMA-D		KE8/E EAE INSTRUCTION TEST 2	
		A-SP-KE8-E-3	1	ENGINEERING SPECIFICATIONS	
X		A-SP-KE8-E-4	1	ACCEPTANCE PROCEDURE	
		A-SP-KE8-E-5	1	CHECKOUT PROCEDURE	
X		A-AL-KE8-E-6	1	ACCESSORY LIST	

TITLE	EXTENDED ARITH ELEMENT	SHEET 2 OF 2	SIZE	CODE	NUMBER	REV.
			A	ML	KE8-E	C

DIGITAL EQUIPMENT CORPORATION MAYNARD, MASSACHUSETTS			ACCESSORY LIST		LEGEND		QUANTITY / VARIATION											
MADE BY J. McCluskey		CHECKED <i>J. McCluskey</i>		SECTION		D	DOCUMENT											
DATE 4/19/72		DATE 2/9/72				DN	DOCUMENT CHANGE NOTICE											
ENG L. Klotz		PROD <i>J. McCluskey</i>		ISSUED SECT.		PA	PAPER TAPE ASCII											
DATE 4/19/72		DATE 4/19/72				PB	PAPER TAPE BINARY											
						PM	PAPER TAPE READ-IN-MODE											
ITEM NO.	DWG NO. / PART NO.	DESCRIPTION				KE8-E							KIT CHECK	BY	DATE	INSTALLATION CHECK	BY	DATE
1	M8340	EAE Decoder and Stepcounter module				1												
2	M8341	EAE Multiplexer and Timing Generator Module				1												
3	H851	Edge Connectors				3												
4	LIBKIT-8E-KE8-E	Program Library Kit For KE8-E				1												
5	KE8-E	KE8-E Maintenance Manual				1												
		Note: It item 5 is temporarily waived ship the following.																
	A-SP-KE8-E-3	KE8-E Engineering Specifications				1												
	A-SP-KE8-E-4	KE8-E Acceptance Procedure				1												
TITLE		ASSY. NO.		SIZE CODE		NUMBER		REV.		ECO NO								
Accessory List. <input checked="" type="checkbox"/>				A AL		KE8-E-6												
SHEET OF		DIST.																

DIGITAL EQUIPMENT CORPORATION
MAYNARD, MASSACHUSETTS
PARTS LIST

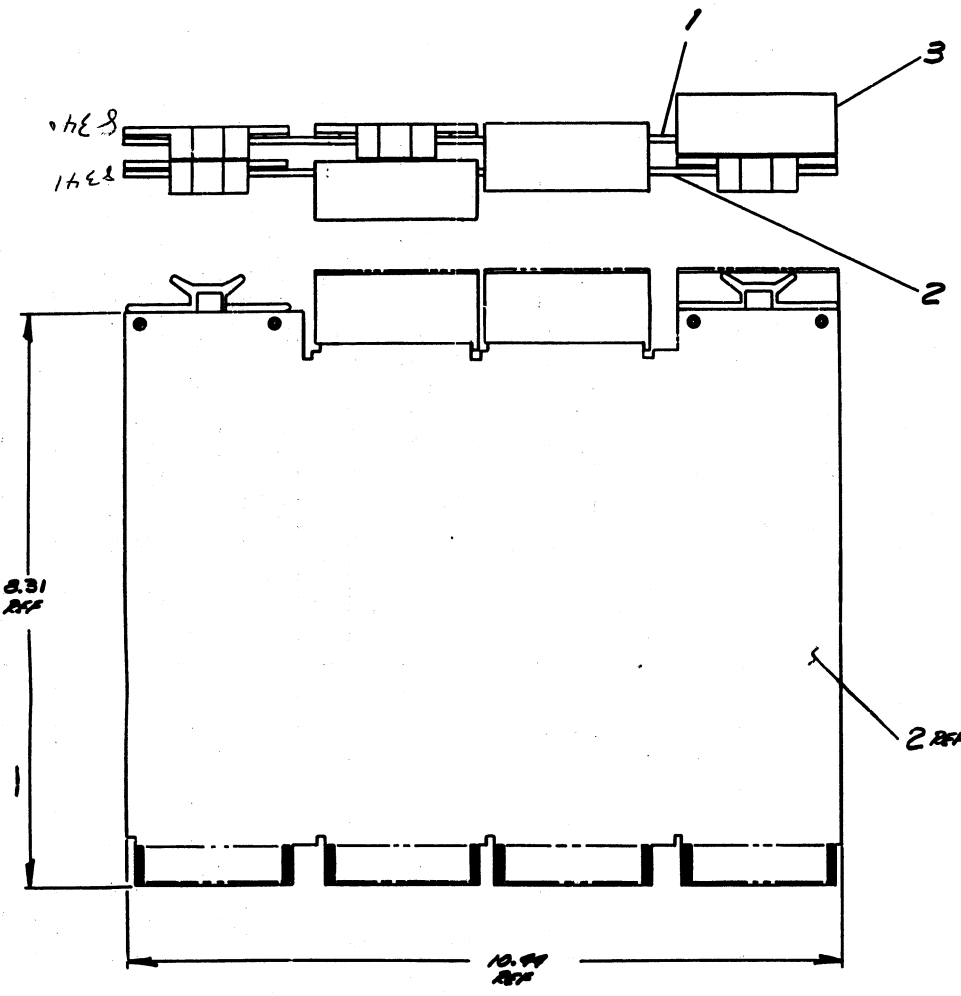
DIGITAL EQUIPMENT CORPORATION MAYNARD, MASSACHUSETTS PARTS LIST			QUANTITY / VARIATION												
MADE BY KEN GULICK	CHECKED KEN GULICK	SECTION 1	KE8-E												
DATE 7/28/71	DATE 7/29/71	ISSUED SECT. 1													
ENG <i>R. Daniel W. Whitem</i>	PROD <i>R. Peters</i>	1													
DATE 8/18/71	DATE 8/19/71	1													
ITEM NO.	DWG NO. / PART NO.	DESCRIPTION													
1	E-CS-M834 \emptyset - \emptyset -1	DECODER & STEP COUNTER EAE	1												
2	E-CS-M8341- \emptyset -1	MULTIPLEXER & TIMING GEN. EAE	1												
3	B-UA-H851- \emptyset - \emptyset	H851 EDGE CONNECTOR	3												

TITLE EXTENDED ARITH ELEMENT	ASSY NO. D-UA-KE8-E- \emptyset	SIZE CODE A PL	NUMBER KE8-E- \emptyset	REV.	ECO NO.
SHEET 1 OF 1		DIST.			

This drawing and specifications, herein, are the property of Digital Equipment Corporation and shall not be reproduced or copied in whole or in part as the basis for the manufacture or sale of items without written permission.

D
C
B
A

D
C
B
A



2.31
REF

10.74
REF

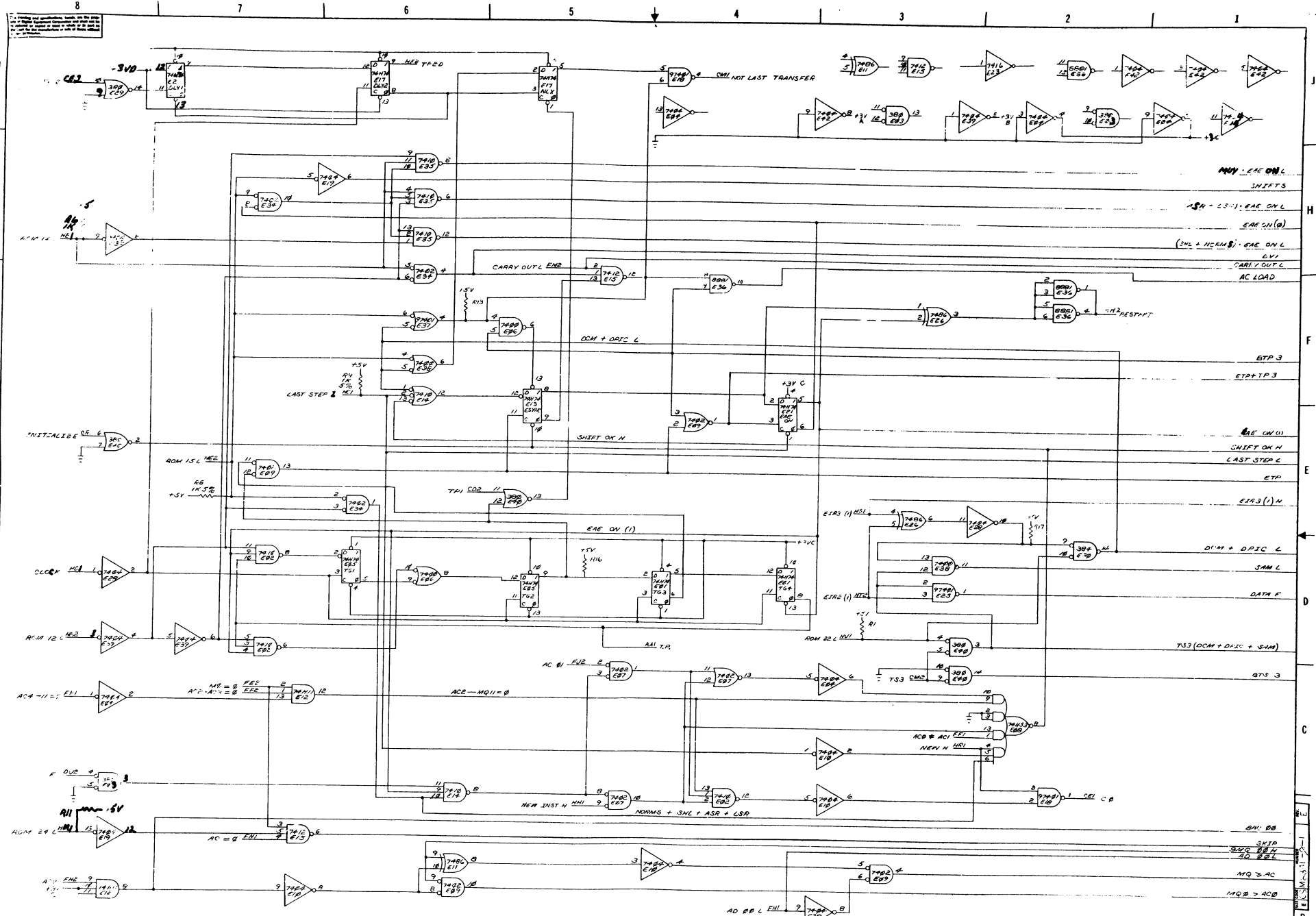
2 REF

1 KE8
1 KE8

REV.	
CHG.	
NO.	

DEC FORM NO
DRD 100-A

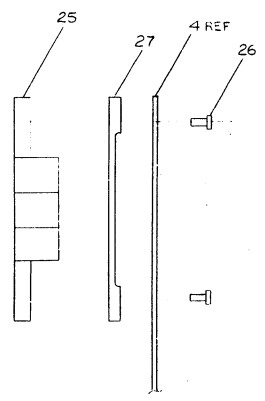
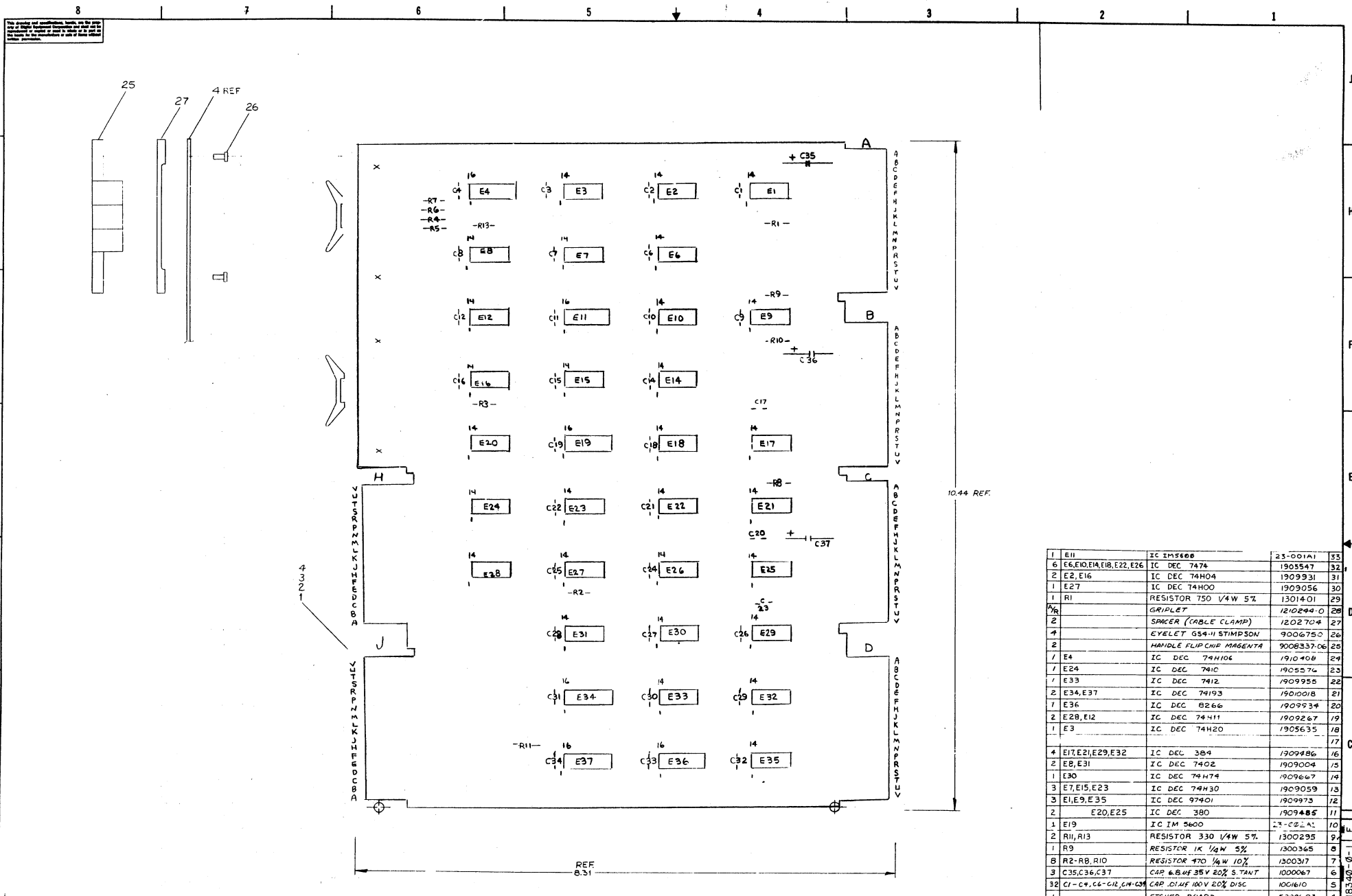
FIRST USED ON OPTION/MODEL	QTY.	DESCRIPTION	PART NO.	ITEM NO.
PDP8-E				
PARTS LIST				
UNLESS OTHERWISE SPECIFIED DIMENSION IN INCHES. TOLERANCES	DATE 2/21/71	DATE 2/21/71	 digital EQUIPMENT CORPORATION <small>MAYNARD MASSACHUSETTS</small>	
DECIMALS	CHK'D.	DATE		
ANGLES	ENG.	DATE		
.XXX - .005 .XX - .02 .X - .1	PROJ. ENG.	DATE		
REMOVE BURRS AND BREAK SHARP CORNERS SURFACE QUALITY ✓	PROP.	DATE	EXTENDED ARITH ELEMENT	
MATERIAL	NEXT HIGHER ASSY.		SIZE CODE	NUMBER
FINISH	SCALE	SHEET	DUA	KE8-E-Ø
		OF	DIST.	



REVISIONS
 CHANGES
 NO. 1
 8
 7
 6
 5
 4
 3
 2
 1

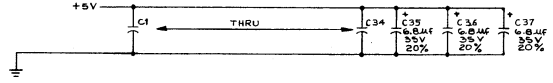
FIRST USE OR OPTION	QTY.	DESCRIPTION	PART NO.	ITEM NO.
UNLESS OTHERWISE SPECIFIED		EQUIPMENT CORPORATION		
TOLERANCES		DATE		
MATERIAL		DATE		
FINISH		DATE		
SCALE		DRAWING NO.		
SHEET		REV.		

TITLE: MULTIPLEXERS & TIMING GEN
 PART NO.: M6-41-0-1
 SCALE: 1/4" = 1"



4
N
Z
N

BC1, CC1, DC1,
AC2, BC2, CC2, DC2,
AF1, BF1, CF1, DF1,
AF2, BF2, CF2, DF2,
AN1, BN1, CN1, DN1,
AN2, BN2, CN2, DN2,
AT1, BT1, CT1, DT1,
AT2, BT2, CT2, DT2,



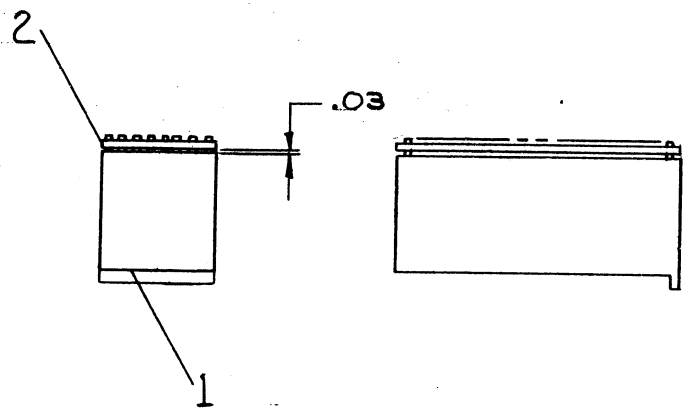
QTY	REF DESIGNATION	DESCRIPTION	PART NO.	REV
1	E11	IC IM5600	23-001A1	33
6	E6, E10, E1A, E1B, E22, E26	IC DEC 7474	1905547	32
2	E2, E16	IC DEC 74H04	1909931	31
1	E27	IC DEC 74H00	1903056	30
1	R1	RESISTOR 750 1/4W 5%	1301401	29
2		GRIPLET	1210244-0	28
2		SPACER (CABLE CLAMP)	1202704	27
4		EYELET GS4-11 STIMPSON	9006750	26
2		HANDLE FLIP CNF MAGENTA	9006337-06	25
1	E4	IC DEC 74H106	1910408	24
1	E24	IC DEC 7410	1905576	23
1	E33	IC DEC 7412	1909955	22
2	E34, E37	IC DEC 74193	19010018	21
1	E36	IC DEC 8266	1909934	20
2	E28, E12	IC DEC 74411	1909267	19
1	E3	IC DEC 74H20	1905635	18
				17
4	E17, E21, E29, E32	IC DEC 384	1909486	16
2	E8, E31	IC DEC 7402	1909004	15
1	E30	IC DEC 74H74	1909667	14
3	E7, E15, E23	IC DEC 74H30	1903059	13
3	E1, E9, E35	IC DEC 97401	1909973	12
2	E20, E25	IC DEC 380	1909485	11
1	E19	IC IM 5600	23-C02A1	10
2	R11, R13	RESISTOR 330 1/4W 5%	1300295	9
1	R9	RESISTOR 1K 1/4W 5%	1300365	8
8	R2-R8, R10	RESISTOR 470 1/4W 10%	1300317	7
3	C35, C36, C37	CAP 6.8UF 35V 20% S TANT	1000067	6
32	C1-C4, C6-C12, C14-C34	CAP .01UF 100V 20% DISC	1001610	5
1		ETCHED BOARD	5009603	4
REF		MODULE ECO HISTORY	B-MH-MB340-04	3
REF		ASSY/DRILLING - HOLE LAYOUT	DAH-MB340-05	2
REF		X-Y COORDINATE HOLE LOCATION	KCC-MB340-04	1

IC TYPE	QTY	GRID	REF
DEC 74193	8	16	
DEC 8271	8	16	
DEC 384	1	8	
DEC 380	1	8	
DEC 7476	5	13	

LAYOUT BY: [Signature]
 DATE: 11/11/71
 TITLE: EAE DECODER & STEP COUNTER
 EQUIPMENT CORPORATION
 SEMICONDUCTOR CONVERSION CHART
 DEC NO. EIA NO. DEC NO. EIA NO.
 SCALE 2:1
 SHEET 1 OF 2

This drawing and specifications, herein, are the property of Digital Equipment Corporation and shall not be reproduced or copied or used in whole or in part as the basis for the manufacture or sale of items without written permission.

REV. B SIZE CODE NUMBER 0-0-198H40 2 1



REF	MODULE ECO HISTORY	B-MH-H851-0-6	5
REF	ASSY HOLE LAYOUT	C-AH-H851-0-5	4
REF	CIRCUIT SCHEMATIC	B-CS-H851-0-1	3
1	ETCH BOARD	D-IA-5008903-0-0	2
1	CONN BLOCK, 72 PIN	I210152	1

FIRST USED ON OPTION/MODEL	H851	
QTY.	DESCRIPTION	PART NO.
		ITEM NO.

PARTS LIST
digital EQUIPMENT CORPORATION
 MAYNARD, MASSACHUSETTS

TOLERANCES DECIMALS

.XXX	= ± .005
.XX	= ± .02
.X	= ± .1

UNLESS OTHERWISE SPECIFIED
 DIMENSION IN INCHES
TOLERANCES
 ANGLES ± 0°30'
 FINAL SURFACE QUALITY
 REMOVE BURRS AND BREAK SHARP CORNERS

MATERIAL

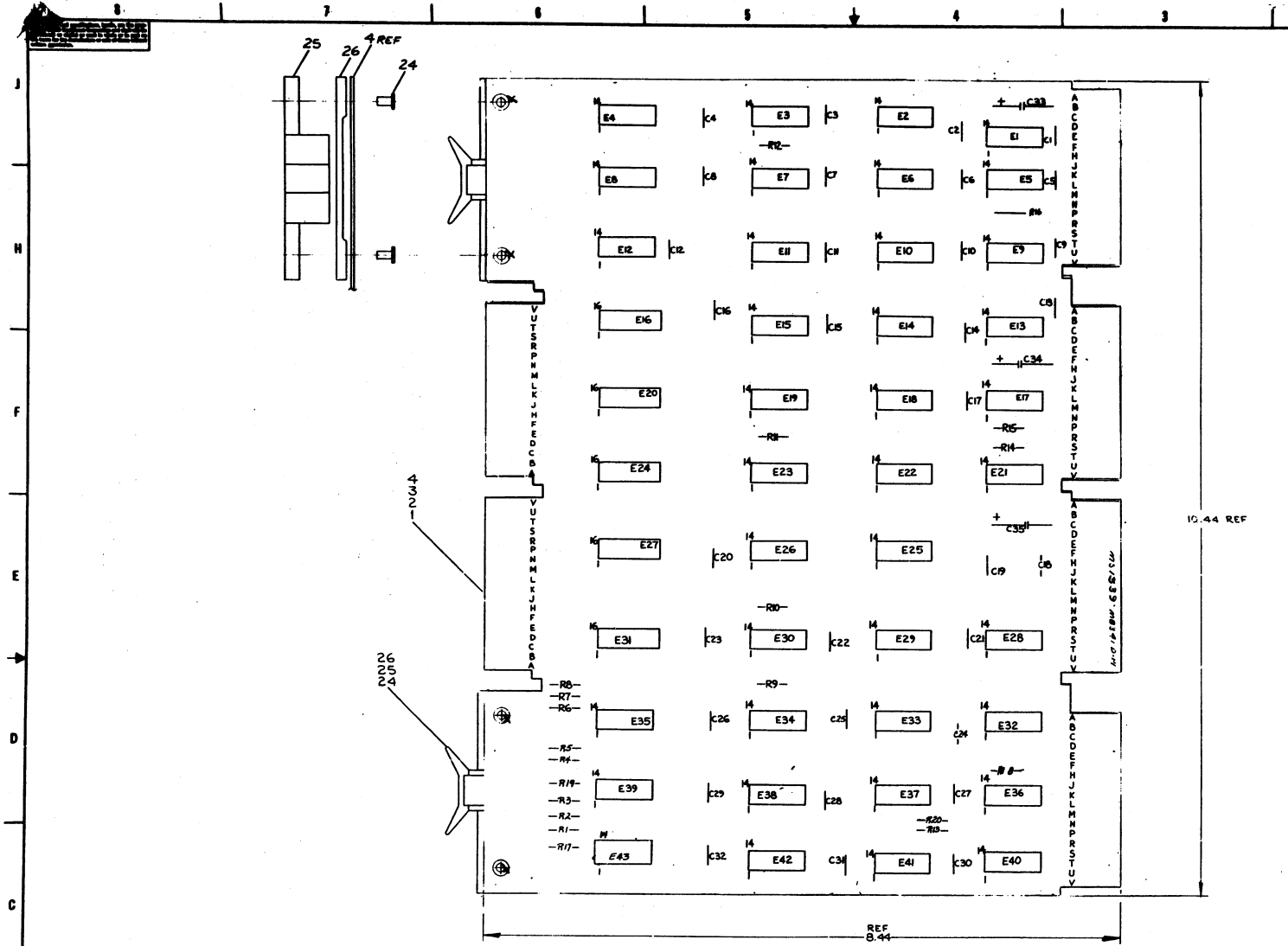
 FINISH

DRN. *A. Flandin* DATE 7/28/70
 CHK'D. *P. Davis* DATE 8/13/70
 ENG. *Jack Prime* DATE 8-13-70
 PROJ. ENG. *Jack Prime* DATE 8-13-70
 PROD. *P. Williams* DATE 8-13-70
 NEXT HIGHER ASSY

 SCALE _____
 SHEET 1 OF 1

TITLE
H851
EDGE CONNECTOR
 SIZE CODE NUMBER REV.
 B UA H851-0-0 B
 DIST. G

REV.	CHANGE NO.	REV.
A	H851-00001	A
P. Gardner 12-10-70		
P. Gardner 12-14-70		
B	H851-00002	B
B. Thiele 8-3-72		
P. Gardner		
Jack Prime For P.6 8-9-72		



NOTES:

1	E 43	IC DEC 8093	110837	28
2	E 1	GRIPLET	1210244-C	27
3	E 5	SPACER (CABLE CLAMP)	1202704	26
4	E 15	HANDLE, FLIP CHIP - MAGENTA	90C8337-04	25
5	E 20	EYELET GS+11 STIMPSON	90C6150	24
6	E 23	IC DEC 7412	1909953	23
7	E 23	IC DEC 7416	1909928	22
8	E 32, E 36, E 22	IC DEC 8801	1909705	21
9	E 12	IC DEC 74H11	1909267	20
10	E 7, E 9, E 34	IC DEC 74C2	1909004	19
11	E 4, E 10, E 19, E 28, E 39, E 42	IC DEC 74C4	1909686	18
12	E 2, E 14, E 33, E 35	IC DEC 7410	1905576	17
13	E 8	IC DEC 74H53	1909062	16
14	E 11, E 26	IC DEC 74B6	1910011	15
15	E 18, E 25, E 37	IC DEC 97401	1909473	14
16	E 3, E 29, E 40	IC DEC 380	1909485	13
17	E 16, E 20, E 24, E 27, E 31	IC DEC 8235	1909935	12
18	E 13, E 13, E 17, E 21, E 41	IC DEC 74H74	1909667	11
19	E 30	IC DEC 384	1909486	10
20	E 6, E 38	IC DEC 7400	1905575	9
21	E 6, E 8, E 9, E 15	RES 1K 1/4 W 5%	1903365	8
22	E 1, E 2, E 3, E 4, E 5, E 7, E 10, E 11, E 12, E 20, E 23, E 24, E 25, E 26, E 27, E 28, E 29, E 30, E 31, E 32, E 33, E 34, E 35, E 36, E 37, E 38, E 39, E 40, E 41, E 42, E 43	RES 470 1/4 W 10%	1903317	7
23	E 38, E 34, E 35	CAP 6.8MFD 35V20% TANT	1000047	6
24	E 1 THRU E 32	CAP. 0.1MFD 100V 20% DISC	1001670	5
25		ETCHED CIRCUIT BOARD	5009604	4
26		MODULE ECG HISTORY	B-MH-MB341-01	3
27		ASSY/DRILLING HOLE LAYOUT	D-AH-MB341-01	2
28		X-Y COORDINATE HOLE LOCATION	KCO-MB341-01	1

AA2	BA2	CA2	+5V	C1	C2	C3	C4	C5	C6	C7	C8	C9	C10	C11	C12	C13	C14	C15	C16	C17	C18	C19	C20	C21	C22	C23	C24	C25	C26	C27	C28	C29	C30	C31	C32	C33	C34	C35
-----	-----	-----	-----	----	----	----	----	----	----	----	----	----	-----	-----	-----	-----	-----	-----	-----	-----	-----	-----	-----	-----	-----	-----	-----	-----	-----	-----	-----	-----	-----	-----	-----	-----	-----	-----

AC2, AF1, AF2, AN1, AN2, AT1, AT2
 BC1, BC2, BF1, BF2, BN1, BN1
 CC1, CC2, CN1, DC1, DF1, DM1, DT1

REV	DATE	BY	CHKD	APP
1				
2				
3				
4				
5				
6				
7				
8				
9				
10				
11				
12				
13				
14				
15				
16				
17				
18				
19				
20				

1	2/1	3
2		
3		
4		
5		
6		
7		
8		
9		
10		
11		
12		
13		
14		
15		
16		
17		
18		
19		
20		

EQUIPMENT CORPORATION
 MULTIPLEXERS & TIMING GEN EAE
 ECS MB341-0-1

NOTES:
 1. IF ANY CHANGES ARE TO BE MADE TO THIS PRINT
 FIRST CHECK WITH PURCHASE SPEC'S A-PS-23-001A
 AND A-SP-23-002A1.

FDK E8-E-02

ROM 1
 ENABLE IF MAJOR STATE = F OR E
 EIR 3 → A
 EIR 2 → B
 EIR 1 → C
 EIR 0 - NEW → D
 EXECUTE → E

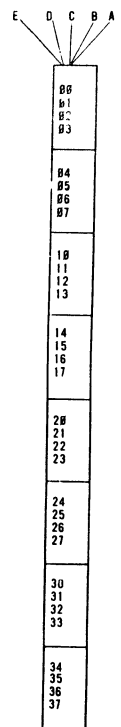
ROM 2
 ENABLE IF MAJOR STATE = F
 EIR 3 → A
 EIR 2 → B
 EIR 1 → C
 EIR 0 → D
 OLD → E

FUNCTION	Y1	Y2	Y3	Y4	Y5	Y6	Y7	Y8	OCTAL
F - NOP	1	1	1	1	1	1	1	1	377
F - ACS + SCL	1	1	1	1	1	1	1	1	377
F - MUY	1	1	1	1	0	0	1	1	371
F - DVI	1	1	1	1	1	1	1	1	377
F - NWI	0	1	1	0	0	0	1	1	143
F - SHL	0	1	1	1	1	1	1	1	377
F - ASR	0	1	1	1	1	0	1	1	171
F - LSR	1	1	1	1	1	0	0	1	371
F - SCA	1	1	1	1	1	1	1	1	377
F - DAD	1	1	1	1	1	0	1	1	371
F - DST	1	1	1	1	1	1	1	1	377
NOP	1	1	1	1	1	1	1	1	377
F - DPSZ	1	1	1	1	1	1	1	1	377
F - DPIC	1	0	0	1	1	0	0	1	231
F - DCM	1	0	0	1	1	0	0	1	231
F - SAM	1	1	0	1	1	0	0	1	331
E - NOP	1	1	1	1	1	1	1	1	377
E - SCL	1	1	1	1	1	1	0	1	376
E - MUY	1	0	1	1	0	1	1	1	267
E - DVI	1	0	1	0	0	0	0	1	241
NOT USED									X
E - SHL	0	1	1	0	0	0	1	0	142
E - ASR	1	1	1	1	0	1	1	0	366
E - LSR	1	1	1	1	1	1	0	0	366
NOT USED									X
E - DAD	1	1	0	1	1	0	1	1	331
E - DST	1	1	1	1	1	1	1	1	377
NOT USED									X
NOT USED									X
NOT USED									X
NOT USED									X

FUNCTION	Y1	Y2	Y3	Y4	Y5	Y6	Y7	Y8	OCTAL
NOP	1	1	1	1	1	1	1	1	377
ACS	0	1	1	1	1	1	1	1	177
NEW MUY	1	1	0	1	1	0	0	1	331
NEW DVI	1	1	0	1	1	0	0	1	331
NMI	1	1	0	1	1	1	1	1	337
SHL	1	1	1	1	1	0	1	1	372
ASR	1	1	1	1	1	0	1	0	372
LSR	1	1	1	1	1	0	1	0	372
SCA	1	1	1	1	0	1	1	1	367
DAD	1	1	1	1	1	0	0	1	371
DST	1	1	1	1	1	0	0	1	371
NOP	1	1	1	1	1	1	1	1	377
DPSZ	1	1	1	0	1	1	1	1	357
DPIC	1	0	1	1	1	1	1	1	277
DCM	1	0	1	1	1	1	1	1	277
SAM	1	0	1	1	1	1	1	1	277
NOP	1	1	1	1	1	1	1	1	377
SCL	1	1	1	1	1	1	0	1	372
OLD MUY	1	1	0	1	1	0	1	1	332
OLD DVI	1	1	0	1	1	0	1	0	332
NMI	1	1	0	1	1	1	1	1	337
SHL	1	1	1	1	1	0	1	0	372
ASR	1	1	1	1	1	0	1	0	372
LSR	1	1	1	1	1	0	1	0	372
SCA	1	1	1	1	0	1	1	1	367
SCA-SCL	1	1	1	1	0	0	1	0	362
SCA-OLD MUY	1	1	0	1	0	0	1	0	322
SCA-OLD DVI	1	1	0	1	0	0	1	0	322
SCA - NMI	1	1	0	1	1	1	1	1	327
SCA - SHL	1	1	1	1	0	1	1	0	362
SCA - ASR	1	1	1	1	0	1	1	0	362
SCA - LSR	1	1	1	1	0	1	1	0	362

B INDICATES ACB → LINK DATA AT TP3
 B INDICATES TO SLOW → ADD (NOT MERELY SHIFT)
 B INDICATES CARRY COUPLE AT TP3 (← CARRY IN, → CARRY OUT → DATA)
 B INDICATES LEFT SHIFT
 B INDICATES A SHIFT OPERATION
 B DISABLES CPU ADDER LINK GATING
 B INDICATES LINK LOAD AT TP3
 B INDICATES LOAD SC AT TP2

B INDICATES ACS
 B INDICATES DCM+SAM+DPIC
 B INDICATES B → SC AT F - TP3
 B INDICATES DPSZ
 B INDICATES SCA
 B INDICATES MA → I → MA, I → SKIP
 B INDICATES DSET
 B INDICATES ESET



CHK	REVISIONS	CHANGE NO	REV
		KE8E-00003	A
		E 3 5 R	

FIRST USED ON OPTION/MODEL	QTY.	DESCRIPTION	PART NO.	ITEM NO.
KE8-E				
PARTS LIST				
UNLESS OTHERWISE SPECIFIED DIMENSION IN INCHES TOLERANCES	DRN: <i>John Capron</i>	DATE: <i>2/26/71</i>	digital EQUIPMENT CORPORATION WATFORD MASSACHUSETTS	
DECIMALS	ANGLES	CHK'D: <i>W. Max</i>	DATE: <i>2/21/71</i>	TITLE: ROM ENCODING
xxx - 005	±0°30'	ENG: <i>John Capron</i>	DATE: <i>2/21/71</i>	
x - .1		PROJ. ENG: <i>John Capron</i>	DATE: <i>2/21/71</i>	
REMOVE BURRS AND BREAK SHARP CORNERS SURFACE QUALITY	PROD: <i>John Capron</i>	DATE: <i>2/21/71</i>		
MATERIAL	NEXT HIGHER ASSY.	SIZE CODE	NUMBER	REV
		A-ML-KE8-E	D F D K E 8 - E - 02	A
FINISH	SCALE NONE	SHEET	DIST	
		1 OF 1		

DIGITAL EQUIPMENT CORPORATION
MAYNARD, MASSACHUSETTS

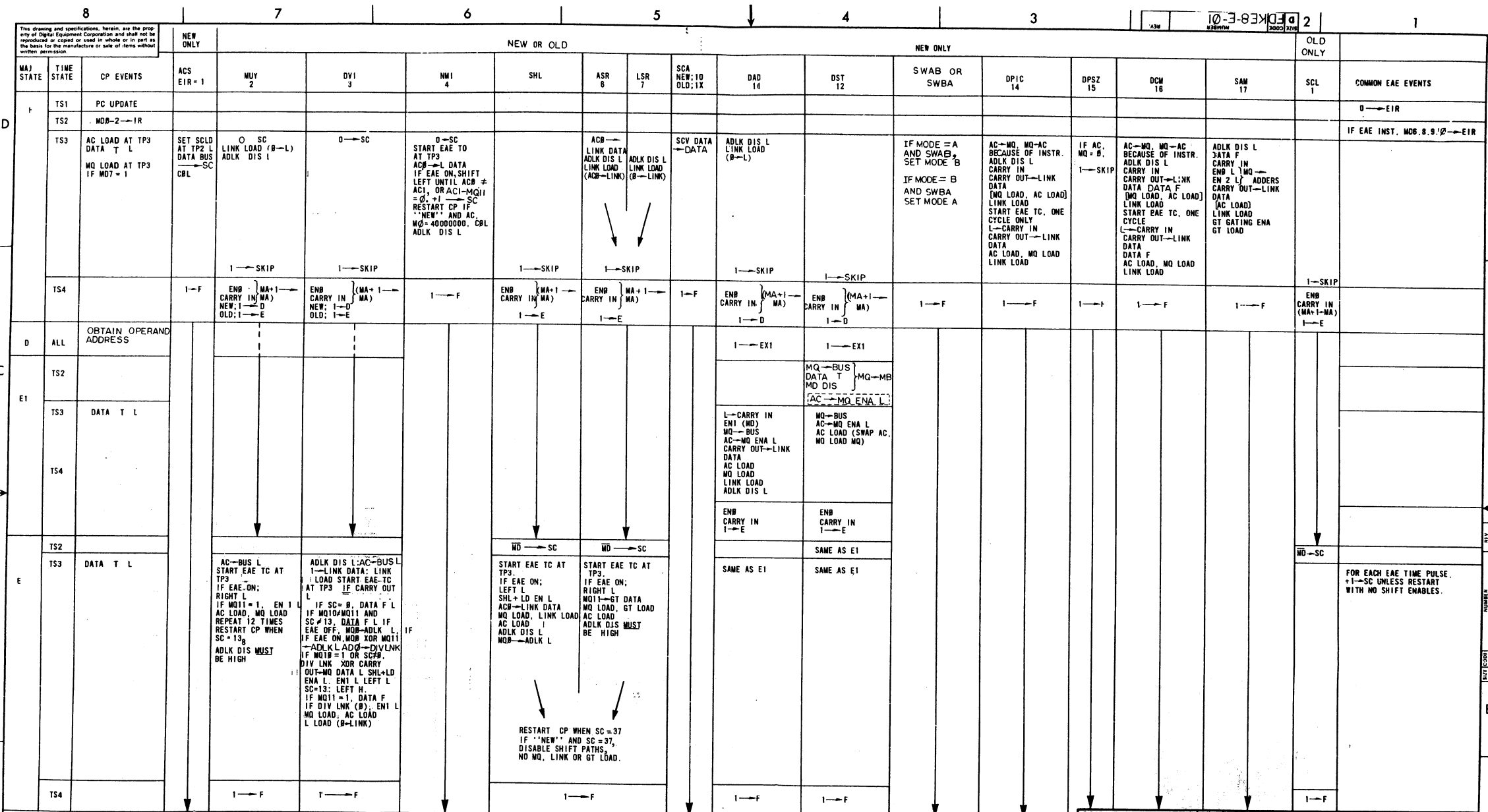
ACCESSORY LIST

LEGEND
D DOCUMENT
DN DOCUMENT CHANGE NOTICE
PA PAPER TAPE ASCII
PB PAPER TAPE BINARY
PM PAPER TAPE READ-IN-MODE

QUANTITY/VARIATION

MADE BY J. McCluskey
DATE 4/19/72
CHECKED *J. McCluskey*
DATE 2/9/72
SECTION
ENG L. Klotz
DATE 4/19/72
PROD *J. McCluskey*
DATE 4/19/72
ISSUED SECT.

ITEM NO.	DWG NO. / PART NO.	DESCRIPTION	QUANTITY/VARIATION										KIT CHECK	BY	DATE	INSTALLATION CHECK	BY	DATE		
			KE8-E																	
1	M8340	EAE Decoder and Stepcounter module	1																	
2	M8341	EAE Multiplexer and Timing Generator Module	1																	
3	H851	Edge Connectors	3																	
4	LIBKIT-8E-KE8-E	Program Library Kit For KE8-E	1																	
5	KE8-E	KE8-E Maintenance Manual	1																	
Note: Item 5 is temporarily waived ship the following.																				
	A-SP-KE8-E-3	KE8-E Engineering Specifications	1																	
	A-SP-KE8-E-4	KE8-E Acceptance Procedure	1																	
TITLE: Accessory List. <i>F</i>			ASSY. NO	SIZE CODE A AL		NUMBER KE8-E- 6				REV.	ECO NO									
SHEET OF			DIST.																	



REV	CHG	NO	DATE	BY

FIRST USED ON OPTION/MODEL		QTY.	DESCRIPTION	PART NO.	ITEM NO.
KE8-E					
UNLESS OTHERWISE SPECIFIED DIMENSION IN INCHES TOLERANCES					
DECIMALS	ANGLES	DRN. <i>Tom Capen</i> DATE <i>22 Jun 77</i> CHK'D. <i>W. M. G. G.</i> DATE <i>8/17/77</i> ENG. <i>W. M. G. G.</i> DATE <i>8/17/77</i> PROLENG. <i>S. A. G.</i> DATE <i>8/17/77</i> REMOVE BURRS AND BREAK SHARP CORNERS SURFACE QUALITY <input checked="" type="checkbox"/>			
MATERIAL		NEXT HIGHER ASSY.			
FINISH		A-ML-KE8-E	SIZE CODE	NUMBER	REV.
		SCALE NONE	DIFD	KE8-E-01	
		SHEET 1 OF 1	DIST.		

DIGITAL EQUIPMENT CORPORATION
MAYNARD, MASSACHUSETTS

ENGINEERING SPECIFICATION

CONTINUATION SHEET

ENGINEERING SPECIFICATION

DATE 2/15/72

TITLE KE8E ACCEPTANCE PROCEDURE

REVISIONS

REV	DESCRIPTION	CHG NO	ORIG	DATE	APPD BY	DATE

TITLE KE8E ACCEPTANCE PROCEDURE

- 1.Ø Equipment Required
 - A. PDP-8E or PDP-8M
 - B. M8340
 - C. M8341
 - D. 3-H851's
 - E. Teletype
 - F. Maindec-8E-DØLB-D-PB KE8E Instruction Test 1
 - G. Maindec-8E-DØMB-D-PB KE8E Instruction Test 2
 - H. Maindec-8E-DØRA-D-PB KE8E Extended Memory Exerciser

- 2.Ø Check that the M8340 and M8341 have:
 - A. Proper circuit revision.
 - B. Day code.

- 3.Ø Load and run the following diagnostics, consulting the Diagnostic Document for proper operating procedure.
 - A. Maindec-8E-DØLB for two complete program passes which will be indicated by "KE81" being typed out twice.
 - B. Maindec-8E-DØMB for two complete program passes which will be indicated by "KE8E" being typed out twice.
 - C. Maindec-8E-DØRA for five complete program passes which will be indicated by "KE8EME" being typed out five times. At the beginning of the program, be sure to type the correct value defining the maximum amount of memory.

- 4.Ø Shipping Hardware
 - A. M8340
 - B. M8341
 - C. 3-H8351's

- 5.Ø Shipping Software
 - A. Libkit-8E-KE8E
 - B. KE8E Print Set
 - C. KE8E Maintenance Manual

This drawing and specifications, herein, are the property of Digital Equipment Corporation and shall not be reproduced or copied or used in whole or in part as the basis for the manufacture or sale of items without written permission.

ENG <i>Louis H. G.</i>	APPD <i>John M. Conway</i>	SIZE A	CODE SP	NUMBER KE8-E-0-4	REV
------------------------	----------------------------	------------------	------------	---------------------	-----

SIZE A	CODE SP	NUMBER KE8-E-0-4	REV
------------------	------------	---------------------	-----

