

IC	TYPE	U1	U2	U3	U4	U5	U6	U7	U8
A1	Z80	1							
A2	74157	1							
A3	74157	1							
A4	74150	1							
A5	74150	1							
A6	74150	1							
A7	74150	1							
A8	74150	1							
A9	74150	1							
A10	74150	1							
A11	74150	1							
A12	74150	1							
A13	74150	1							
A14	74150	1							
A15	74150	1							
A16	74150	1							
A17	74150	1							
A18	74150	1							
A19	74150	1							
A20	74150	1							
A21	74150	1							
A22	74150	1							
A23	74150	1							
A24	74150	1							
A25	74150	1							
A26	74150	1							
A27	74150	1							
A28	74150	1							
A29	74150	1							
A30	74150	1							
A31	74150	1							
A32	74150	1							
A33	74150	1							
A34	74150	1							
A35	74150	1							
A36	74150	1							
A37	74150	1							
A38	74150	1							
A39	74150	1							
A40	74150	1							
A41	74150	1							
A42	74150	1							
A43	74150	1							
A44	74150	1							
A45	74150	1							
A46	74150	1							
A47	74150	1							
A48	74150	1							
A49	74150	1							
A50	74150	1							
A51	74150	1							
A52	74150	1							
A53	74150	1							
A54	74150	1							
A55	74150	1							
A56	74150	1							
A57	74150	1							
A58	74150	1							
A59	74150	1							
A60	74150	1							
A61	74150	1							
A62	74150	1							
A63	74150	1							
A64	74150	1							
A65	74150	1							
A66	74150	1							
A67	74150	1							
A68	74150	1							
A69	74150	1							
A70	74150	1							
A71	74150	1							
A72	74150	1							
A73	74150	1							
A74	74150	1							
A75	74150	1							
A76	74150	1							
A77	74150	1							
A78	74150	1							
A79	74150	1							
A80	74150	1							
A81	74150	1							
A82	74150	1							
A83	74150	1							
A84	74150	1							
A85	74150	1							
A86	74150	1							
A87	74150	1							
A88	74150	1							
A89	74150	1							
A90	74150	1							
A91	74150	1							
A92	74150	1							
A93	74150	1							
A94	74150	1							
A95	74150	1							
A96	74150	1							
A97	74150	1							
A98	74150	1							
A99	74150	1							
A100	74150	1							

**E-BO SCHEMATIC**

DATE: 8/31/87  
 CHECKED BY: J. J. J.  
 SCALE: 1:1  
 DRAWN BY: J. J. J.  
 DATE: 8/16/87

200215

DATE: 8/16/87

REVISIONS:

NO.	DESCRIPTION	DATE	BY
1	INITIAL	8/16/87	J. J. J.
2	REVISION	8/16/87	J. J. J.

INTERLOCKED WITH THE SCHEMATIC FOR THE BOARD ASSEMBLY. THIS SCHEMATIC IS THE PROPERTY OF THE BOARD ASSEMBLY. IT IS TO BE KEPT IN THE BOARD ASSEMBLY AND NOT TO BE REPRODUCED OR COPIED WITHOUT THE WRITTEN PERMISSION OF THE BOARD ASSEMBLY.

DATE: 8/16/87

200215

DATE: 8/16/87

REVISIONS:

NO.	DESCRIPTION	DATE	BY
1	INITIAL	8/16/87	J. J. J.
2	REVISION	8/16/87	J. J. J.

DATE: 8/16/87

200215

DATE: 8/16/87

REVISIONS:

NO.	DESCRIPTION	DATE	BY
1	INITIAL	8/16/87	J. J. J.
2	REVISION	8/16/87	J. J. J.

DATE: 8/16/87

200215

DATE: 8/16/87

REVISIONS:

NO.	DESCRIPTION	DATE	BY
1	INITIAL	8/16/87	J. J. J.
2	REVISION	8/16/87	J. J. J.

DATE: 8/16/87

200215

DATE: 8/16/87

REVISIONS:

NO.	DESCRIPTION	DATE	BY
1	INITIAL	8/16/87	J. J. J.
2	REVISION	8/16/87	J. J. J.

DATE: 8/16/87

200215

DATE: 8/16/87

REVISIONS:

NO.	DESCRIPTION	DATE	BY
1	INITIAL	8/16/87	J. J. J.
2	REVISION	8/16/87	J. J. J.

DATE: 8/16/87

200215

DATE: 8/16/87

REVISIONS:

NO.	DESCRIPTION	DATE	BY
1	INITIAL	8/16/87	J. J. J.
2	REVISION	8/16/87	J. J. J.

DATE: 8/16/87

200215

DATE: 8/16/87

REVISIONS:

NO.	DESCRIPTION	DATE	BY
1	INITIAL	8/16/87	J. J. J.
2	REVISION	8/16/87	J. J. J.

DATE: 8/16/87

200215

DATE: 8/16/87

REVISIONS:

NO.	DESCRIPTION	DATE	BY
1	INITIAL	8/16/87	J. J. J.
2	REVISION	8/16/87	J. J. J.

DATE: 8/16/87

200215

DATE: 8/16/87

REVISIONS:

NO.	DESCRIPTION	DATE	BY
1	INITIAL	8/16/87	J. J. J.
2	REVISION	8/16/87	J. J. J.

DATE: 8/16/87

200215

DATE: 8/16/87

REVISIONS:

NO.	DESCRIPTION	DATE	BY
1	INITIAL	8/16/87	J. J. J.
2	REVISION	8/16/87	J. J. J.

DATE: 8/16/87

200215

DATE: 8/16/87

REVISIONS:

NO.	DESCRIPTION	DATE	BY
1	INITIAL	8/16/87	J. J. J.
2	REVISION	8/16/87	J. J. J.

DATE: 8/16/87

200215

DATE: 8/16/87

REVISIONS:

NO.	DESCRIPTION	DATE	BY
1	INITIAL	8/16/87	J. J. J.
2	REVISION	8/16/87	J. J. J.

DATE: 8/16/87

200215

DATE: 8/16/87

REVISIONS:

NO.	DESCRIPTION	DATE	BY
1	INITIAL	8/16/87	J. J. J.
2	REVISION	8/16/87	J. J. J.

DATE: 8/16/87

200215

DATE: 8/16/87

REVISIONS:

NO.	DESCRIPTION	DATE	BY
1	INITIAL	8/16/87	J. J. J.
2	REVISION	8/16/87	J. J. J.

DATE: 8/16/87

200215

DATE: 8/16/87

REVISIONS:

NO.	DESCRIPTION	DATE	BY
1	INITIAL	8/16/87	J. J. J.
2	REVISION	8/16/87	J. J. J.

DATE: 8/16/87

200215

DATE: 8/16/87

REVISIONS:

NO.	DESCRIPTION	DATE	BY
1	INITIAL	8/16/87	J. J. J.
2	REVISION	8/16/87	J. J. J.

DATE: 8/16/87

200215

DATE: 8/16/87

REVISIONS:

NO.	DESCRIPTION	DATE	BY
1	INITIAL	8/16/87	J. J. J.
2	REVISION	8/16/87	J. J. J.

DATE: 8/16/87

200215

DATE: 8/16/87

REVISIONS:

NO.	DESCRIPTION	DATE	BY
1	INITIAL	8/16/87	J. J. J.
2	REVISION	8/16/87	J. J. J.

DATE: 8/16/87

200215

DATE: 8/16/87

REVISIONS:

NO.	DESCRIPTION	DATE	BY
1	INITIAL	8/16/87	J. J. J.
2	REVISION	8/16/87	J. J. J.

DATE: 8/16/87

200215

DATE: 8/16/87

REVISIONS:

NO.	DESCRIPTION	DATE	BY
1	INITIAL	8/16/87	J. J. J.
2	REVISION	8/16/87	J. J. J.

DATE: 8/16/87

200215

DATE: 8/16/87

REVISIONS:

NO.	DESCRIPTION	DATE	BY
1	INITIAL	8/16/87	J. J. J.
2	REVISION	8/16/87	J. J. J.

DATE: 8/16/87

200215

DATE: 8/16/87

REVISIONS:

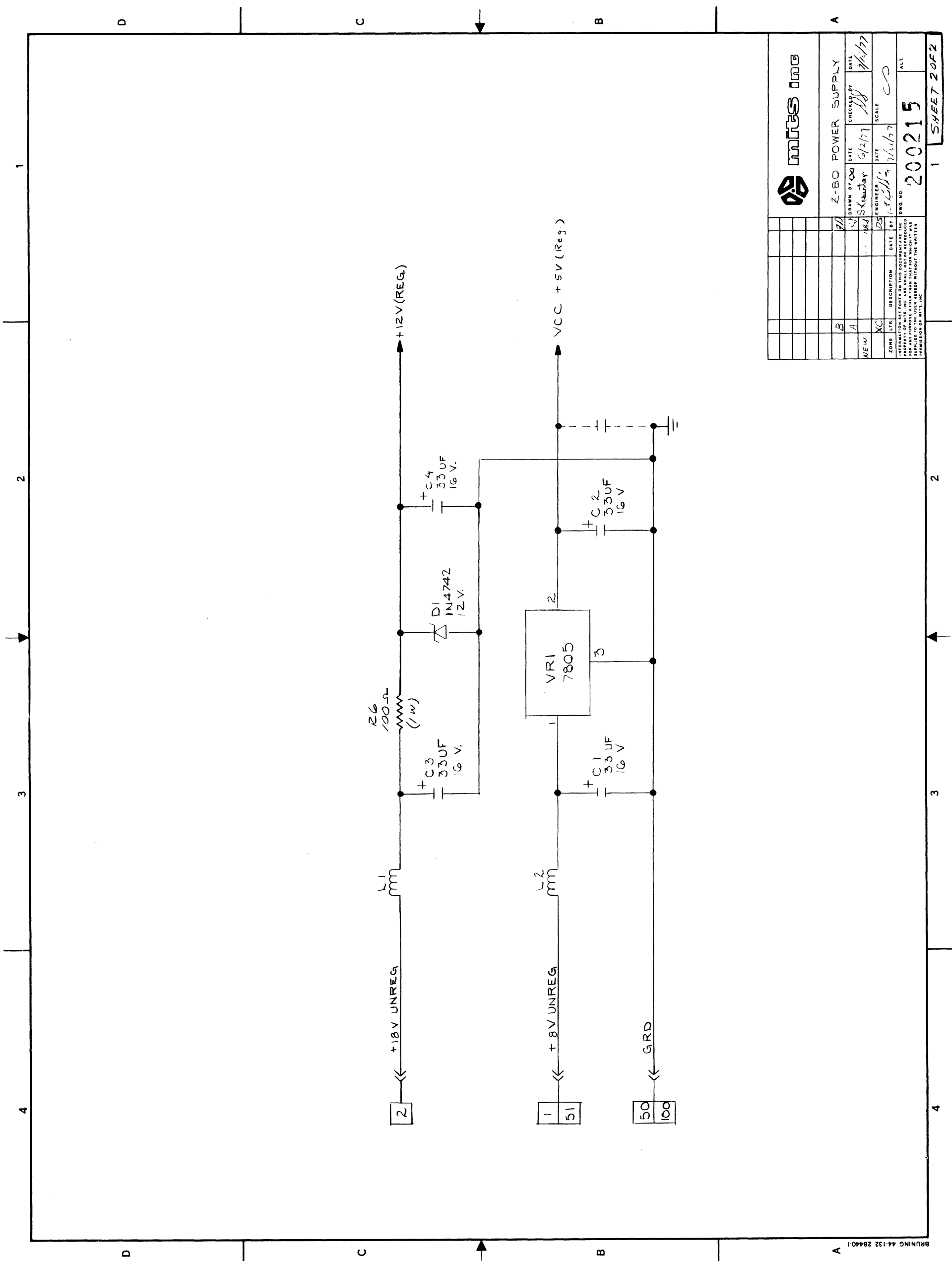
NO.	DESCRIPTION	DATE	BY
1	INITIAL	8/16/87	J. J. J.
2	REVISION	8/16/87	J. J. J.

DATE: 8/16/87

200215

DATE: 8/16/87

REVISIONS



DATE		DATE		DATE	
9/2/77	9/2/77	11/1/77	11/1/77	200215	1
SKAULTAY	SKAULTAY	PS	PS	200215	1
SCALE	SCALE	SCALE	SCALE	SHEET 2 OF 2	
ENGINEER	ENGINEER	ENGINEER	ENGINEER		
DATE	DATE	DATE	DATE		
DESCRIPTION	DESCRIPTION	DESCRIPTION	DESCRIPTION		
Z-80 POWER SUPPLY					
DRAWN BY SKAULTAY					
CHECKED BY SKAULTAY					
DATE 9/2/77					
DATE 11/1/77					
DATE 200215					
DATE 1					

INFORMATION SET FORTH ON THIS DOCUMENT ARE THE PROPERTY OF MITSUBISHI ELECTRIC CORP. AND ARE NOT TO BE REPRODUCED OR TRANSMITTED IN ANY FORM OR BY ANY MEANS, ELECTRONIC OR MECHANICAL, INCLUDING PHOTOCOPYING, RECORDING, OR BY ANY INFORMATION STORAGE AND RETRIEVAL SYSTEM, WITHOUT THE WRITTEN PERMISSION OF MITSUBISHI ELECTRIC CORP.

BRUNING 44-132 28440-1