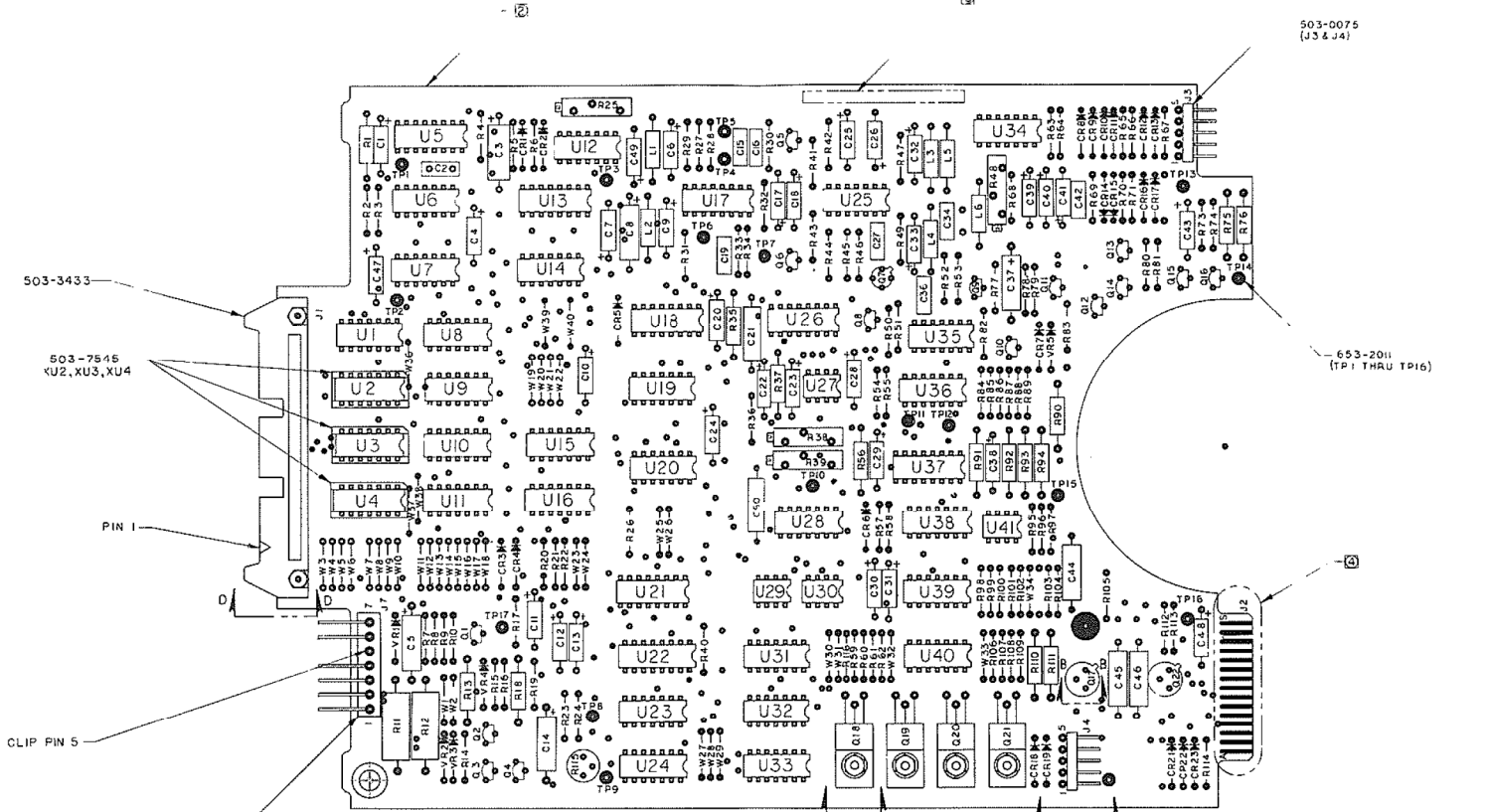


| REVISIONS | | | | |
|-----------|----------------------------|---------|----|----------|
| REV | DESCRIPTION | DATE | DR | CHK APPR |
| A | REVISED FOR PAPER REVISION | 1/10/71 | ST | ST |
| B | REVISED FOR PAPER REVISION | 1/22/71 | ST | ST |
| C | REVISED FOR PAPER REVISION | 1/23/71 | ST | ST |



503-3433

503-7546
XU2, XU3, XU4

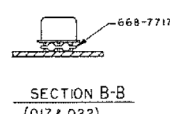
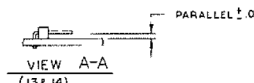
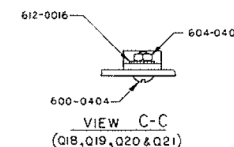
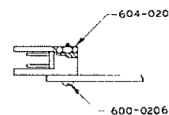
PIN 1

CLIP PIN 5

503-0107

503-0075
(J3 & J4)

653-2011
(TP1 THRU TP16)



SCHEMATIC 600265
SPECIFICATION 600269
REF DWGS:

PART NO 600266- REV B

- ① MASK AREAS SHOWN DURING FLOW SOLDER OPERATION.
 - ② MARK PART NUMBER 600266, VERSION NUMBER AND VERSION ISSUE LETTER IN AREA SHOWN.
 - ③ THIS ASSEMBLY SHALL BE MADE FROM PROCESS BOARD 600267-01 REV C AND SUBSEQUENT.
1. ASSEMBLE PER STANDARD MANUFACTURING METHODS.
NOTES: UNLESS OTHERWISE SPECIFIED

| SIGNATURES | | DATE |
|-------------|-----------------|-----------------------|
| DESIGNED BY | MANUFACTURED BY | 1/10/71 |
| CHECKED BY | TESTED BY | 1/22/71 |
| DATE | DATE | 1/23/71 |
| TITLE | | PCBA FD BASIC II A |
| MATERIAL | SEE/LM | |
| SCALE | 1:1 | |
| SHEET | 1 OF 1 | |

600266

A