

**ADDING A DRIVE
TO YOUR 8813**

PolyMorphic
Systems

460 Ward Drive Santa Barbara California 93111 (805) 967-2351

This manual is PolyMorphic Systems part number 810101

Copyright 1977, Interactive Products Corporation.

The Add-On Mini-Floppy Diskette Drive Kit allows you to add an additional disk drive to your one or two-drive System 8813. It includes an add-on drive, cables, and all necessary hardware.

Check the enclosed parts against the parts list below to make sure everything has been included. If any parts are missing, see your dealer. Always refer to PolyMorphic Systems parts by their PolyMorphic Systems part number.

PARTS LIST

Check	Qty	Part Number	Description
<input type="checkbox"/>	1	009015	Drive for 5" Mini-Floppy Diskette
<input type="checkbox"/>	3	206228	6-32 x 3/8 Machine Screw
<input type="checkbox"/>	3	333037	#6 Internal Tooth Lock Washer
<input type="checkbox"/>	1	810101	Add-On Drive Kit Manual

In addition to the parts above, the kit includes a power cable for the drive and a new drive interconnection cable (ribbon cable assembly). Just which parts are included depends on whether the drive to be added is a second or third drive.

SECOND DRIVE

<input type="checkbox"/>	1	105008	Power Cable Assembly, 15", 2 4-Pin Connectors
<input type="checkbox"/>	1	105166	Ribbon Cable Assembly, 3 Edge Connectors

THIRD DRIVE

<input type="checkbox"/>	1	105009	Power Cable Assembly, 20", 2 4-Pin Connectors
<input type="checkbox"/>	1	105167	Ribbon Cable Assembly, 4 Edge Connectors

Before the additional drive can be mounted in the System 8813, it must be modified to be Drive 2 or Drive 3. Perform the following steps, checking them off in the space provided () as you go.

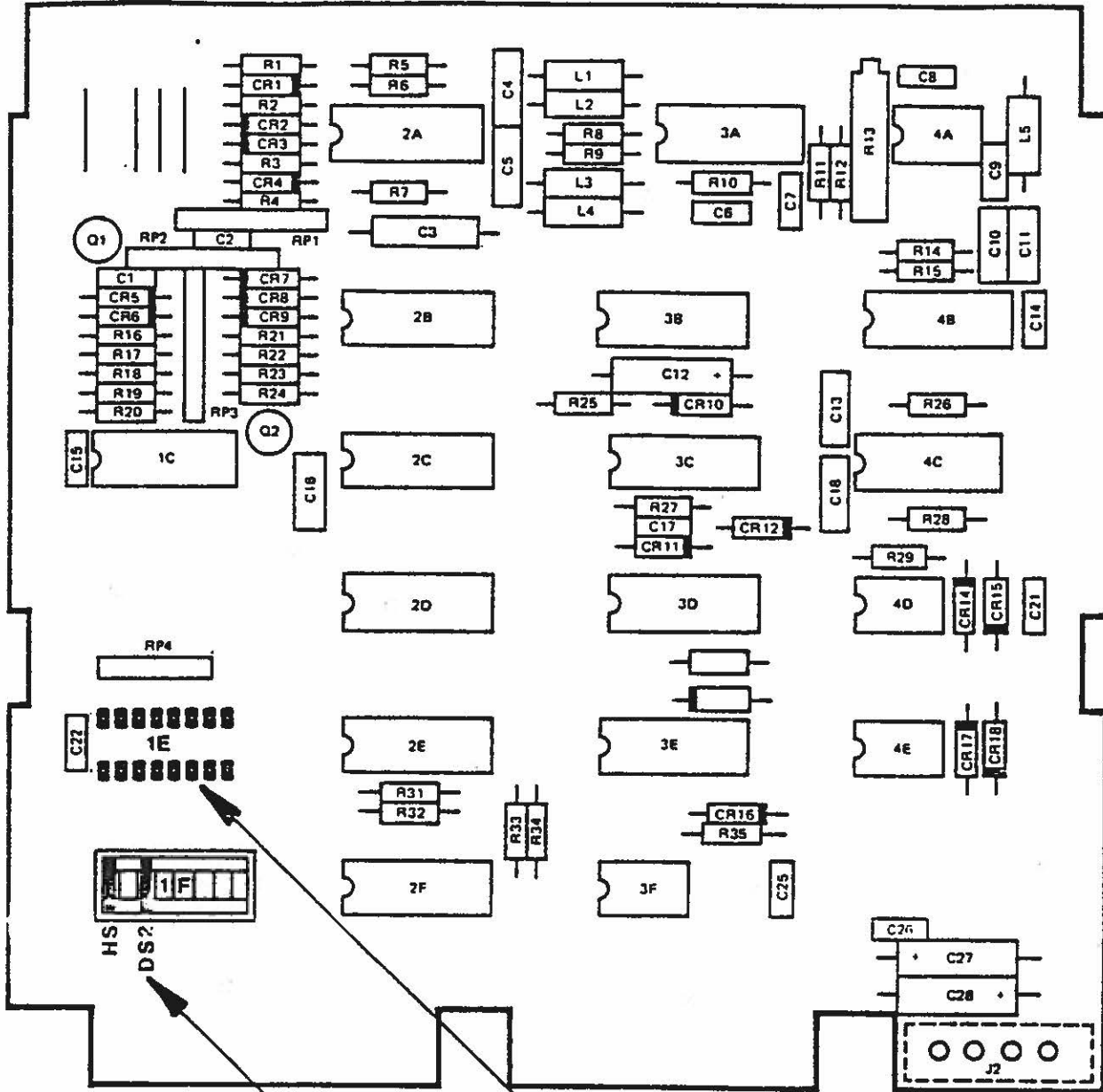
Remove the drive from its container, then remove the packing material from the drive.

Mounted on the drive is a printed circuit card. Refer to the following drawings and note that located in position 1F on the card is a programmable shunt. Each drawing shows two jumpers. Remove the jumpers by cutting away the pins on the shunt, leaving only those at the locations indicated on the drawings. (Alternatively, the undesired pins may be bent outward, so that they do not make contact with the sockets.)

Remove the resistor network (1E).

After the drive is modified, consult Appendix E, Section 2, of the System 88 User's Guide for instructions on how to install drives.

DRIVE 2



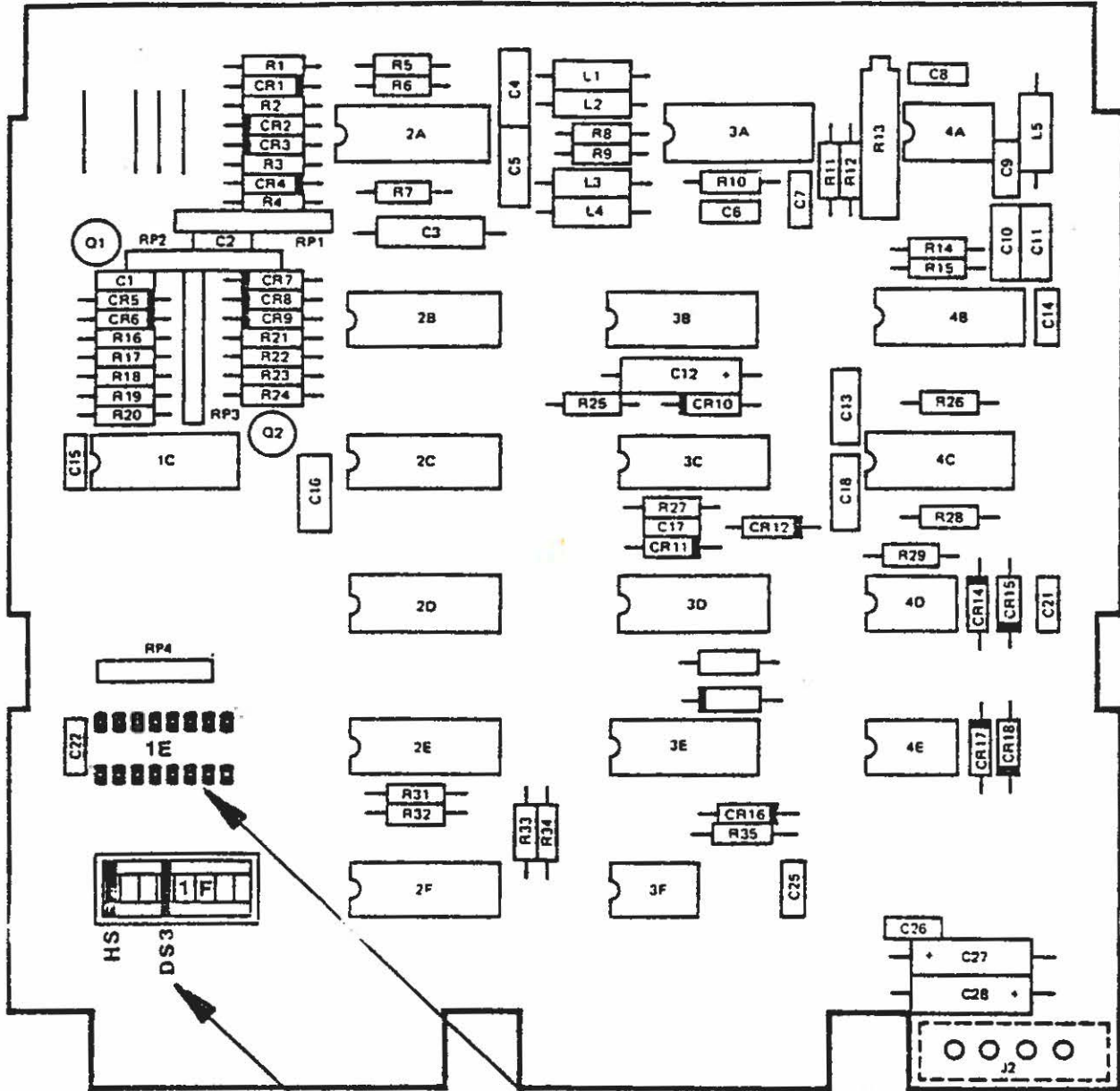
Remove resistor network.

Eliminate all EXCEPT these jumpers.

#3 SHUGART 400
SN B 37756

DRIVE 3

INSTALLED 12/79



Remove resistor network.

Eliminate all EXCEPT these jumpers.